



PLACENTIA CORPORATE CENTER

701 & 711 Kimberly Avenue
Placentia | CA

NEWMARK

FOR LEASE

701 & 711 Kimberly Avenue, Placentia | CA



PLACENTIA CORPORATE CENTER





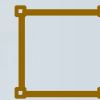
TWO OFFICE
Building Campus



IMMEDIATE ACCESS
to 57 and 91 freeways



BUILDING AND FREEWAY
signage available



SPEC SUITES AVAILABLE



FIBER OPTIC
internet service



OUTDOOR SEATING AREA

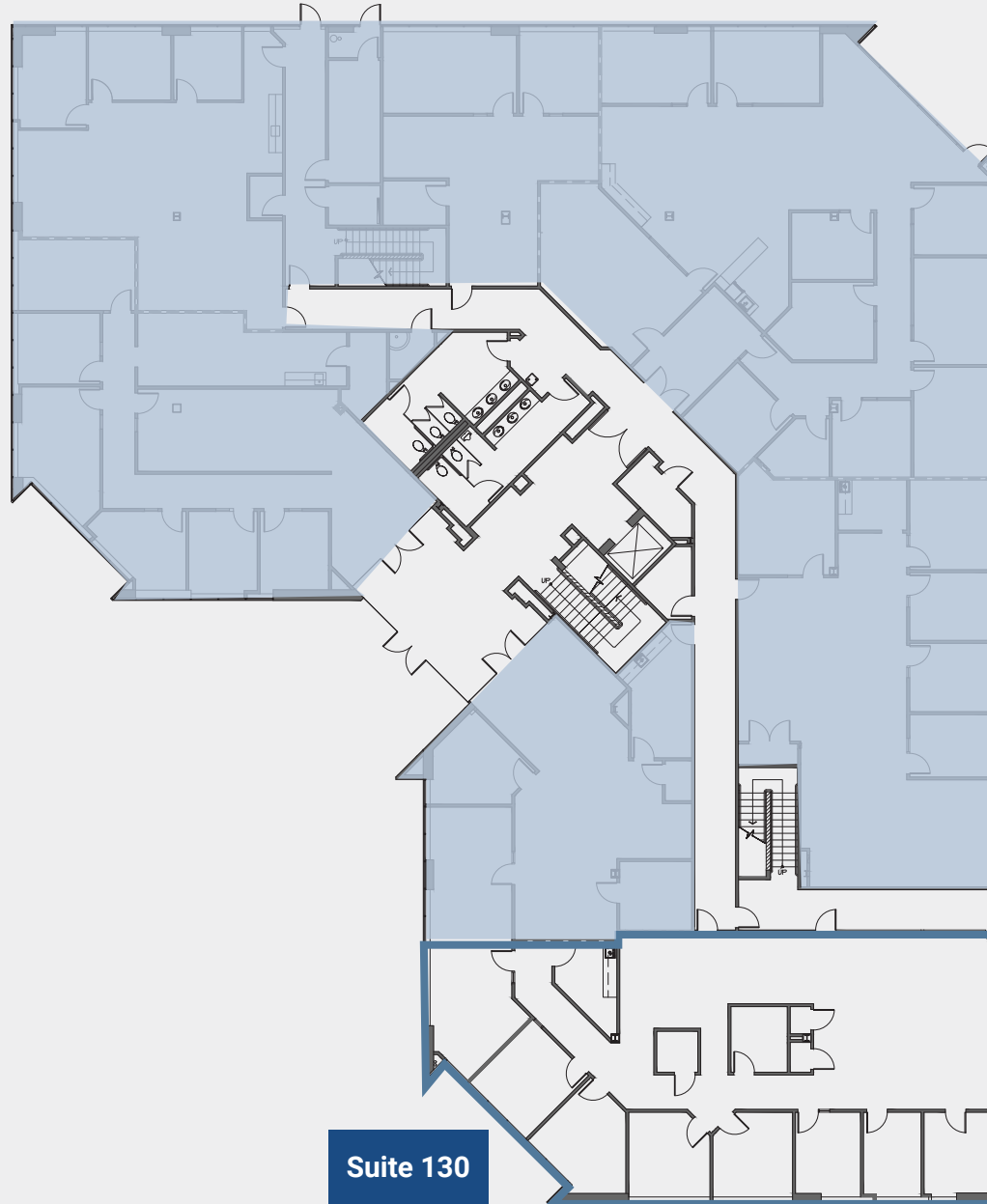


CAFE ON SITE

THE GATE

BUILDING 701

Suite 130 / ±3,540 SF



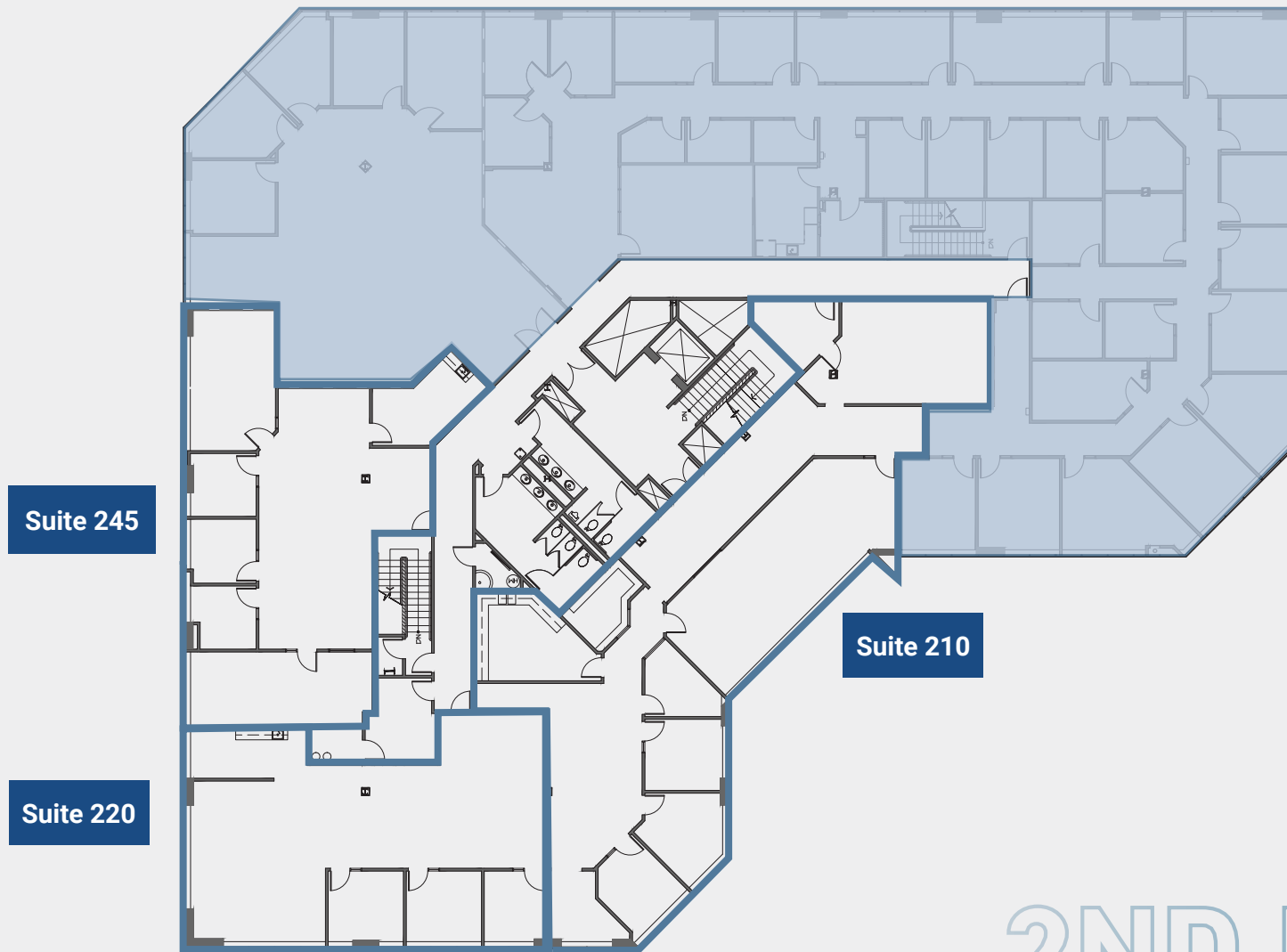
1ST FLOOR

Suite 130

BUILDING 701

Suite 210 / $\pm 3,852$ SF
Suite 220 / $\pm 2,151$ SF
Suite 245 / $\pm 2,309$ SF

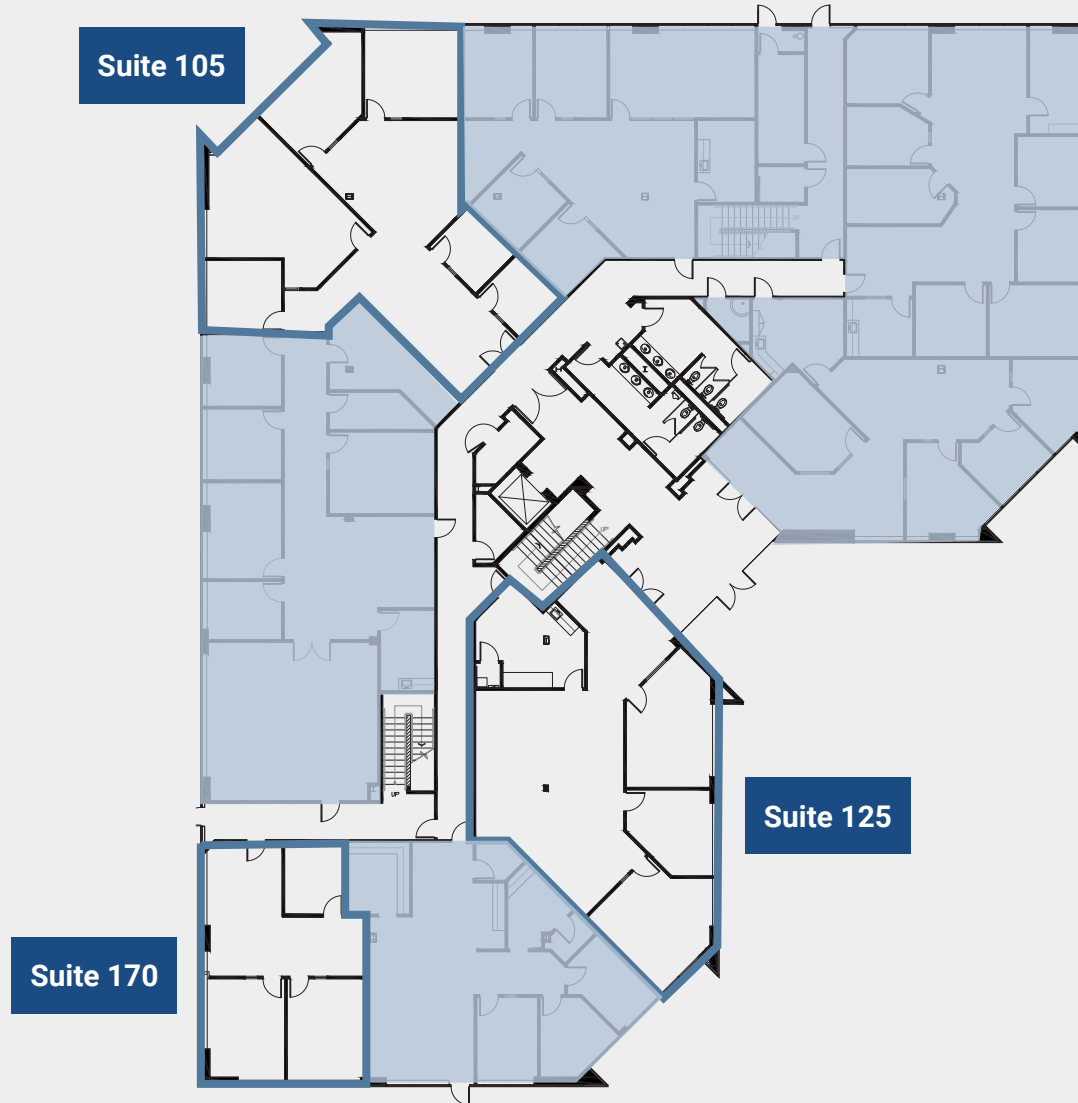
Contiguous
up to 8,312 SF



2ND FLOOR

BUILDING 711

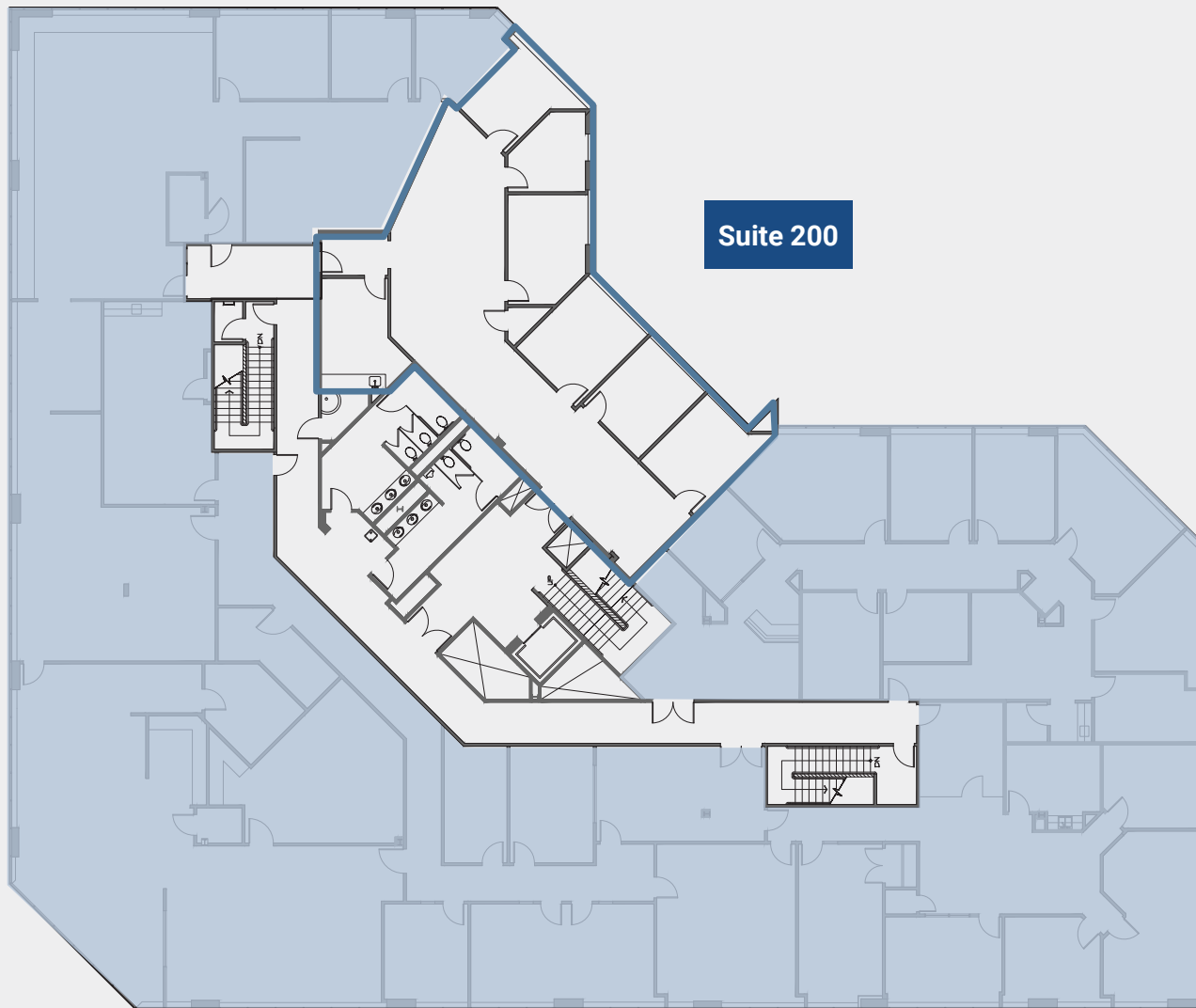
Suite 105 / $\pm 2,522$ SF
Suite 125 / $\pm 2,309$ SF
Suite 170 / $\pm 1,191$ SF



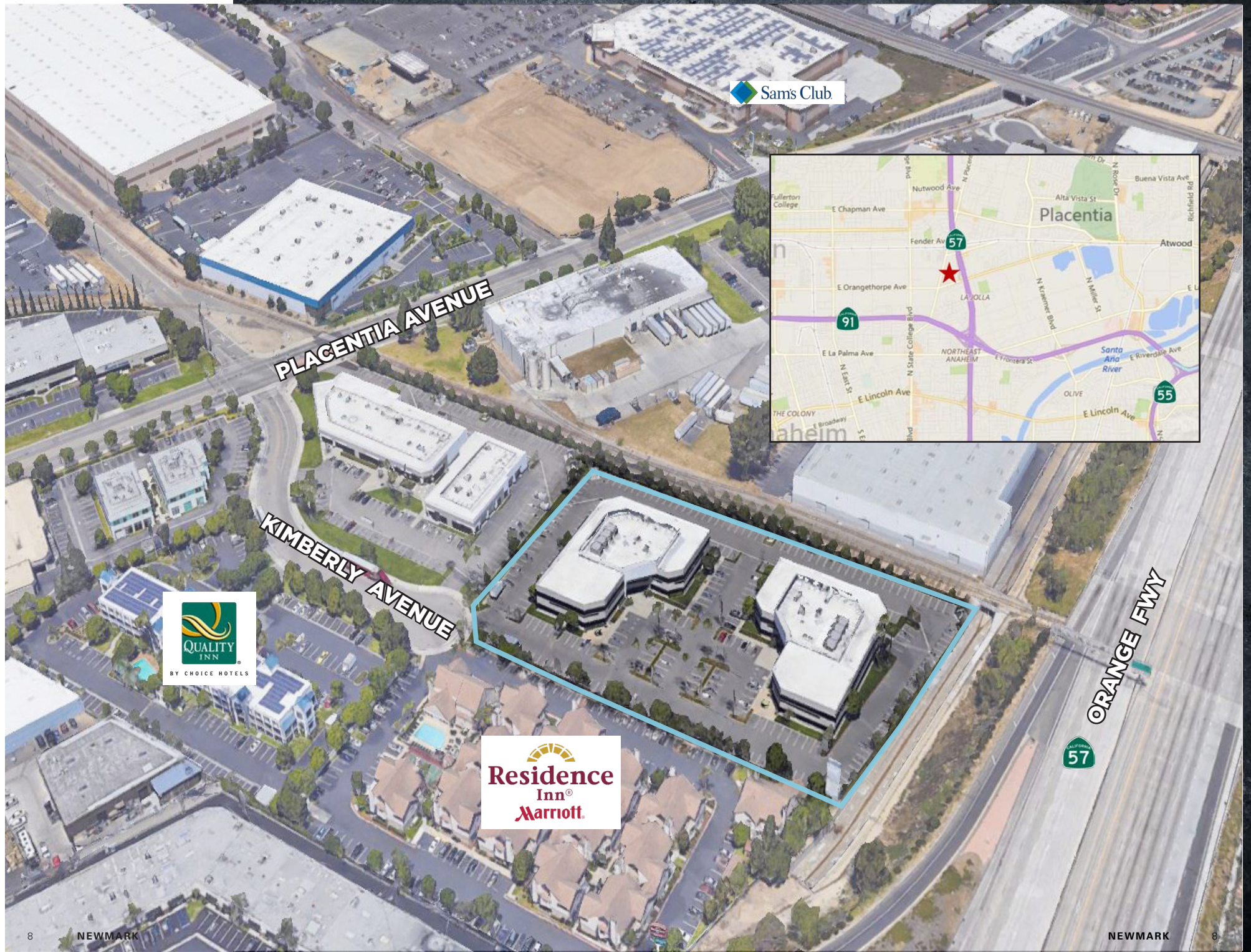
1ST FLOOR

BUILDING 711

Suite 200 / ±2,697 SF



2ND FLOOR



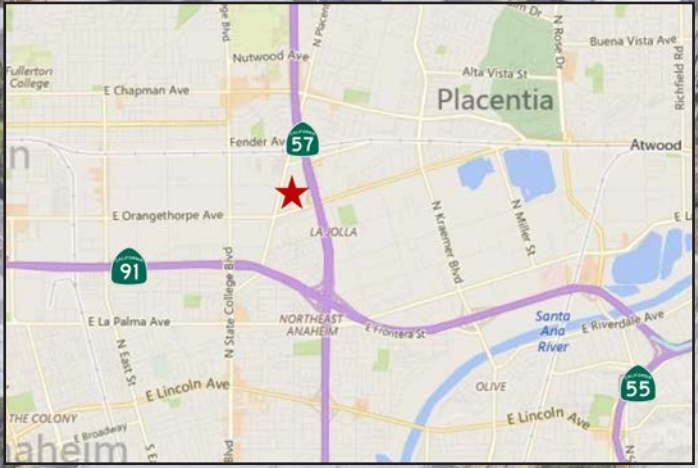
Sam's Club

PLACENTIA AVENUE

KIMBERLY AVENUE

QUALITY INN
BY CHOICE HOTELS

Residence Inn
by Marriott



ORANGE FWY

57



PLACENTIA CORPORATE CENTER

701 & 711 Kimberly Avenue, Placentia | CA



NEWMARK

TAYLOR ING
Senior Managing Director
t 714-271-9066
taylor.ing@nmrk.com
CA RE Lic. #00895164

RICHARD P. SUNG
Managing Director
t 949-608-2178
richard.sung@nmrk.com
CA RE Lic. #01953211

Corporate License #01355491
The distributor of this communication is performing acts for which a real estate license is required. The information contained herein has been obtained from sources deemed reliable but has not been verified and no guarantee, warranty or representation, either express or implied, is made with respect to such information. Terms of sale or lease and availability are subject to change or withdrawal without notice.