 JLL SEE A BRIGHTER WAY

For lease

Educational/institutional establishment
+/- 23,000 SF

5210 Durocher Avenue, Outremont

jll.com

Highlights



Educational / Institutional establishment

This exceptional corner property exudes classic architecture. With its versatile design, it offers endless possibilities for a range of uses. Whether you envision a prestigious school, a flourishing cultural community center, a sublime hotel, or even municipal facilities such as a library, health care center or a museum, this property is the ideal canvas to bring your vision to life.



Strategic location in a flourishing neighbourhood

This building offers a prime location just steps away from the highly regarded Laurier West Street and the Mount Royal. Surrounding the area are top-rated restaurants, upscale boutiques, and luxurious spas. Additionally, within a few minutes' reach is the Mile-End district, a neighborhood in effervesce, home to local shops, restaurants and many AI/IT companies.



High walk score and well serviced by public transportation

Located between Outremont (blue line) and Laurier (orange line) metro stations and minutes from du Parc Avenue bus stop where you can get downtown within 15 minutes.



Exclusive site located in the heart of Outremont neighborhood and steps away from the prestigious Laurier Street that offers some of the best shops and restaurants in the city.

Zoning In Place	
Zoning	PB-4
Permitted uses	Community: open public space, municipal, education, health care, offices, and food and beverage

Property description



This exclusive site with great natural light, features two-storey along with a semi-basement includes a fully equipped commercial kitchen, a gymnasium, locker rooms with showers, diverse sizes of classrooms, an HVAC system, and a fenced schoolyard that could easily be transformed into a parking area. Building signage is available subject to municipal approval.





Metro

Direct access to bus 51 from Laurier metro station



Bus

3-min walk
80, 365, 368, 480

4-min walk
51

- Restaurants
- Shops
- Spas

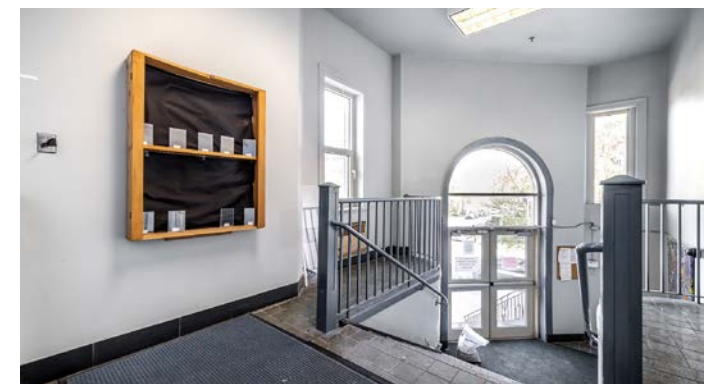
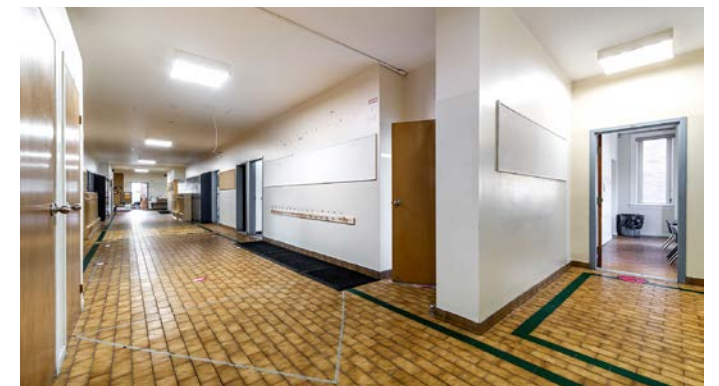


5210 Durocher Avenue

District	Outremont
Building size	±23,000 SF
Land area	±18,500 SF
Lot number	1 350 604
Year built	1969
Floors	3
Clear ceiling height	10'

Lease conditions

Asking rent	Upon demand
Availability	Immediately

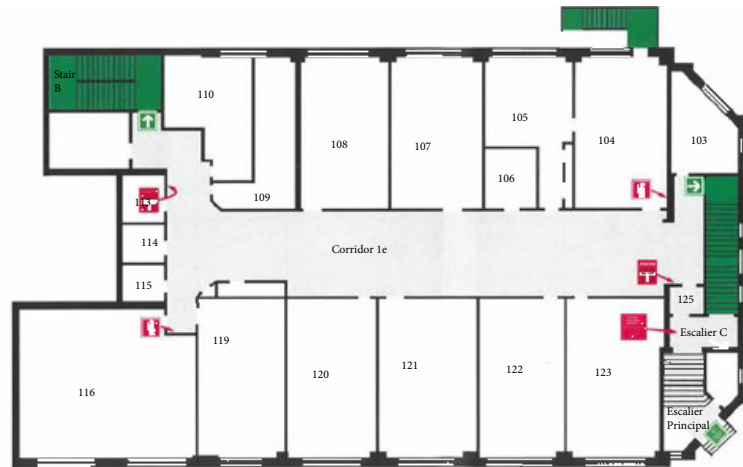


Floor plan

Second floor



First floor



Semi-basement



01

Gymnasium



01

Brand new commercial kitchen



02

locker-rooms with showers



03

Floors including semi-basement



06

Restrooms

Contact us

Marie Laurence

Vice President

Commercial Real Estate Broker

+1 514 927 7657

marie.laurence@jll.com

Michel (Michael) Belina*

Senior Vice President

Real Estate Broker

+1 514 886 3010

michael.belina@jll.com

*Real Estate Broker acting with the business corporation Services Immobiliers Michel Belina Inc.

Jones Lang Lasalle Real Estate Services, Inc. (Real Estate Agency)

This publication is the sole property of Jones Lang LaSalle and must not be copied, reproduced or transmitted in any form or by any means, either in whole or in part, without the prior written consent of Jones Lang LaSalle. The information contained in this publication has been obtained from sources generally regarded to be reliable. However, no representation is made, or warranty given, in respect of the accuracy of this information. We would like to be informed of any inaccuracies so that we may correct them. Jones Lang LaSalle does not accept any liability in negligence or otherwise for any loss or damage suffered by any party resulting from reliance on this publication. Any opinion or estimate of value of any asset in this presentation is based upon the high-level preliminary review by JLL. It is not the same as the opinion of value in an appraisal developed by a licensed appraiser under the Uniform Standards of Professional Appraisal Practice. JLL expressly disclaims any liability for any reliance on any opinion or estimate of value in this presentation by any party. Copyright © Jones Lang LaSalle IP, Inc. 2024