

# 72,000 SF WAREHOUSE/OFFICE FOR SUBLEASE

585 CAPITAL DRIVE | LAKE ZURICH, IL



## PROPERTY HIGHLIGHTS

• <b>BUILDING SIZE</b>	72,000 SF	• <b>CLEAR HEIGHT</b>	21'
• <b>WAREHOUSE</b>	63,400 SF	• <b>LOADING</b>	5 docks
• <b>OFFICE</b>	8,600 SF	• <b>DRIVE-IN-DOORS</b>	2 doors
• <b>MEZZANINE</b>	120' x 40' (4,800 SF)	• <b>COLUMNS</b>	40' x 40'
• <b>LOT SIZE</b>	4.28 acres	• <b>HVAC</b>	Throughout entire building
• <b>YEAR BUILT</b>	1999, addition in 2017	• <b>ELECTRIC</b>	1200 amps, 3PH
• <b>RATE</b>	STO	• <b>PARKING</b>	73 cars

## CONTACTS

### **SERGIO CHAPA, SIOR**

Senior Managing Director

773.957.1436

[sergio.chapa@nmrk.com](mailto:sergio.chapa@nmrk.com)

### **MICHAEL PROST**

Senior Managing Director

773.957.1430

[michael.prost@nmrk.com](mailto:michael.prost@nmrk.com)

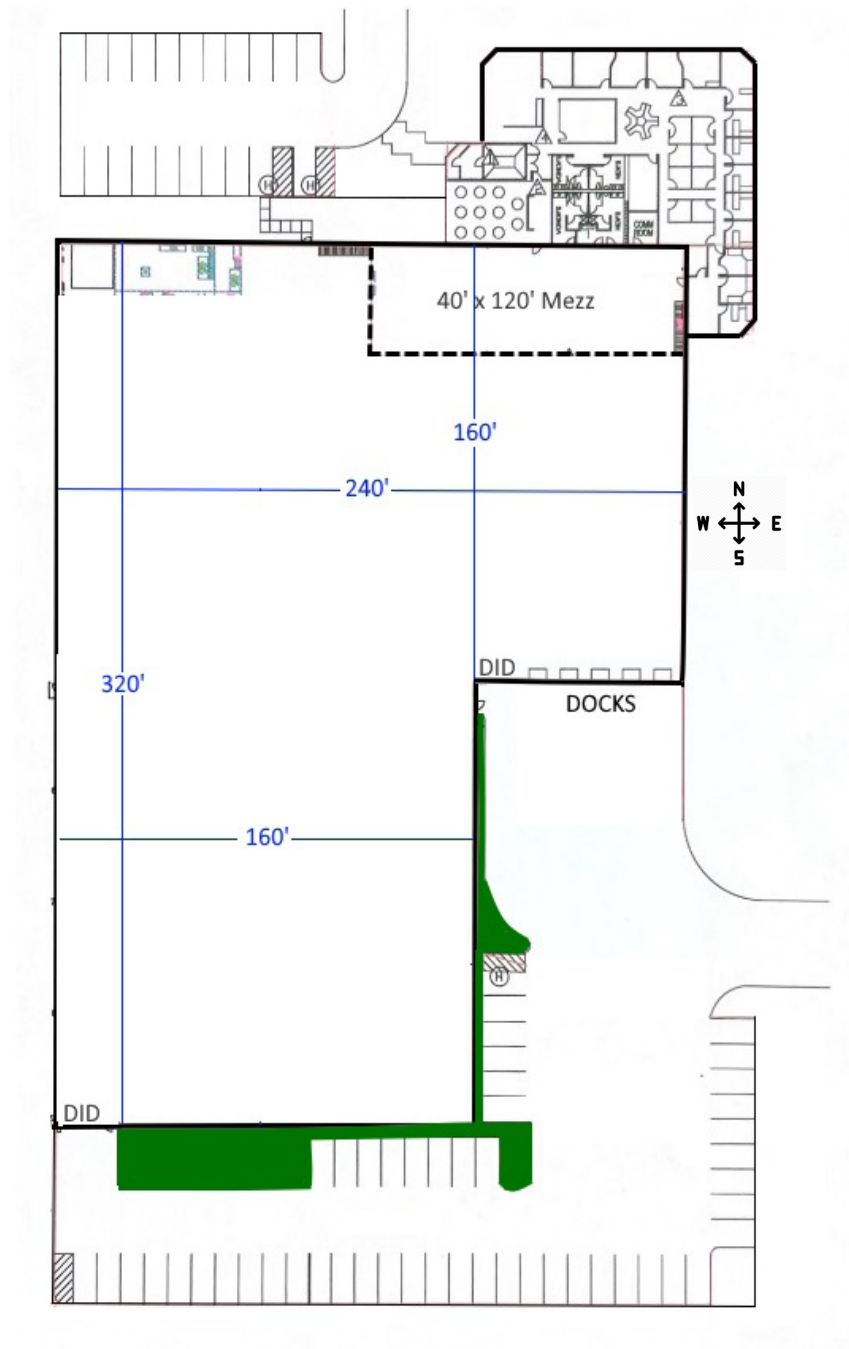
8750 W. Bryn Mawr Avenue, Suite 350  
Chicago, IL 60631



# 72,000 SF WAREHOUSE/OFFICE FOR SUBLEASE

585 CAPITAL DRIVE | LAKE ZURICH, IL

## SITE PLAN

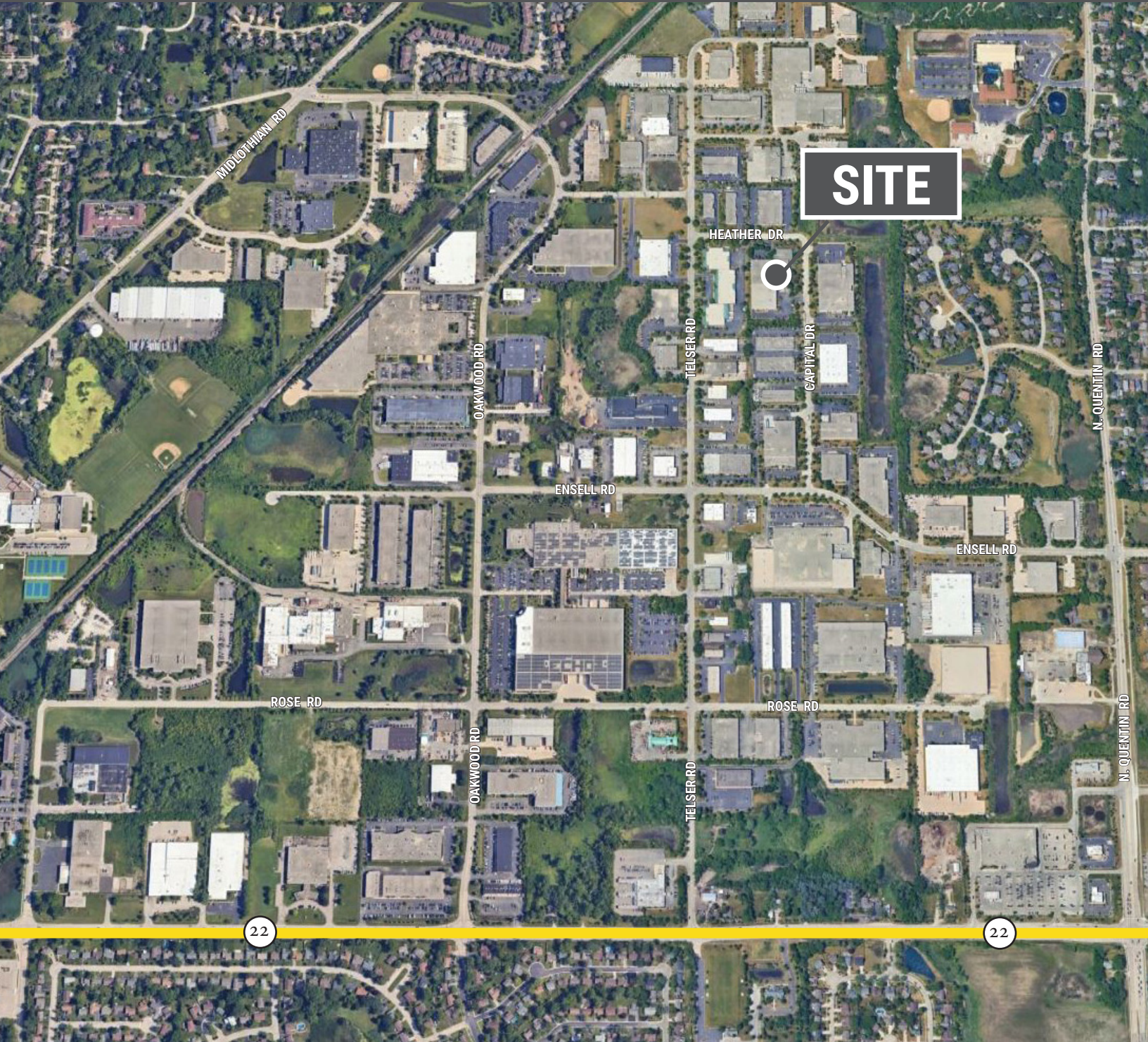




# 72,000 SF WAREHOUSE/OFFICE FOR SUBLEASE

585 CAPITAL DRIVE | LAKE ZURICH, IL

## SITE LOCATION



[nmrk.com](http://nmrk.com)

**NEWMARK**

The information contained herein has been obtained from sources deemed reliable but has not been verified and no guarantee, warranty or representation, either express or implied, is made with respect to such information. Terms of sale or lease and availability are subject to change or withdrawal without notice.