



INDIVIDUAL OFFICE FOR LEASE

LEASE OVERVIEW

AVAILABLE | SUITE 3

LEASE PRICE | \$525 PER MONTH

LEASE TYPE | MODIFIED GROSS

SQUARE FEET | 168 +/- SF

ZONING | OFFICE SERVICES

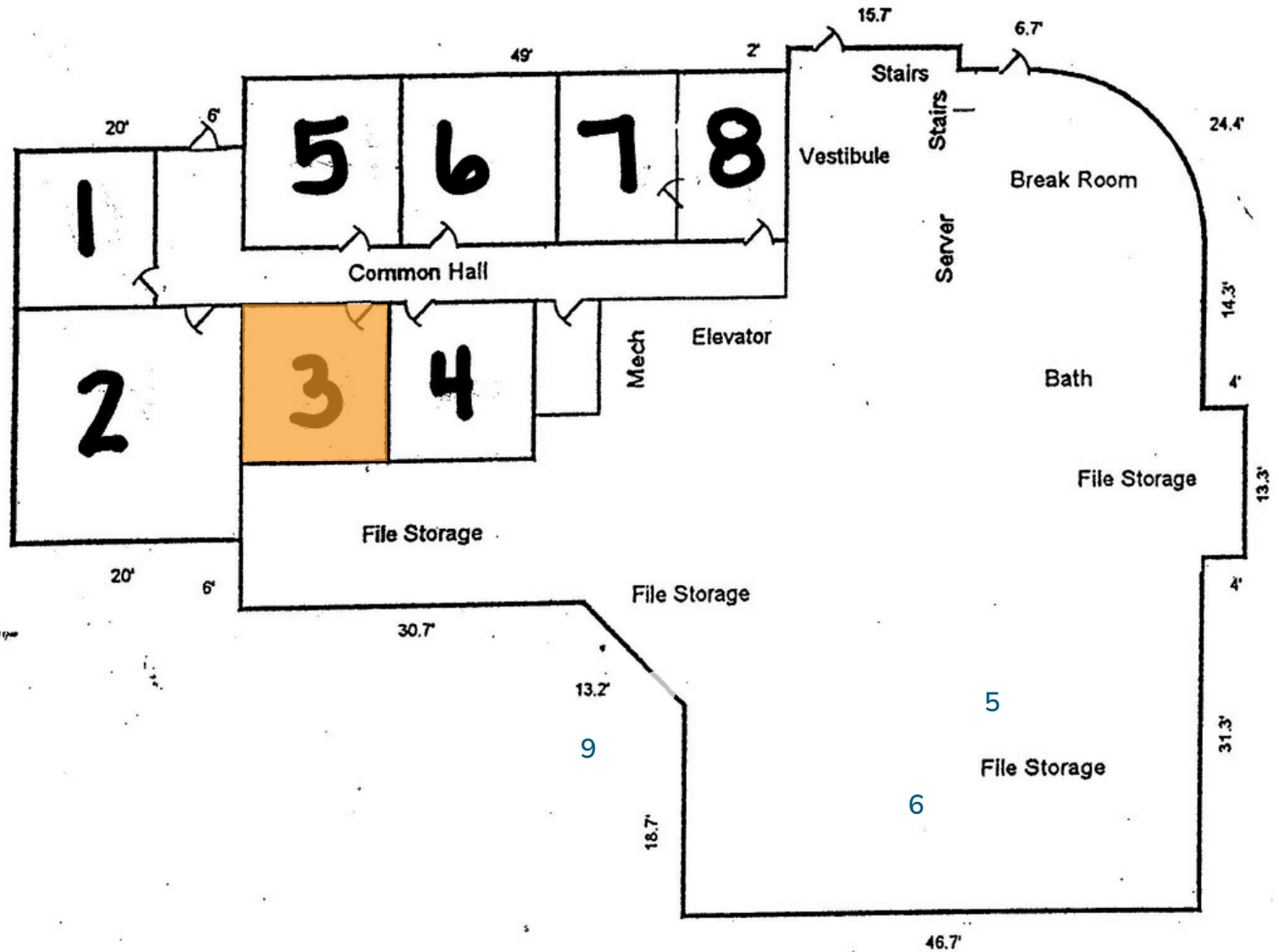
Available for lease: an individual office on the lower level of 120 Applecross Road, located in the sought-after Turnberry Wood Professional Office Park in Moore County. This prime location is surrounded by a variety of professional services, including legal, financial, wealth management, and medical providers. The lower level is accessed via a rear entrance and features individual offices and shared common areas, including restrooms and a fully equipped kitchen. Utilities are included, offering a convenient turn-key solution for your business.

HOLLY BELL
NC BROKER
C: 910.690.1065
HOLLY@CSGNC.COM

CAROLINA SUMMIT GROUP
390 SW Broad Street, Suite B
Southern Pines, NC 28387
910.684.5353
carolinasummitgroup.com

GEORGE MANLEY
NC BROKER
C: 910.603.8395
GEORGE@CSGNC.COM

LOWER LEVEL LAYOUT



HOLLY BELL
 NC BROKER
 C: 910.690.1065
 HOLLY@CSGNC.COM

CAROLINA SUMMIT GROUP
 390 SW Broad Street, Suite B
 Southern Pines, NC 28387
 910.684.5353
 carolinasummitgroup.com

GEORGE MANLEY
 NC BROKER
 C: 910.603.8395
 GEORGE@CSGNC.COM

LOCATION MAP



- | | |
|---|--|
| 1. Garner Law Firm, Cornerstone Wealth Advisors | 8. Carolina Vein Center |
| 2. Clarke, Phifer, Vaughn, Brenner & McNeill, PLLC | 9. Hubbard Dental |
| 3. Southern Pines Women's Health Center | 10. The Foundation of FirstHealth |
| 4. Fred T. Ridge Dental Practice | 11. Koontz Jones Design, SafeGuard Risk Management |
| 5. Henry Orthodontics | 12. TriCal Soil Solutions |
| 6. Wells Fargo, Sutton Law Firm | 13. Merrill Lynch, Southern Pines Modern Wellness |
| 7. Carolina Center for Oral & Facial Surgery, OsteoStrong Pinehurst | |

HOLLY BELL
 NC BROKER
 C: 910.690.1065
HOLLY@CSGNC.COM

CAROLINA SUMMIT GROUP
 390 SW Broad Street, Suite B
 Southern Pines, NC 28387
 910.684.5353
carolinasummitgroup.com

GEORGE MANLEY
 NC BROKER
 C: 910.603.8395
GEORGE@CSGNC.COM