

6641 N. BROAD STREET

Philadelphia, PA 19126

 FOR SALE

 RETAIL

 13,333+/- SF



PROPERTY HIGHLIGHTS

- Building size: 13,333+/- SF
- Property address is 6641 N. Broad Street & 6701-03 Old York Road (located at the intersection of N. Broad Street and Old York Road)
- Total acreage: 1+/- acre including parcel across the street (0.5 ac each parcel)
- Zoned: CMX 2.5 - Commercial Mixed Use
- Taxes: \$33,595 (includes parcels across the street)
- N. Broad Street Daily Traffic Counts: 30,000+/- vehicles

LOCATION

- Located in a dense residential area
- 2.5 miles to Route 1 & Route 13
- 5.5 miles to I-76
- CVS next door, Dunkin Donuts & McDonald's across the street



SALE PRICE: \$1,950,000

FOR MORE INFORMATION


Rick Gordon

 215.801.8491

 rick.gordon@naimertz.com

NAI MERTZ DISCLAIMER: NO WARRANTY OR REPRESENTATION, EXPRESS OR IMPLIED, IS MADE AS TO THE ACCURACY OF THE INFORMATION CONTAINED HEREIN, AND THE SAME IS SUBMITTED SUBJECT TO ERRORS, OMISSIONS, CHANGE OF PRICE, RENTAL OR OTHER CONDITIONS, PRIOR SALE, LEASE OR FINANCING, OR WITHDRAWAL WITHOUT NOTICE, AND OF ANY SPECIAL LISTING CONDITIONS IMPOSED BY OUR PRINCIPALS. NO WARRANTIES OR REPRESENTATIONS ARE MADE AS TO THE CONDITION OF THE PROPERTY OR ANY HAZARDS CONTAINED THEREIN ARE ANY TO BE IMPLIED. OUTLINES ARE APPROXIMATE AND SHOWN ONLY TO IDENTIFY THE PARCEL IN CONSIDERATION.

NAI Mertz

 **NAI Mertz** | 210 E. Street Road, Suite 3B
Feasterville-Trevose, PA 19053
215-396-2900 | naimertz.com



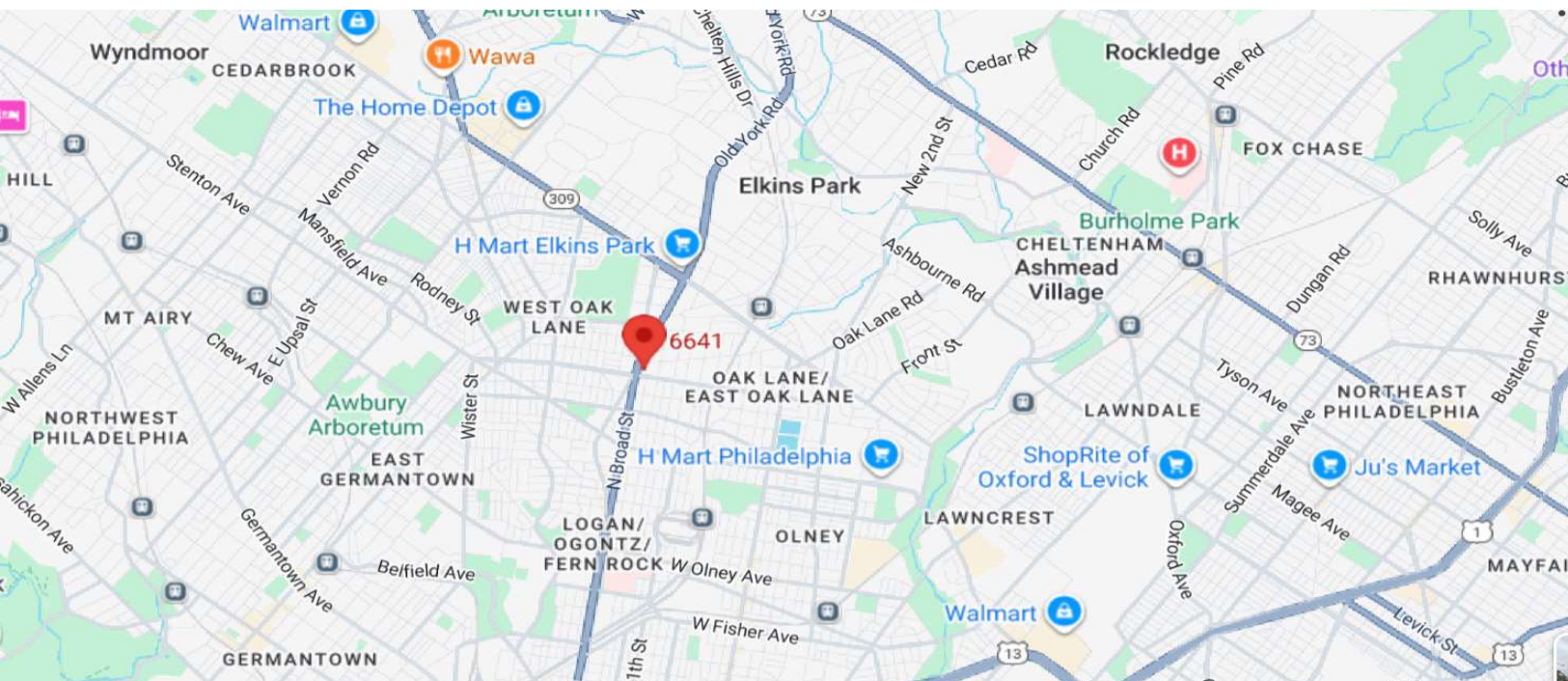
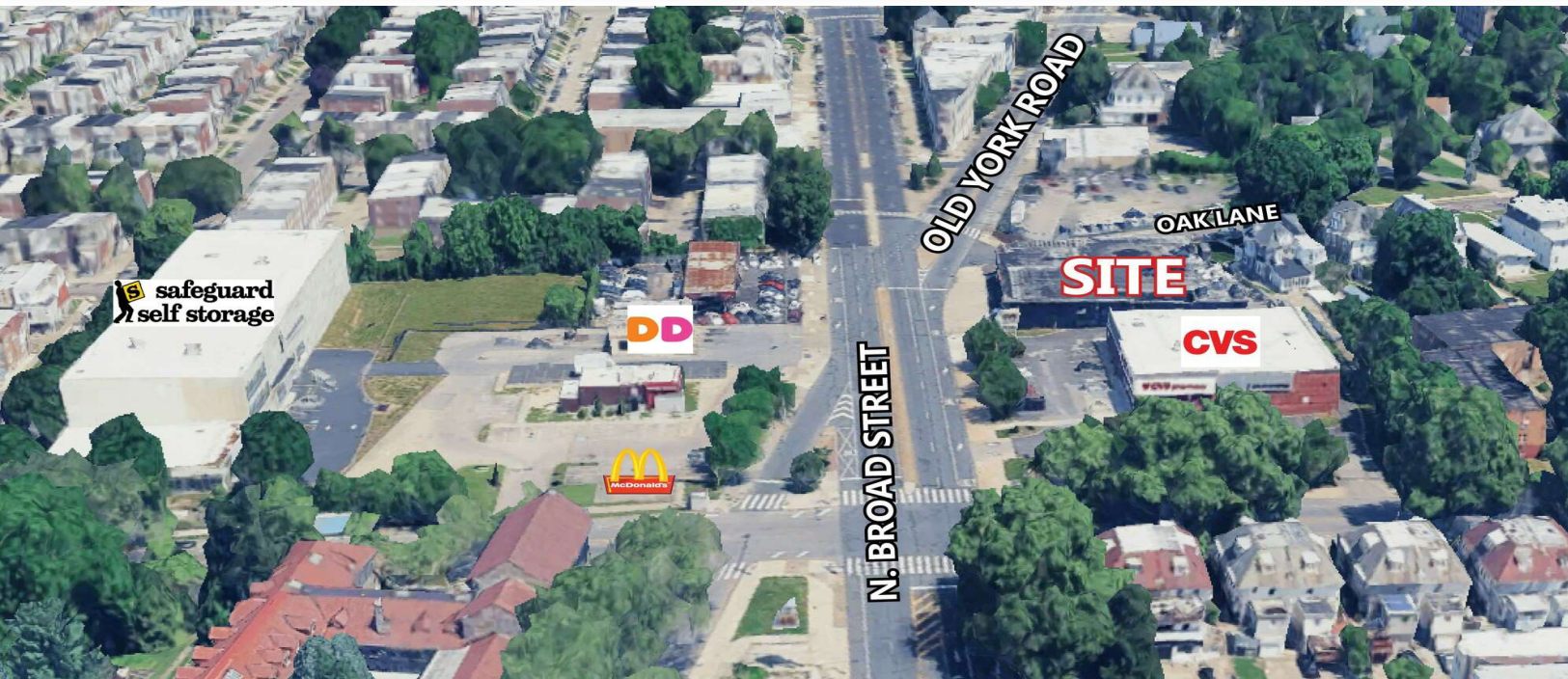
6641 N. BROAD STREET

Philadelphia, PA 19126

 FOR SALE

 RETAIL

 13,333+/- SF



FOR MORE INFORMATION


Rick Gordon

 215.801.8491

 rick.gordon@naimertz.com

NAI MERTZ DISCLAIMER: NO WARRANTY OR REPRESENTATION, EXPRESS OR IMPLIED, IS MADE AS TO THE ACCURACY OF THE INFORMATION CONTAINED HEREIN, AND THE SAME IS SUBMITTED SUBJECT TO ERRORS, OMISSIONS, CHANGE OF PRICE, RENTAL OR OTHER CONDITIONS, PRIOR SALE, LEASE OR FINANCING, OR WITHDRAWAL WITHOUT NOTICE, AND OF ANY SPECIAL LISTING CONDITIONS IMPOSED BY OUR PRINCIPALS. NO WARRANTIES OR REPRESENTATIONS ARE MADE AS TO THE CONDITION OF THE PROPERTY OR ANY HAZARDS CONTAINED THEREIN ARE ANY TO BE IMPLIED. OUTLINES ARE APPROXIMATE AND SHOWN ONLY TO IDENTIFY THE PARCEL IN CONSIDERATION.

NAI Mertz

 **NAI Mertz** | 210 E. Street Road, Suite 3B
Feasterville-Trevose, PA 19053
215-396-2900 | naimertz.com

