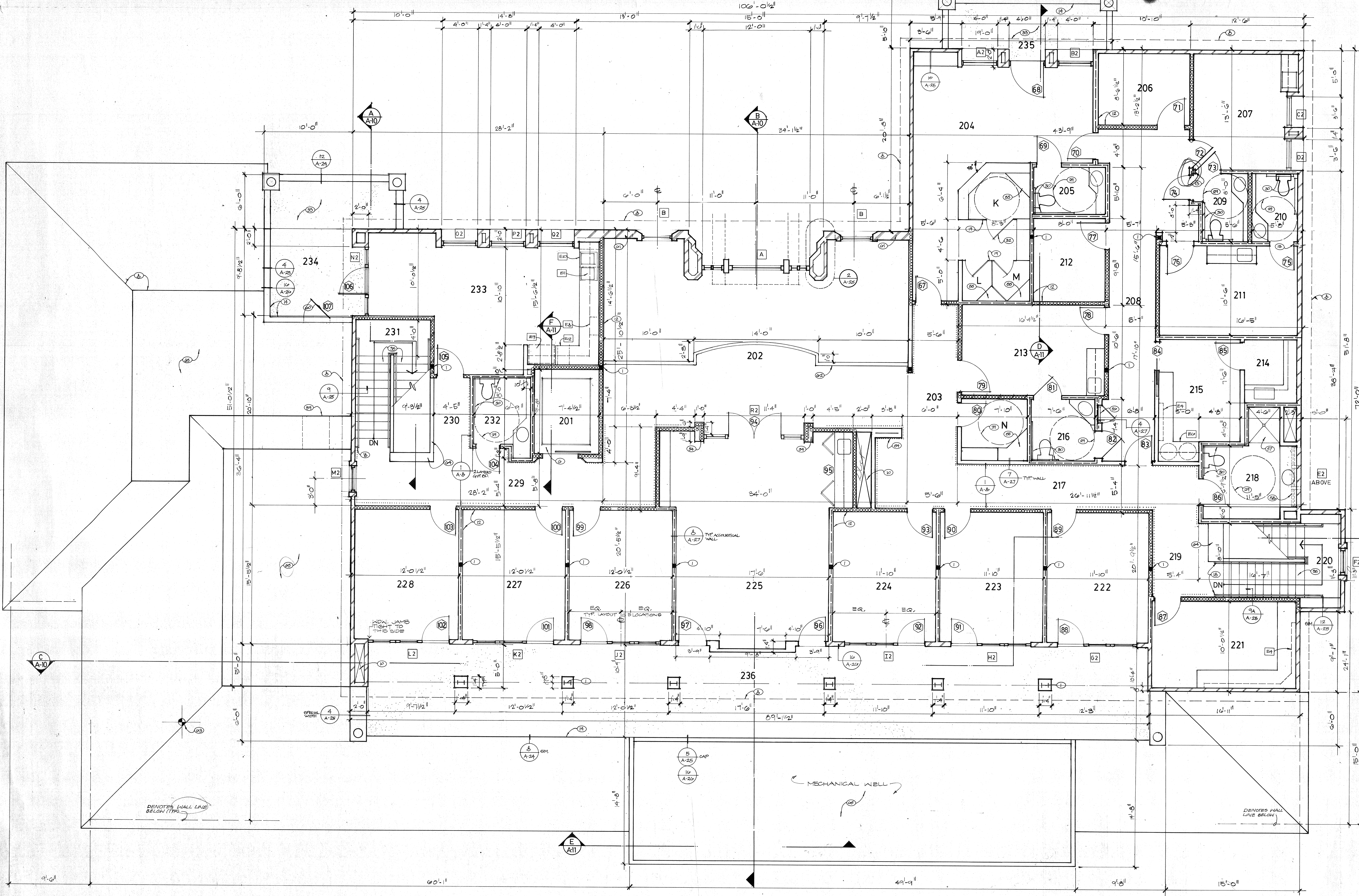
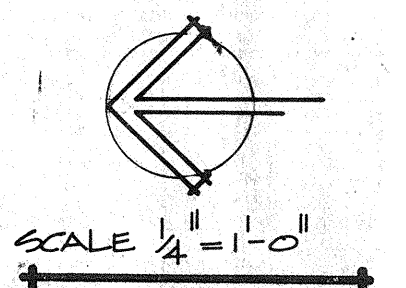


- 201 ELEVATOR SHAFT
- 202 LOBBY BALCONY
- 203 EAST CORRIDOR
- 204 WOMEN'S CENTER LOUNGE
- 205 WOMEN'S CENTER TOILET
- 206 EAST HALLWAY
- 207 EAST ULTRASOUND
- 208 WOMEN'S CORRIDOR
- 209 EAST U.S. PATIENT TOILET
- 210 SOUTH U.S. PATIENT TOILET
- 211 SOUTH ULTRASOUND
- 212 WEST HALLWAY
- 213 QUALITY CONFERENCE
- 214 SOUTH DARE ROOM
- 215 NORTH ULTRASOUND
- 216 NORTH U.S. PATIENT TOILET
- 217 SOUTH CORRIDOR
- 218 DOCTORS' TOILET
- 219 WEST CORRIDOR
- 220 SOUTH STAFFS
- 221 SOUTH READING ROOM
- 222 SOUTH DOCTORS' OFFICE
- 223 SOUTHWEST DOCTORS' OFFICE
- 224 WEST DOCTORS' OFFICE
- 225 CENTRAL CONFERENCE
- 226 MANAGER'S OFFICE
- 227 NORTHWEST DOCTORS' OFFICE
- 228 NORTH DOCTORS' OFFICE
- 229 NORTH CORRIDOR
- 230 LOUNGE VESTIBULE
- 231 NORTH STAFFS
- 232 NORTH STAFF TOILET
- 233 STAFF LOUNGE
- 234 LOUNGE BALCONY
- 235 WOMEN'S CENTER BALCONY
- 236 WEST BALCONY



NOTE: FOR ALL SCHEDULES SEE SHT. A-4



SCALE 1/4" = 1'-0"

ANTHONY C. PINGS AND ASSOCIATES
 ARCHITECTURE, PLANNING AND INTERIOR DESIGN
 1400 W. SHAW AVE.
 SUITE 200, FRESNO, CA 93711
 (509) 221-1992

<p>The City of Anthony C. Pings, architect and interior designer, is hereby acknowledged as the author of the architectural and interior design work shown on this drawing. The architect and interior designer are not responsible for the construction of the building or the installation of the equipment shown on this drawing. The architect and interior designer are not responsible for the construction of the building or the installation of the equipment shown on this drawing.</p>	<p>PROJECT NUMBER: 276</p>	
	<p>ISSUE DATE: 7.06.70</p>	
<p>DRW/INC.</p>		<p>A3</p>
<p>SECOND FLOOR FLOOR PLAN</p>		<p>SHEET OF</p>

ADVANCED MEDICAL IMAGING
 PROJECT NUMBER: 276
 ISSUE DATE: 7.06.70