



# 14,400 SF Industrial Space AI MERIDIAN BUSINESS PARK

3568 E. LANARK ST. | MERIDIAN, IDAHO



## Property Highlights

- 14,400 SF Available for Lease
- 7,200 SF Warehouse
- 7,200 SF Office
- 2,100 SF Storage Mezzanine
- Easily Accessible to the I-84, just 1 mile to the property and 20 minutes to the Boise Airport.



Contact

**Charity Nelson** - Leasing Manager

[adler-industrial.com](http://adler-industrial.com)

 (+1) 208-506-7170

 8665 W. Emerald street, Suite 200,



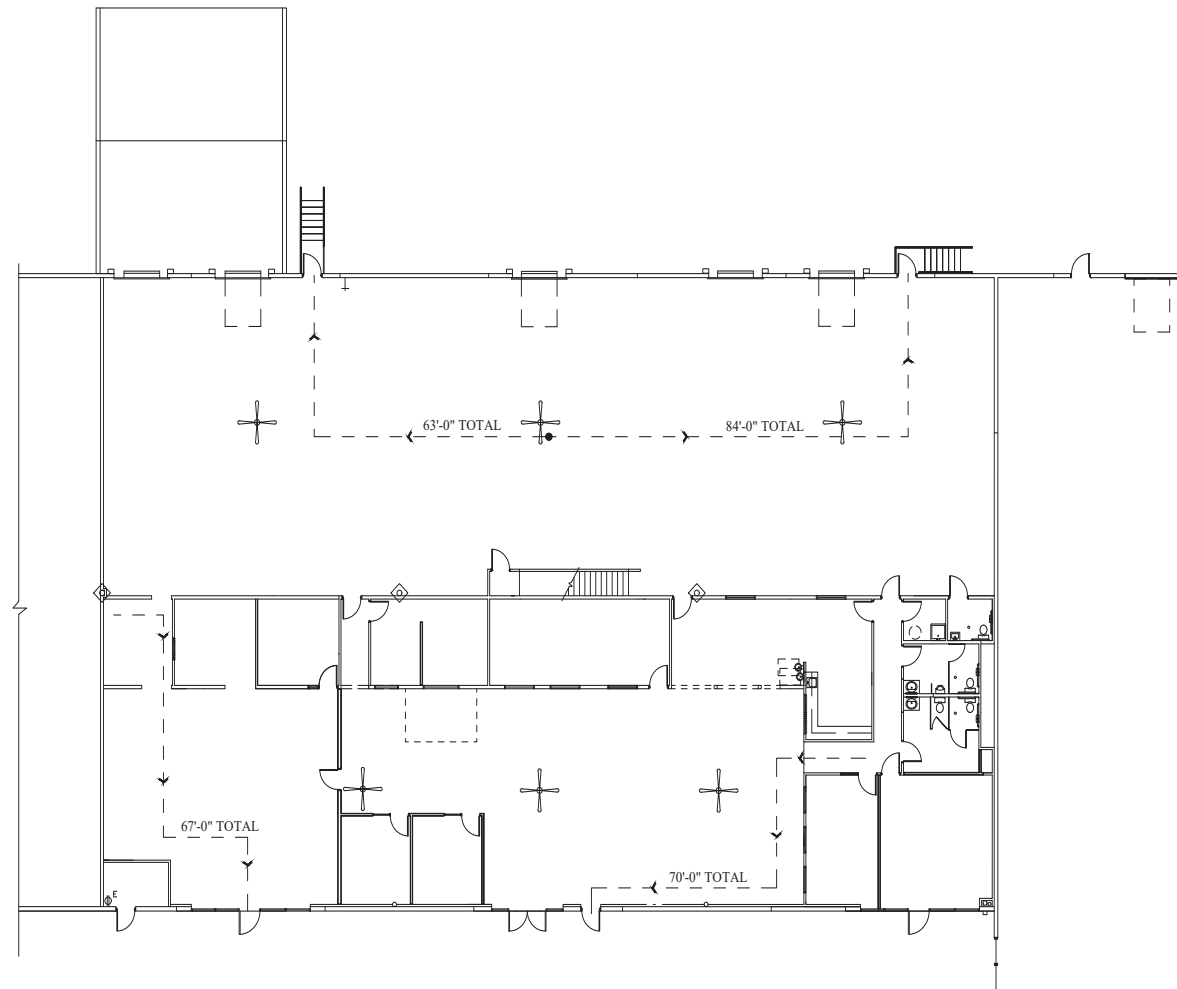
# 14,400 SF Industrial space

Available for lease

3568 E. LANARK ST.  
MERIDIAN, IDAHO

## Building Plan

- **BUILDING TYPE:** Industrial - Class A
- **CONSTRUCTION:** Concrete Tilt
- **YEAR BUILT:** 2020
- **BUILDING SIZE:** 142,800 SF
- **AVAILABLE FOR LEASE:** Q3 2024
- **DIVISIBLE BY:** 14,400 SF
- **LEASE TYPE:** NNN
- **CLEAR HEIGHT:** 24'
- **FIRE:** ESFR System with Fire Pump
- **DOORS:** 2 Docks, 1 Grade Level
- **POWER:** 120/208 - 400 amps
- **LIGHTING:** Yes
- **FANS:** Throughout warehouse
- **HEATING:** Gas Fire Unit Heaters



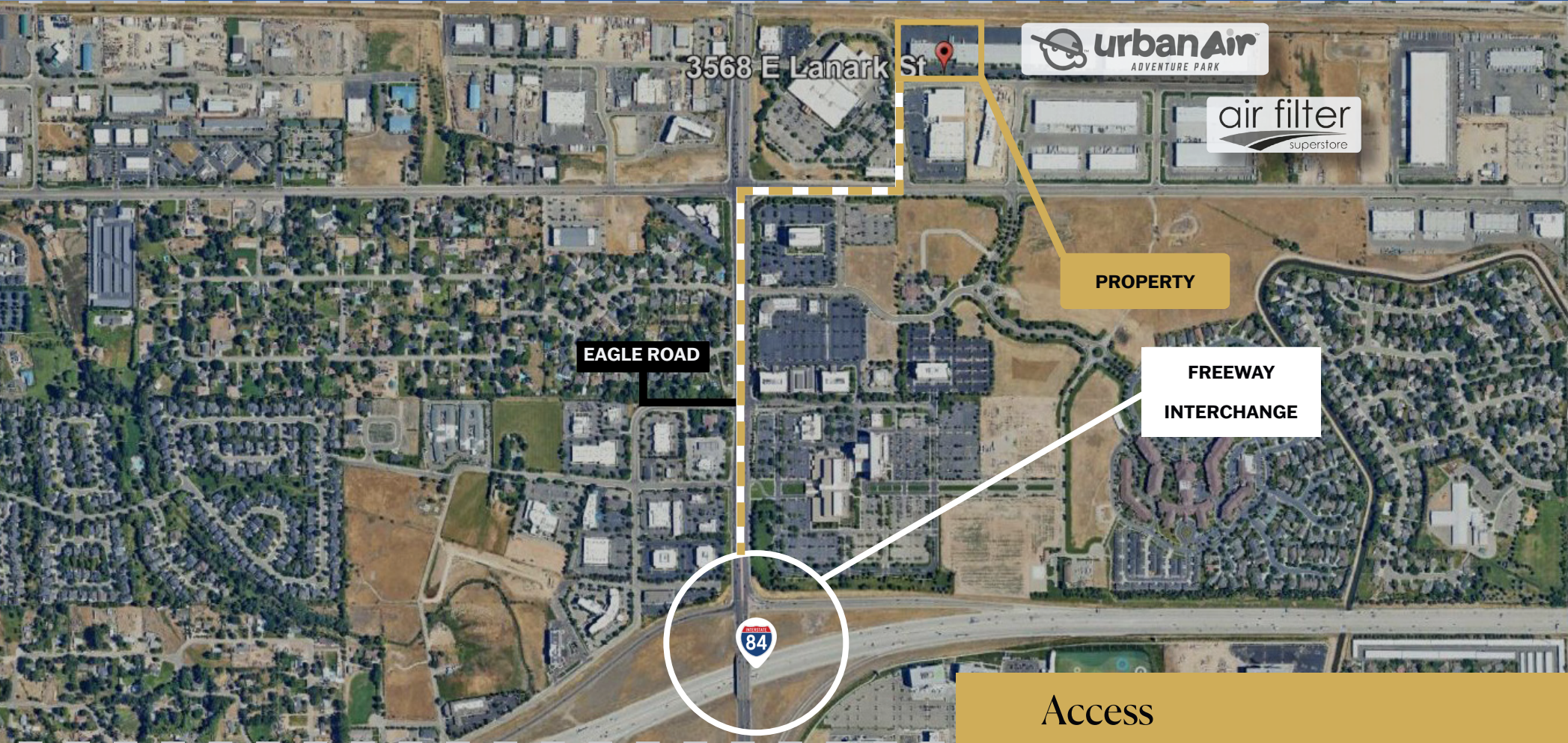
For rates, please contact our  
Leasing Manager



# 14,400 SF Industrial Space

## AI MERIDIAN BUSINESS PARK

3568 E. LANARK ST.  
MERIDIAN, IDAHO



### Access

Boise Airport	+/- 20 min / 10 miles
84-Interstate I	+/- 5 min / 1 mile
Downtown Boise	+/- 20 min / 10 miles



**ADLER**  
INDUSTRIAL

Visit [adler-industrial.com](https://adler-industrial.com) for more information

**80+**

**PROPERTIES ACQUIRED OR**



The largest industrial real estate development and management company in Idaho

Adler Industrial specializes in vertically integrated solutions for Class A industrial development, including developing, constructing, leasing, investing, and property management. With over 4 million square feet of acquired or developed buildings and 1,000 acres of land for future projects, we lead the market in providing comprehensive industrial solutions. Our sister company, Adler Realty Investments, founded in 1996, has acquired or developed 5.9 million square feet of properties, across all asset types nationwide.



Contact

**Charity Nelson** - Leasing Manager

[adler-industrial.com](https://adler-industrial.com)

 (+1) 208-506-7170

 8665 W. Emerald street, Suite 200,