

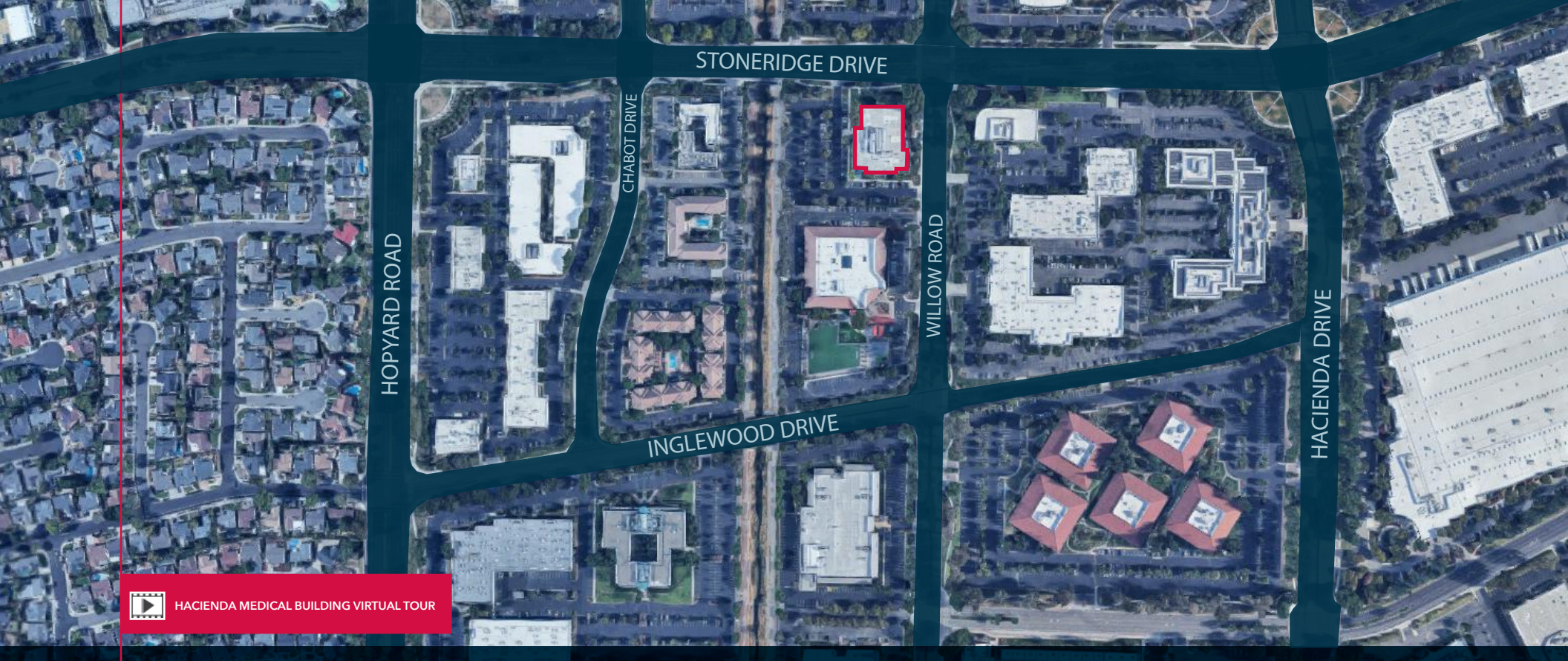


HACIENDA MEDICAL CENTER

1,535±SF UP TO 7,723±SF MEDICAL SPACES FOR LEASE

5924 STONERIDGE DRIVE, PLEASANTON, CA 94588

LOCAL EXPERTISE. INTERNATIONAL REACH. WORLD CLASS.



PROPERTY HIGHLIGHTS



Property type: Medical Office Space



Available: 1,535±SF up to 7,723±SF



One half mile from Valley Care Hospital



Excellent freeway/BART access



Ample on site parking

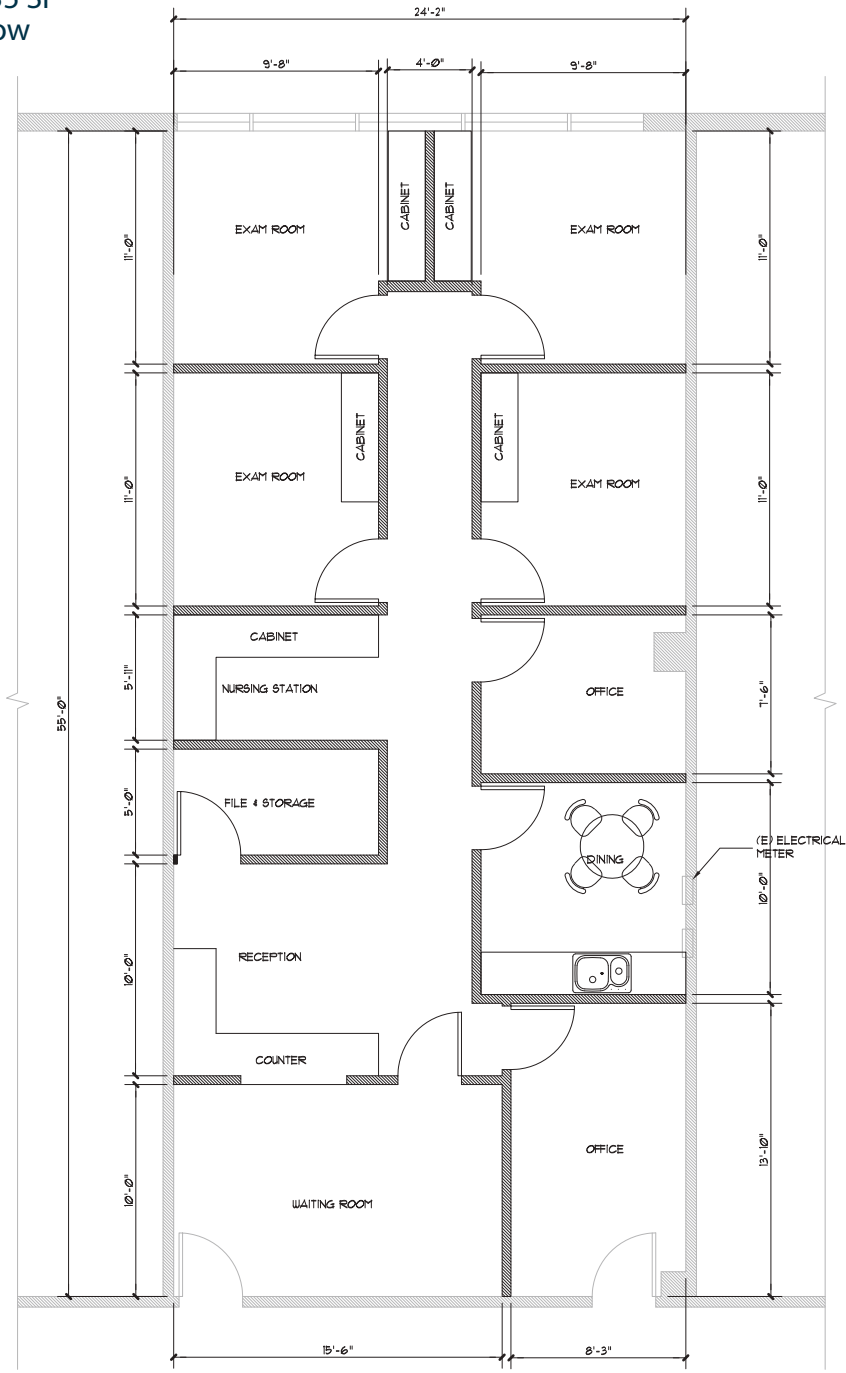


Call Broker for pricing information

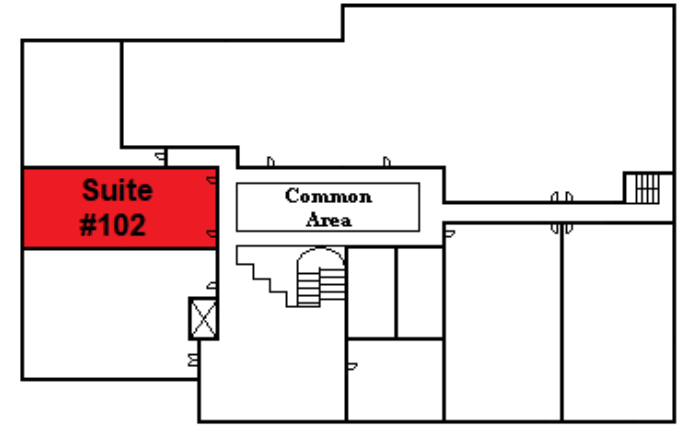
5924
STONERIDGE DRIVE

SITE PLAN - FIRST FLOOR

Suite 102: ±1,535 SF
• Available Now



*Floorplan not to scale



FIRST FLOOR SITE PLAN

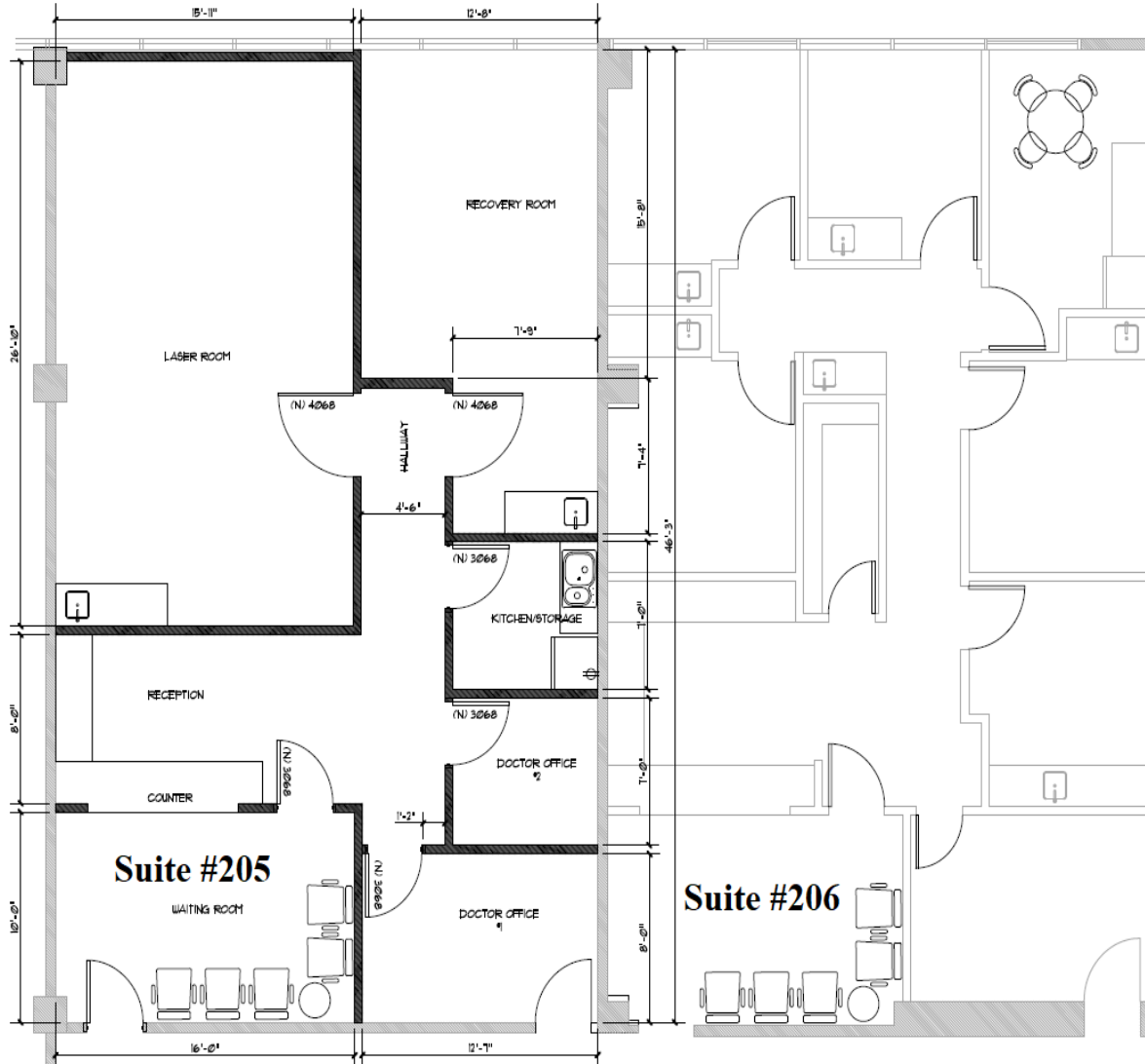
5924
STONERIDGE DRIVE

SITE PLAN - SECOND FLOOR

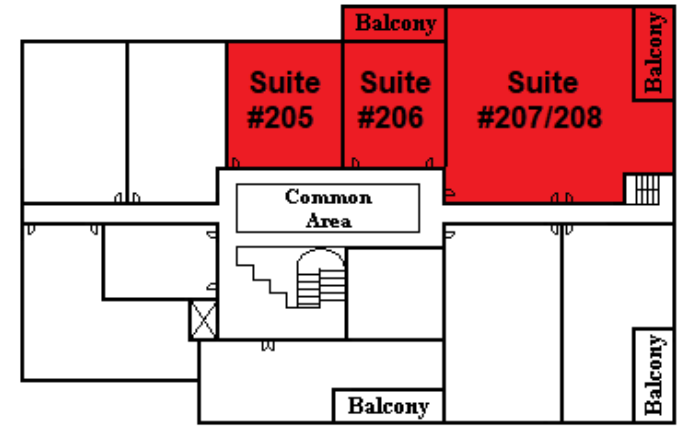
Suite 205: ±1,590 SF  SUITE 205 VIRTUAL TOUR

Suite 206: ±1,584 SF  SUITE 206 VIRTUAL TOUR

- Suites 205 & 206 can be combined for a total of ±3,174 SF



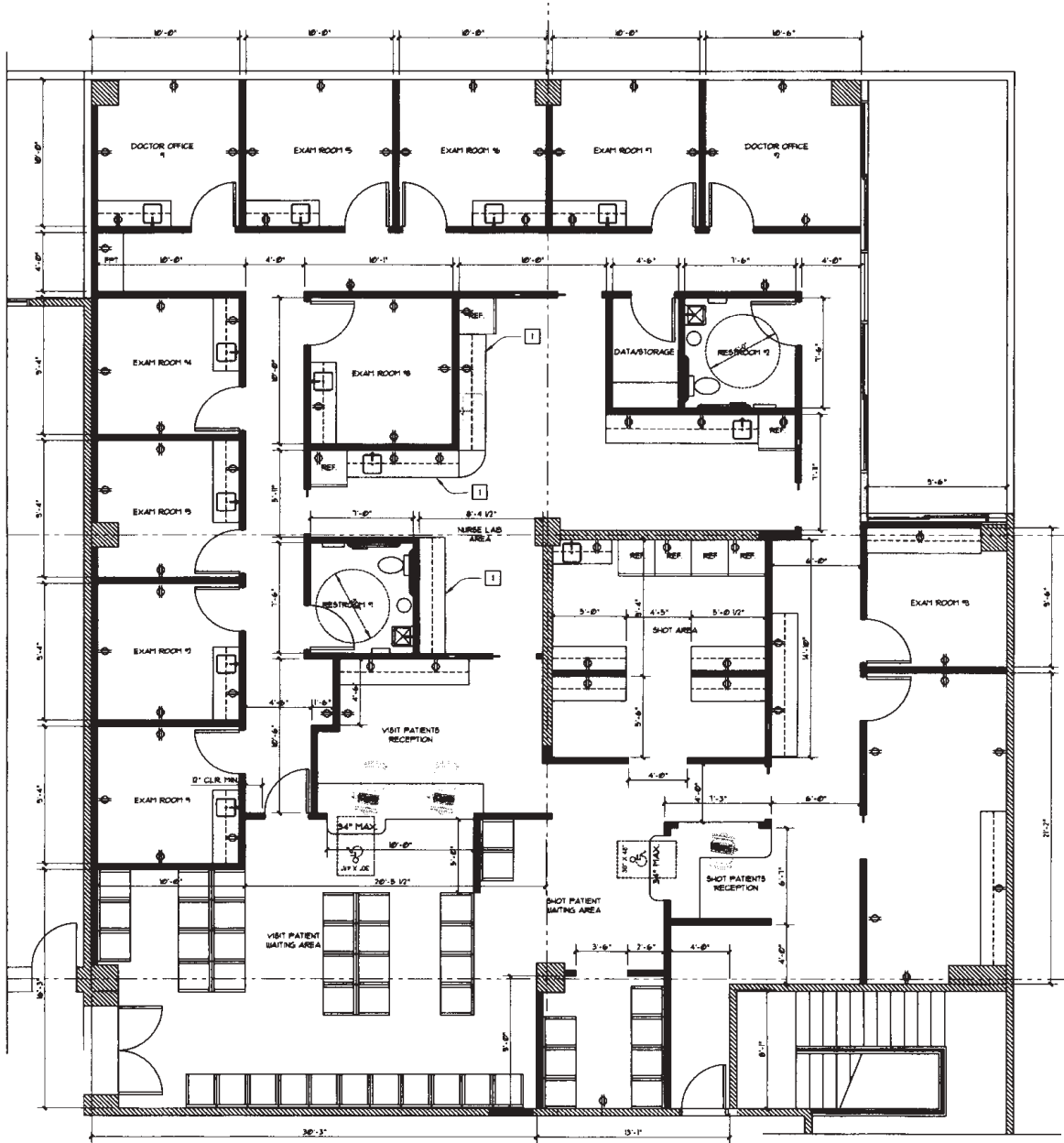
*Floorplan not to scale



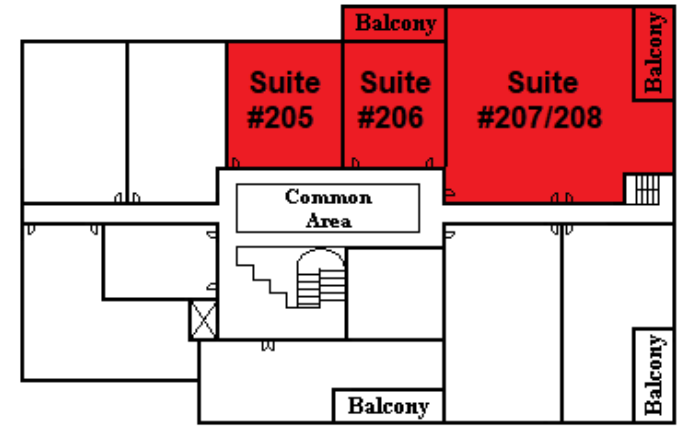
SECOND FLOOR SITE PLAN

- Suites 207/208 can be combined with 205 & 206 for a total of ±7,723 SF

- Available Now



*Floorplan not to scale



SECOND FLOOR SITE PLAN

- Suites 207/208 can be combined with 205 & 206 for a total of ±7,723 SF



SITE PLAN - SECOND FLOOR

5924
STONERIDGE DRIVE

PHOTO GALLERY



FOR LEASE

1,535±SF UP TO 7,723±SF MEDICAL OFFICE SPACES AVAILABLE
AT HACIENDA MEDICAL CENTER

5924 STONERIDGE DRIVE | PLEASANTON CA 94588



Mark Rinkle

Principal
mrinkle@lee-associates.com
925-737-4145
LIC NO 01512632