



For lease

John Carpin

Senior Vice President
+1 804 267 7216
john.carpin@colliers.com

Jimmy Martin, SIOR

Senior Vice President
+1 804 267 7218
jimmy.martin@colliers.com

2221 Edward Holland Dr
Suite 600 | Richmond, VA
P: +1 804 320 5500
colliers.com/richmond

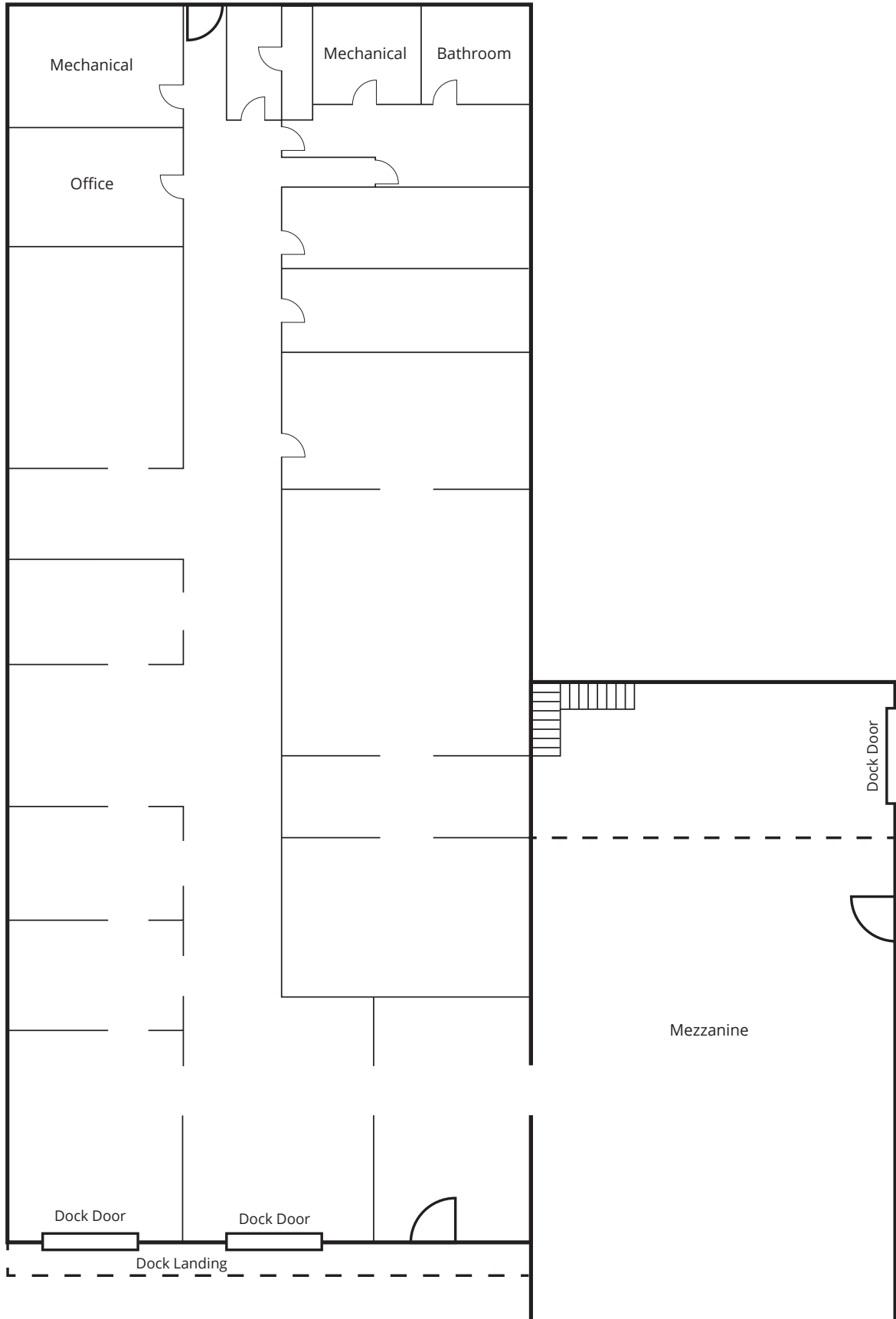
2407-2409 Westwood Ave, Richmond, VA

Excellent Central Location near Scott's Addition at Westwood and I-195

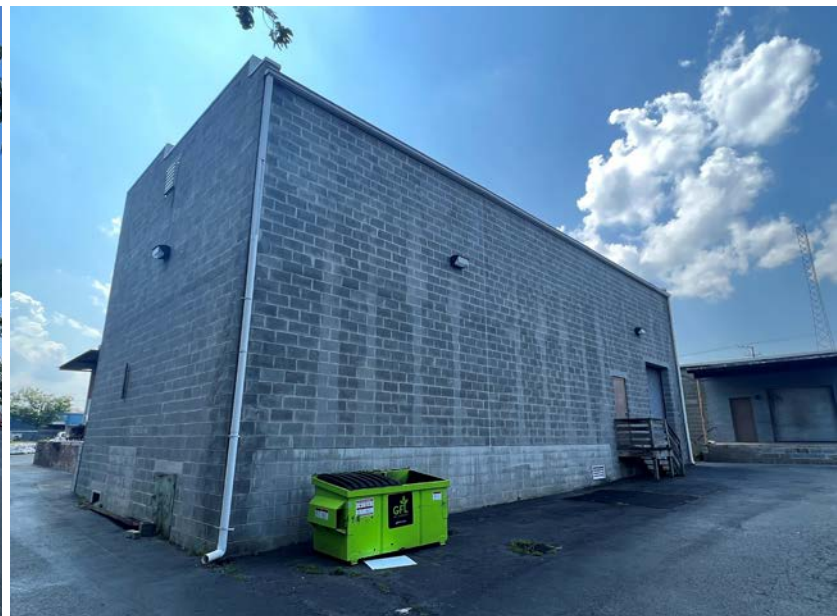
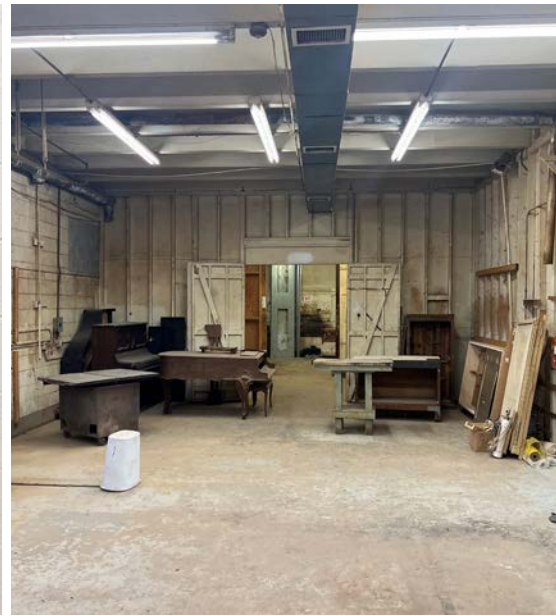
Warehouse available for lease

- 10,916 SF warehouse available immediately for lease
- 15,216 SF building
 - 4,300 SF occupied
 - 10,916 SF available
- Two 8' x 11' dock platform doors in rear, one 8' x' 10 dock door on warehouse annex
- One warehouse office and bathroom
- 12' clear in main warehouse, 20' feet in warehouse annex
- Main warehouse is fully conditioned
- M-1 Zoning
- 34 parking spaces

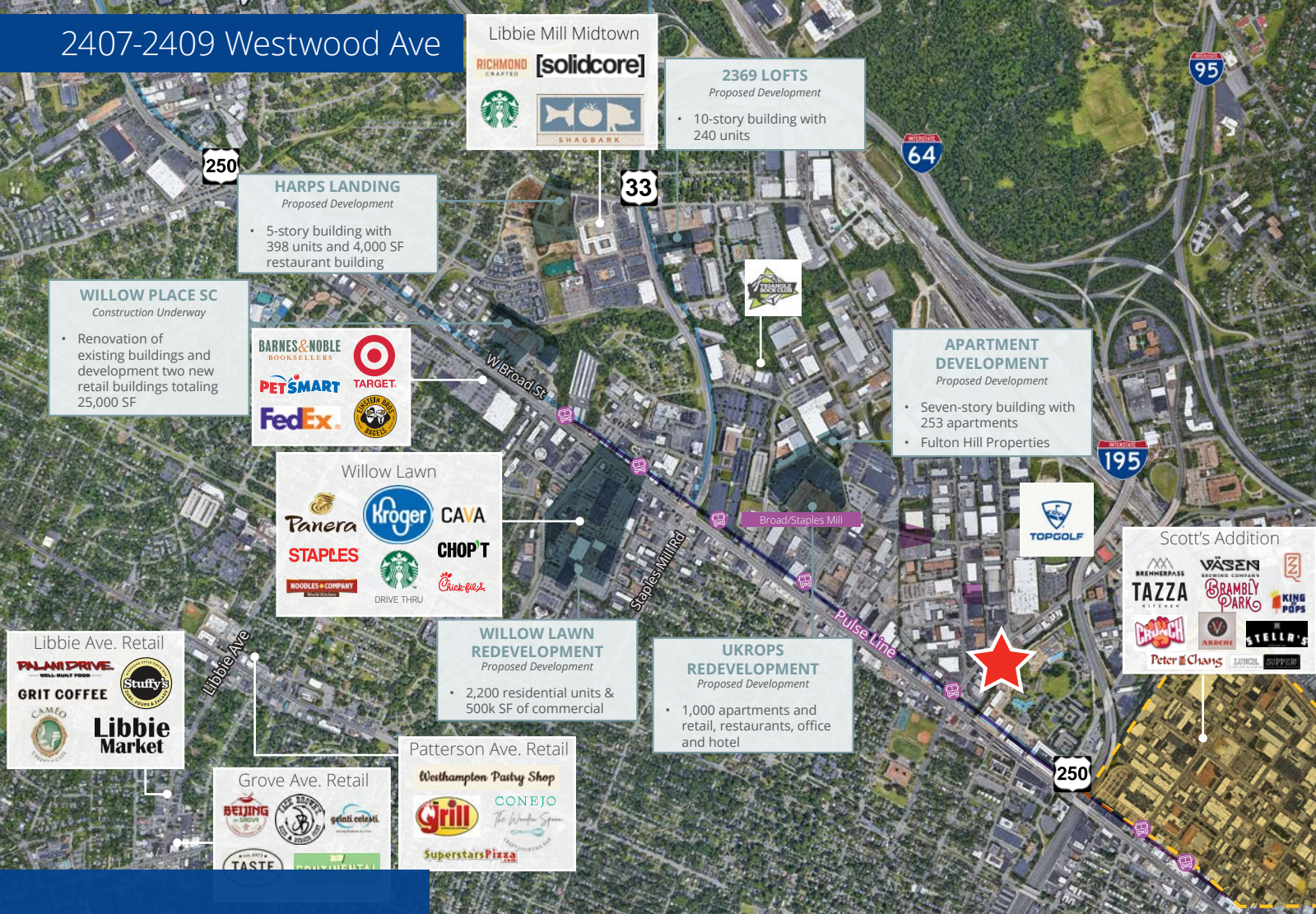
Floor Plan
10,916 SF available



2407-2409 Westwood Ave



2407-2409 Westwood Ave



Libbie Mill Midtown

RICHMOND CRAFTED [solidcore]

Starbucks

SHAGBARK

2369 LOFTS
Proposed Development

- 10-story building with 240 units

HARPS LANDING
Proposed Development

- 5-story building with 398 units and 4,000 SF restaurant building

WILLOW PLACE SC
Construction Underway

- Renovation of existing buildings and development two new retail buildings totaling 25,000 SF

BARNES & NOBLE BOOKSELLERS

PETSMART

FedEx

TARGET

POSTNET MAIL SERVICES

APARTMENT DEVELOPMENT
Proposed Development

- Seven-story building with 253 apartments
- Fulton Hill Properties

Willow Lawn

Panera

Kroger

CAVA

STAPLES

CHOP'T

NOODLES & COMPANY

STARBUCKS DRIVE THRU

Chick-fil-ee

WILLOW LAWN REDEVELOPMENT
Proposed Development

- 2,200 residential units & 500k SF of commercial

UKROPS REDEVELOPMENT
Proposed Development

- 1,000 apartments and retail, restaurants, office and hotel

Libbie Ave. Retail

PALM DRIVE WELL-BUILT FOOD

GRIT COFFEE

Stuffy's

CAMEO

Libbie Market

Grove Ave. Retail

BEIJING

THE BOBBY

get it. eat it.

TASTE

PRINCEHTA

Patterson Ave. Retail

Westhampton Pastry Shop

Grill

CONEJO The Wanda System

SuperstarsPizza.com

Scott's Addition

BRENNERPASS

TAZZA

VASEN

BRAMBLY PARK

KING POPS

Peter & Chang

ARDCO

STELLA'S

LOUNGE

CHIPPIN

John Carpin
Senior Vice President
+1 804 267 7216
john.carpin@colliers.com

Jimmy Martin, SIOR
Senior Vice President
+1 804 267 7218
jimmy.martin@colliers.com

Colliers
2221 Edward Holland Dr
Suite 600 | Richmond, VA
P: +1 804 320 5500



Copyright © 2024 Colliers International. Information herein has been obtained from sources deemed reliable, however its accuracy cannot be guaranteed. The user is required to conduct their own due diligence and verification.