

# INDIGO VILLAGE

1662 Savannah Hwy, Charleston, SC 29407



**Contact:**

Vitré Ravenel Stephens  
Partner

+1.843.513.7555

[vitre.stephens@harborcommercialpartners.com](mailto:vitre.stephens@harborcommercialpartners.com)

# INDIGO VILLAGE

1662 Savannah Hwy, Charleston, SC 29407

## PROPERTY INFORMATION

TAX MAP ID	350-02-00-001
COUNTY	CHARLESTON
MUNICIPALITY	CHARLESTON
YEAR BUILT	1980
ZONING	GENERAL BUSINESS
PARKING	SURFACE PARKING ONSITE
TRAFFIC COUNT	43,600 VPD
NNN	\$3.72 PSF

## OFFERING

SUITE	SIZE	LEASE RATE	LEASE TYPE	AVAILABLE
100	3,120 SF	\$30 PSF	NNN	NOW
225	1,200 SF	\$22 PSF	NNN	1/1/25

## HIGHLIGHTS

Indigo Village is a shopping center located next to Chick-fil-A on Savannah Hwy with other tenants to include Santi's, Wonder Works, The Little Gym, Ashley Bakery, Jackson Hewitt and many others.

Suite 100 - Prime endcap restaurant space with a patio, available for sublease. Located directly on Savannah Hwy with 43,600 vehicles per day. Furniture, fixtures, and equipment can be purchased at an additional price.

Suite 225 - A 1,200 SF former yoga studio for lease, available January 1, 2025.



### Contact:

Vitré Ravenel Stephens  
Partner  
+1.843.513.7555

[vitre.stephens@harborcommercialpartners.com](mailto:vitre.stephens@harborcommercialpartners.com)

# INDIGO VILLAGE

1662 Savannah Hwy, Charleston, SC 29407



**Harbor**  
COMMERCIAL PARTNERS

**Contact:**

Vitré Ravenel Stephens  
Partner  
+1.843.513.7555

[vitre.stephens@harborcommercialpartners.com](mailto:vitre.stephens@harborcommercialpartners.com)

# INDIGO VILLAGE

1662 Savannah Hwy, Charleston, SC 29407



**Harbor**  
COMMERCIAL PARTNERS

**Contact:**

Vitré Ravenel Stephens  
Partner  
+1.843.513.7555  
[vitre.stephens@harborcommercialpartners.com](mailto:vitre.stephens@harborcommercialpartners.com)

# INDIGO VILLAGE

1662 Savannah Hwy, Charleston, SC 29407



**Harbor**  
COMMERCIAL PARTNERS

**Contact:**

Vitré Ravenel Stephens  
Partner  
+1.843.513.7555  
vitre.stephens@harborcommercialpartners.com

# INDIGO VILLAGE

1662 Savannah Hwy, Charleston, SC 29407

## SITE PLAN - BLDG 100



# INDIGO VILLAGE

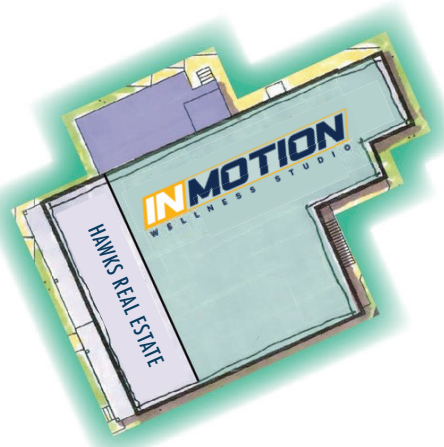
1662 Savannah Hwy, Charleston, SC 29407

## SITE PLAN - BLDG 200 & 300



### 300 | 1st Floor

Available for lease



### 300 | 2nd Floor

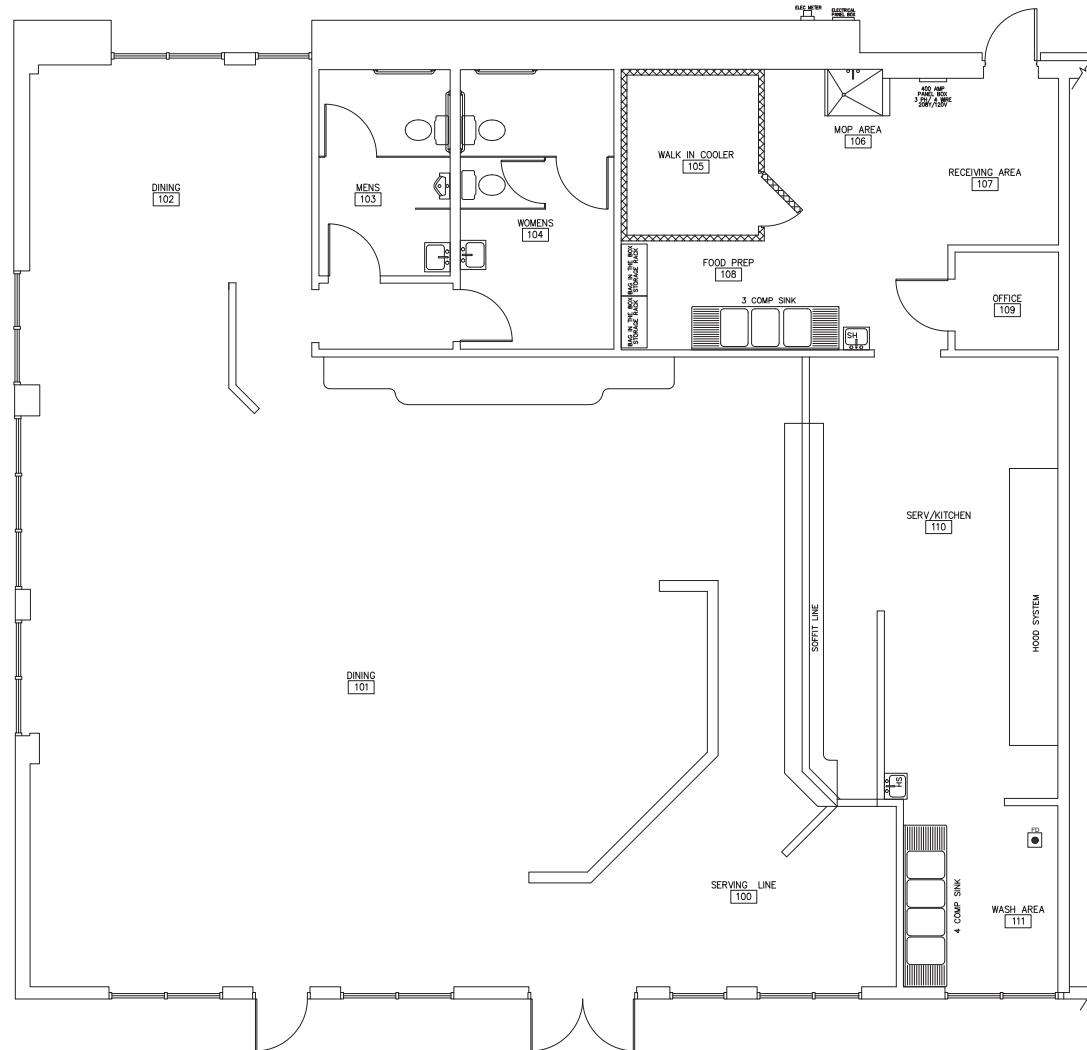
Our Spa  
Delson Computers  
Charleston Roofing & Exteriors



# INDIGO VILLAGE

1662 Savannah Hwy, Charleston, SC 29407

## SUITE 100 - FLOOR PLAN





# INDIGO VILLAGE

1662 Savannah Hwy, Charleston, SC 29407

## LOCATION



### Contact:

Vitré Ravenel Stephens  
Partner  
+1.843.513.7555

[vitre.stephens@harborcommercialpartners.com](mailto:vitre.stephens@harborcommercialpartners.com)

# INDIGO VILLAGE

1662 Savannah Hwy, Charleston, SC 29407

## AMENITIES



**Harbor**  
COMMERCIAL PARTNERS

Contact:

Vitré Ravenel Stephens  
Partner  
+1.843.513.7555  
vitre.stephens@harborcommercialpartners.com

# INDIGO VILLAGE

1662 Savannah Hwy, Charleston, SC 29407

## DEMOGRAPHICS

ONE MILE

THREE MILE

FIVE MILE



POPULATION

**8,571**

**49,244**

**137,604**



TOTAL BUSINESSES

**1,047**

**4,373**

**12,203**



MEDIAN AGE

**40.4**

**40.4**

**38**



AVG HOUSEHOLD INCOME

**\$88,384**

**\$95,142**

**\$93,647**

**Contact:**

Vitré Ravenel Stephens  
Partner

+1.843.513.7555

[vitre.stephens@harborcommercialpartners.com](mailto:vitre.stephens@harborcommercialpartners.com)



**Contact us:**

146 Williman Street, Units 300 & 400  
Charleston, SC 29403

[www.harborcommercialpartners.com](http://www.harborcommercialpartners.com)

+1.843.994.7198



**Vitre Ravenel Stephens**

Partner

+1.843.513.7555

[vitre.stephens@harborcommercialpartners.com](mailto:vitre.stephens@harborcommercialpartners.com)