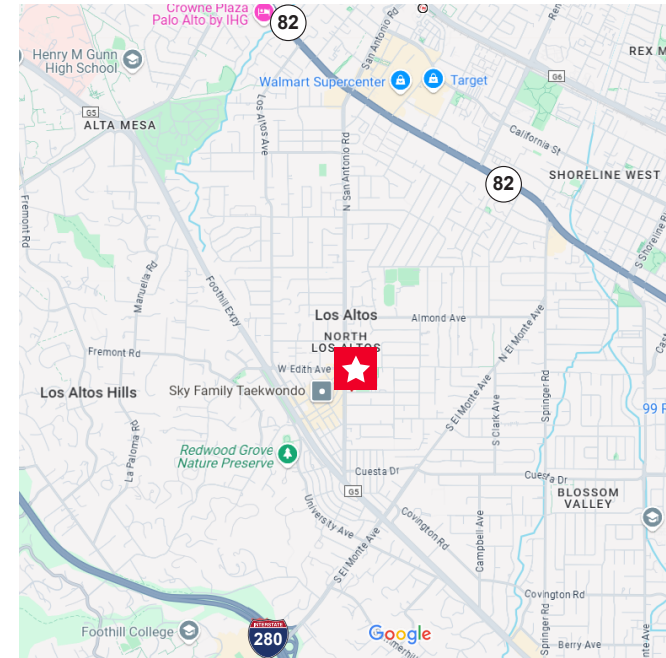


FOR LEASE

167 S. SAN ANTONIO ROAD

Los Altos, California



±1,224 TO ±8,978 SF CLASS A OFFICE SPACE (DIVISIBLE TO ±8,978 SF, ±7,266 SF, & ±1,712 SF)

Property Highlights:

- Class A Downtown Los Altos Office Space
- Flexible Configuration w/ Privates and Open Office
- High Identity Location
- Surface & Underground Parking
- Beautiful Courtyard
- Walk to All Downtown Amenities

For more information, contact:

Scott O'Brien

Director

+1 650 320 0296

scott.obrien@cushwake.com

LIC #01339087

525 University Ave, Ste 220
Palo Alto, California 94301
main +1 650 852 1200
fax +1 650 618 8560
cushmanwakefield.com

©May 6, 2025 1:35 PM Cushman & Wakefield. All rights reserved. The information contained in this communication is strictly confidential. This information has been obtained from sources believed to be reliable but has not been verified. No warranty or representation, express or implied, is made as to the condition of the property (or properties) referenced herein or as to the accuracy or completeness of the information contained herein, and same is submitted subject to errors, omissions, change of price, rental or other conditions, withdrawal without notice, and to any special listing conditions imposed by the property owner(s). Any projections, opinions or estimates are subject to uncertainty and do not signify current or future property performance.

FOR LEASE

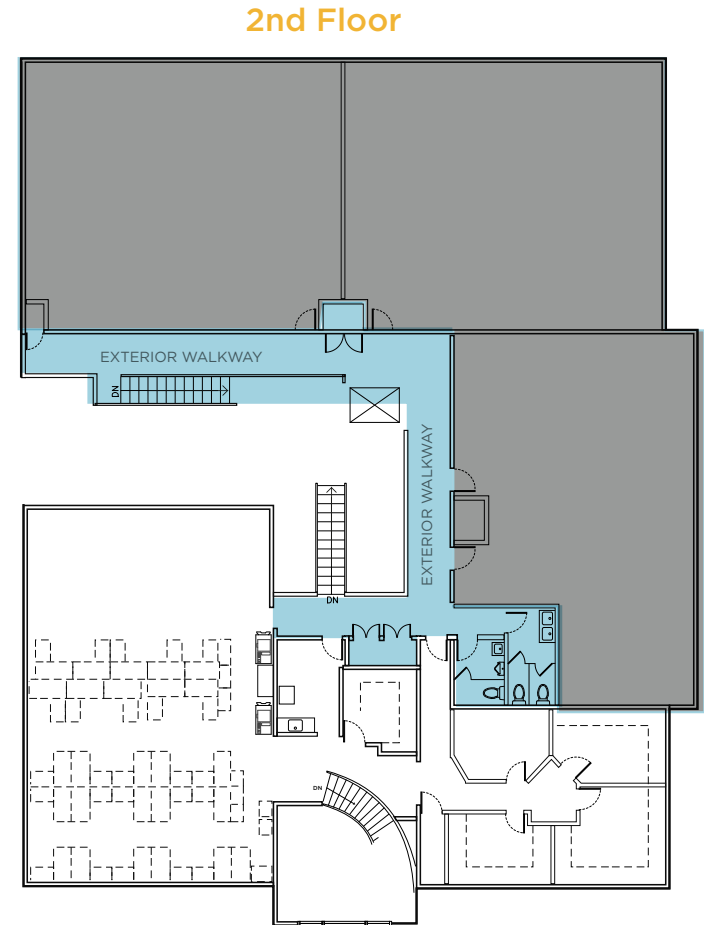
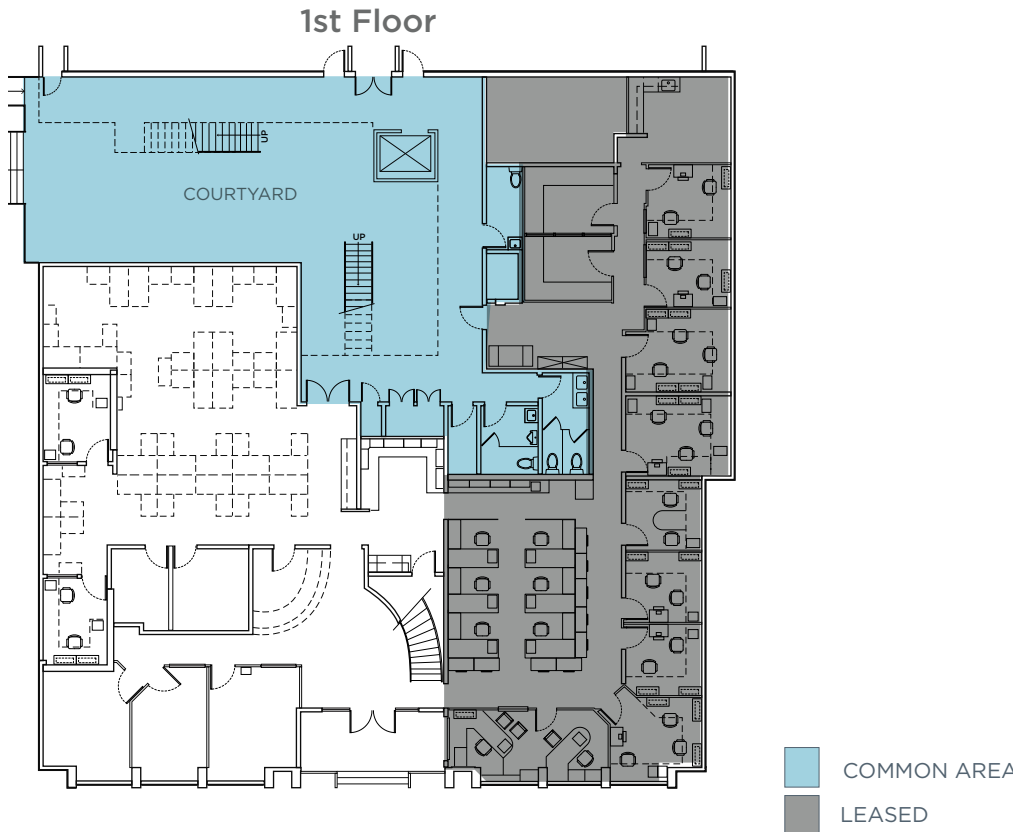
167 S. SAN ANTONIO ROAD

Los Altos, California



Floor Plans:

Suite 1: ±8,978 SF | Total 1st & 2nd Floor | Current Configuration



Floor plan not to scale

For more information, contact:

Scott O'Brien

Director

+1 650 320 0296

scott.obrien@cushwake.com

LIC #01339087

525 University Ave, Ste 220

Palo Alto, California 94301

main +1 650 852 1200

fax +1 650 618 8560

cushmanwakefield.com

©May 6, 2025 1:35 PM Cushman & Wakefield. All rights reserved. The information contained in this communication is strictly confidential. This information has been obtained from sources believed to be reliable but has not been verified. No warranty or representation, express or implied, is made as to the condition of the property (or properties) referenced herein or as to the accuracy or completeness of the information contained herein, and same is submitted subject to errors, omissions, change of price, rental or other conditions, withdrawal without notice, and to any special listing conditions imposed by the property owner(s). Any projections, opinions or estimates are subject to uncertainty and do not signify current or future property performance.

FOR LEASE

167 S. SAN ANTONIO ROAD

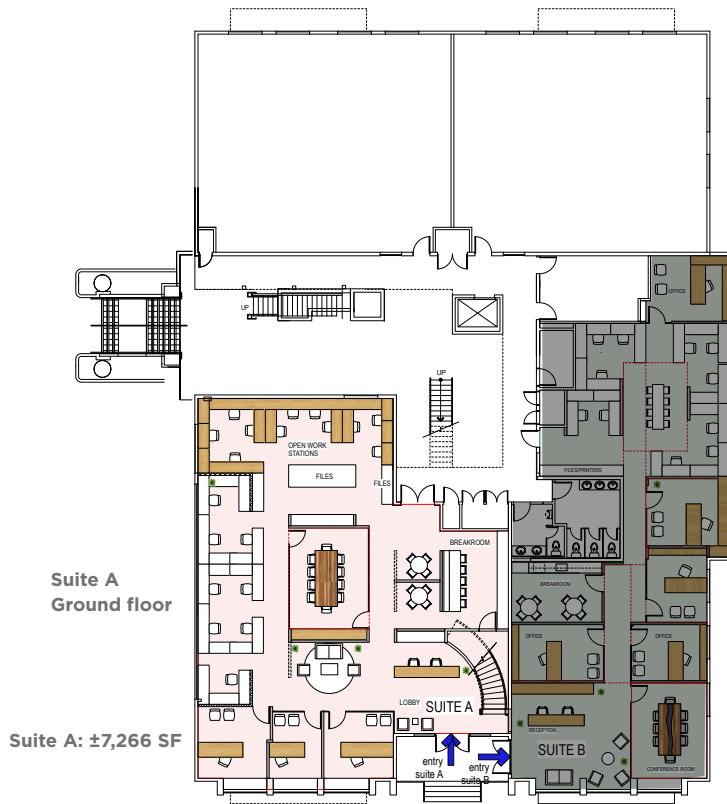
Los Altos, California



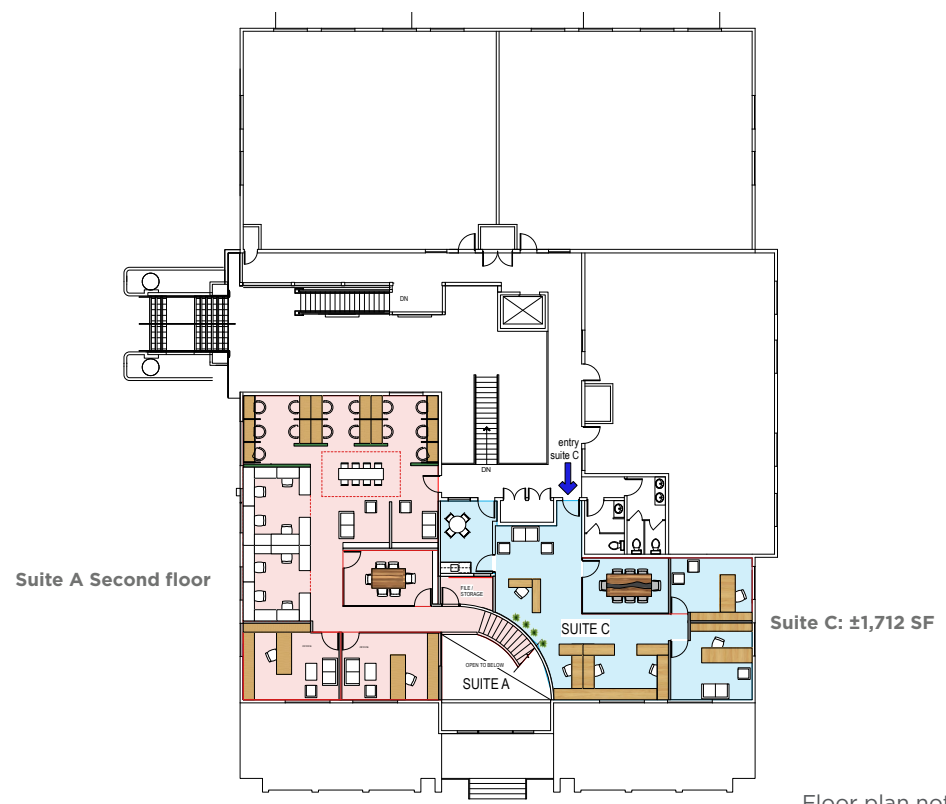
Floor Plans:

Suite A: $\pm 7,266$ SF | Suite C: $\pm 1,712$ SF | Potential Alternative Layouts

1st Floor



2nd Floor



Floor plan not to scale

For more information, contact:

Scott O'Brien

Director

+1 650 320 0296

scott.obrien@cushwake.com

LIC #01339087

525 University Ave, Ste 220

Palo Alto, California 94301

main +1 650 852 1200

fax +1 650 618 8560

cushmanwakefield.com

©May 6, 2025 1:35 PM Cushman & Wakefield. All rights reserved. The information contained in this communication is strictly confidential. This information has been obtained from sources believed to be reliable but has not been verified. No warranty or representation, express or implied, is made as to the condition of the property (or properties) referenced herein or as to the accuracy or completeness of the information contained herein, and same is submitted subject to errors, omissions, change of price, rental or other conditions, withdrawal without notice, and to any special listing conditions imposed by the property owner(s). Any projections, opinions or estimates are subject to uncertainty and do not signify current or future property performance.

FOR LEASE

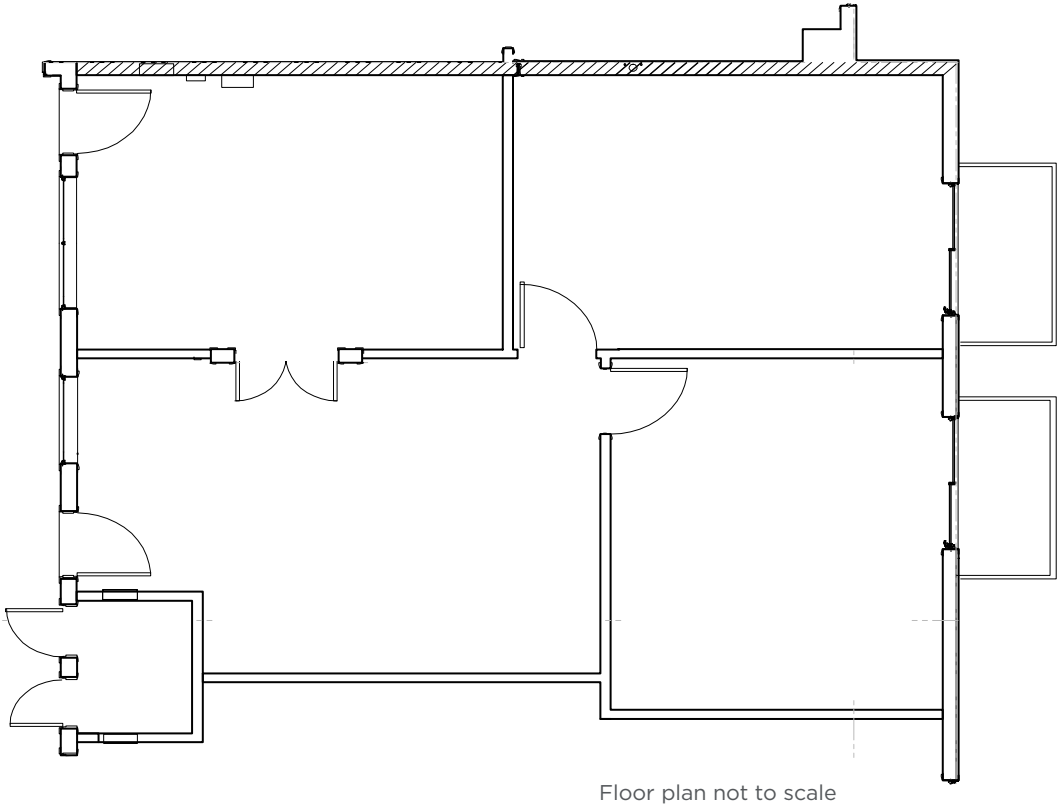
167 S. SAN ANTONIO ROAD

Los Altos, California

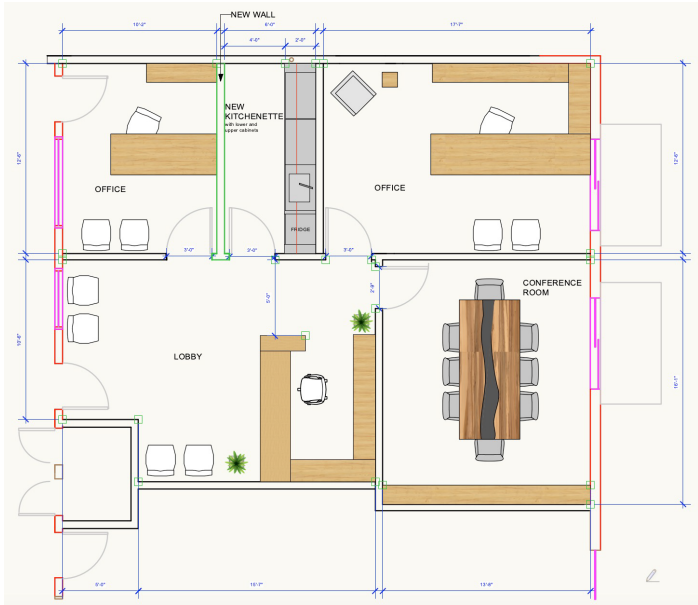


Floor Plan:

Suite 14: ±1,224 SF



Option A Layout



Option B Layout

