



# For sublease

1111 Metropolitan Ave  
Charlotte, NC  
Suite 330 | 3,427 SF



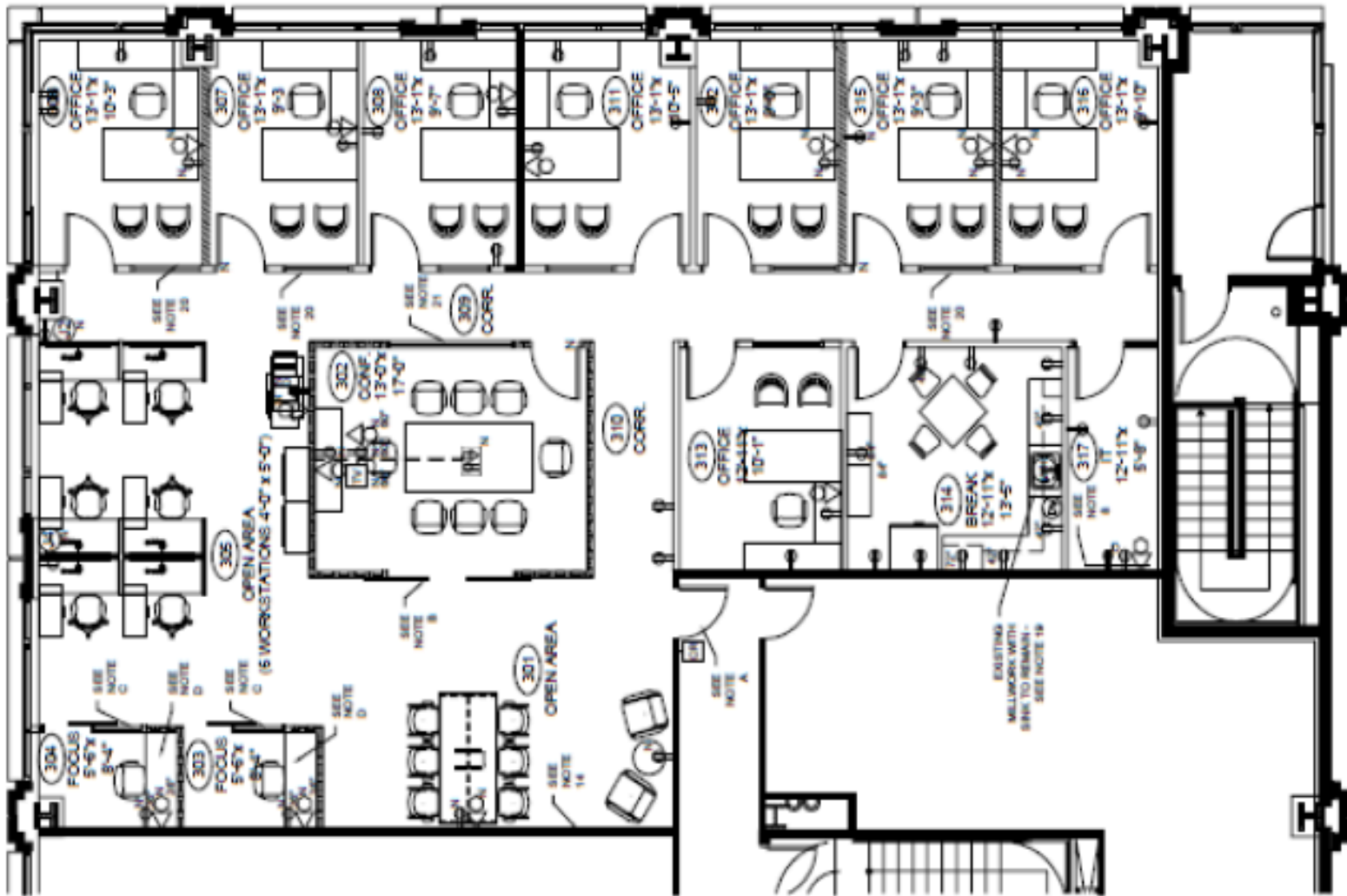


<b>Lease Expiration</b>	May 2028
<b>Availability</b>	Immediately
<b>Asking Rate</b>	Negotiable
<b>FF&amp;E</b>	Negotiable
<b>Parking</b>	3.0/1,000 SF



## Features & Amenities:

- Locker room and showers
- Structured parking
- Direct access to Lower Sugar Creek Greenway
- Walkable to an array of dining and retail, including Trader Joe's and Target



## VIRTUAL TOUR



**ROSS HOWARD**

M +1 336 456 5569

[ross.howard@jll.com](mailto:ross.howard@jll.com)