

Build-Ready Pad Site at Victory Ridge

10841 Hidden Pool Heights | Colorado Springs, CO 80908



PROPERTY SIZE

0.20 AC

PRICING

\$350,000

CITY/COUNTY

Colorado Springs/El Paso

ZONING

PDZ

ABOUT THE PROPERTY

- Rare opportunity to maximize building footprint on a small acreage parcel.
- All regional detention, landscaping, parking, and public access in place.
- Property is rough graded.

CONTACT

Tony Pierangeli | 303.390.5257 | tony.pierangeli@srsre.com

Patrick McGlinchey | 210.303.3149 | patrick.mcglinchey@srsre.com

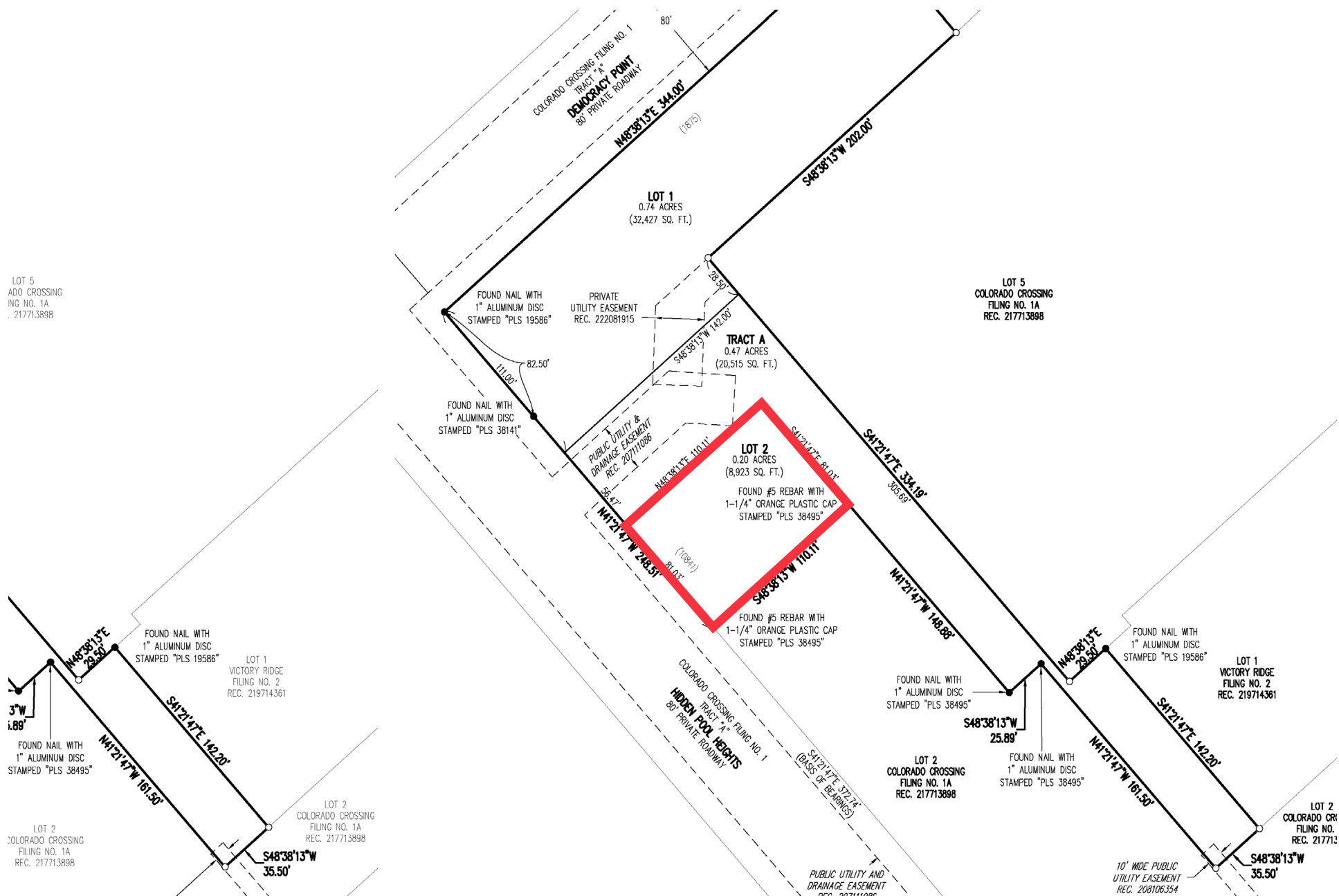
Justin Gregory | 303.803.7170 | justin.gregory@srsre.com

DEMOGRAPHICS

	1 Mile	3 Miles	5 Miles
Population	6,175	40,841	127,632
Daytime Population	9,588	62,325	141,286
Avg. Household	\$171,626	\$167,807	\$154,255
Estimated House-	2,638	15,325	46,884

Year: 2025 | Source: esri

10841 Hidden Pool Heights | Colorado Springs, CO 80908



10841 Hidden Pool Heights | Colorado Springs, CO 80908





SRS Real Estate Partners
1875 Lawrence Street, Suite 850
Denver, CO 80202
303.572.1800

Tony Pierangeli
303.390.5257
tony.pierangeli@srsre.com

Patrick McGlinchey
210.303.3149
patrick.mcglinchey@srsre.com

Justin Gregory
303.803.7170
justin.gregory@srsre.com

IN-N-OUT BURGER
Regional Headquarters

**89 Single
Family Units
& 140 Condos**

**Town Homes
221 Units**

**Park
8 Acres**

SRSRE.COM

© SRS Real Estate Partners

The information presented was obtained from sources deemed reliable;
however SRS Real Estate Partners does not guarantee its completeness or accuracy.