

AVAILABLE FOR LEASE

138 & 142 COREMARK CT.
BAKERSFIELD, CA

FOR LEASE

138 & 142 COREMARK CT.



- Insulated metal industrial warehouse building with a fenced and paved yard linear Hwy 58 and Hwy 184
- Features high-capacity power
- Close proximity to a variety of amenities—restaurants, gas stations, retail, & other industrial and office users

PROPERTY HIGHLIGHTS

Total Available:	±9,200 SF	Building ¹	Buiding ²
Lot Size:	0.94 Acres	Total Available:	±3,200 SF ±6,000 SF
Power (per building):	400 Amps, 277/480 V, 3 Ph	Office/RR:	±180 SF ±900 SF
Zoning:	M-2 PD, County of Kern	Clear Height:	14' - 17' 12' - 14'
Asking Rent:	\$1.00psf/month, Industrial Gross	Loading:	(1) 14' x 12; (1) 14' x 14' (2) 14' x 12' Roll-Up Doors



FOR LEASE

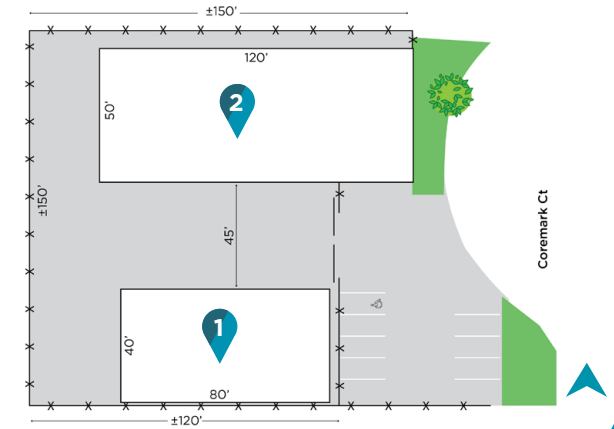
138 & 142 COREMARK CT.



FLOOR PLAN



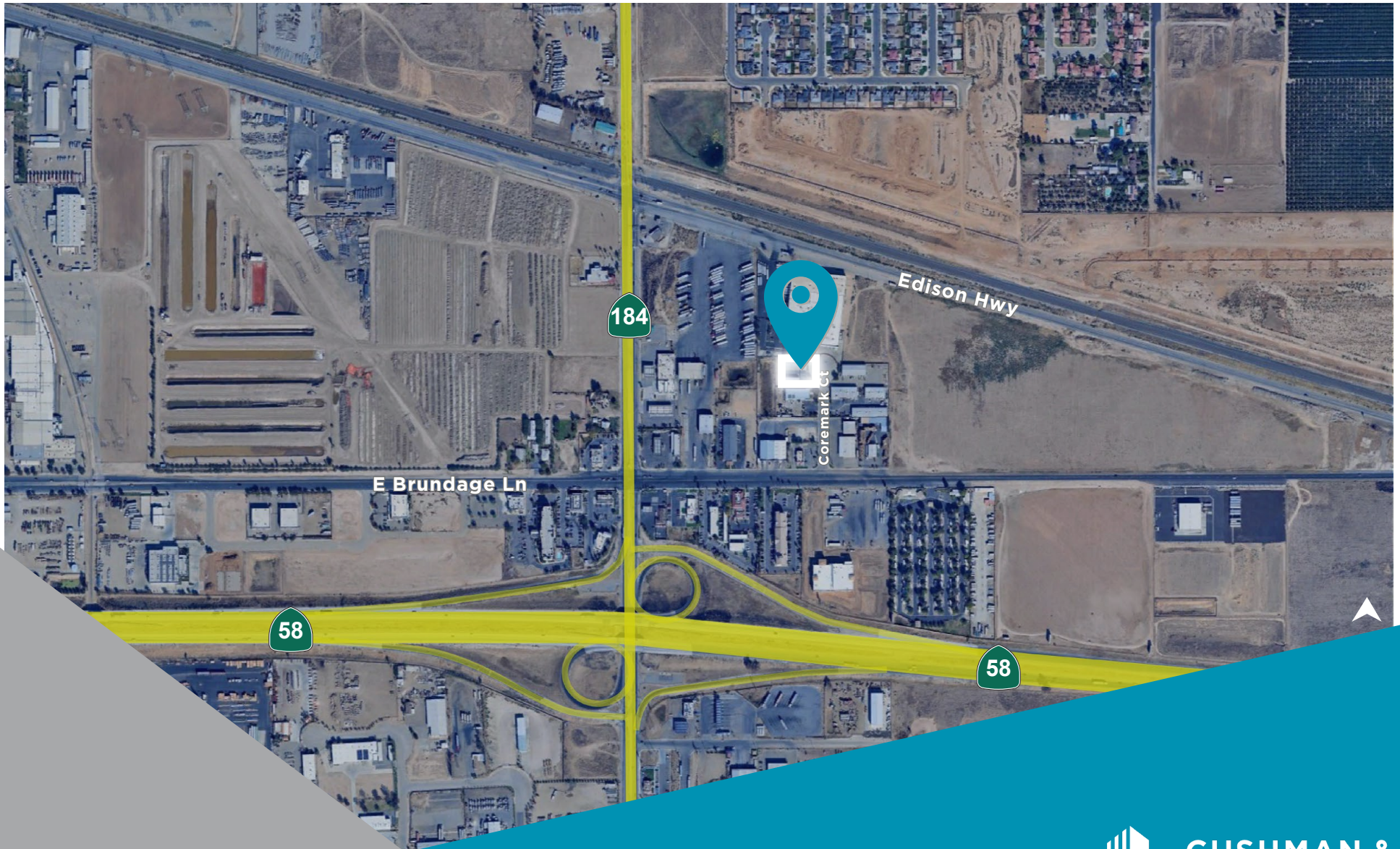
SITE PLAN



Not To Scale

FOR LEASE

138 & 142 COREMARK CT.





For more information, please contact:

Wayne Kress, SIOR

Executive Director
wayne.kress@cushwake.com
+1 661 706 5692
Lic. #00834680

Coby Vance

Senior Director
coby.vance@cushwake.com
+1 661 203 4400
Lic. #01449929

Scott Reynolds

Director
scott.reynolds@cushwake.com
+1 661 330 7616
Lic. #01382493

5060 California Ave, Suite 1000
Bakersfield, CA
PH: +1 661 327 2263
cushmanwakefield.com
Lic. #01880493

©2025 Cushman & Wakefield. All rights reserved. The information contained in this communication is strictly confidential. This information has been obtained from sources believed to be reliable but has not been verified. NO WARRANTY OR REPRESENTATION, EXPRESS OR IMPLIED, IS MADE AS TO THE CONDITION OF THE PROPERTY (OR PROPERTIES) REFERENCED HEREIN OR AS TO THE ACCURACY OR COMPLETENESS OF THE INFORMATION CONTAINED HEREIN, AND SAME IS SUBMITTED SUBJECT TO ERRORS, OMISSIONS, CHANGE OF PRICE, RENTAL OR OTHER CONDITIONS, WITHDRAWAL WITHOUT NOTICE, AND TO ANY SPECIAL LISTING CONDITIONS IMPOSED BY THE PROPERTY OWNER(S). ANY PROJECTIONS, OPINIONS OR ESTIMATES ARE SUBJECT TO UNCERTAINTY AND DO NOT SIGNIFY CURRENT OR FUTURE PROPERTY PERFORMANCE.

