



110 N. 3RD STREET

±8,770 SF STANDALONE DOWNTOWN SAN JOSE OFFICE

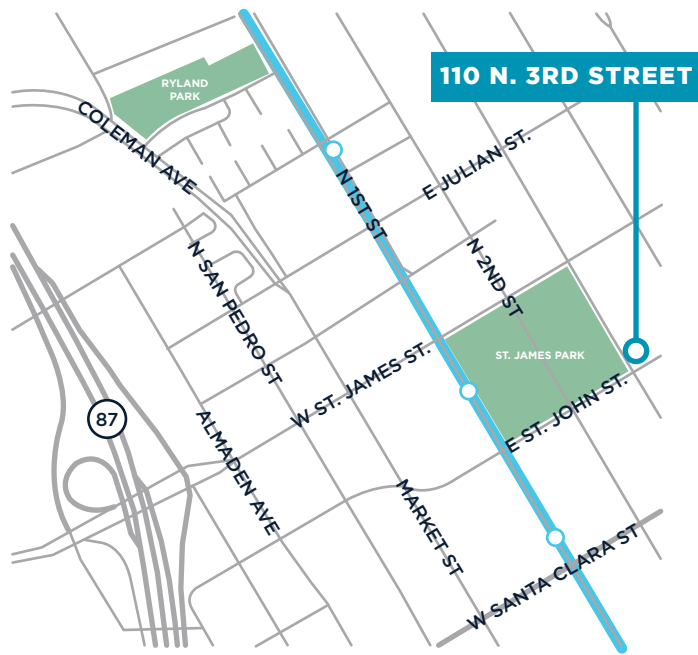
DIVISIBLE TO ±2,030 - 6,740 SF

ANDREW HSU | +1 650 686 7138 | andrew.hsu@cushwake.com | LIC #02089731



HIGHLIGHTS

- Single-story, standalone building ±8,770 SF
 - Suite 10: ±6,740 SF
 - Suite 20: ±2,030 SF
- Private surface parking lot - 26 parking stalls (2.96/1,000 SF parking ratio)
- Monument Signage
- Hard corner between N. 3rd St. and E. St. John St
- Great natural light
- Market ready interiors



 VTA LIGHT RAIL STOP



SUITE 10 LOBBY

INTERIOR PHOTOS



SUITE 10 BREAK ROOM



SUITE 10 OFFICE



SUITE 10 CONFERENCE ROOM



SUITE 10 OFFICE



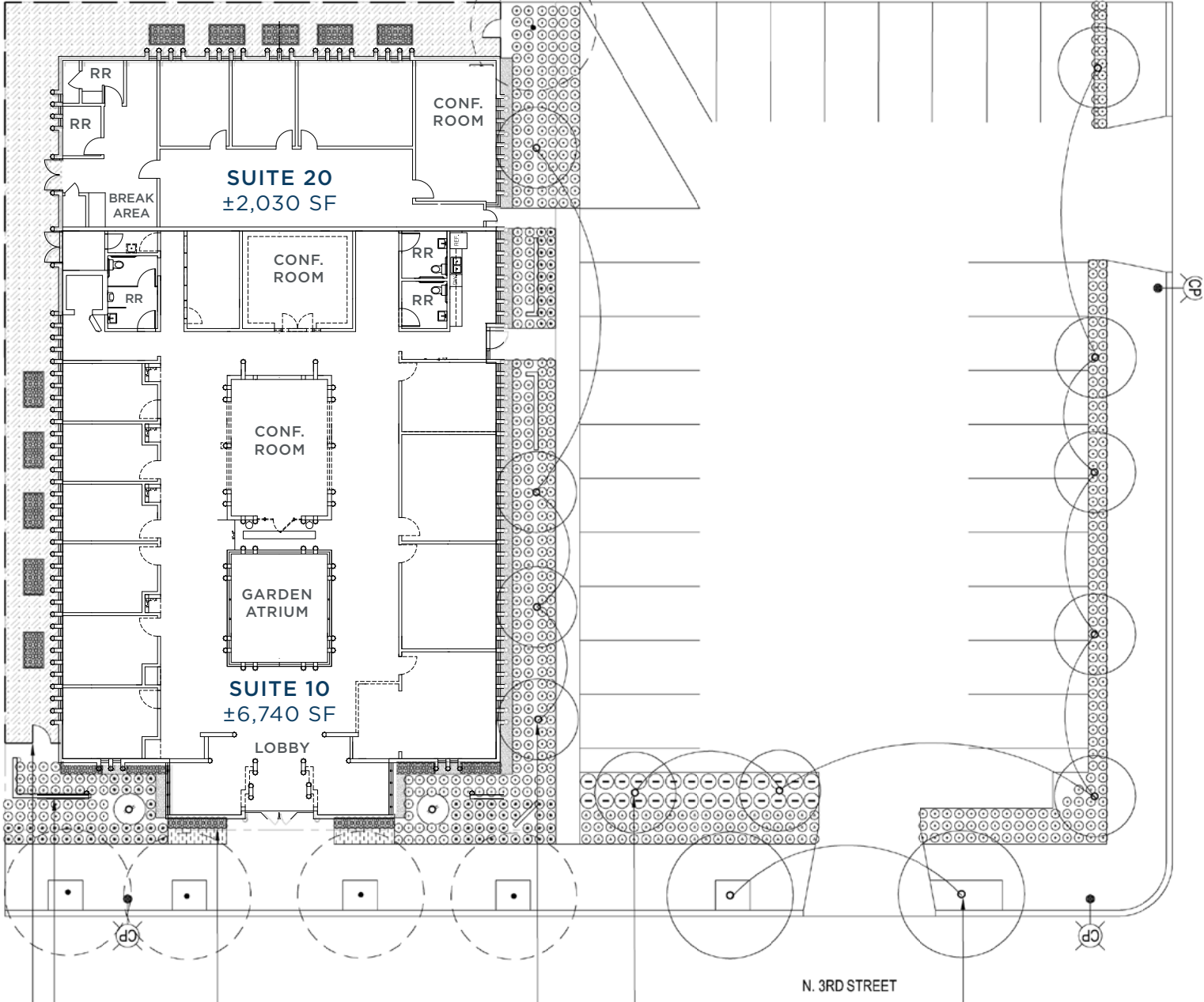
SUITE 20 OFFICE



SUITE 20 BREAK AREA

SITE PLAN & FLOOR PLANS

110 N. 3RD STREET



N. 3RD STREET

AERIAL MAP



110 N. 3RD STREET

SAN JOSE, CA | ±8,770 SF STANDALONE OFFICE

ANDREW HSU
+1 650 686 7138
andrew.hsu@cushwake.com
LIC #02089731

