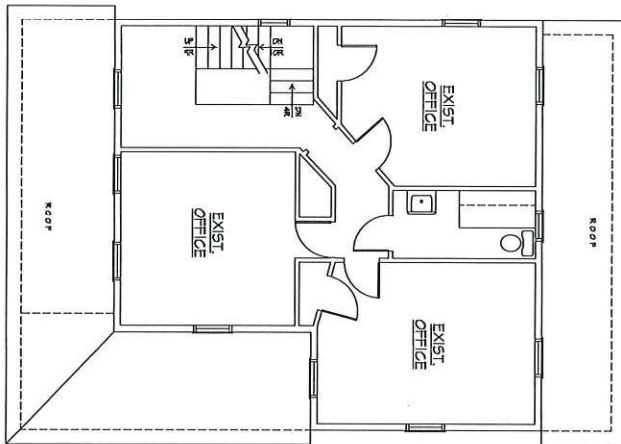
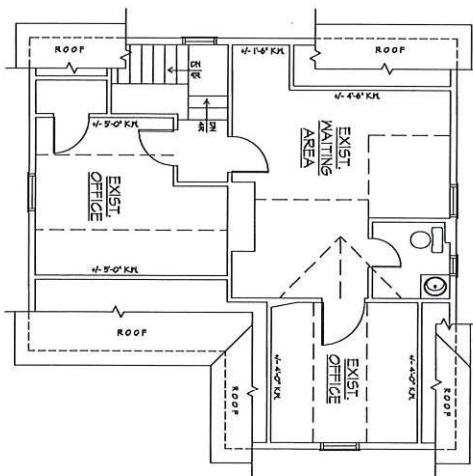


1 FIRST FLOOR PLAN
SCALE: 1/8" = 1'-0"



2 SECOND FLOOR PLAN
SCALE: 1/8" = 1'-0"



3 THIRD FLOOR PLAN
SCALE: 1/8" = 1'-0"

SQUARE FOOTAGE CALCULATIONS:

FIRST FLOOR:	1,072 SQ.FT.
SECOND FLOOR:	770 SQ.FT.
THIRD FLOOR:	518 SQ.FT.
TOTAL:	+/- 2,360 SQ.FT.

* THIRD FLOOR SQUARE FOOTAGE BASED ON EXISTING FINISH FLOOR
5'-0" CEILING AND ABOVE.

NOTE:
If field dimensions on this drawing
conflict with a photocopy, DO NOT
SCALE dimensions directly off of
the drawing. Contractor shall
verify and be responsible for all
dimensions and conditions on the
JOB and RECORD ARCHITECTURAL
PLANS shall be modified by
notations from the drafter and
coordinate prior to the start of work.

ISSUE NO.	DATE	DESCRIPTION	FOR BLDG. DEPT.
01	1-29-2019	FOR BLDG. DEPT.	

As-Built For:
49 SMITH AVE. LLC
 49 SMITH AVENUE
 MT. KISCO, NEW YORK 10549

FLOOR PLANS FOR
 SQUARE FOOTAGE
 CALCULATIONS

DATE: 1-29-2019
 DRAWING NO.: 147-11-17-02
 SCALE: 1/8" = 1'-0"
 JOB NO.: 2018101

ROAM
 ARCHITECTURE
 172-2 N. ROUTE 303, CONGERS, NY 10920
 T. 845.267.8479 www.roadmarch.com

A-1