



+/- 8,000 SF SUBLEASE AVAILABLE

# 504 PARKER DAIRY RD

DUBLIN, GA 31021

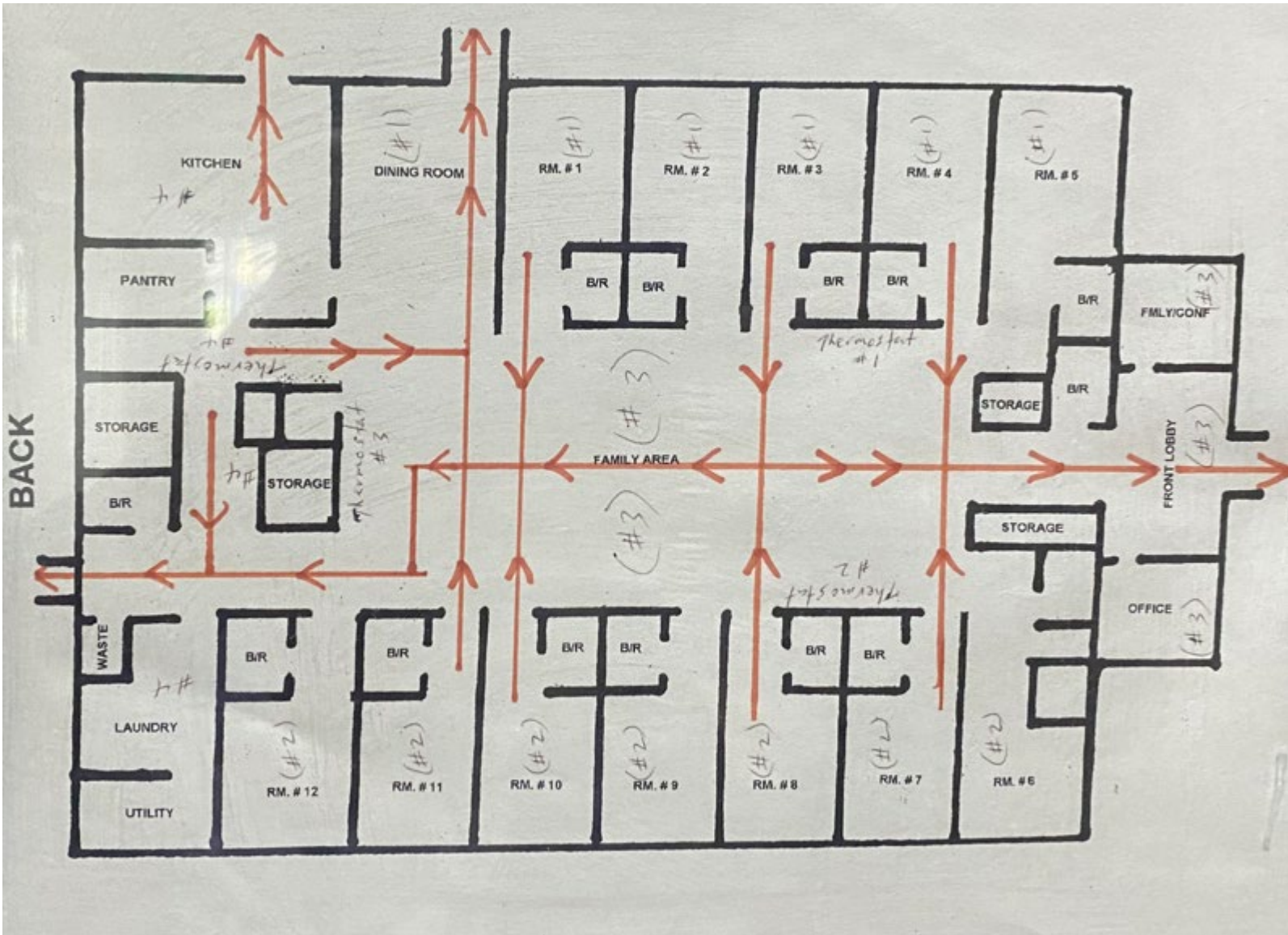


# PROPERTY OVERVIEW

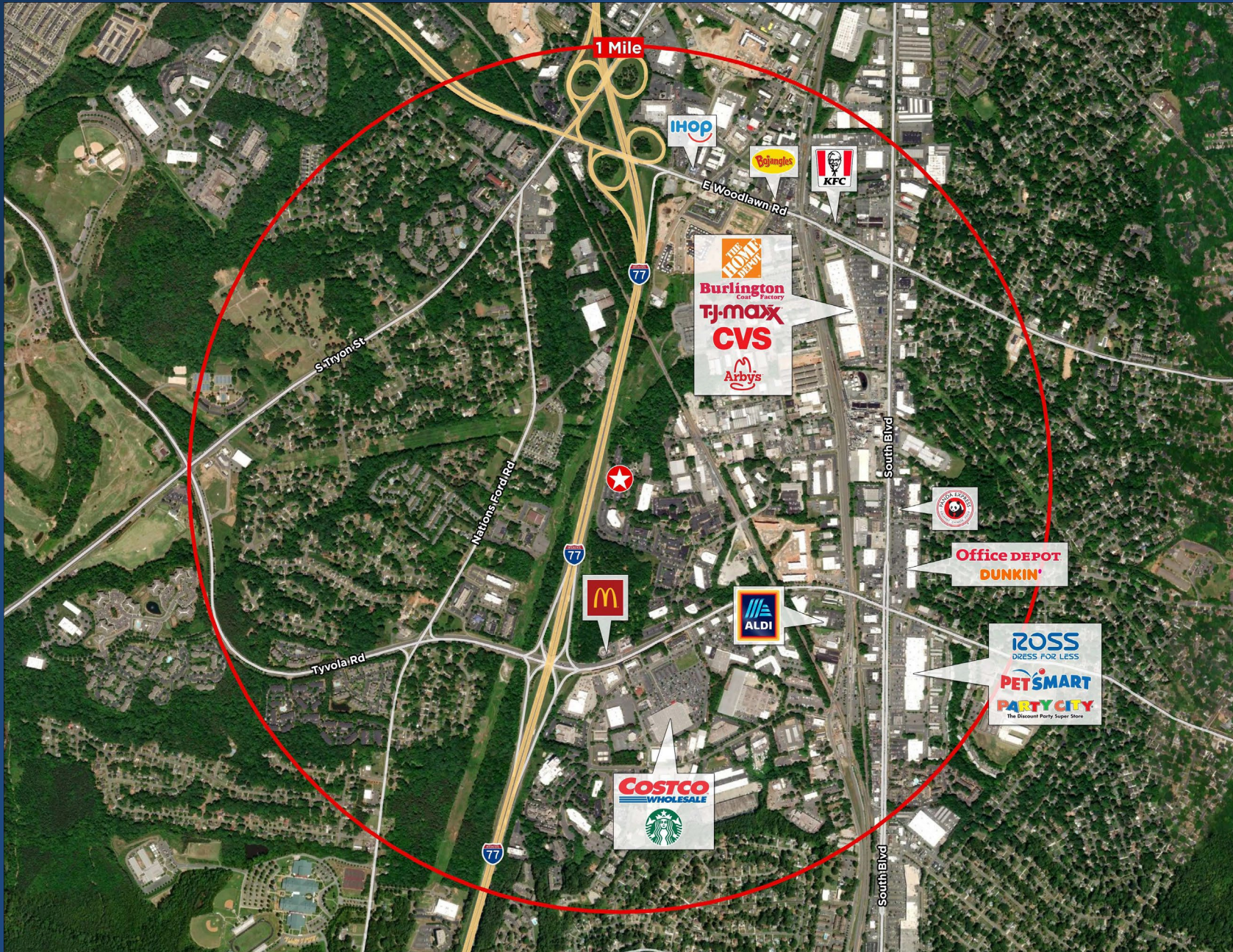
## BUILDING HIGHLIGHTS

- Asking Price: Negotiable
- +/- 8,000 RSF
- Lease Expiration: 6/22/2026
- Furniture Negotiable
- Availability: Move-In-Ready

# FLOORPLANS



# AMENITIES MAP



# PROPERTY PHOTOS





**Lan Heath**

577 Mulberry Street, Suite 1100  
Macon, GA 31201  
[lheath@fickling.com](mailto:lheath@fickling.com)  
+1 478 731 5899  
[commercial.fickling.com](http://commercial.fickling.com)



**Keith Bell, SIOR**

300 S Tryon Street, Suite 1110  
Charlotte, NC 28202  
[Keith.Bell@cushwake.com](mailto:Keith.Bell@cushwake.com)  
+1 803 603 1926  
[cushmanwakefield.com](http://cushmanwakefield.com)



**Eric Donaldson**

300 S Tryon Street, Suite 1110  
Charlotte, NC 28202  
[Eric.Donaldson@cushwake.com](mailto:Eric.Donaldson@cushwake.com)  
+1 704 887 3029  
[cushmanwakefield.com](http://cushmanwakefield.com)

©2023 Cushman & Wakefield. All rights reserved. The information contained in this communication is strictly confidential. This information has been obtained from sources believed to be reliable but has not been verified. NO WARRANTY OR REPRESENTATION, EXPRESS OR IMPLIED, IS MADE AS TO THE CONDITION OF THE PROPERTY (OR PROPERTIES) REFERENCED HEREIN OR AS TO THE ACCURACY OR COMPLETENESS OF THE INFORMATION CONTAINED HEREIN, AND SAME IS SUBMITTED SUBJECT TO ERRORS, OMISSIONS, CHANGE OF PRICE, RENTAL OR OTHER CONDITIONS, WITHDRAWAL WITHOUT NOTICE, AND TO ANY SPECIAL LISTING CONDITIONS IMPOSED BY THE PROPERTY OWNER(S). ANY PROJECTIONS, OPINIONS OR ESTIMATES ARE SUBJECT TO UNCERTAINTY AND DO NOT SIGNIFY CURRENT OR FUTURE PROPERTY PERFORMANCE.

