

# SUMMIT COMMONS

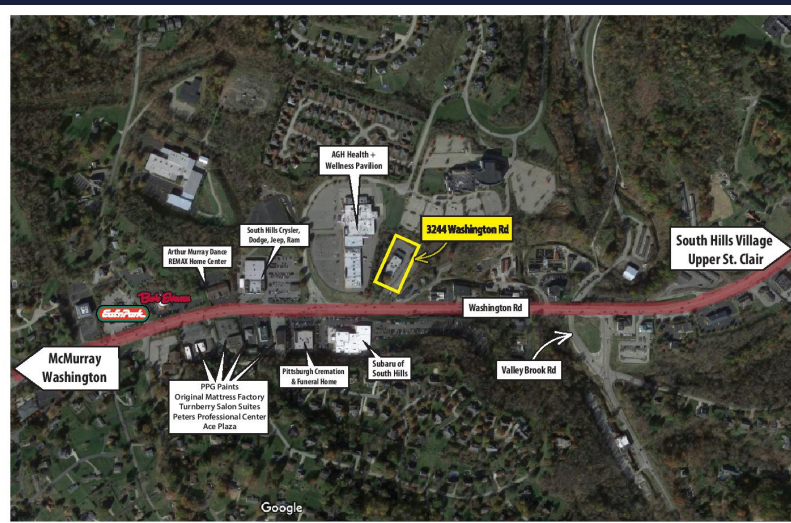
3244 WASHINGTON ROAD  
MCMURRAY, PA 15317

BUILDING SIZE 21,616 SF



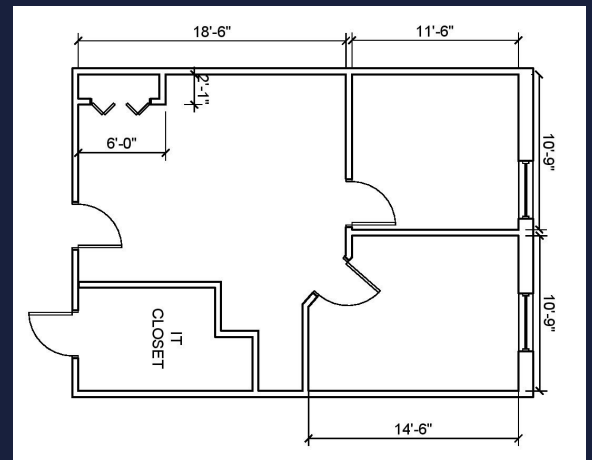
## SUITE FEATURES

- 685 RSF Office Available For Lease
- Two private offices w/ reception/waiting area
- \$18.00/SF includes utilities and cleaning



## PROPERTY HIGHLIGHTS

- Ample On-site Parking
- On-site Day Care
- Prime Peters Township location along Route 19 (Washington Road)
- New renovations to include: new carpet, paint, second look ceiling tile and new LED lighting
- Minutes away from an abundance of Shopping, Restaurants, and Retail



FOR MORE INFORMATION CONTACT- Greg Malanos- 724-942-4721