



**MEDICAL ASSET
MANAGEMENT**
MEDICAL PROPERTY SPECIALISTS



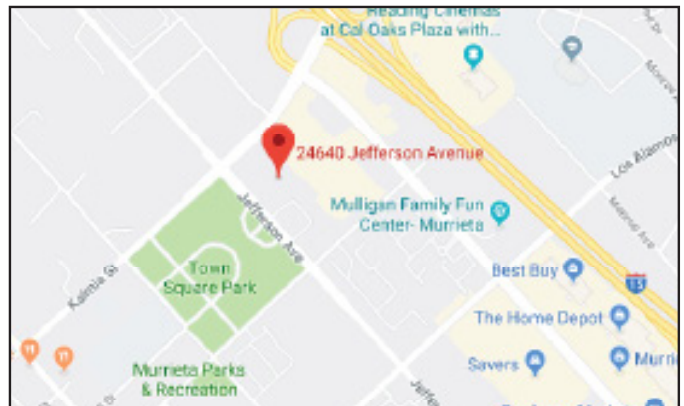
Olivewood Professional Building | 24640 Jefferson Ave. | Murrieta, CA
Medical / Office Suites For Lease

Available Suites	Sq. Ft.	Rental Rate
Suite 204	1,936 RSF	\$1.95/SF NNN
Suite 208	1,321 RSF	\$1.95/SF NNN

Term 3 to 10 years

Features

New construction, roof coating and interior paint
Part of a 4 building business park
Located in downtown Murrieta across from City Hall & Town Square Park
Walking distance to Village Walk Plaza and major shopping centers
Easy access to the 15 freeway
Building & Monument Signage Available



Contact

Brock Burnett
(818) 990-5200
brockb@medicalasset.com
DRE#: 01814211

Mitch Yankowitz
(310) 517-4861
mitchy@medicalasset.com
DRE#: 01360137

www.medicalasset.com

South Bay
201 Continental Blvd., Ste. 210
El Segundo, CA 90245

Downtown Los Angeles
1400 S. Grand Ave., Ste. 808
Los Angeles, CA 90015

San Fernando Valley
5411 Etiwanda Ave., Ste. 208
Tarzana, CA 91356

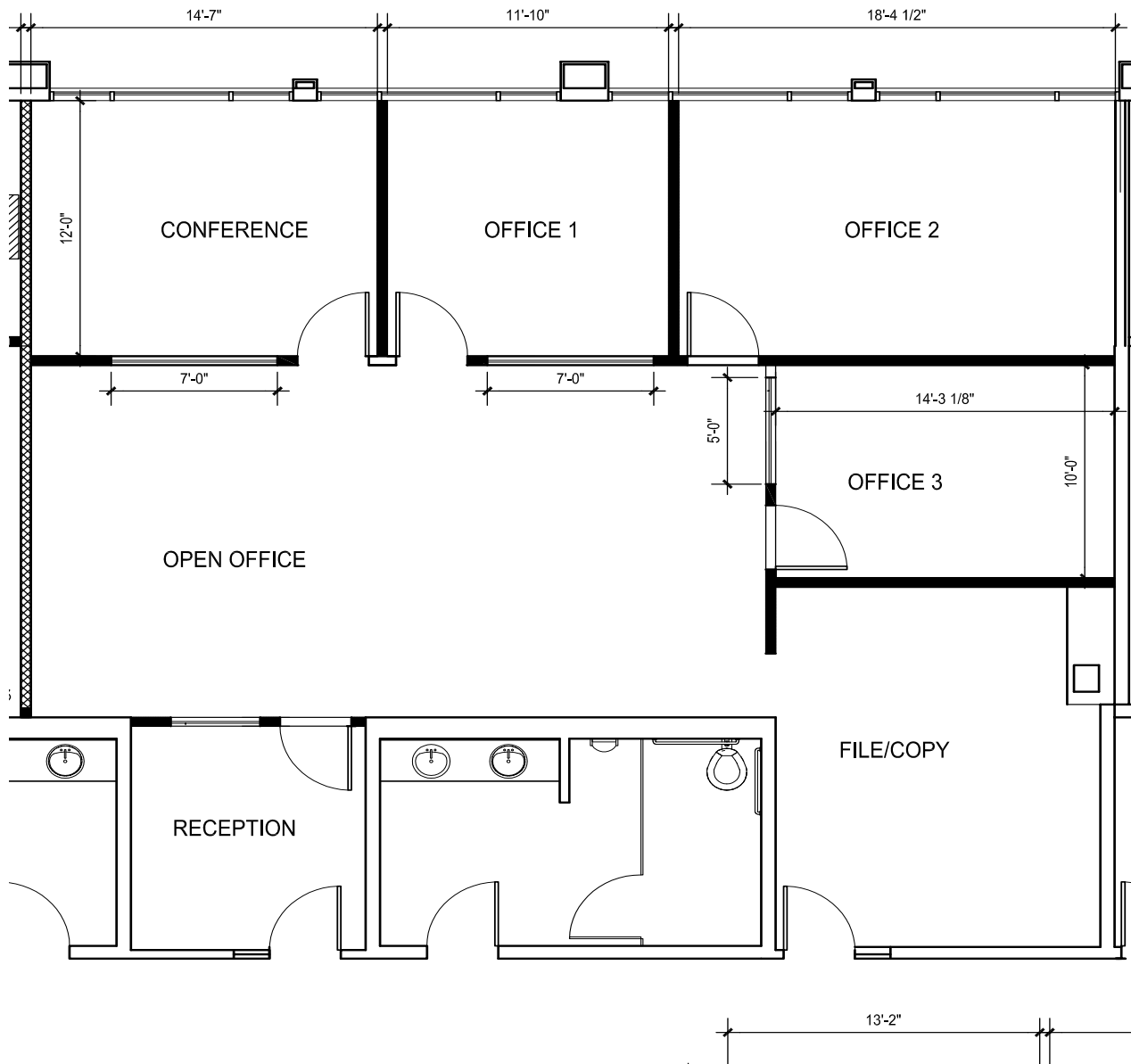
Long Beach
1040 Elm Ave., Ste. 308
Long Beach, CA 90813



**MEDICAL ASSET
MANAGEMENT**
MEDICAL PROPERTY SPECIALISTS

Olivewood Professional Building | 24640 Jefferson Ave. | Floorplans

Suite 204
1,936 RSF

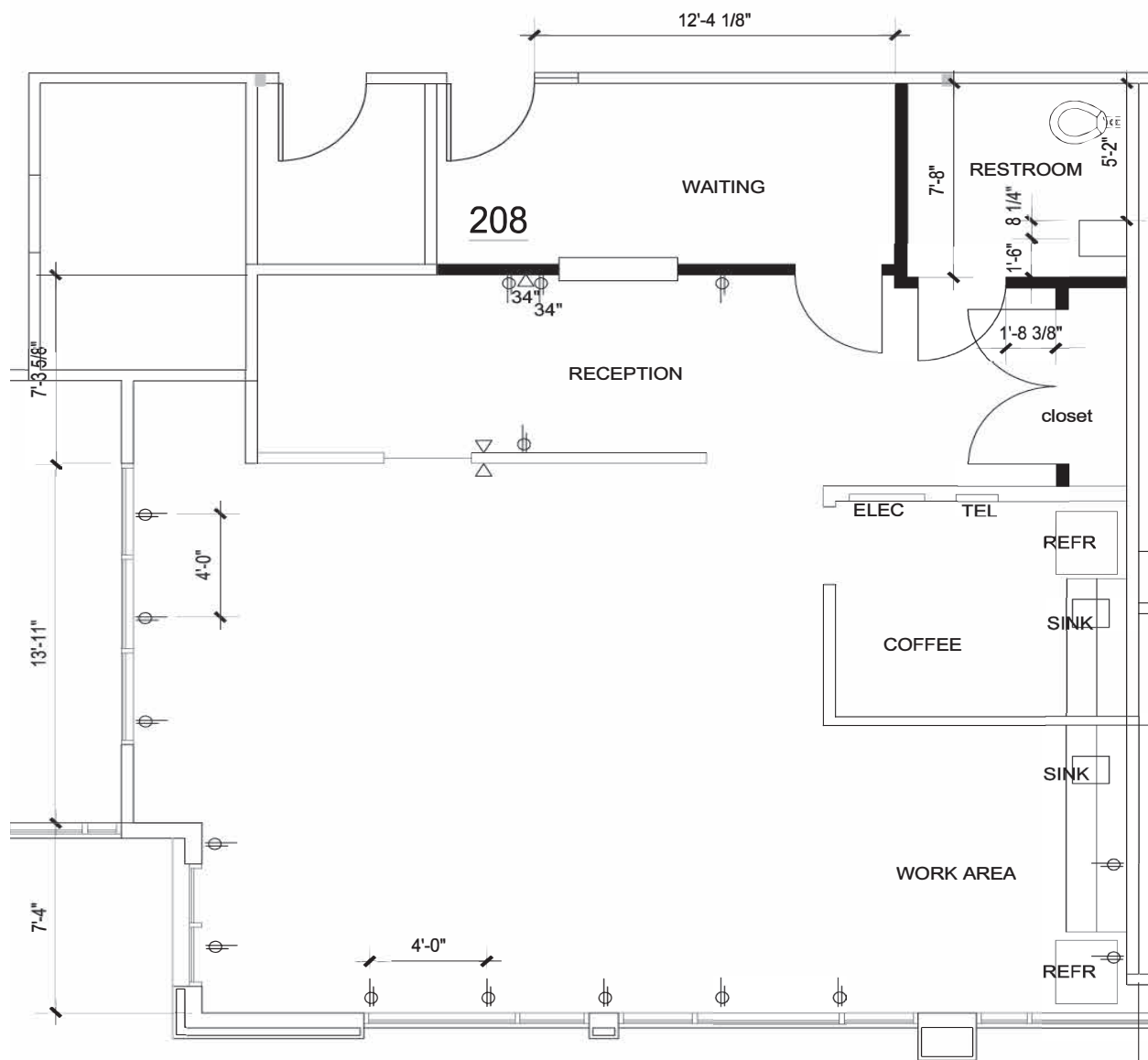




**MEDICAL ASSET
MANAGEMENT**
MEDICAL PROPERTY SPECIALISTS

Olivewood Professional Building | 24640 Jefferson Ave. | Floorplans

Suite 208
1,321 RSF



The information contained herein is deemed reliable, but cannot be guaranteed by Medical Asset Management and is subject to change.