

SPECTRUM SQUARE

7437 S MILITARY TRAIL, LAKE WORTH, FL 33463



RETAIL/OFFICE
FOR LEASE

954.966.8181
CURRENTCAPITALGROUP.COM



CURRENT CAPITAL
REAL ESTATE GROUP

SPECTRUM SQUARE

7437 S MILITARY TRAIL, LAKE WORTH, FL 33463



PROPERTY DESCRIPTION



Spectrum Square is a neighborhood retail strip center located on S Military Trail just North of the City of Boynton Beach. Spectrum Square is home to a large concentration of residential activity. This center, 7437 S Military Trail, offers 27,563 of leasable square feet. Join Picasso's Creative Workshop, PR Bakery, Vintage Hot Spot, Standing Ovation Performing Arts, Affordable Auto Repair Tire Center and other neighborhood business firms located at this center. Excellent street signage visible to busy Military Trail which is exposed to over 33,000 daily traffic!

SPECTRUM SQUARE




7437 S MILITARY TRAIL, LAKE WORTH, FL 33463

LOCATION



Spectrum Square is located near the Palm Beach Airport, Bethesda Hospital, Country Clubs, John Prince Park, West Boynton Park & Recreation Center, Palm Beach County Park Lantana Airport, Palm Beach State College & several education institutions nearby making Spectrum Square the ultimate in retail opportunity!

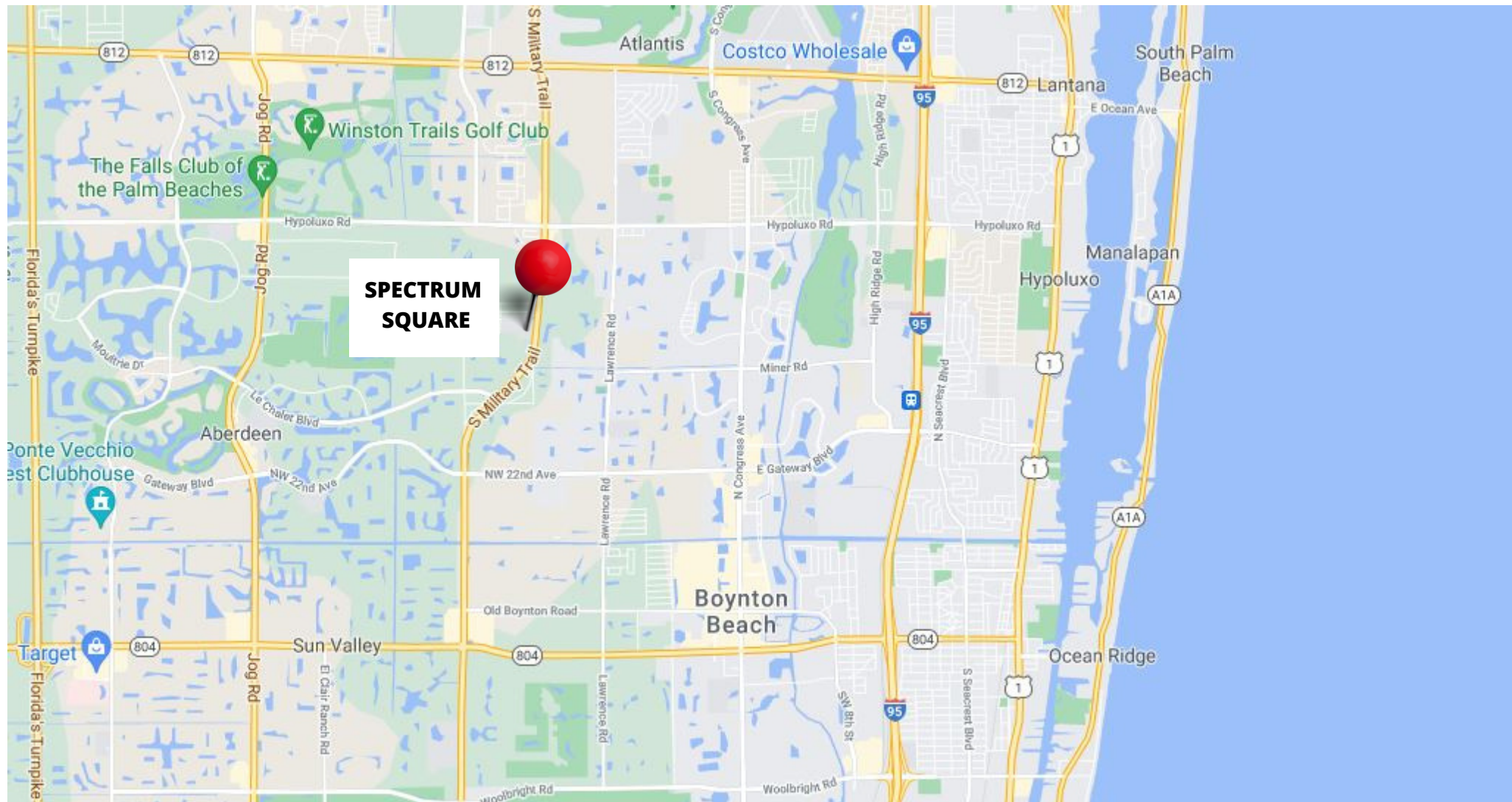
Lake Worth Beach is a coastal city of 7 square miles, located in Palm Beach County, Florida. Downtown Lake Worth Beach is the artistic soul of Palm Beach County with a historic theater and a museum, live music clubs, coffee houses, art galleries, antique malls, retail stores, and many restaurants. Lake Worth has a population of 37,946 residents within its' 6.97 square miles. The residents have a median age of 35 with a mean income of \$39,114 according to the Bureau of Economic & Business Research.

4000 HOLLYWOOD BLVD, HOLLYWOOD FL  SUITE 765-S  954.966.8181  CURRENTCAPITALGROUP.COM

SPECTRUM SQUARE

7437 S MILITARY TRAIL, LAKE WORTH, FL 33463

LOCATION



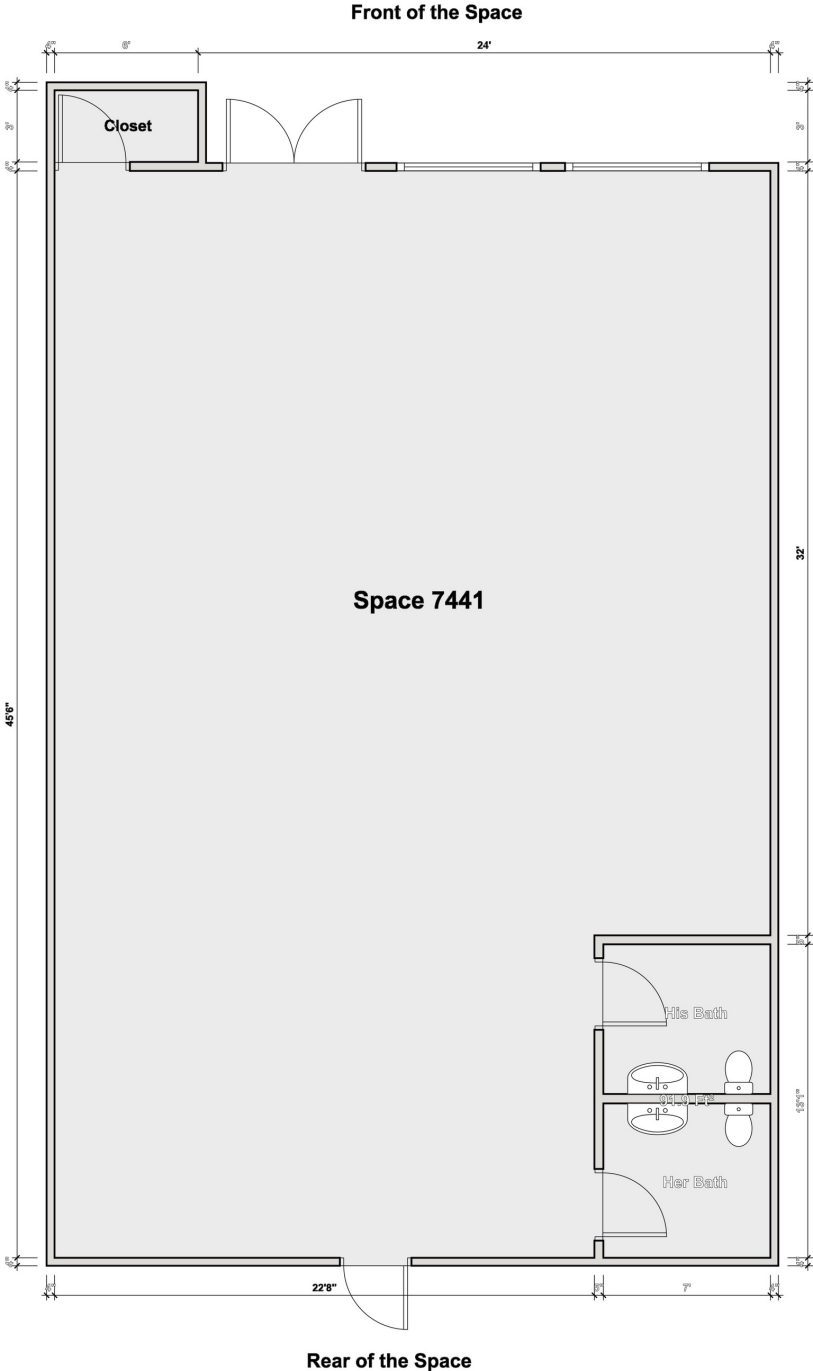
4000 HOLLYWOOD BLVD, HOLLYWOOD FL ▲ SUITE 765-S ▲ 954.966.8181 ▲ CURRENTCAPITALGROUP.COM

UNIT 7441 - FLOORPLAN

VACANT

UNIT(S)	SQ.FT.	MARKET RATE
7441.....	1,600 SF	\$3,361.33/month

Lease Type: NNN
Lease Term: Negotiable



• ALL MEASUREMENTS DISPLAYED ARE APPROXIMATE.

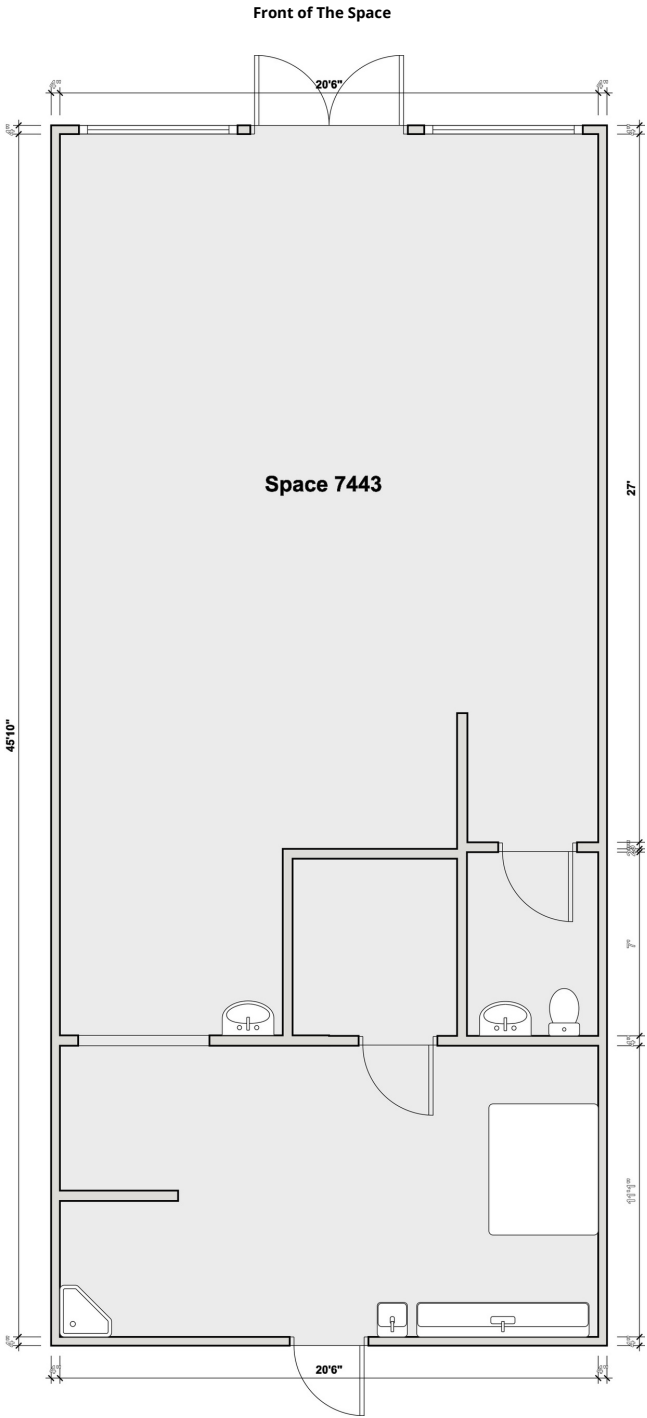
All images used are for illustrative purposes only and are intended to convey the concept and vision for the properties. They are for guidance only, may change as work progresses and do not necessarily represent a true and accurate depiction of the finished product and specification may vary. Floor plans are intended to give a general indication of the proposed layout only. All images and dimensions are not intended to form part any contract or warranty.

UNIT 7443 - FLOORPLAN

VACANT

UNIT(S)	SQ.FT.	MARKET RATE
7443.....	1,500 SF	\$3,776.25/month

Lease Type: NNN
 Lease Term: Negotiable



• ALL MEASUREMENTS DISPLAYED ARE APPROXIMATE.

All images used are for illustrative purposes only and are intended to convey the concept and vision for the properties. They are for guidance only, may change as work progresses and do not necessarily represent a true and accurate depiction of the finished product and specification may vary. Floor plans are intended to give a general indication of the proposed layout only. All images and dimensions are not intended to form part any contract or warranty.



© 2021 Current Capital Group Realty Inc. All rights reserved. This information has been obtained from sources believed reliable, but has not been verified for accuracy or completeness. You should conduct a careful, independent investigation of the property and verify all information. Any reliance on this information is solely at your own risk. Current Capital Group Real Estate and Current Capital Group Real Estate logo are service marks of Current Capital Group Real Estate/Current Capital Management. All other marks displayed on this document are the property of their respective owners, and the use of such logos does not imply any affiliation with or endorsement of Current Capital Group Real Estate. Photos herein are the property of their respective owners. Use of these images without the express written consent of the owner is prohibited.

All images and dimensions are not intended to form part any contract or warranty.

RETAIL/OFFICE
FOR LEASE

954.966.8181