

KARBANK

REAL ESTATE COMPANY

INDUSTRIAL | OFFICE | COMMERCIAL
BROKERAGE & DEVELOPMENT
ESTABLISHED 1950

115,400 SF
FOR SALE



10800 AMBASSADOR DRIVE KANSAS CITY, MO OFFICE AND WAREHOUSE BUILDING

FEATURES

- 8,000 +/- SF office area
- 50' x 50' column spacing
- 9 dock-high doors
- 359 parking spaces
- 28' x 30' clear ceiling height
- Multiple production areas
- 4,000 amps, 3-phase power
- Great access and visibility to I-29

FOR SALE

\$11,950,000

For more information
please contact

JOHN DELZER
jd@karbank.com

PAUL FOGEL, SIOR
pf@karbank.com

THE BARNEY BUILDING
2000 SHAWNEE MISSION PARKWAY
SUITE 400
MISSION WOODS, KS 66205

816.221.4488
816.221.4494

KARBANK.COM

Information furnished regarding property is from sources deemed reliable but no warranty or representation is made as to the accuracy thereof and same is submitted subject to errors, omissions, prior sale or lease or withdrawal without notice.

KARBANK

REAL ESTATE COMPANY

INDUSTRIAL | OFFICE | COMMERCIAL
BROKERAGE & DEVELOPMENT
ESTABLISHED 1950

115,400 SF
FOR SALE



10800 AMBASSADOR DRIVE KANSAS CITY, MO OFFICE AND WAREHOUSE BUILDING

FEATURES

- 8,000 +/- SF office area
- 50' x 50' column spacing
- 9 dock-high doors
- 359 parking spaces
- 28' x 30' clear ceiling height
- Multiple production areas
- 4,000 amps, 3-phase power
- Great access and visibility to I-29

FOR SALE

\$11,950,000

For more information
please contact

JOHN DELZER
jd@karbank.com

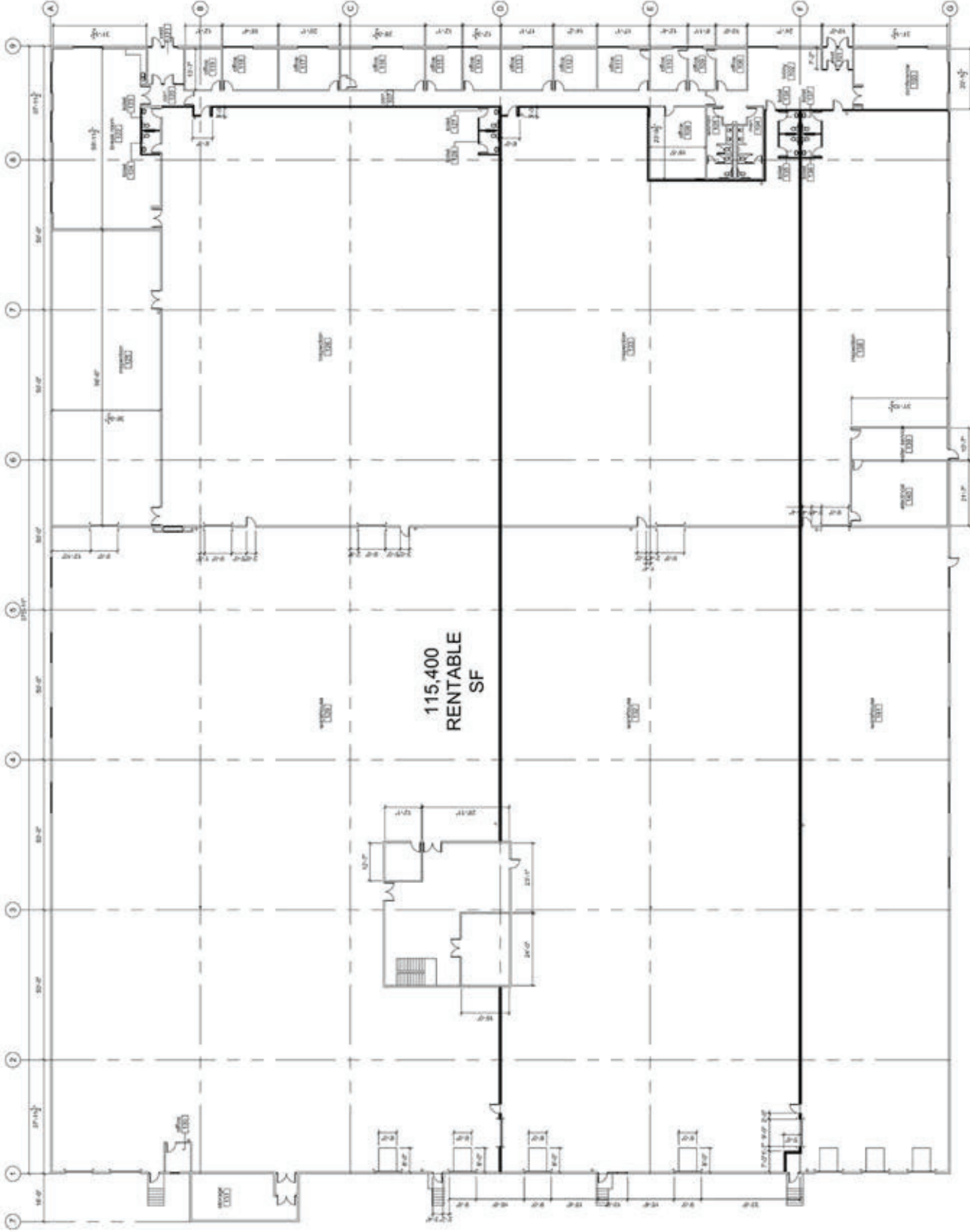
PAUL FOGEL, SIOR
pf@karbank.com

THE BARNEY BUILDING
2000 SHAWNEE MISSION PARKWAY
SUITE 400
MISSION WOODS, KS 66205

816.221.4488
816.221.4494

KARBANK.COM

Information furnished regarding property is from sources deemed reliable but no warranty or representation is made as to the accuracy thereof and same is submitted subject to errors, omissions, prior sale or lease or withdrawal without notice.



115,400
RENTABLE
SF



TOTAL SF	DATE
115,400 SF	2-7-2023
TOTAL OFFICE SF	SCALE

ADDRESS	PLAN TYPE
10800 N. Ambassador Drive Kansas City, MO	Floor Plan

KARBANK
REAL ESTATE COMPANY

THE BARNEY BUILDING
2000 SHAWNEE MISSION PARKWAY | SUITE 400
MISSION WOODS, KANSAS 66205
KARBANK.COM