



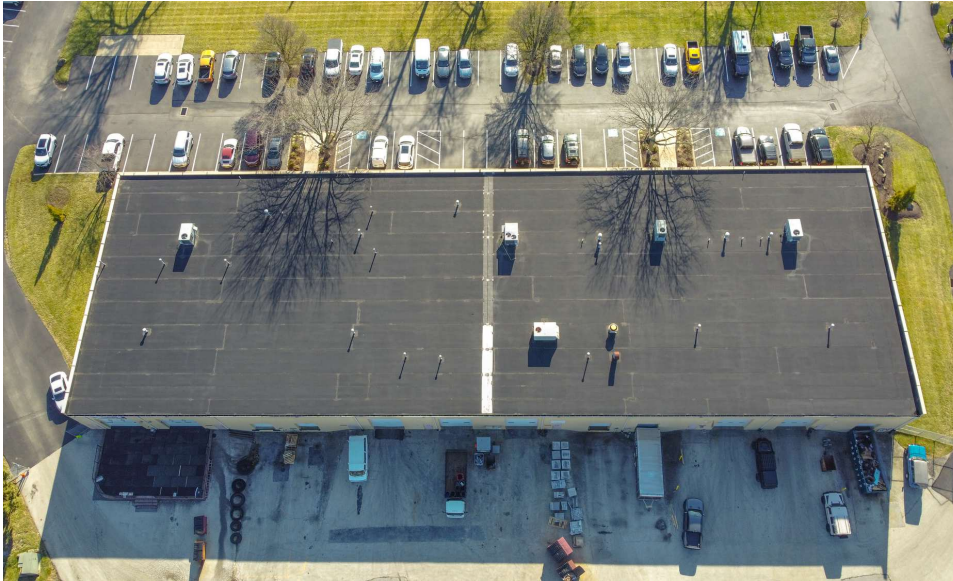
**SWOPE  
LEES**  
COMMERCIAL  
REAL ESTATE

**917 OLD FERN HILL ROAD  
INDUSTRIAL FLEX UNIT FOR LEASE**

**917 OLD FERN HILL RD WEST CHESTER, PA 19380**

610.429.0200  
swopelees.com





## PROPERTY DESCRIPTION

Facing Route 202, this spacious flex space offers excellent visibility from the major thoroughfare and convenient access to West Chester Borough. With ample outdoor parking, yard storage capabilities, and high ceilings, the warehouse accommodates a variety of uses. Situated in the Industrial District of West Goshen Township, the building is well-maintained and managed locally.

## PROPERTY HIGHLIGHTS

- 1,666 SF Office and 5,000 SF Warehouse/Storage
- 1 Drive-In and 1 Dock
- 18' Clear in Warehouse
- Ample Parking and Available Outdoor Storage
- Visibility from 202 with Signage

## OFFERING SUMMARY

Lease Rate:	\$13.00 SF/yr (NNN)
Number of Units:	1
Available SF:	6,600 SF
Building Size:	40,200 SF

DEMOGRAPHICS	1 MILE	3 MILES	5 MILES
Total Households	1,925	26,942	47,214
Total Population	4,561	69,746	125,551
Average HH Income	\$147,670	\$156,593	\$171,843



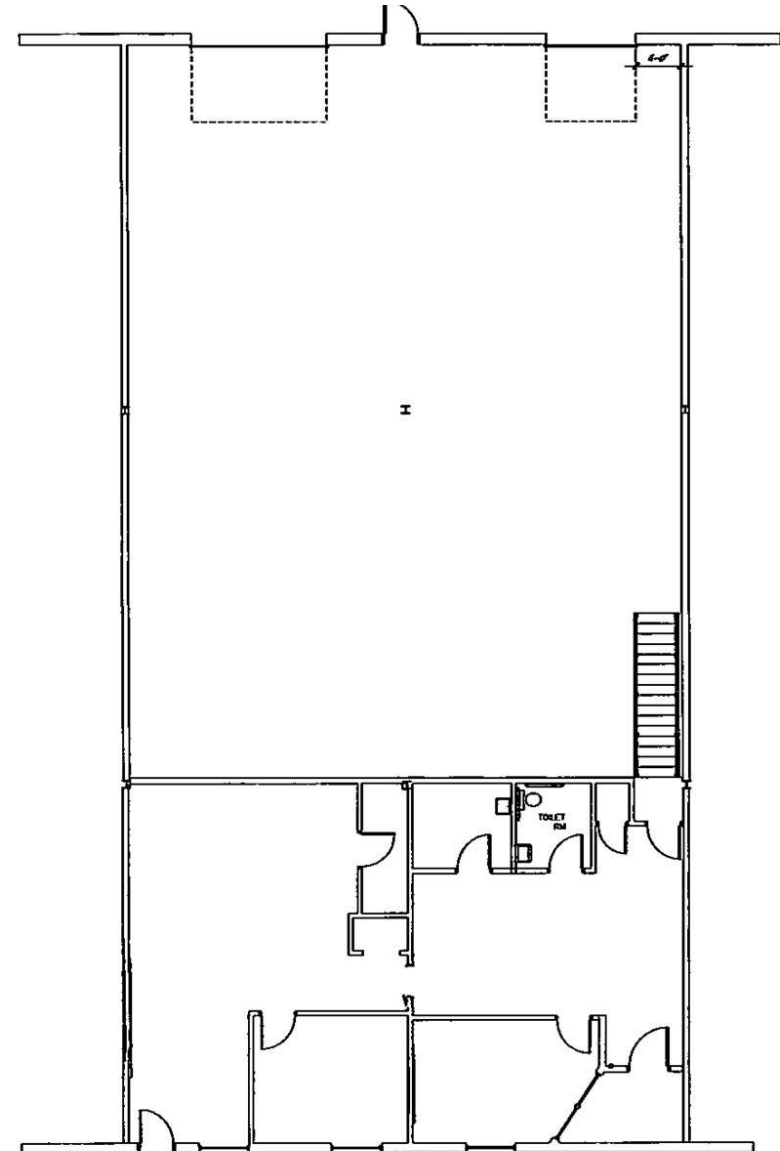
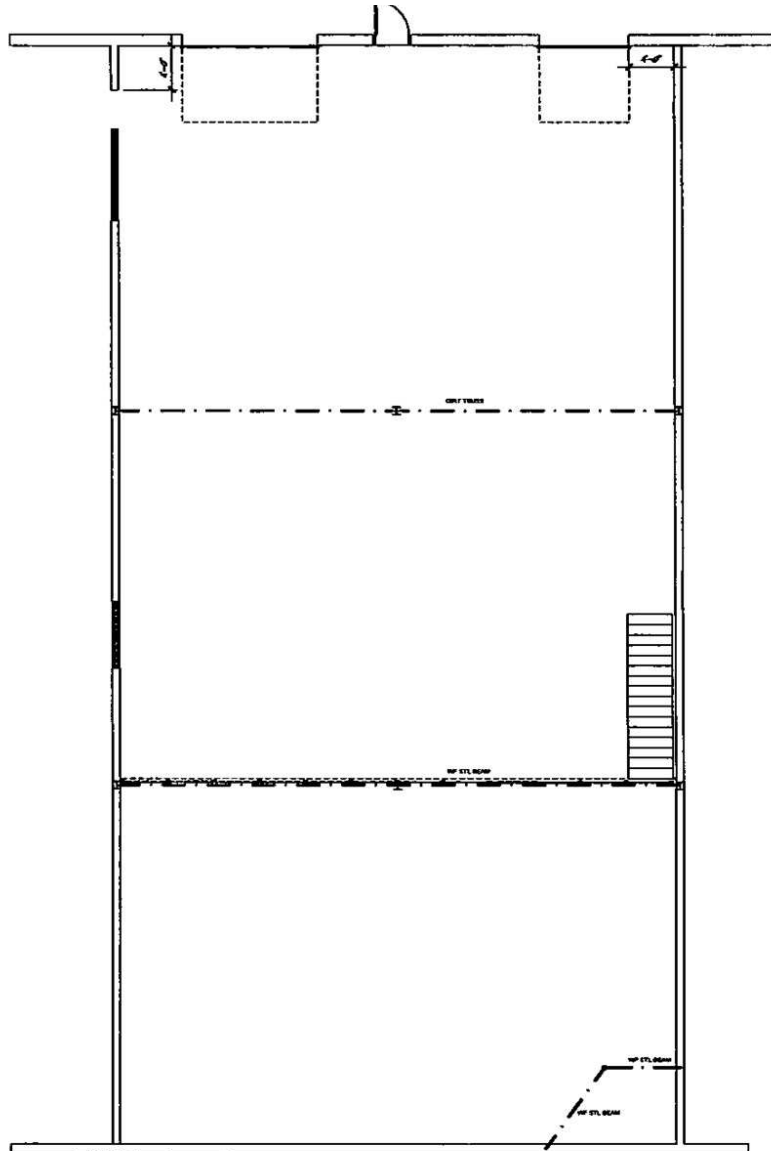


**917 OLD FERN HILL ROAD**  
917 Old Fern Hill Rd  
West Chester, PA 19380

**NICOLE LYDDANE**  
nicole@swopelees.com  
610.429.0200

**JIM LEES**  
jim@swopelees.com  
610.429.0200 x103





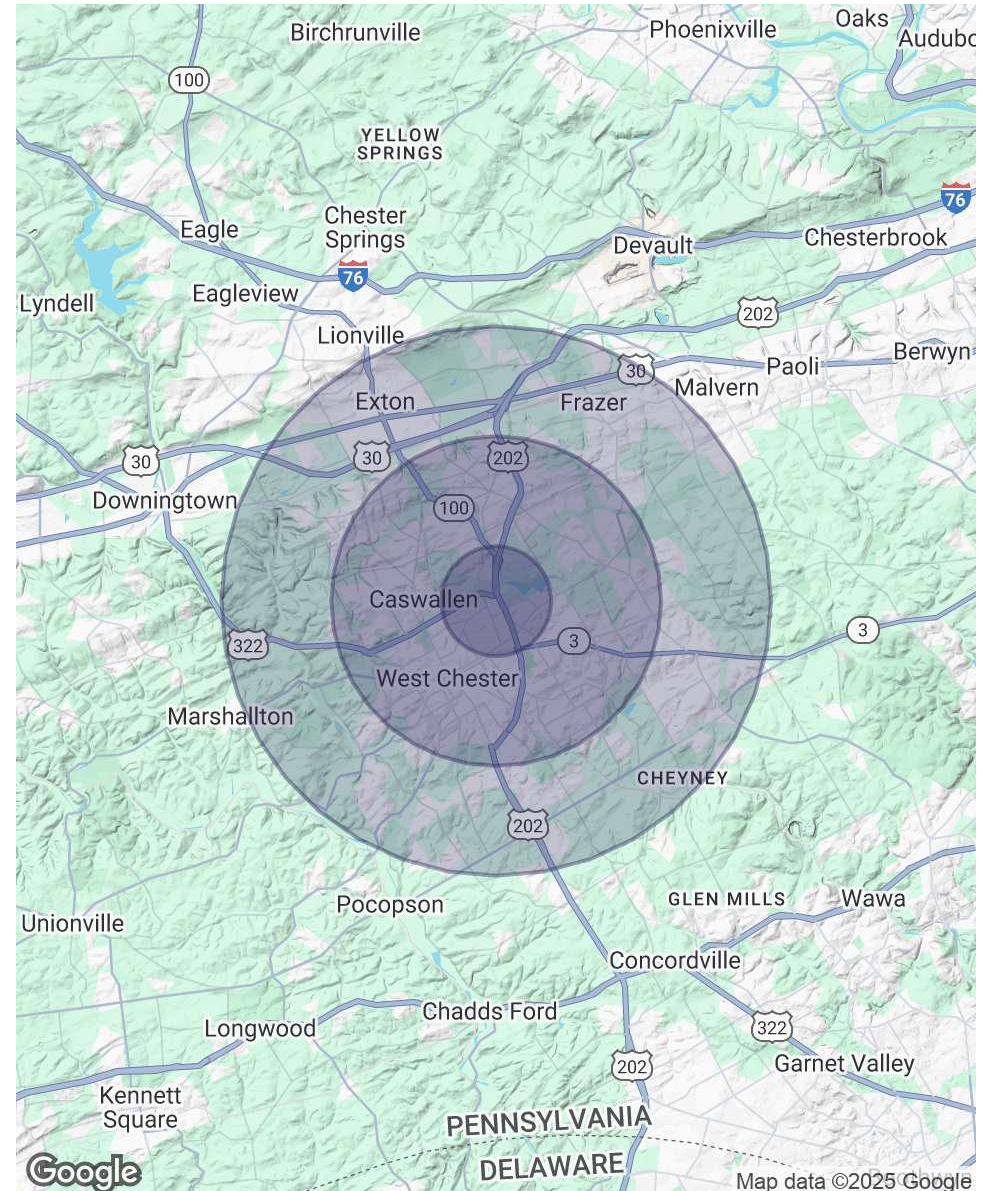


POPULATION	1 MILE	3 MILES	5 MILES
Total Population	4,561	69,746	125,551
Average Age	43	40	41
Average Age (Male)	42	39	40
Average Age (Female)	44	41	42

HOUSEHOLDS & INCOME	1 MILE	3 MILES	5 MILES
Total Households	1,925	26,942	47,214
# of Persons per HH	2.4	2.6	2.7
Average HH Income	\$147,670	\$156,593	\$171,843
Average House Value	\$594,571	\$552,018	\$584,356

*Demographics data derived from AlphaMap*

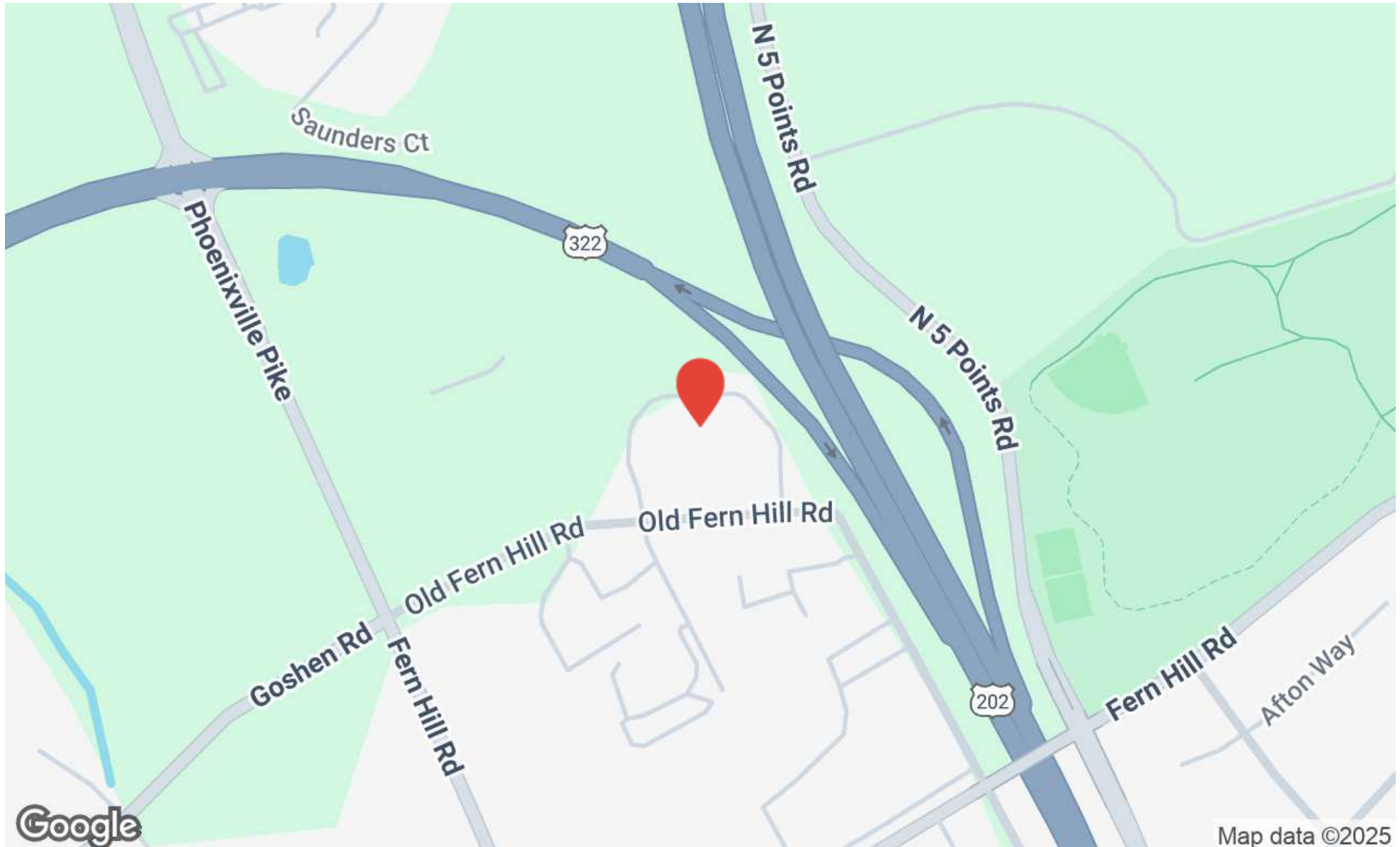




**917 OLD FERN HILL ROAD**  
917 Old Fern Hill Rd  
West Chester, PA 19380

**NICOLE LYDDANE**  
nicole@swopelees.com  
610.429.0200

**JIM LEES**  
jim@swopelees.com  
610.429.0200 x103





**917 OLD FERN HILL ROAD**  
917 Old Fern Hill Rd  
West Chester, PA 19380

**NICOLE LYDDANE**  
nicole@swopelees.com  
610.429.0200

**JIM LEES**  
jim@swopelees.com  
610.429.0200 x103



**NICOLE LYDDANE**

**VP, Sales and Leasing**

nicole@swopelees.com  
Direct: **610.429.0200** | Cell: **610.457.3561**

PA #RS329276

**PROFESSIONAL BACKGROUND**

Nicky lives in Phoenixville with her two Labs, Remy and Pierce. She enjoys hiking, traveling, camping, spending time with family and friends, sits on several non-profit committees and volunteers weekly at a therapeutic horse farm in Malvern. Nicole has been with Swope Lees since 2015 and prides herself on providing unparalleled customer service, fabulous communication, and looks out for the needs of her clients.

**EDUCATION**

PA Real Estate License  
Licensed 2015 – Present

University of Delaware  
Bachelor of Applied Science (B.A.Sc.), Hotel, Motel, and Restaurant Management  
2001 – 2005

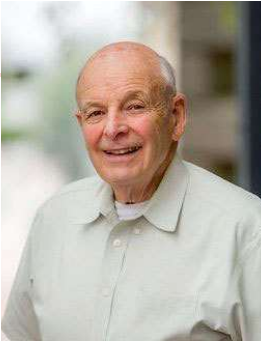
**Swope Lees Commercial Real Estate**  
208 East Market Street  
West Chester, PA 19382  
610.429.0200



**917 OLD FERN HILL ROAD**  
917 Old Fern Hill Rd  
West Chester, PA 19380

**NICOLE LYDDANE**  
nicole@swopelees.com  
610.429.0200

**JIM LEES**  
jim@swopelees.com  
610.429.0200 x103



**JIM LEES**  
jim@swopelees.com  
Direct: 610.429.0200 x103 | Cell: 610.420.6618

**Swope Lees Commercial Real Estate**  
208 East Market Street  
West Chester, PA 19382  
610.429.0200