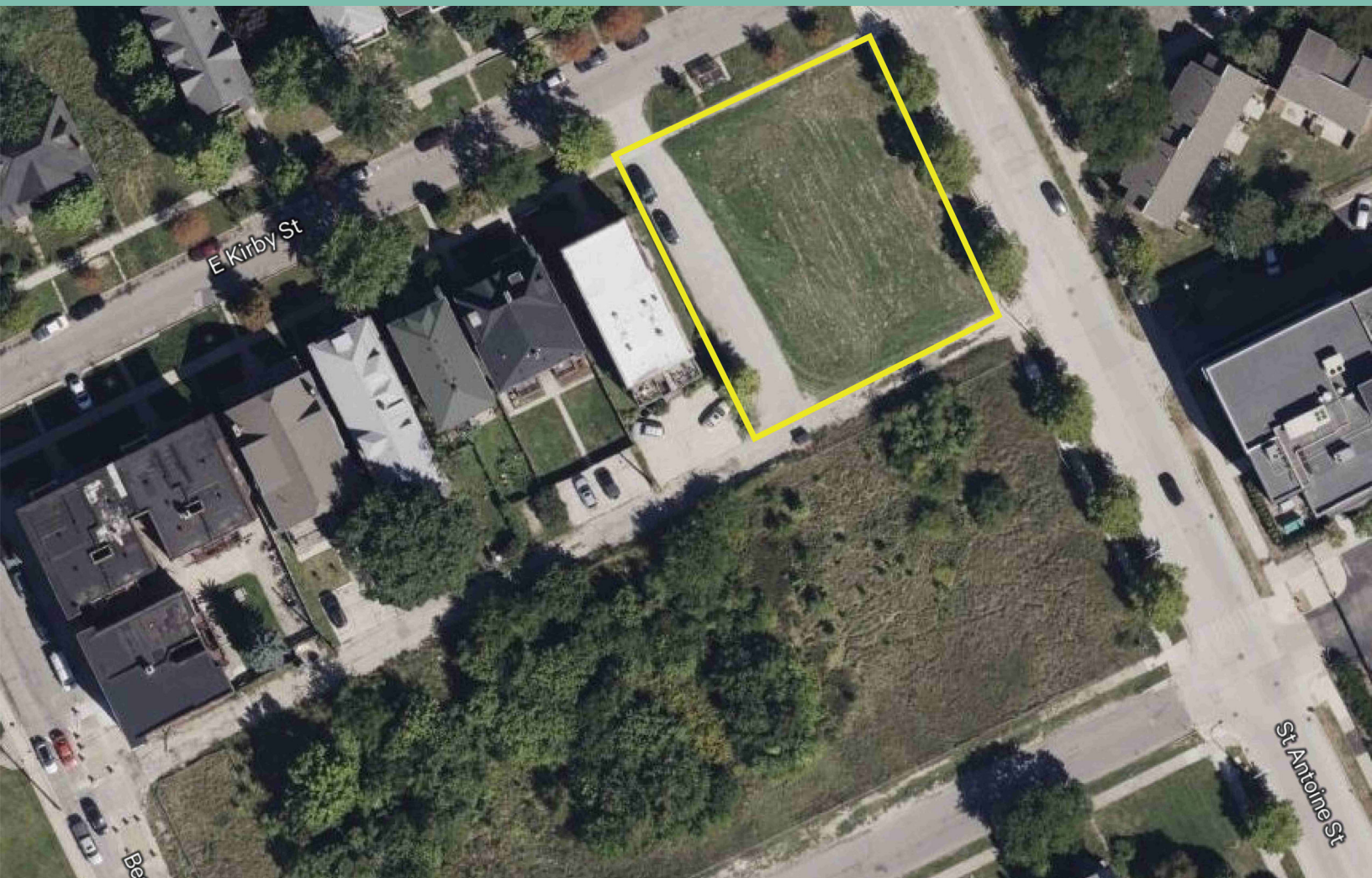


570 & 580 E Kirby

Detroit, MI

+/- 0.39 Acre Development Opportunity In Midtown

TBD



Property Features



570 E Kirby

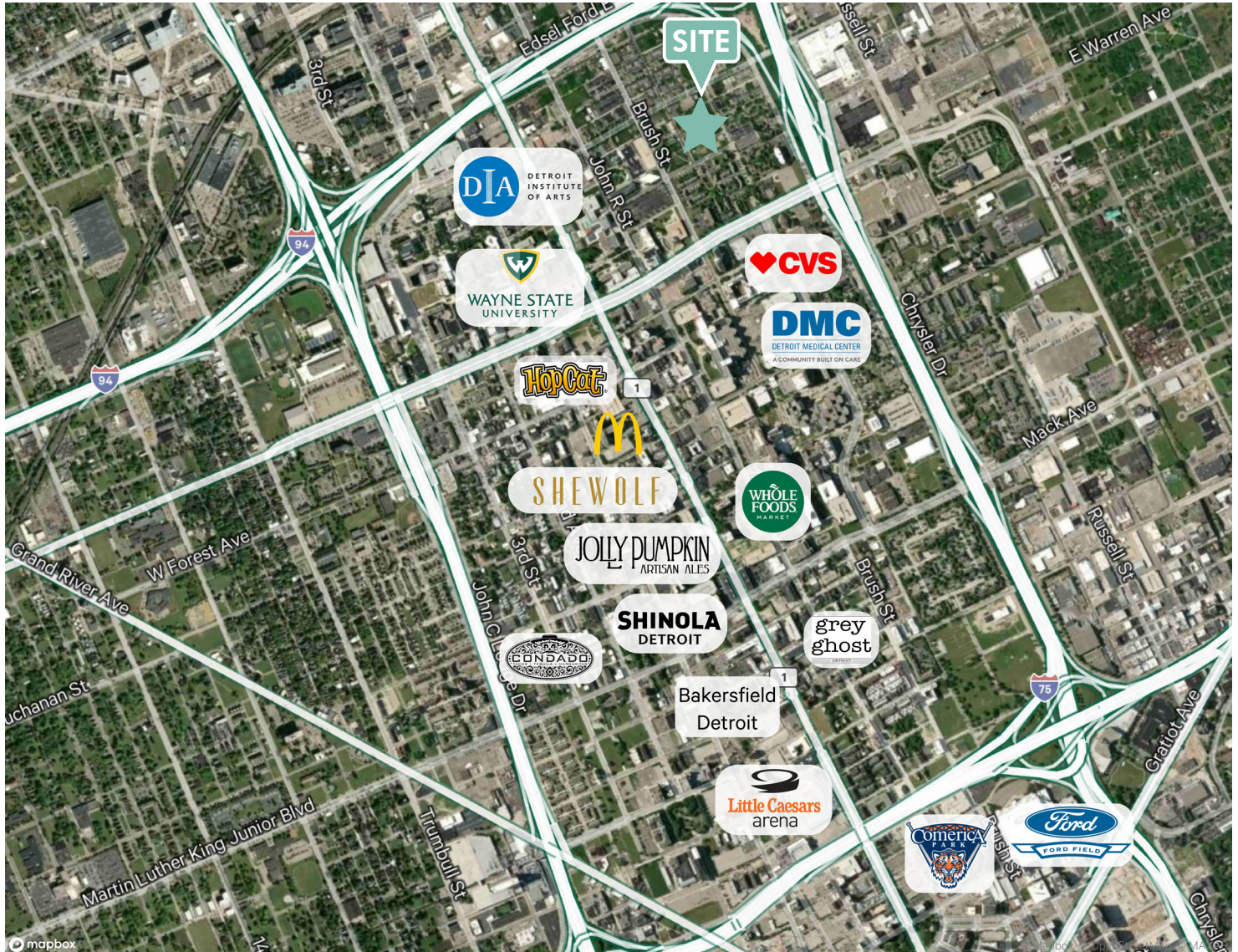
580 E Kirby

Acreage	0.19 Acres	Acreage	0.20 Acres
Dimensions Depth x Frontage (ft)	135.09 x 60	Dimensions Depth x Frontage (ft)	135.09 x 64
Parcel ID	03-001513	Parcel ID	03-00-151-20-02L
Zoning	<ul style="list-style-type: none">• R3 Classification is a low-density multi-family district.• Town and terrace house development, courts, and garden apartments.• Among others, uses permitted by right include single and two-family dwellings, town houses, multi-family dwellings, and community facilities necessary to serve a residential district.		
Demographics	Daytime workers in 1 Mile radius: 39,283 Students at WSU: 24,168 Students at CCS: 1,150 Employees at Detroit Medical Center: ~ 12,000		
Additional Info	<ul style="list-style-type: none">• Located in Midtown near Detroit landmarks such as Wayne State University, Detroit Institute of Arts, The Detroit Public Library, Detroit Historical Museum, Charles H. Wright Museum of African American History, and many more.• Walkable to College of Creative Studies and DMC Medical Center.		
Pricing	Call For Pricing		

570 & 580 E Kirby
Detroit, MI

For Sale

Landmarks & Businesses



Contact Us

Edward Wujek

Vice Chairman

+1 248 351 2005

edward.wujek@cbre.com

Kelly Cubbin

Vice President

+1 248 936 6852

kelly.cubbin@cbre.com

© 2025 CBRE, Inc. All rights reserved. This information has been obtained from sources believed reliable, but has not been verified for accuracy or completeness. You should conduct a careful, independent investigation of the property and verify all information. Any reliance on this information is solely at your own risk. CBRE and the CBRE logo are service marks of CBRE, Inc. All other marks displayed on this document are the property of their respective owners, and the use of such logos does not imply any affiliation with or endorsement of CBRE. Photos herein are the property of their respective owners. Use of these images without the express written consent of the owner is prohibited.

www.cbre.com/detroit

CBRE