

FOR LEASE
2900 W ORANGE AVENUE
APOPKA, FL 32703



PROPERTY DESCRIPTION

BUILDING SF:	35,500 SF
BUILDING DEPTH:	85' -100'
COLUMN SPACING:	30'W X 50'D
CLEAR HEIGHT:	15'10" to 22'3"
LOADING:	Rear-Load
ZONING:	I-1, City of Apopka

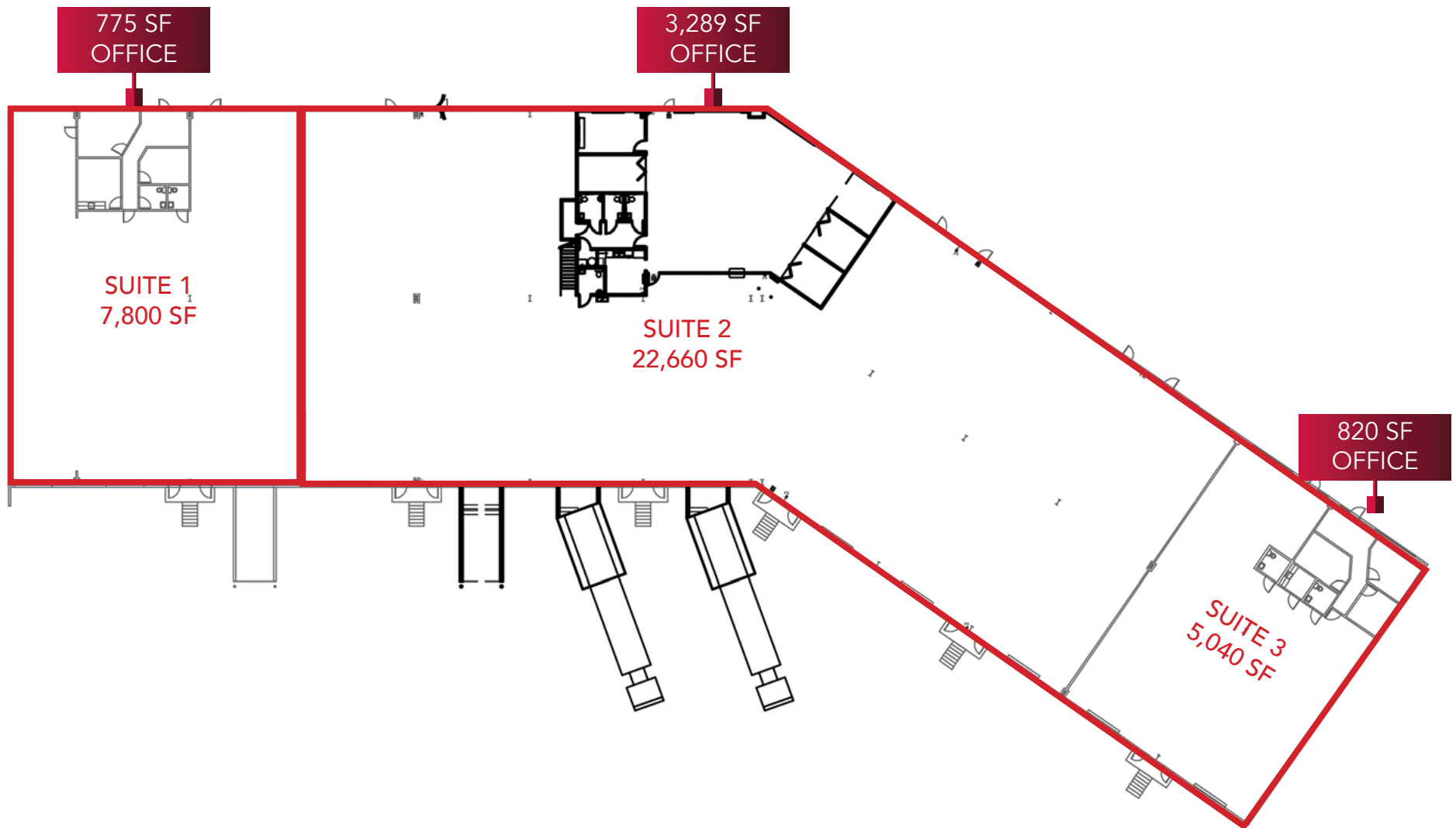
AVAILABILITY

AVAILABLE:	7,800 - 35,500 SF
DOORS:	85' -100'
LEASE RATE:	5040 SF - \$14.00/SF NNN 7,800 SF - \$14.00/SF NNN 22,660 SF - \$11.00/SF NNN
OP EX:	\$2.96/SF



Ryan Griffith
Vice President
rgriffith@lee-associates.com
D 321.281.8512

William "Bo" Bradford, CCIM, SIOR
President | Principal
bbradford@lee-associates.com
D 321.281.8502



Ryan Griffith
Vice President
rgriffith@lee-associates.com
D 321.281.8512

William "Bo" Bradford, CCIM, SIOR
President | Principal
bbradford@lee-associates.com
D 321.281.8502

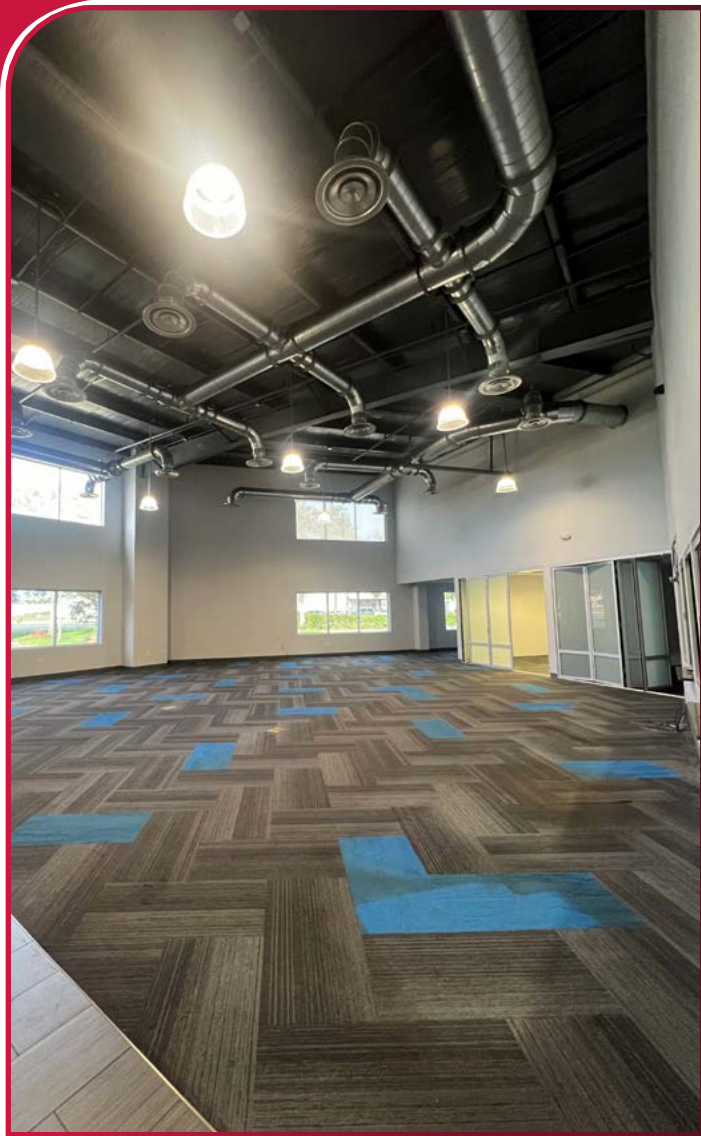


All information furnished regarding property for sale, rental or financing is from sources deemed reliable, but no warranty or representation is made to the accuracy thereof and same is submitted to errors, omissions, change of price, rental or other conditions prior to sale, lease or financing or withdrawal without notice. No liability of any kind is to be imposed on the broker herein.

2900 W ORANGE AVENUE

APOPKA, FL 32703

7,800 TO 35,500 SF AVAILABLE



Ryan Griffith
Vice President
rgriffith@lee-associates.com
D 321.281.8512

William "Bo" Bradford, CCIM, SIOR
President | Principal
bbradford@lee-associates.com
D 321.281.8502



All information furnished regarding property for sale, rental or financing is from sources deemed reliable, but no warranty or representation is made to the accuracy thereof and same is submitted to errors, omissions, change of price, rental or other conditions prior to sale, lease or financing or withdrawal without notice. No liability of any kind is to be imposed on the broker herein.