

SHERMAN WAY INDUSTRIAL CENTER

12626 RAYMER

Chad Gahr, SIOR
Executive Vice President
818. 383. 5581
cgahr@naicapital.com
Cal DRE Lic # 01230414

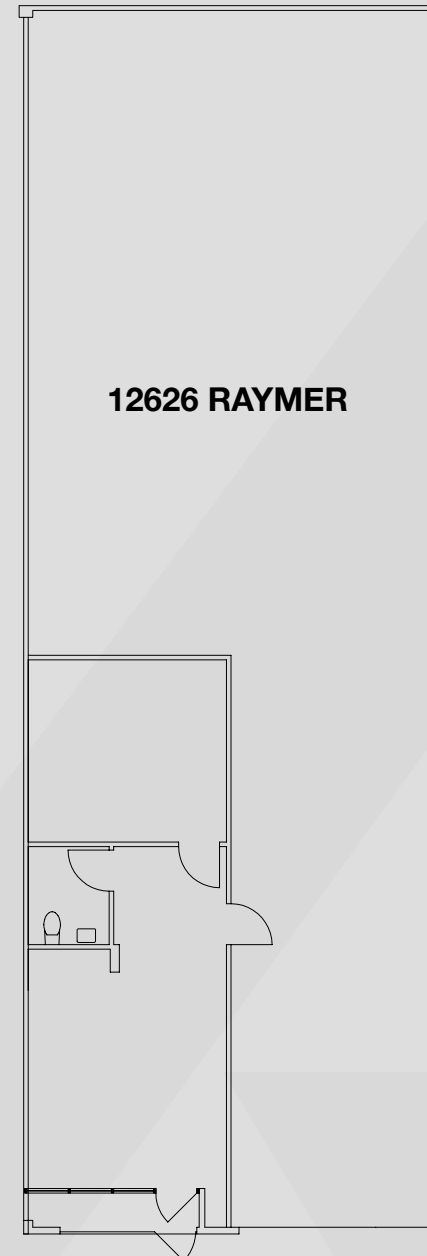
David Young
Executive Vice President
818. 422. 8658
dyoung@naicapital.com
Cal DRE Lic # 00914504

Eric Seidenglanz
Vice President
661. 341. 1243
eseidenglaz@naicapital.com
Cal DRE Lic # 01975684

NAI Capital
COMMERCIAL REAL ESTATE SERVICES, WORLDWIDE

12626 Raymer St

FLOOR PLAN

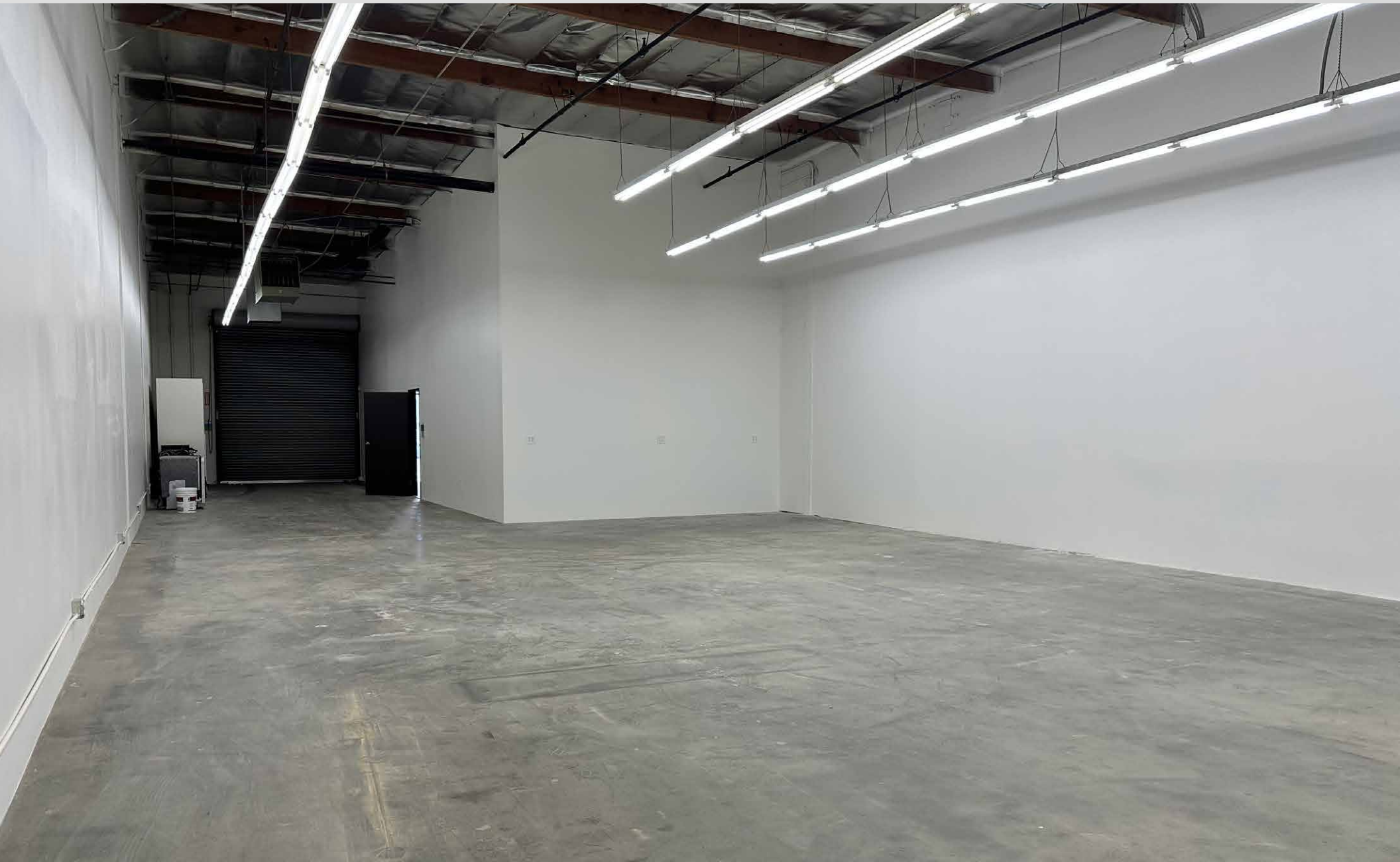


UNIT SUMMARY

Address:	12626 Raymer Street, North Hollywood, CA 91605
Unit Size:	2,742 RSF
Lease Rate:	\$6,443.70 (\$2.35/SF)
Lease Term:	Minimum 3 Years
Office Area:	±500 SF
Loading:	One (1) 14' x 10' Ground Level Loading Door
Clearance:	16' Interior Warehouse Ceiling Clearance
Fire Sprinklers:	Yes
Parking:	Five (5) Parking Stalls



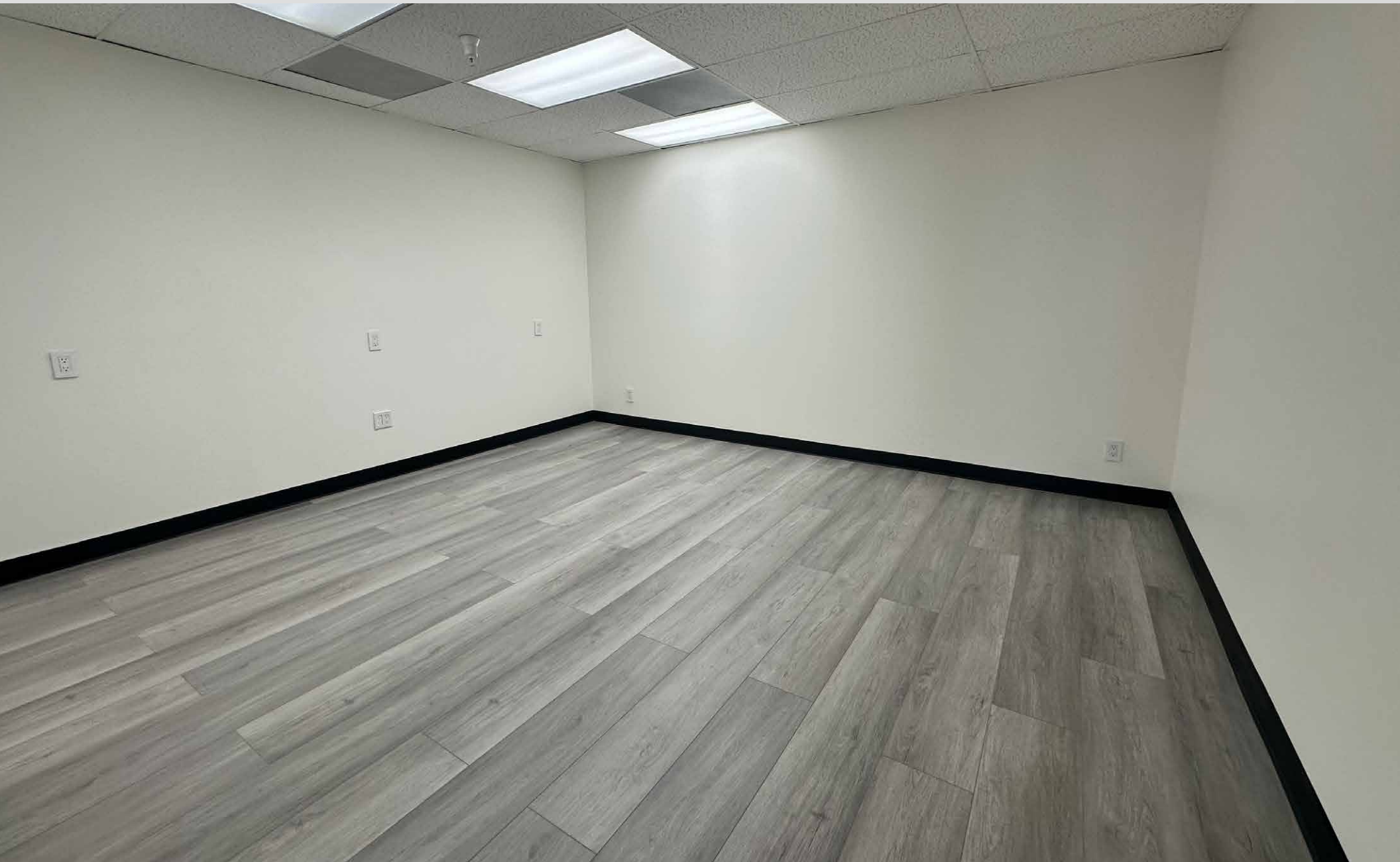
Property Gallery



Property Gallery



Property Gallery



Property Gallery



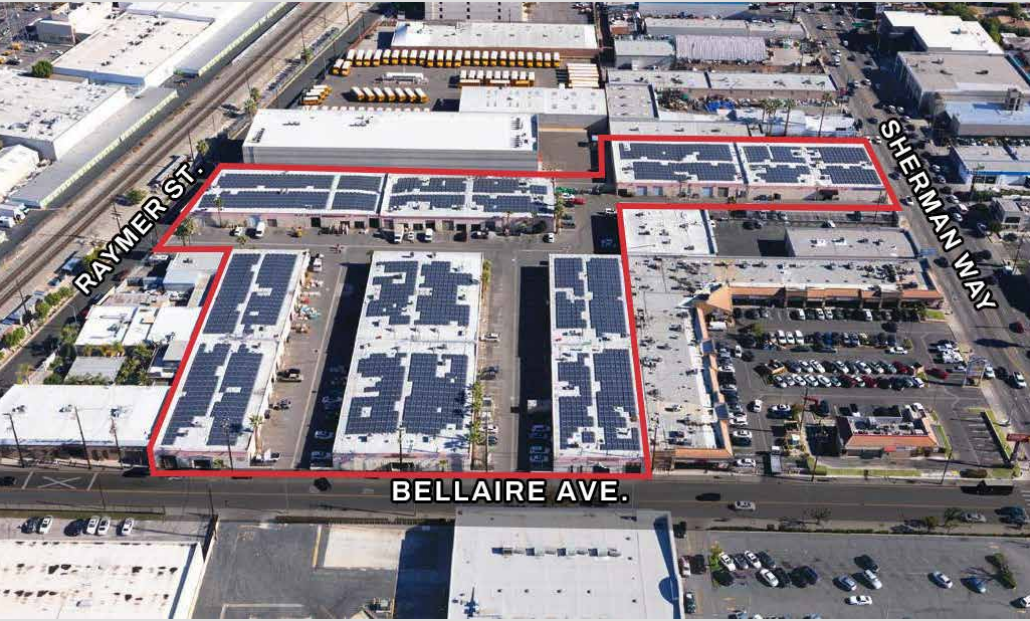
Property Gallery



Property Highlights

The Sherman Way Industrial Center is one of the premier business parks in the San Fernando Valley. The Sherman Way Industrial Center is a professionally managed, fully fenced and secured business park and offers tenants premium amenities such as 16' warehouse clearance, heavy power distribution, fire sprinklers, LED warehouse lighting, renovated office space and restrooms, and oversized loading doors. The Sherman Way Industrial Center can accommodate tenants of most sizes, offering units ranging from +/- 2,000 SF up to +/- 20,000 SF.

The Property is located one (1) block away from California State Route 170, +/- 2.5 miles from the Burbank Airport, and +/- 5 miles from the Van Nuys Airport.



BUILDING FEATURES



LEASE RATE
\$2.25 PSF



WAREHOUSE SF
2,742 SF



CLEAR HEIGHT
16'0"



OFFICE
500SF



FIRE SPRINKLERS



POWER
200 Amps, 120/240 Volts
3 Phase, 4 Wire
*Lessee to Verify



PARKING
2/1,000



GROUND LEVEL DOORS
One (1) 14'x10'
Ground Level Loading Doors



AMENITIES
Professionally Managed
Fully Fenced Business Park

Area Overview

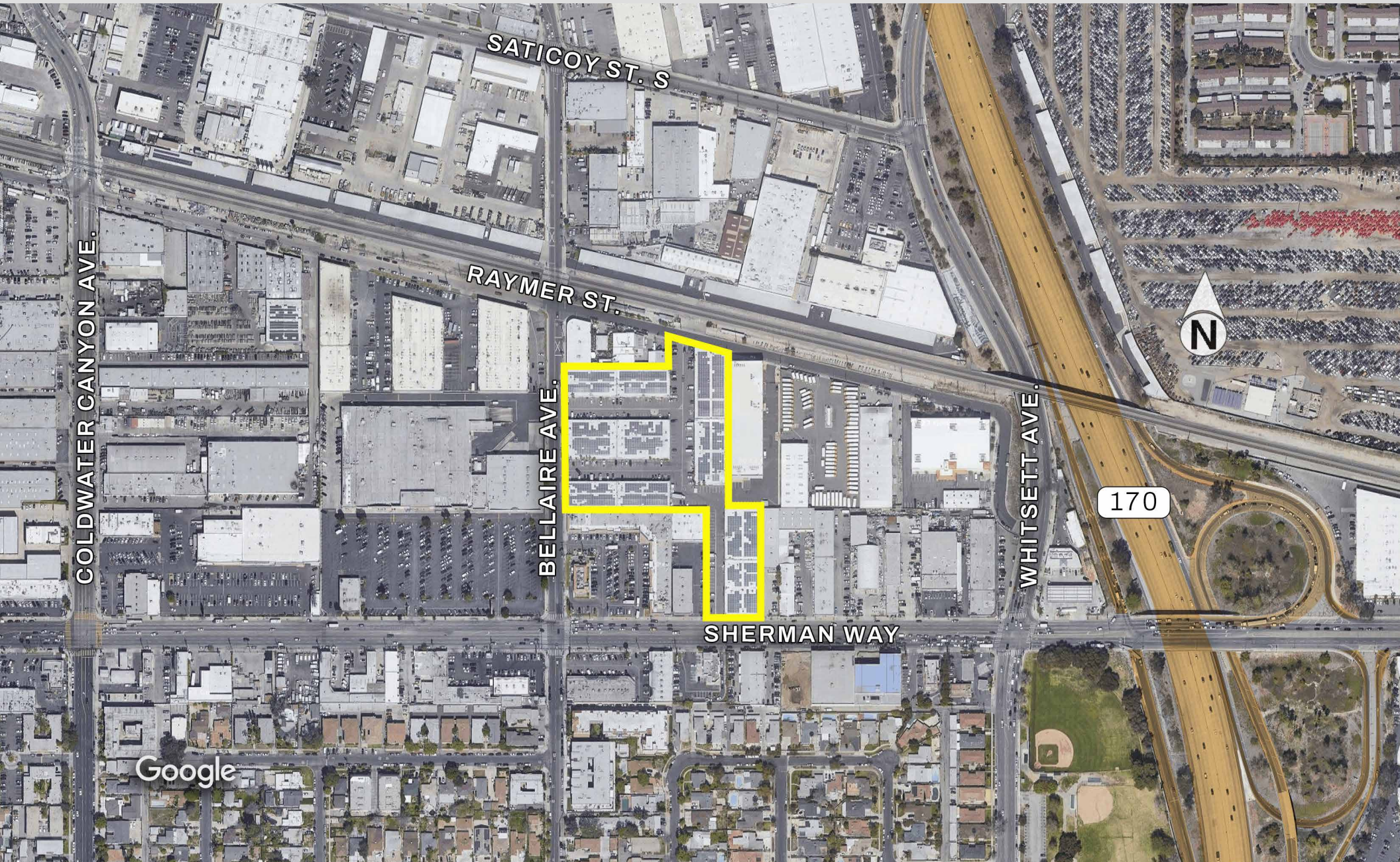
NORTH HOLLYWOOD, CA

North Hollywood is a vibrant neighborhood within the City of Los Angeles' San Fernando Valley region in Los Angeles County. North Hollywood, known as NoHo, lies approximately nine miles north of Hollywood and 16 miles north of Downtown LA. The community spans about six square miles and includes the popular NoHo Arts District. Sun Valley makes up the area's northern border, Burbank flanks the east, Toluca Lake and Studio City sit to the south with Valley Village and Valley Glen to the west. Highway 170 runs through the neighborhood providing easy access to the nearby 5, 101, 134, and 405 freeways.

The NoHo Arts District serves as an ideal environment for retail businesses, intimate entertainment venues and nightlife. North Hollywood emits a distinctly urban, creative vibe that speaks to its reputation as one of LA's hottest enclaves. Home to 22 independent, live theatres, the second-largest concentration of theaters in the nation, the community attracts actors, artists, writers, and musicians as well as enthusiasts to its galleries, sound stages, fashion boutiques and trendy cafes.

North Hollywood and the surrounding LA area offer a thriving economy to support the robust retail sector. NoHo is transforming into a regional transit-oriented hub for its clusters of tech, production, healthcare, and creative companies offering high-paying local jobs. The Metro station makes for easy commutes and provides transit for tourists. The Academy of Television Arts & Sciences, Universal Studios, the International Film Festival, and the Art Institute of California – Hollywood represent some of the area's top attractions and institutions bringing in thousands of workers and visitors every year. Coworking spaces are also on the rise, offering flexible office options for businesses and self-employed workers.

Aerial Map



SHERMAN WAY INDUSTRIAL CENTER

LISTING BROKERS



Chad Gahr, SIOR

Executive Vice President
818. 383. 5581
cgahr@naicapital.com
Cal DRE Lic # 01230414



David Young

Executive Vice President
818. 422. 8658
dyoung@naicapital.com
Cal DRE Lic # 00914504



Eric Seidenglaz

Vice President
661. 341. 1243
eseidenglaz@naicapital.com
Cal DRE Lic # 01975684

No warranty, express or implied, is made as to the accuracy of the information contained herein. This information is submitted subject to errors, omissions, change of price, rental or other conditions, withdrawal without notice, and is subject to any special listing conditions imposed by our principals. Cooperating brokers, buyers, tenants and other parties who receive this document should not rely on it, but should use it as a starting point of analysis, and should independently confirm the accuracy of the information contained herein through a due diligence review of the books, records, files and documents that constitute reliable sources of the information described herein. NAI Capital CA DRE #02130474