



1900

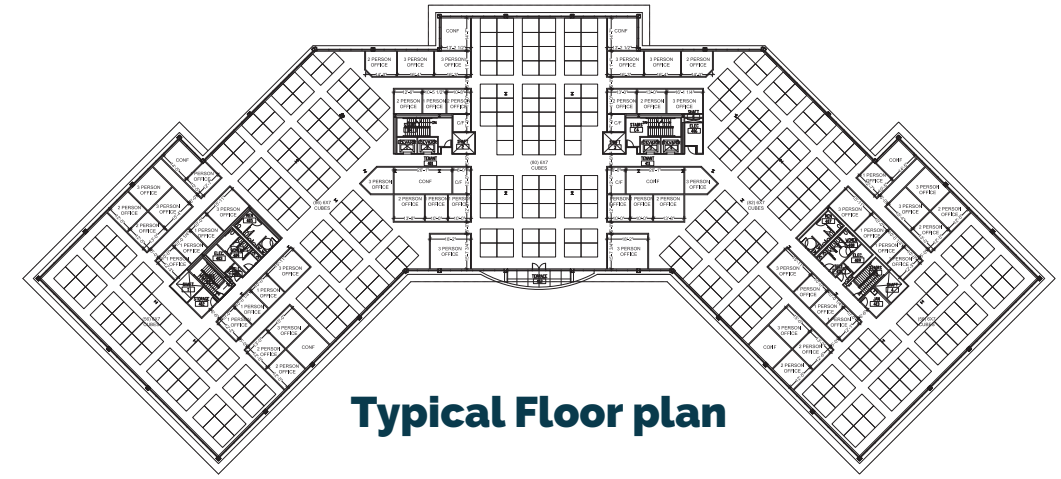
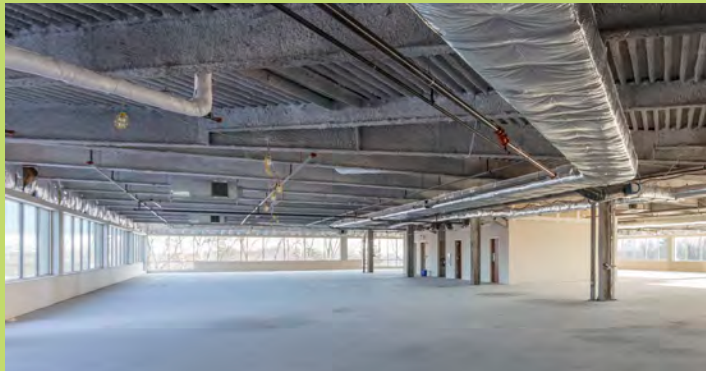
WEST PARK DRIVE

— WESTBOROUGH, MA —

CREATE YOUR VISION







**Typical Floor plan**

# 900 West Park Drive

900 West Park Drive is a 192,230 SF office building within the highly-sought after Westborough Office Park. This trophy asset is the perfect opportunity for any company looking to take center stage in Greater Boston's dynamic Metrowest region.

The ideal corporate headquarters opportunity, 900 West Park Drive features vast, open floor plates, an expansive window line, new HVAC, and a parking ratio of 4.2/1,000 SF. The property can also accommodate numerous amenities.

**4.2 PARKING SPACES PER 1,000 SF**

**20.6 ACRES**

**EXPANSIVE VIEWS**

**NEW HVAC UNITS**

**ABUNDANT NATURAL LIGHT**

**OPEN/FLEXIBLE FLOOR PLATES**

**CORPORATE HEADQUARTERS PROPERTY & STYLE LOBBY**

PROPOSED FOUR STORY OFFICE BUILDING  
199,200± SF  
F.F.ELEV. 485.0



# 900 WEST PARK DRIVE



## For more information, please contact:

**Phil DeSimone**

617 721 6466

[Desimone@kelleher-sadowsky.com](mailto:Desimone@kelleher-sadowsky.com)

**Tom Bodden**

774 214 6225

[Bodden@kelleher-sadowsky.com](mailto:Bodden@kelleher-sadowsky.com)

**Andrew Sherman**

860 748 2822

[Sherman@kelleher-sadowsky.com](mailto:Sherman@kelleher-sadowsky.com)

**Jim Umphrey**

508 759 6080

[Umphrey@kelleher-sadowsky.com](mailto:Umphrey@kelleher-sadowsky.com)







**900 West Park Drive is conveniently located at the interchange of Route 9 and I-495 and less than two miles from the Mass Pike. Set high on a hill and visible from Route 9, the building provides vast, 360-degree views. The property also benefits from the surrounding dynamic business community, with innovative, life science and service related companies such as Olympus, BNY Mellon, UMass, Astellas and eClinicalWorks all within close proximity.**

**For more information, please contact:**

**Phil DeSimone**  
617 721 6466  
Desimone@kelleher-sadowsky.com

**Tom Bodden**  
774 214 6225  
Bodden@kelleher-sadowsky.com

**Andrew Sherman**  
860 748 2822  
Sherman@kelleher-sadowsky.com

**Jim Umphrey**  
508 759 6080  
Umphrey@kelleher-sadowsky.com

