



# Demographic and Income Comparison Profile

Old Dominion  
8930 Old Dominion Dr Manassas VA 20110  
Rings: 1, 3, 5 mile radii

Latitude: 38.7273  
Longitude: -77.4700

	1 mile	3 mile	5 mile
<b>Census 2010 Summary</b>			
Population	10,431	49,798	124,738
Households	3,502	16,335	40,030
Families	2,608	12,049	29,709
Average Household Size	2.85	2.98	3.08
Owner Occupied Housing Units	2,559	11,738	27,474
Renter Occupied Housing Units	943	4,597	12,556
Median Age	34.0	34.5	33.0
<b>2019 Summary</b>			
Population	12,905	57,991	139,944
Households	4,343	18,901	44,328
Families	3,226	13,878	32,795
Average Household Size	2.84	3.01	3.13
Owner Occupied Housing Units	3,240	13,232	30,655
Renter Occupied Housing Units	1,103	5,670	13,674
Median Age	35.7	36.3	34.9
Median Household Income	\$108,390	\$102,015	\$95,145
Average Household Income	\$133,726	\$125,354	\$120,891
<b>2024 Summary</b>			
Population	14,115	62,092	149,820
Households	4,764	20,186	47,207
Families	3,537	14,807	34,902
Average Household Size	2.84	3.02	3.15
Owner Occupied Housing Units	3,609	14,344	32,994
Renter Occupied Housing Units	1,155	5,842	14,213
Median Age	36.5	37.3	35.8
Median Household Income	\$113,952	\$107,974	\$102,802
Average Household Income	\$146,687	\$137,707	\$133,525
<b>Trends: 2019-2024 Annual Rate</b>			
Population	1.81%	1.38%	1.37%
Households	1.87%	1.32%	1.27%
Families	1.86%	1.30%	1.25%
Owner Households	2.18%	1.63%	1.48%
Median Household Income	1.01%	1.14%	1.56%

Source: U.S. Census Bureau, Census 2010 Summary File 1. Esri forecasts for 2019 and 2024.



# Demographic and Income Comparison Profile

Old Dominion  
 8930 Old Dominion Dr Manassas VA 20110  
 Rings: 1, 3, 5 mile radii

Latitude: 38.7273  
 Longitude: -77.4700

2019 Households by Income	1 mile		3 mile		5 mile	
	Number	Percent	Number	Percent	Number	Percent
<\$15,000	122	2.8%	796	4.2%	1,516	3.4%
\$15,000 - \$24,999	117	2.7%	709	3.8%	1,683	3.8%
\$25,000 - \$34,999	137	3.2%	975	5.2%	2,222	5.0%
\$35,000 - \$49,999	262	6.0%	1,551	8.2%	3,586	8.1%
\$50,000 - \$74,999	525	12.1%	2,438	12.9%	6,920	15.6%
\$75,000 - \$99,999	709	16.3%	2,706	14.3%	7,358	16.6%
\$100,000 - \$149,999	1,183	27.2%	4,309	22.8%	9,548	21.5%
\$150,000 - \$199,999	602	13.9%	2,737	14.5%	5,704	12.9%
\$200,000+	687	15.8%	2,681	14.2%	5,792	13.1%
Median Household Income	\$108,390		\$102,015		\$95,145	
Average Household Income	\$133,726		\$125,354		\$120,891	
Per Capita Income	\$42,607		\$40,703		\$38,256	

2024 Households by Income	1 mile		3 mile		5 mile	
	Number	Percent	Number	Percent	Number	Percent
<\$15,000	124	2.6%	753	3.7%	1,362	2.9%
\$15,000 - \$24,999	112	2.4%	639	3.2%	1,460	3.1%
\$25,000 - \$34,999	129	2.7%	891	4.4%	1,963	4.2%
\$35,000 - \$49,999	241	5.1%	1,424	7.1%	3,242	6.9%
\$50,000 - \$74,999	521	10.9%	2,397	11.9%	6,777	14.4%
\$75,000 - \$99,999	749	15.7%	2,878	14.3%	7,860	16.7%
\$100,000 - \$149,999	1,301	27.3%	4,752	23.5%	10,704	22.7%
\$150,000 - \$199,999	737	15.5%	3,277	16.2%	6,939	14.7%
\$200,000+	851	17.9%	3,175	15.7%	6,901	14.6%
Median Household Income	\$113,952		\$107,974		\$102,802	
Average Household Income	\$146,687		\$137,707		\$133,525	
Per Capita Income	\$46,721		\$44,582		\$42,030	

**Data Note:** Income is expressed in current dollars.

**Source:** U.S. Census Bureau, Census 2010 Summary File 1. Esri forecasts for 2019 and 2024.



# Demographic and Income Comparison Profile

Old Dominion  
 8930 Old Dominion Dr Manassas VA 20110  
 Rings: 1, 3, 5 mile radii

Latitude: 38.7273  
 Longitude: -77.4700

2010 Population by Age	1 mile		3 mile		5 mile	
	Number	Percent	Number	Percent	Number	Percent
Age 0 - 4	763	7.3%	3,754	7.5%	10,228	8.2%
Age 5 - 9	754	7.2%	3,734	7.5%	9,656	7.7%
Age 10 - 14	811	7.8%	3,769	7.6%	9,418	7.6%
Age 15 - 19	746	7.2%	3,681	7.4%	8,989	7.2%
Age 20 - 24	688	6.6%	3,135	6.3%	8,139	6.5%
Age 25 - 34	1,621	15.5%	7,154	14.4%	19,816	15.9%
Age 35 - 44	1,713	16.4%	7,479	15.0%	19,439	15.6%
Age 45 - 54	1,776	17.0%	8,093	16.3%	18,901	15.2%
Age 55 - 64	958	9.2%	5,227	10.5%	11,730	9.4%
Age 65 - 74	338	3.2%	2,204	4.4%	5,169	4.1%
Age 75 - 84	192	1.8%	1,079	2.2%	2,283	1.8%
Age 85+	72	0.7%	487	1.0%	970	0.8%

2019 Population by Age	1 mile		3 mile		5 mile	
	Number	Percent	Number	Percent	Number	Percent
Age 0 - 4	821	6.4%	3,846	6.6%	10,132	7.2%
Age 5 - 9	900	7.0%	4,098	7.1%	10,433	7.5%
Age 10 - 14	958	7.4%	4,264	7.4%	10,625	7.6%
Age 15 - 19	818	6.3%	3,670	6.3%	9,003	6.4%
Age 20 - 24	803	6.2%	3,363	5.8%	8,211	5.9%
Age 25 - 34	2,008	15.6%	8,629	14.9%	21,802	15.6%
Age 35 - 44	1,918	14.9%	8,141	14.0%	20,686	14.8%
Age 45 - 54	1,859	14.4%	7,775	13.4%	18,407	13.2%
Age 55 - 64	1,614	12.5%	7,622	13.1%	16,397	11.7%
Age 65 - 74	806	6.2%	4,288	7.4%	9,332	6.7%
Age 75 - 84	288	2.2%	1,652	2.8%	3,592	2.6%
Age 85+	111	0.9%	644	1.1%	1,325	0.9%

2024 Population by Age	1 mile		3 mile		5 mile	
	Number	Percent	Number	Percent	Number	Percent
Age 0 - 4	911	6.5%	4,139	6.7%	10,933	7.3%
Age 5 - 9	934	6.6%	4,162	6.7%	10,646	7.1%
Age 10 - 14	971	6.9%	4,288	6.9%	10,783	7.2%
Age 15 - 19	898	6.4%	3,955	6.4%	9,832	6.6%
Age 20 - 24	747	5.3%	3,244	5.2%	8,080	5.4%
Age 25 - 34	2,262	16.0%	8,976	14.5%	22,638	15.1%
Age 35 - 44	2,174	15.4%	9,386	15.1%	23,504	15.7%
Age 45 - 54	1,850	13.1%	7,719	12.4%	18,289	12.2%
Age 55 - 64	1,659	11.8%	7,607	12.3%	16,790	11.2%
Age 65 - 74	1,135	8.0%	5,509	8.9%	11,617	7.8%
Age 75 - 84	441	3.1%	2,390	3.8%	5,171	3.5%
Age 85+	132	0.9%	715	1.2%	1,536	1.0%

Source: U.S. Census Bureau, Census 2010 Summary File 1. Esri forecasts for 2019 and 2024.



# Demographic and Income Comparison Profile

Old Dominion  
 8930 Old Dominion Dr Manassas VA 20110  
 Rings: 1, 3, 5 mile radii

Latitude: 38.7273  
 Longitude: -77.4700

2010 Race and Ethnicity	1 mile		3 mile		5 mile	
	Number	Percent	Number	Percent	Number	Percent
White Alone	6,890	66.1%	33,667	67.6%	78,866	63.2%
Black Alone	1,555	14.9%	6,211	12.5%	15,640	12.5%
American Indian Alone	71	0.7%	316	0.6%	758	0.6%
Asian Alone	762	7.3%	2,808	5.6%	7,745	6.2%
Pacific Islander Alone	10	0.1%	60	0.1%	163	0.1%
Some Other Race Alone	738	7.1%	4,801	9.6%	15,783	12.7%
Two or More Races	404	3.9%	1,934	3.9%	5,784	4.6%
Hispanic Origin (Any Race)	1,780	17.1%	11,392	22.9%	33,653	27.0%

2019 Race and Ethnicity	1 mile		3 mile		5 mile	
	Number	Percent	Number	Percent	Number	Percent
White Alone	7,583	58.8%	35,533	61.3%	79,833	57.0%
Black Alone	2,226	17.3%	7,934	13.7%	18,473	13.2%
American Indian Alone	98	0.8%	414	0.7%	883	0.6%
Asian Alone	1,209	9.4%	4,355	7.5%	10,864	7.8%
Pacific Islander Alone	16	0.1%	89	0.2%	224	0.2%
Some Other Race Alone	1,165	9.0%	6,957	12.0%	22,092	15.8%
Two or More Races	606	4.7%	2,709	4.7%	7,573	5.4%
Hispanic Origin (Any Race)	2,915	22.6%	16,783	28.9%	47,482	33.9%

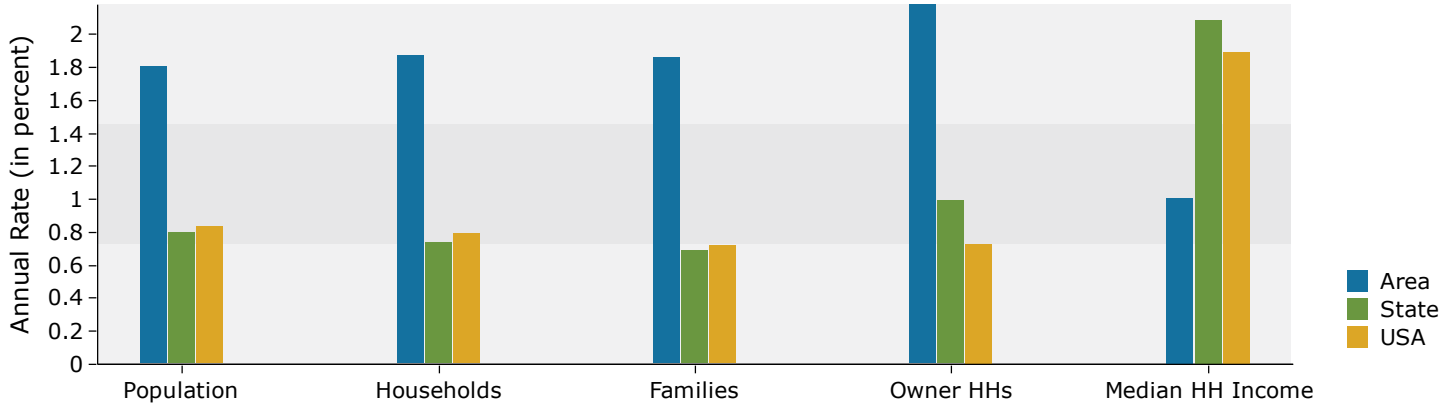
  

2024 Race and Ethnicity	1 mile		3 mile		5 mile	
	Number	Percent	Number	Percent	Number	Percent
White Alone	7,755	54.9%	35,969	57.9%	80,691	53.9%
Black Alone	2,552	18.1%	8,751	14.1%	20,171	13.5%
American Indian Alone	111	0.8%	471	0.8%	958	0.6%
Asian Alone	1,469	10.4%	5,235	8.4%	12,773	8.5%
Pacific Islander Alone	21	0.1%	104	0.2%	256	0.2%
Some Other Race Alone	1,477	10.5%	8,389	13.5%	26,109	17.4%
Two or More Races	730	5.2%	3,172	5.1%	8,862	5.9%
Hispanic Origin (Any Race)	3,733	26.4%	20,508	33.0%	56,651	37.8%

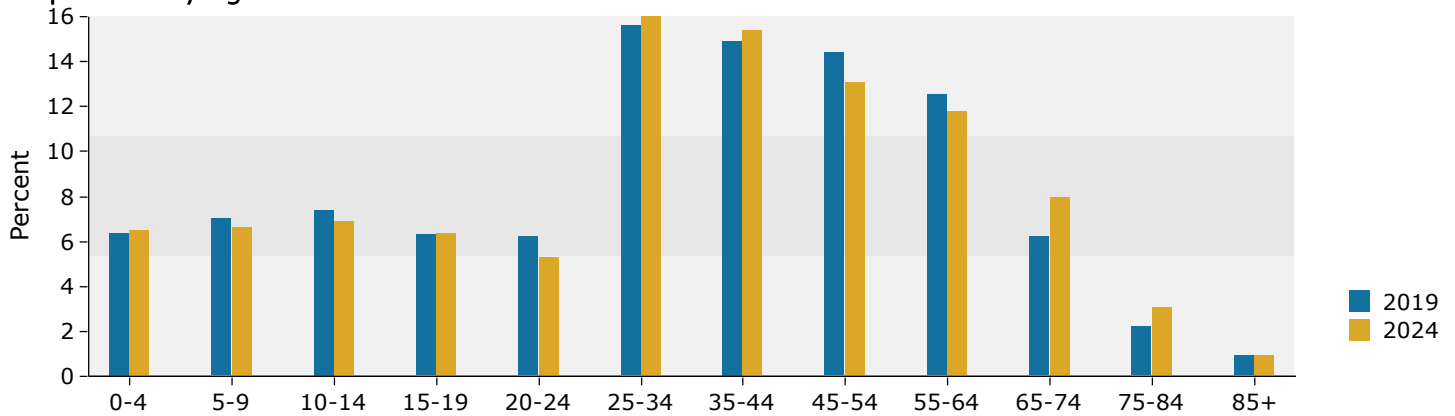
Source: U.S. Census Bureau, Census 2010 Summary File 1. Esri forecasts for 2019 and 2024.

## 1 mile

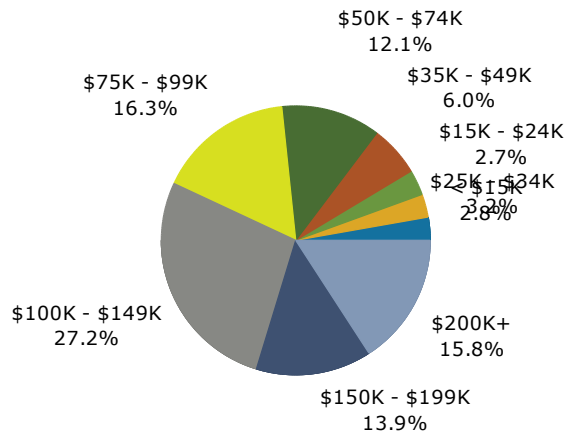
### Trends 2019-2024



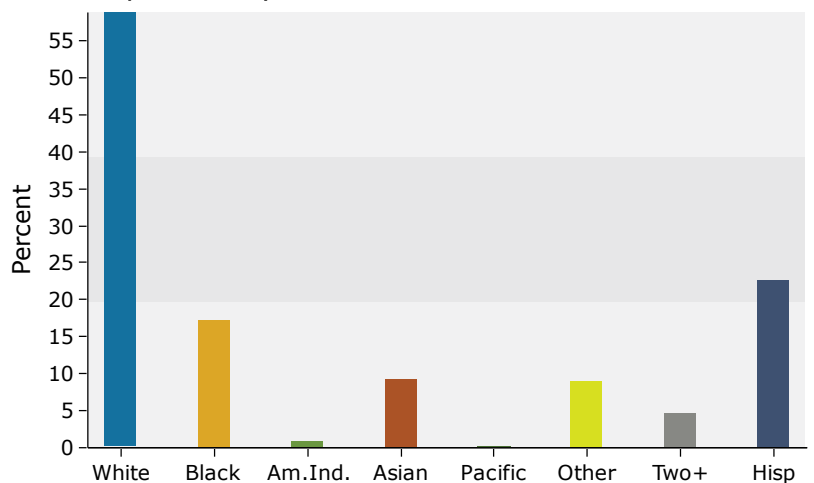
### Population by Age



### 2019 Household Income



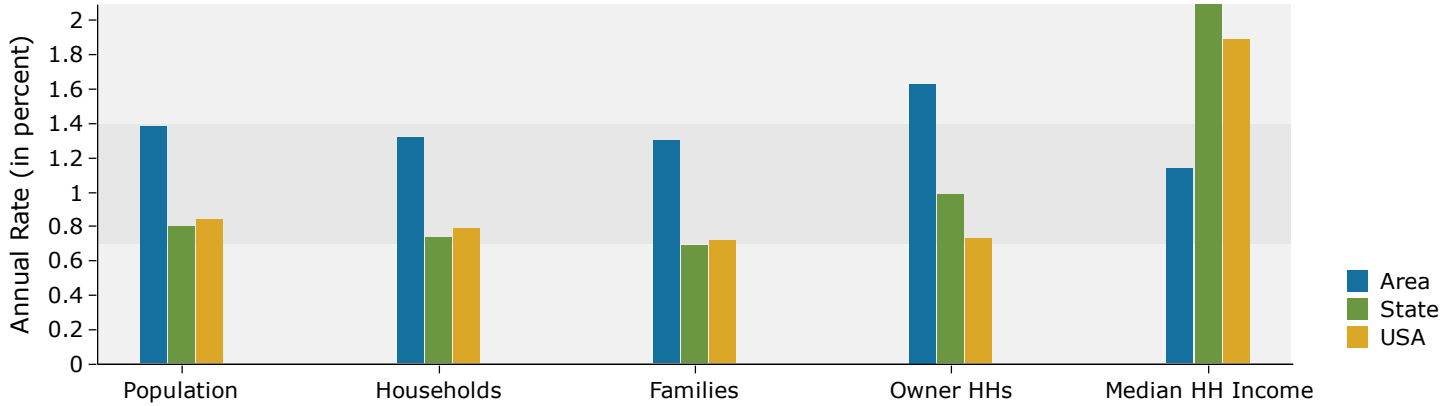
### 2019 Population by Race



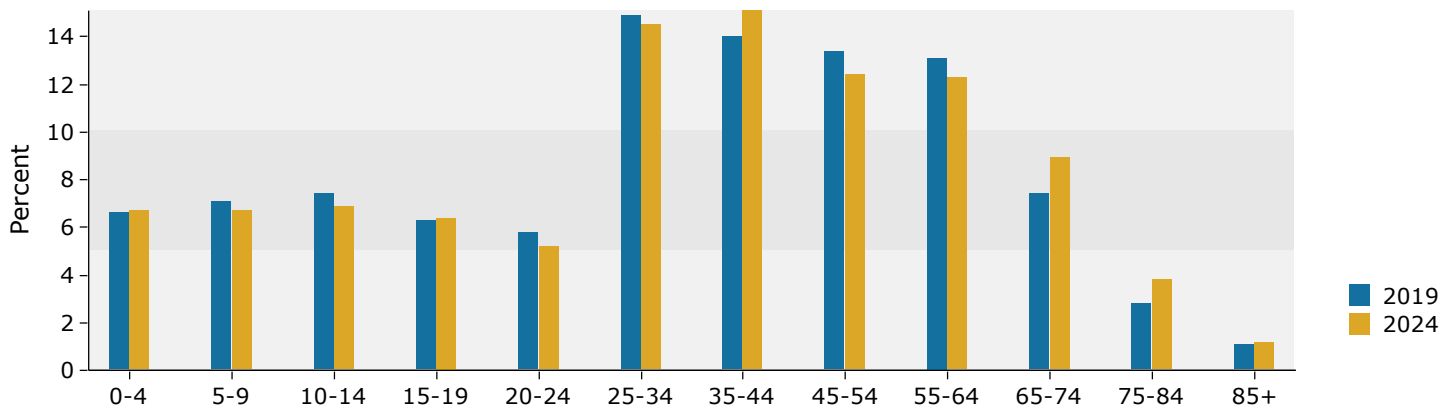
Source: U.S. Census Bureau, Census 2010 Summary File 1. Esri forecasts for 2019 and 2024.

## 3 mile

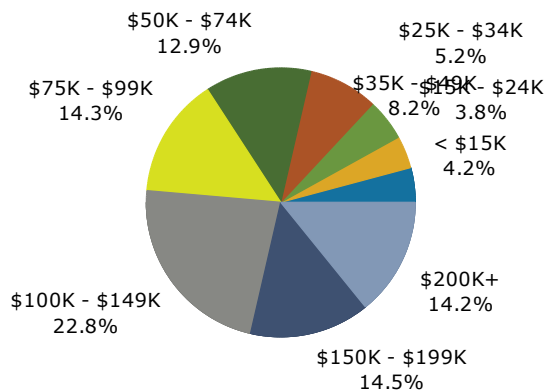
### Trends 2019-2024



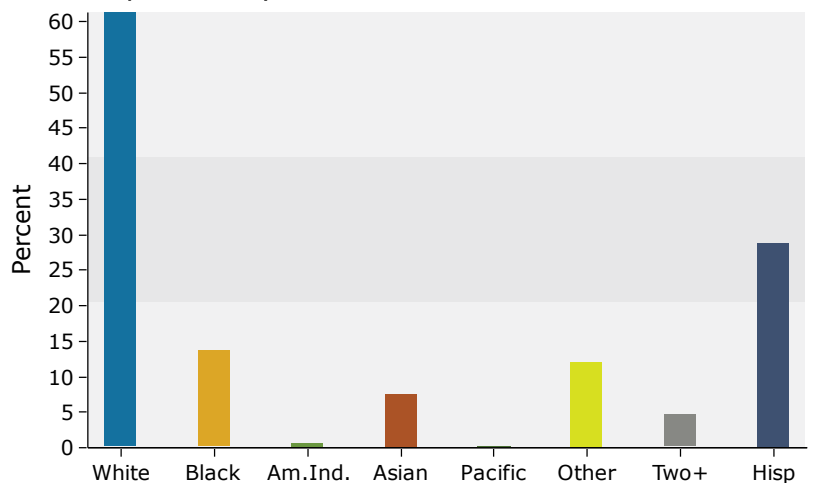
### Population by Age



### 2019 Household Income



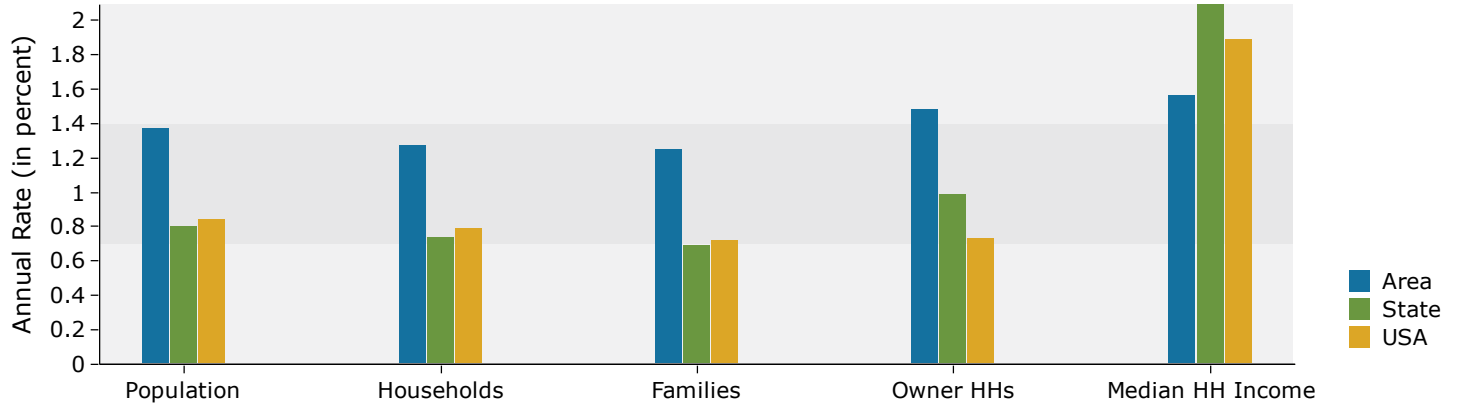
### 2019 Population by Race



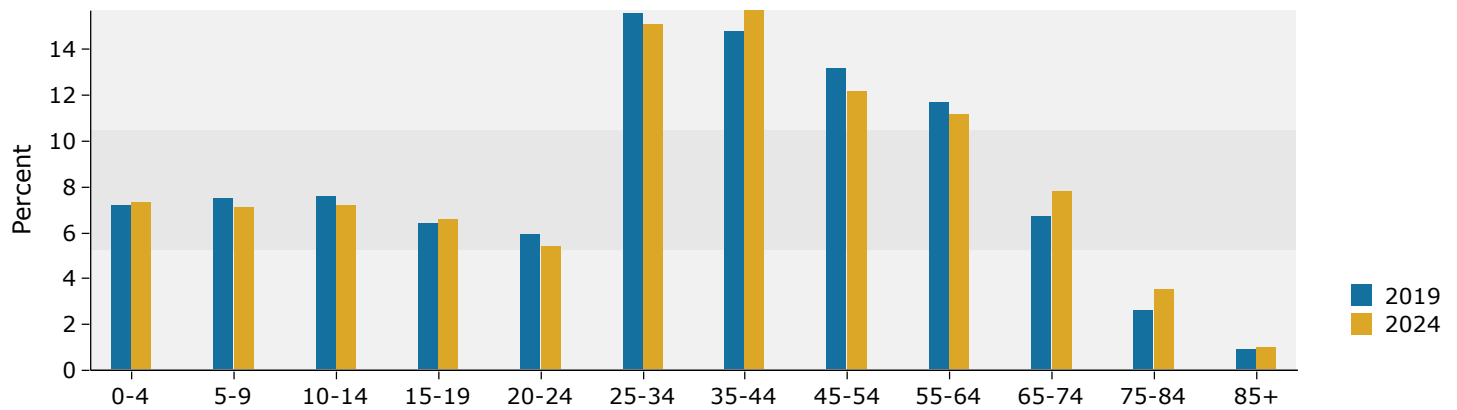
Source: U.S. Census Bureau, Census 2010 Summary File 1. Esri forecasts for 2019 and 2024.

## 5 mile

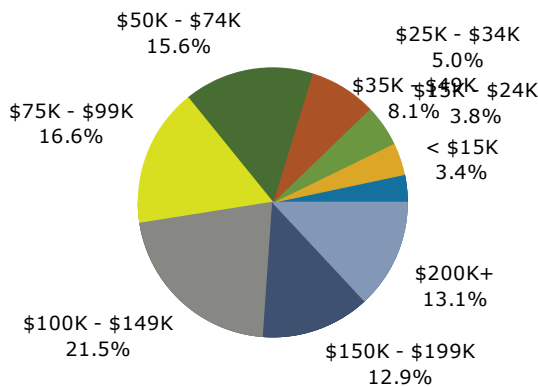
### Trends 2019-2024



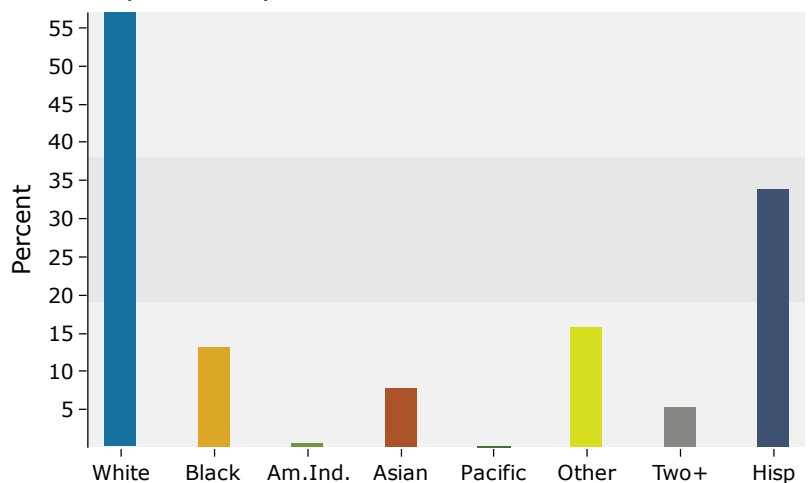
### Population by Age



### 2019 Household Income



### 2019 Population by Race



Source: U.S. Census Bureau, Census 2010 Summary File 1. Esri forecasts for 2019 and 2024.