

Petersboro Development Land

48.75 Acres Available

Hwy 30 & Hwy 23
Petersboro, Cache County, UT 84325

Potential for Agricultural, Residential and Commercial Development



Petersboro Development Land

Hwy 30 & Hwy 23 | Petersboro, Cache County, UT 84325

For Sale



48.75

Total Acres

\$1,003,000

Total Sale Price

A10

Current Zoning

\$22K

Price Per Acre, 13.14 acres for Parcel 12-033-0057

\$20K

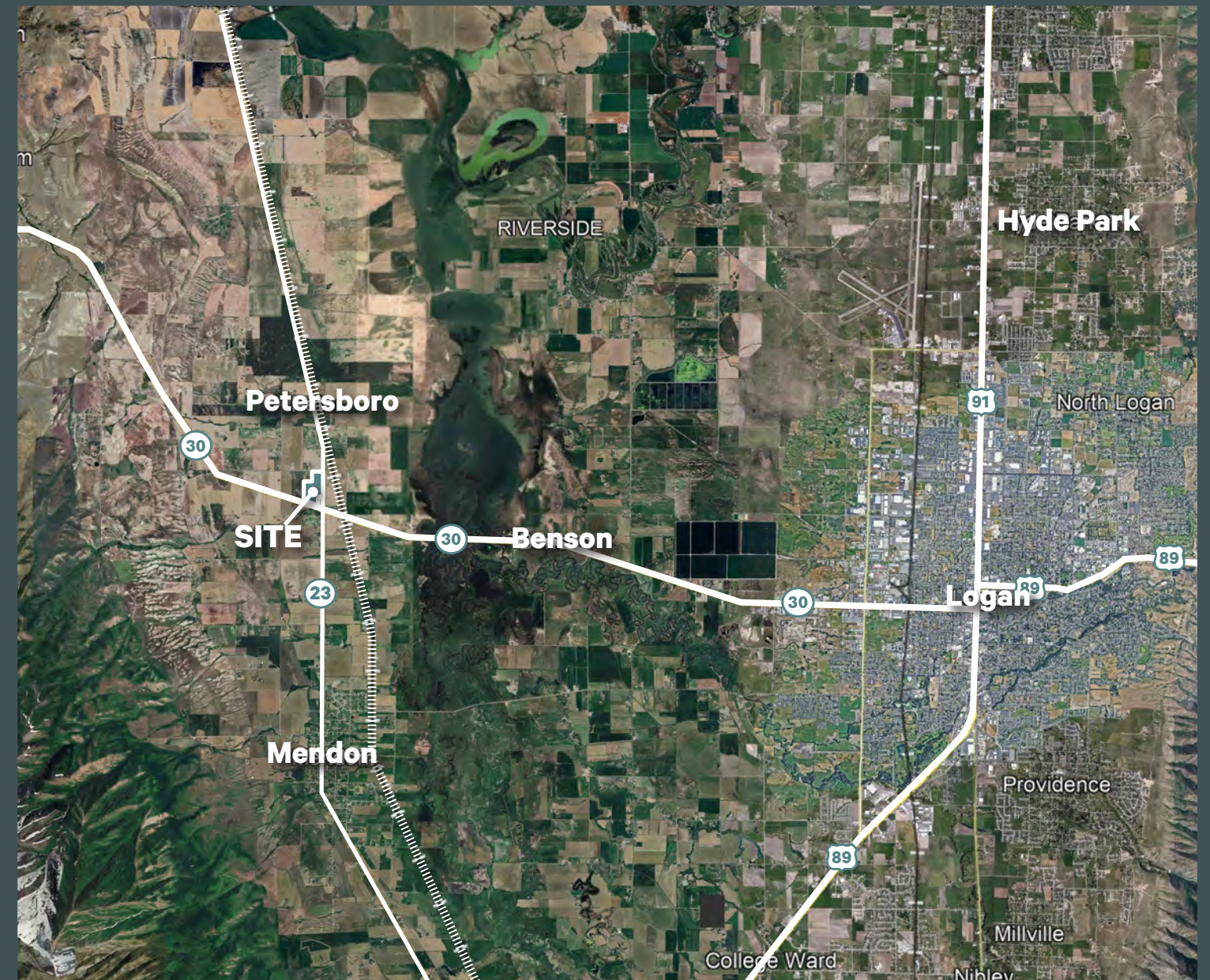
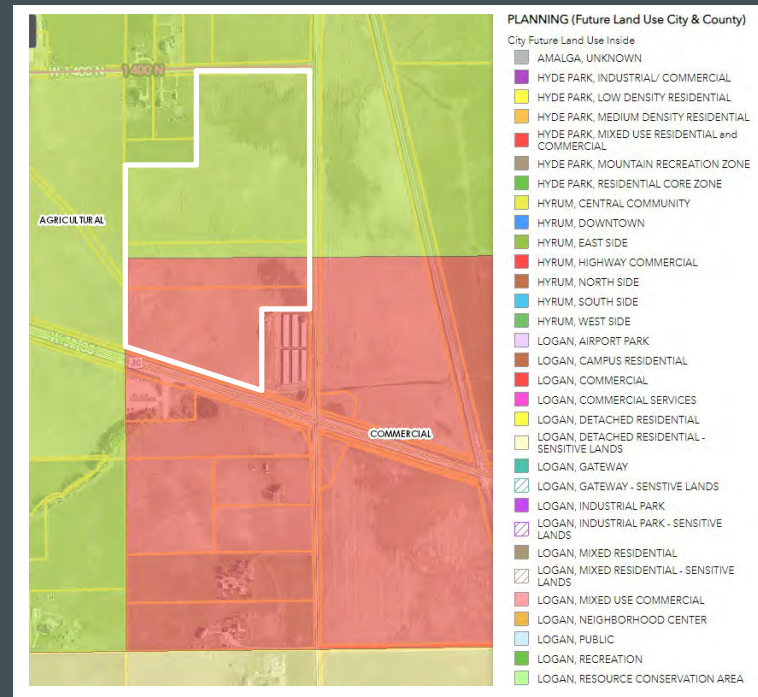
Price Per Acre, 35.61 acres for Parcels 12-033-0003 & 12-033-0058

The Offering

CBRE is pleased to present an opportunity to purchase approximately 48.75 acre with frontage to Hwy 30 and Hwy 23 near Petersboro, Utah.

Currently zoned A10 which allows one unit per ten acres. Future land use allows for commercial development with approximately 20 acres on the southern half of the property. This gives the potential for agricultural, residential or commercial development that caters to community needs as the area grows.

Future Land Use Map



Petersboro Development Land

Hwy 30 & Hwy 23 | Petersboro, Cache County, UT 84325

For Sale

Zoning Map

Property Overview

- + 48.75 Acres
- + Future Land Use: Approx. 20 acres Commercial, remainder Agricultural
- + Parcels:
 - 12-033-0003 (26.61 acres) \$20,000/acre
 - 12-033-0058 (9 acres) \$20,000/acre
 - 12-033-0057 (13.14 acres) \$22,000/acre
- + Current Zoning: A10
- + Power nearby. No water shares. Buyer to verify all utilities.
- + 8 miles to Logan
- + 16 miles to Tremonton
- + 25 miles to Brigham City



Contact Us

Patrick Juhlin

First Vice President
+1 801 869 8005
patrick.juhlin@cbre.com

Bruce Zollinger

First Vice President
+1 801 869 8040
bruce.zollinger@cbre.com

© 2024 CBRE, Inc. All rights reserved. This information has been obtained from sources believed reliable, but has not been verified for accuracy or completeness. You should conduct a careful, independent investigation of the property and verify all information. Any reliance on this information is solely at your own risk. CBRE and the CBRE logo are service marks of CBRE, Inc. All other marks displayed on this document are the property of their respective owners, and the use of such logos does not imply any affiliation with or endorsement of CBRE. Photos herein are the property of their respective owners. Use of these images without the express written consent of the owner is prohibited.

