



±2.33 ACRES FOR SALE OR BUILD TO SUIT

# SOUTH MAIN STREET

ROLESVILLE, NC 27571

Mike Glennon  
Broker  
C: 703.772.2339  
mglennon@lee-associates.com

Moss Withers, SIOR, MBA  
CEO, Principal  
C: 919.810.2492  
mwithers@lee-associates.com

**LEE & ASSOCIATES**  
COMMERCIAL REAL ESTATE SERVICES  
RALEIGH DURHAM

All information furnished regarding property for sale, rental or financing is from sources deemed reliable, but no warranty or representation is made to the accuracy thereof and same is submitted to errors, omissions, change of price, rental or other conditions prior to sale, lease or financing or withdrawal without notice. No liability of any kind is to be imposed on the broker herein.



# LAND FOR SALE OR BUILD TO SUIT SOUTH MAIN STREET

Rolesville, NC 27571

## PROPERTY DESCRIPTION

Retail outparcel available for sale or build to suit in Wallbrook, a 78-acre mixed-use community in Rolesville, North Carolina.

- » ±2.33 acres
- » Utilities and rough grade will be included with the site
- » Wake County PIN 1758671871 (to be subdivided)
- » General Commercial Conditional zoning (Rolesville)
- » The following restriction shall encumber the Property until January 1, 2028:
  1. The Property shall not be used as a retail store selling, renting or providing a variety of merchandise and/or services customarily sold, rented or provided from time to time at stores operated or franchised by 7-Eleven within the state of North Carolina (whether such store is national, regional, ethnic, and/or "mom and pop"), such as, by way of example and not limitation, Cumberland Farms, Circle K, Stop N Shop, On the Run, High's, QuickChek, Store 24, WaWa, and Kwik Stop.
- » \$21 million roadway improvement project underway on Main Street, aimed to widen and beautify roads and increase pedestrian paths

## LOCATION

The property is located on the South Main Street near Burlington Mills Road in Rolesville, and is part of the 78-acre Wallbrook mixed-use community.

## SALE PRICE

\$1,500,000

Mike Glennon  
Broker  
C: 703.772.2339  
mglennon@lee-associates.com

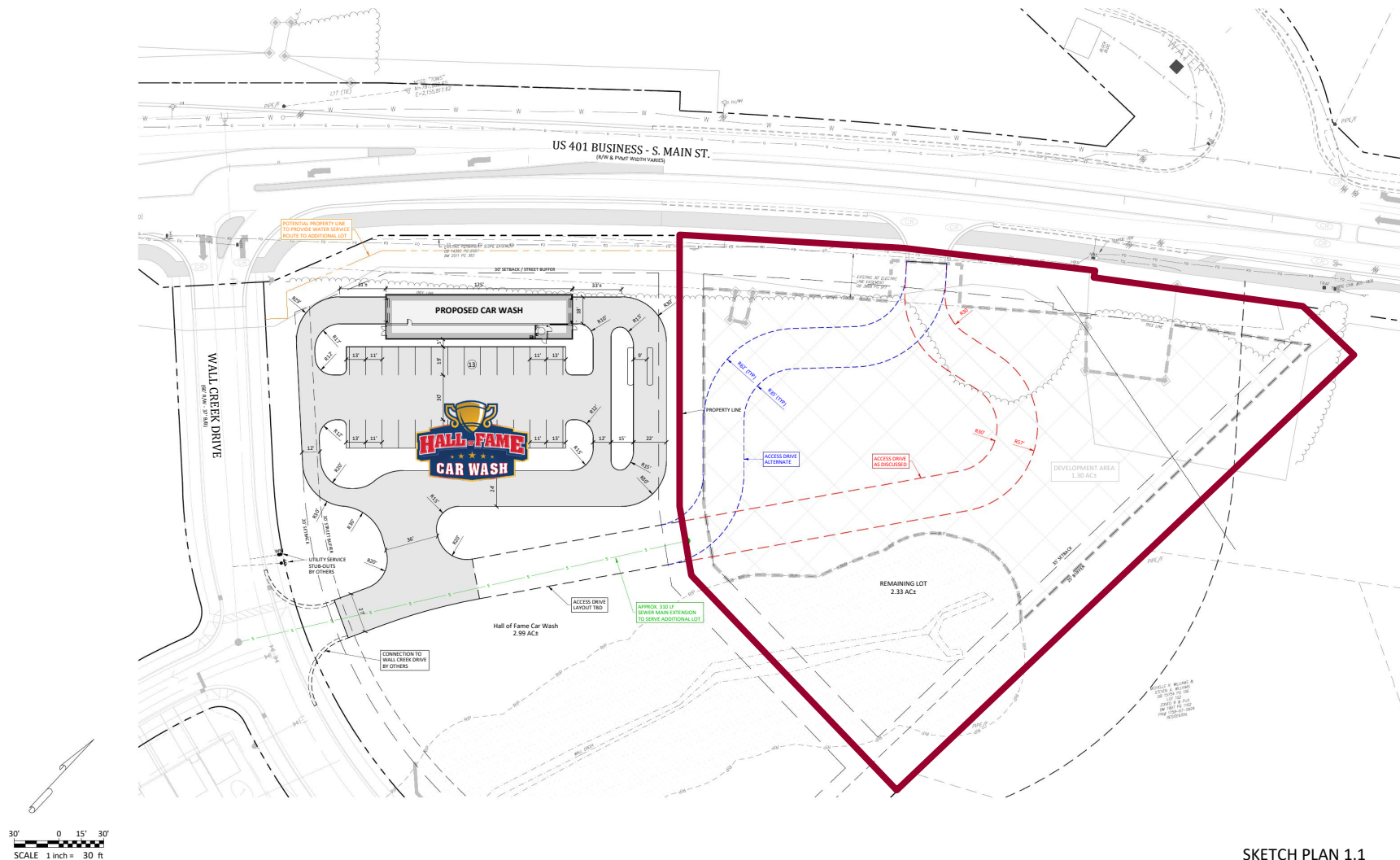
Moss Withers, SIOR, MBA  
CEO, Principal  
C: 919.810.2492  
mwithers@lee-associates.com



All information furnished regarding property for sale, rental or financing is from sources deemed reliable, but no warranty or representation is made to the accuracy thereof and same is submitted to errors, omissions, change of price, rental or other conditions prior to sale, lease or financing or withdrawal without notice. No liability of any kind is to be imposed on the broker herein.

# LAND FOR SALE OR BUILD TO SUIT SOUTH MAIN STREET

Rolesville, NC 27571



SKETCH PLAN 1.1

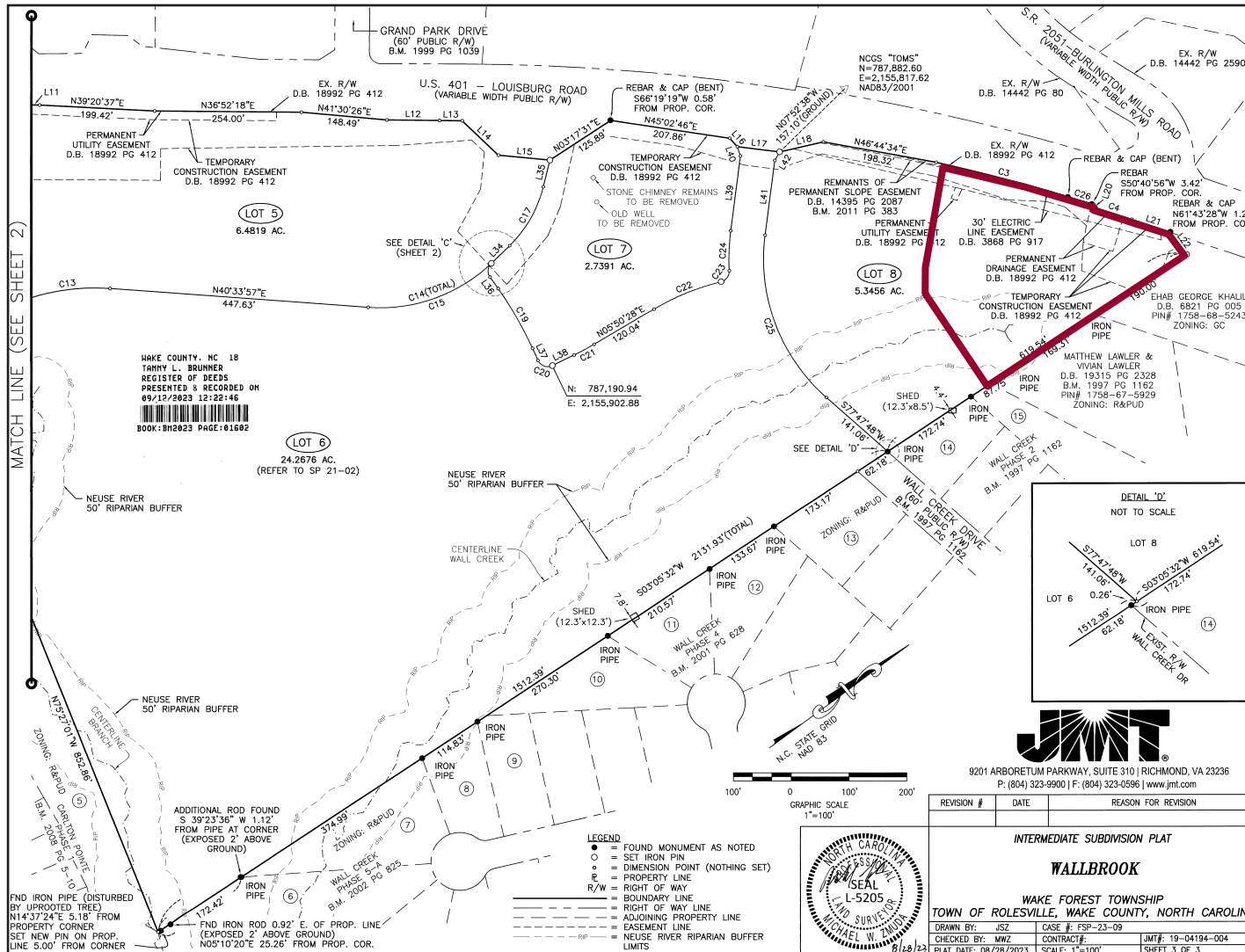
July 22, 2024

Mike Glennon  
Broker  
C: 703.772.2339  
mglennon@lee-associates.com

Moss Withers, SIOR, MBA  
CEO, Principal  
C: 919.810.2492  
mwithers@lee-associates.com

All information furnished regarding property for sale, rental or financing is from sources deemed reliable, but no warranty or representation is made to the accuracy thereof and same is submitted to errors, omissions, change of price, rental or other conditions prior to sale, lease or financing or withdrawal without notice. No liability of any kind is to be imposed on the broker herein.

Rolesville, NC 27571



Mike Glennon  
Broker  
C: 703.772.2339  
mglennon@lee-associates.com

Moss Withers, SIOR, MBA  
CEO, Principal  
C: 919.810.2492  
mwithers@lee-associates.com

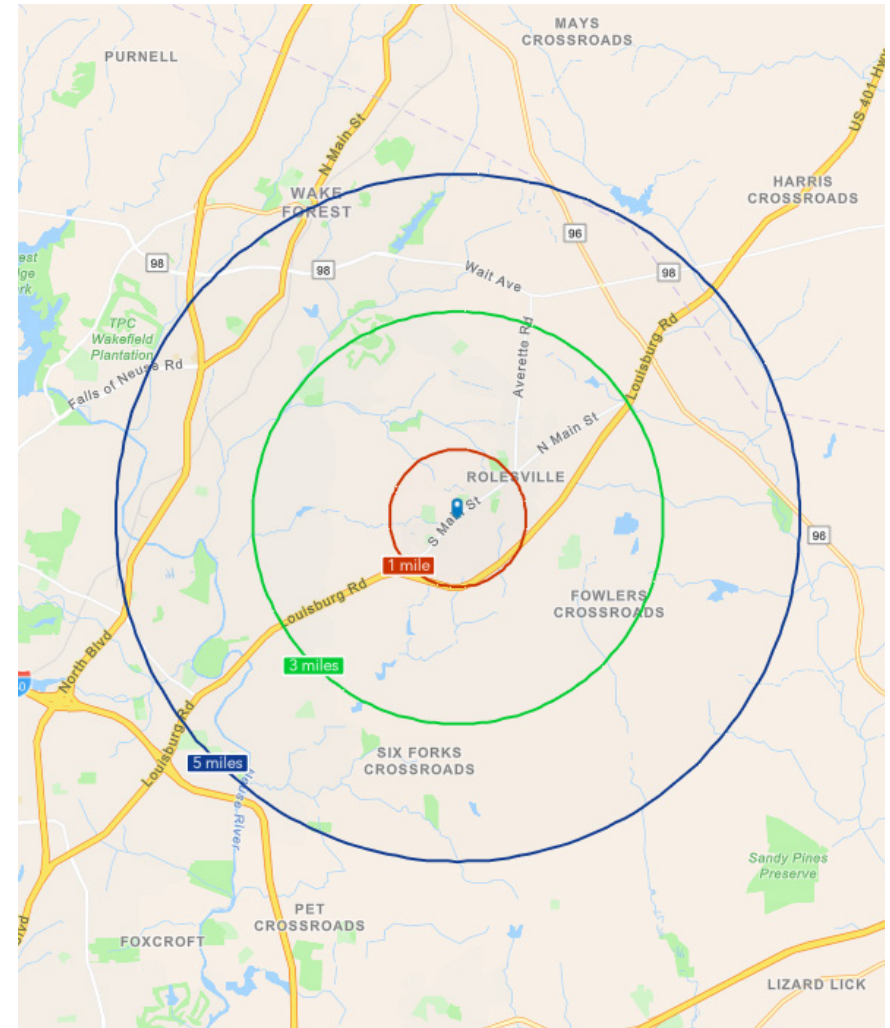
All information furnished regarding property for sale, rental or financing is from sources deemed reliable, but no warranty or representation is made to the accuracy thereof and same is submitted to errors, omissions, change of price, rental or other conditions prior to sale, lease or financing or withdrawal without notice. No liability of any kind is to be imposed on the broker herein.



# LAND FOR SALE OR BUILD TO SUIT SOUTH MAIN STREET

Rolesville, NC 27571

	1 MILE	3 MILES	5 MILES
Population (2024)	5,060	35,830	96,189
Median Age	38.7	39.6	38.3
Average Household Income	\$139,069	\$152,184	\$140,469
Average Home Value	\$560,258	\$567,216	\$509,805
Bachelor's Degree or Higher	55.2%	63.2%	57.4%



Mike Glennon  
Broker  
C: 703.772.2339  
mglennon@lee-associates.com

Moss Withers, SIOR, MBA  
CEO, Principal  
C: 919.810.2492  
mwithers@lee-associates.com

All information furnished regarding property for sale, rental or financing is from sources deemed reliable, but no warranty or representation is made to the accuracy thereof and same is submitted to errors, omissions, change of price, rental or other conditions prior to sale, lease or financing or withdrawal without notice. No liability of any kind is to be imposed on the broker herein.