



**Investment  
Properties  
Corporation**

**F O R L E A S E**

# FLORIDA COASTAL PROFESSIONAL CENTER OFFICE/MEDICAL SPACE

📍 Located West of Tamiami Trail North in the Park Shore Area

801 Anchor Rode Drive | Naples, Florida 34103



**CONTACT (239) 261-3400**

**John Cheffy ext. 182, [john@ipcnaples.com](mailto:john@ipcnaples.com)**

Investment Properties Corporation of Naples  
3838 Tamiami Trail North Suite 402  
Naples Florida 34103-3586

Tel: 239-261-3400 Fax: 249-261-7579 [www.ipcnaples.com](http://www.ipcnaples.com)

*Licensed Real Estate Broker*

The statement and figures presented herein, while not guaranteed, are secured from sources we believe authoritative. Subject to prior sale, lease, withdrawal and price change without notice.



**Investment  
Properties  
Corporation**

# PROFESSIONAL MEDICAL/OFFICE SPACE

801 Anchor Rode Drive | Naples, Florida 34103

Attractive professional **medical or office** space located west of US-41 in the Park Shore area of Naples.

The quaint campus setting provides a professional yet comfortable venue for any office user. Units overlook well-manicured and lush gardens.

SUITE	SIZE	BASE RENT PSF/YR	ESTIMATED 2025 NNN	ESTIMATED MONTHLY TOTAL <i>(prior to sales tax)</i>	AVAILABLE
301	1,090 SF	\$20.00	\$10.80 PSF	\$2,797.67	Immediately

**Parking is plentiful, and covered parking is available.**



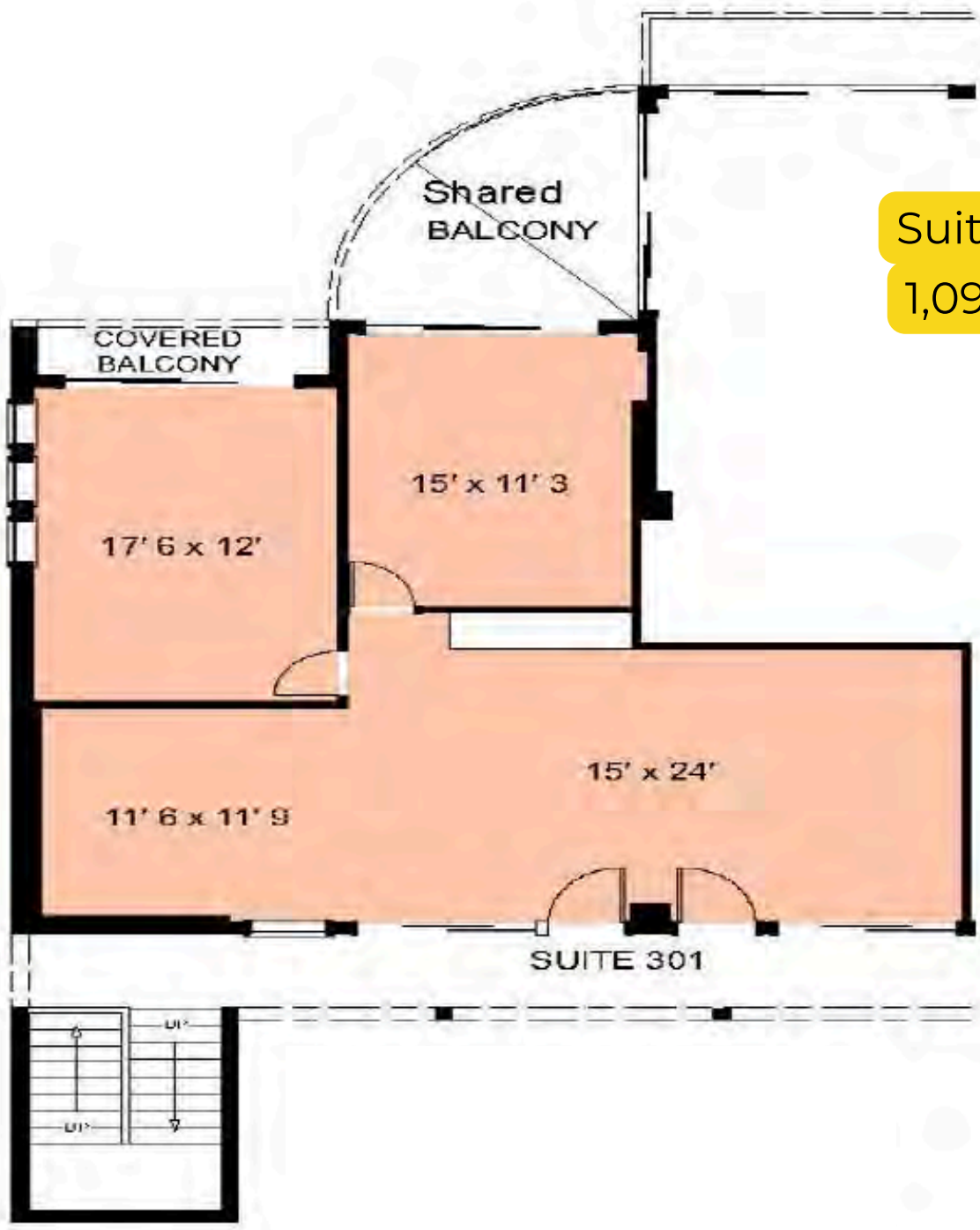
The statement and figures presented herein, while not guaranteed, are secured from sources we believe authoritative. Subject to prior sale, lease, withdrawal and price change without notice.



**Investment  
Properties  
Corporation**

# PROFESSIONAL MEDICAL/OFFICE SPACE

801 Anchor Rode Drive | Naples, Florida 34103



Suite 301  
1,090 SF



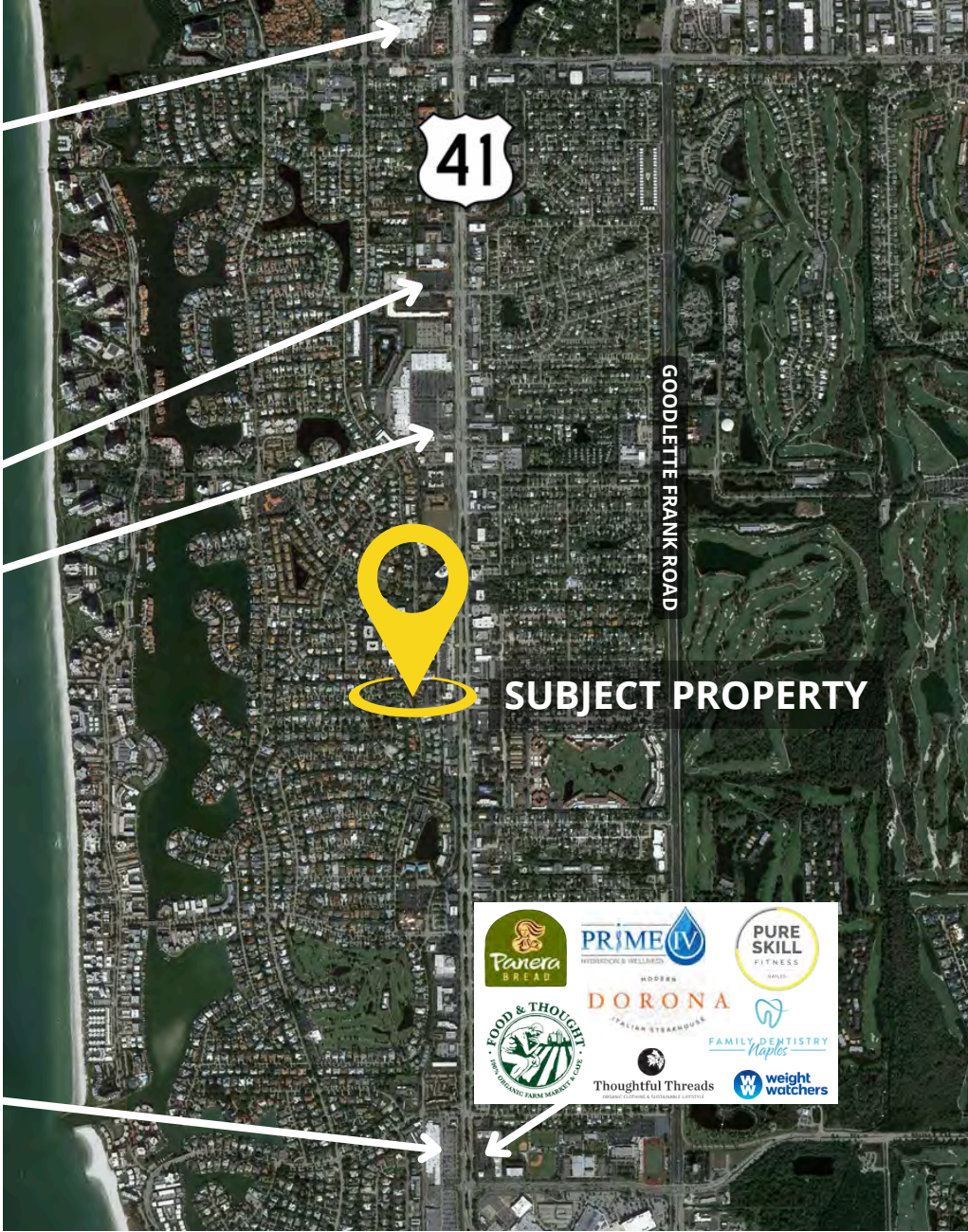
**Investment  
Properties  
Corporation**

# PROFESSIONAL MEDICAL/OFFICE SPACE

801 Anchor Rode Drive | Naples, Florida 34103

**WATERSIDESHOPS**

**AMENITY RICH LOCATION  
FOR EMPLOYEES**



*click here!*



DEMOGRAPHICS 2025	1 mile	3 miles	5 miles
Est. Population	6,698	35,353	89,761
Est. Average H.H. Income	\$212,617	\$228,364	\$188,277
2025 Avg. Daily Traffic Count	41,500 vehicles per day on 9th Street North		

The statement and figures presented herein, while not guaranteed, are secured from sources we believe authoritative. Subject to prior sale, lease, withdrawal and price change without notice.