



EQT | EXETER



1155 Kas Drive

Richardson, TX

Building Size: 90,800 SF | 73,836 SF of Industrial Space Available

VISIT EQTEXETER.COM

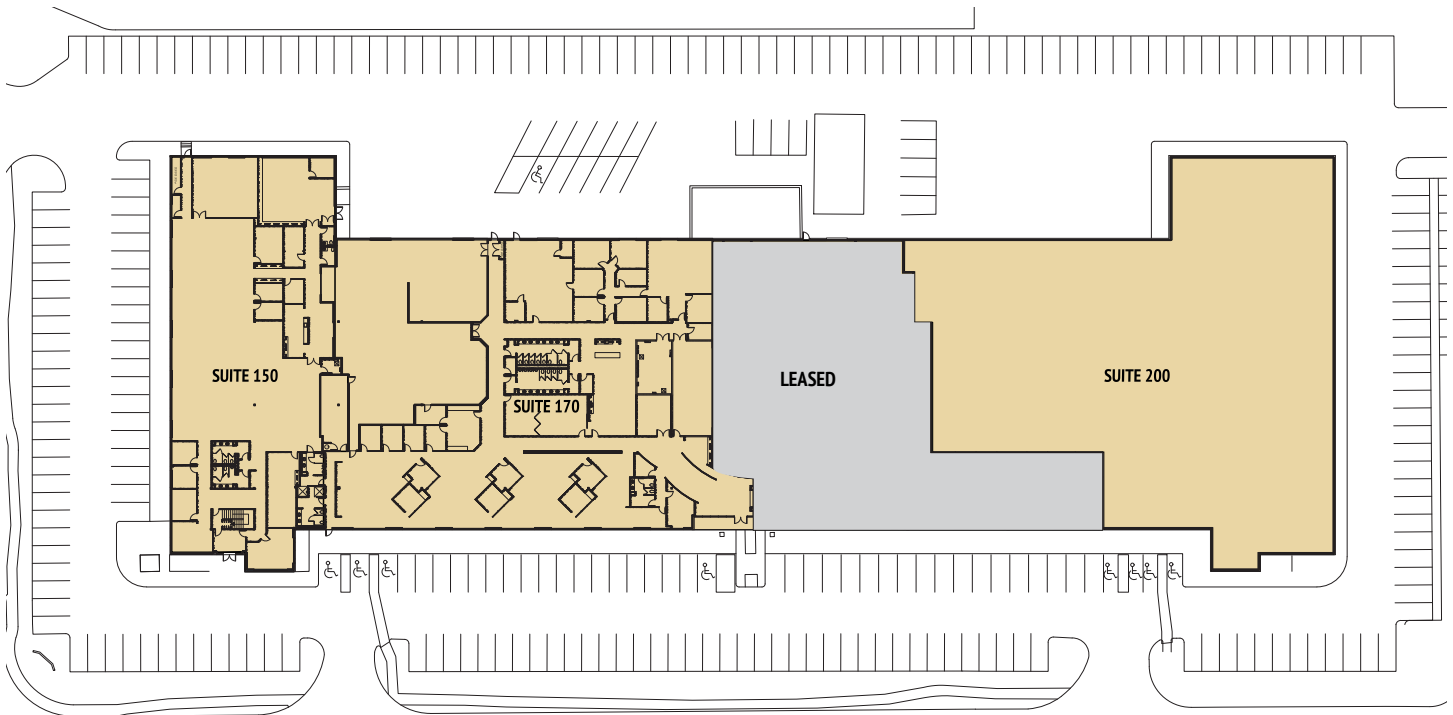
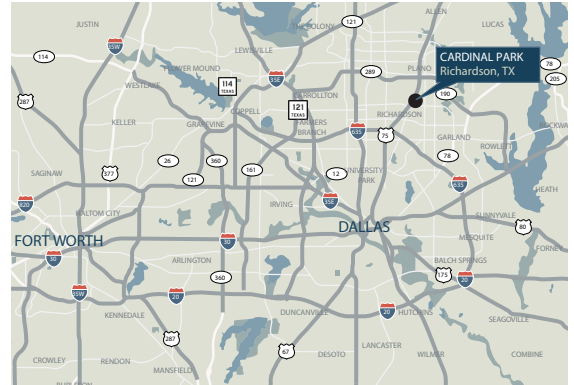
1155 Kas Drive

Richardson, TX

Building Size: 90,800 SF | Building Availability: 73,836 SF

Building Specifications

- Industrial space available
- 90,800 SF total building size
- 73,836 SF available size
 - Suite 150: 16,093 SF
 - Suite 170: 26,965 SF
 - Suite 200: 30,778 SF
- Minimum divisible 16,093 SF
- Grade level loading
- 24' clear height
- 3/1000 SF parking ratio
- 100% air conditioned warehouse and drop-ceiling production space
- Heavy power service

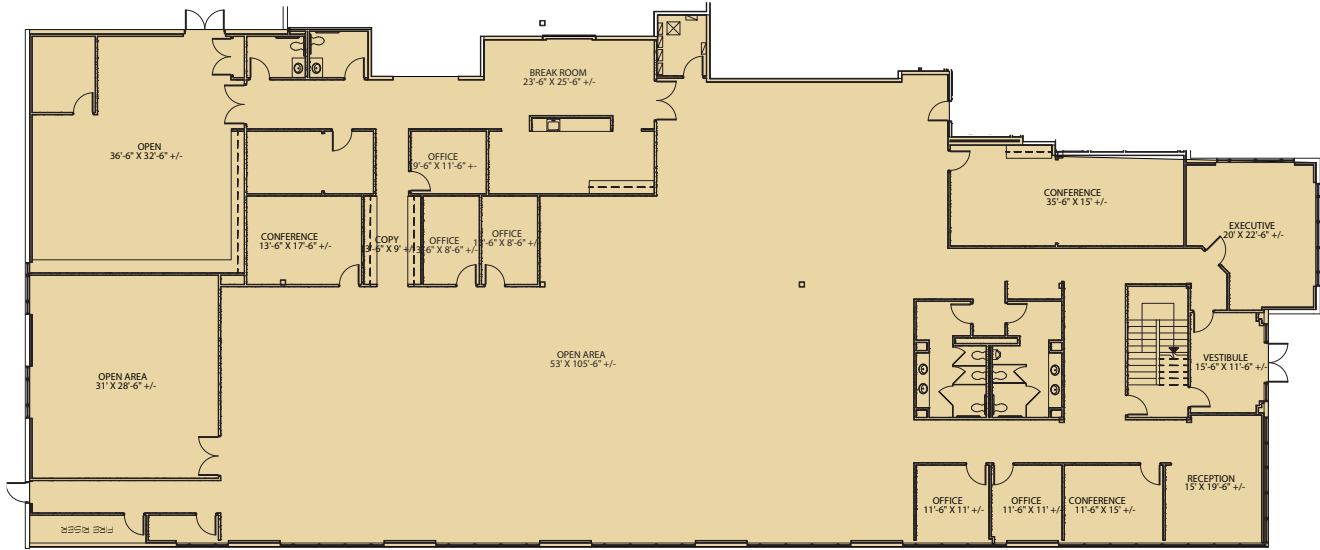


1155 Kas Drive

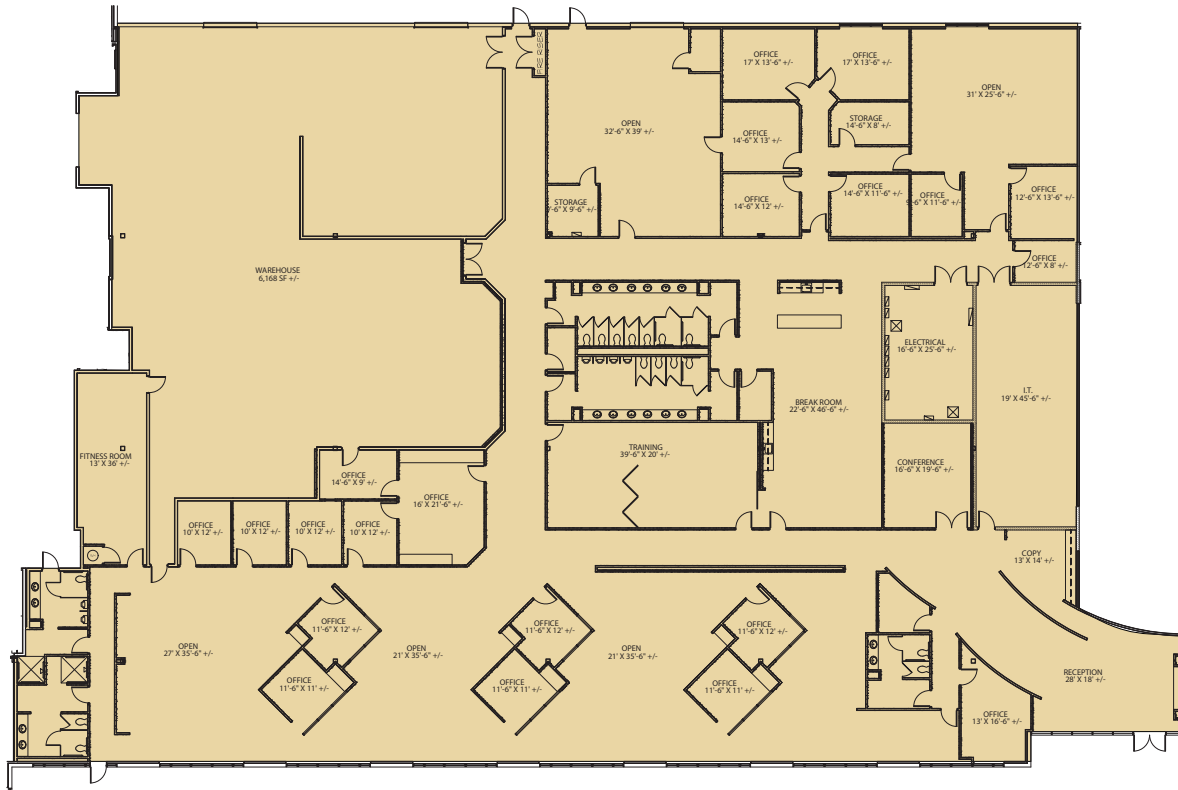
Richardson, TX

Building Size: 90,800 SF | Building Availability: 73,836 SF

SUITE 150



SUITE 170



1155 Kas Drive

Richardson, TX

Building Size: 90,800 SF | Building Availability: 73,836 SF

SUITE 200

