

CURVE DATA TABLE					
CURVE	LENGTH	RADIUS	CURVE	LENGTH	RADIUS
C1	18.85'	12.00'	C25	133.68'	465.00'
C2	14.35'	50.00'	C26	143.51'	465.00'
C3	21.79'	50.00'	C27	35.11'	465.00'
C4	80.85'	50.00'	C28	18.16'	465.00'
C5	52.17'	50.00'	C29	78.19'	465.00'
C6	86.70'	50.00'	C30	110.85'	535.00'
C7	9.63'	50.00'	C31	62.81'	325.00'
C8	36.14'	50.00'	C32	198.16'	325.00'
C9	18.85'	12.00'	C33	55.60'	25.00'
C10	106.46'	600.00'	C34	72.64'	50.00'
C11	191.16'	600.00'	C35	61.18'	50.00'
C12	65.06'	700.00'	C36	48.37'	50.00'
C13	108.82'	700.00'	C37	33.23'	50.00'
C14	100.09'	700.00'	C38	45.08'	25.00'
C15	73.26'	700.00'	C39	63.97'	65.00'
C16	17.80'	12.00'	C40	10.97'	12.00'
C17	17.80'	12.00'	C41	118.65'	215.00'
C18	108.85'	340.00'	C42	157.27'	285.00'
C19	26.91'	340.00'	C43	25.38'	12.00'
C20	42.66'	535.00'	C44	21.03'	25.00'
C21	186.56'	535.00'	C45	81.83'	50.00'
C22	35.65'	535.00'	C46	63.46'	50.00'
C23	44.71'	535.00'	C47	49.83'	50.00'
C24	49.72'	535.00'	C48	46.08'	50.00'

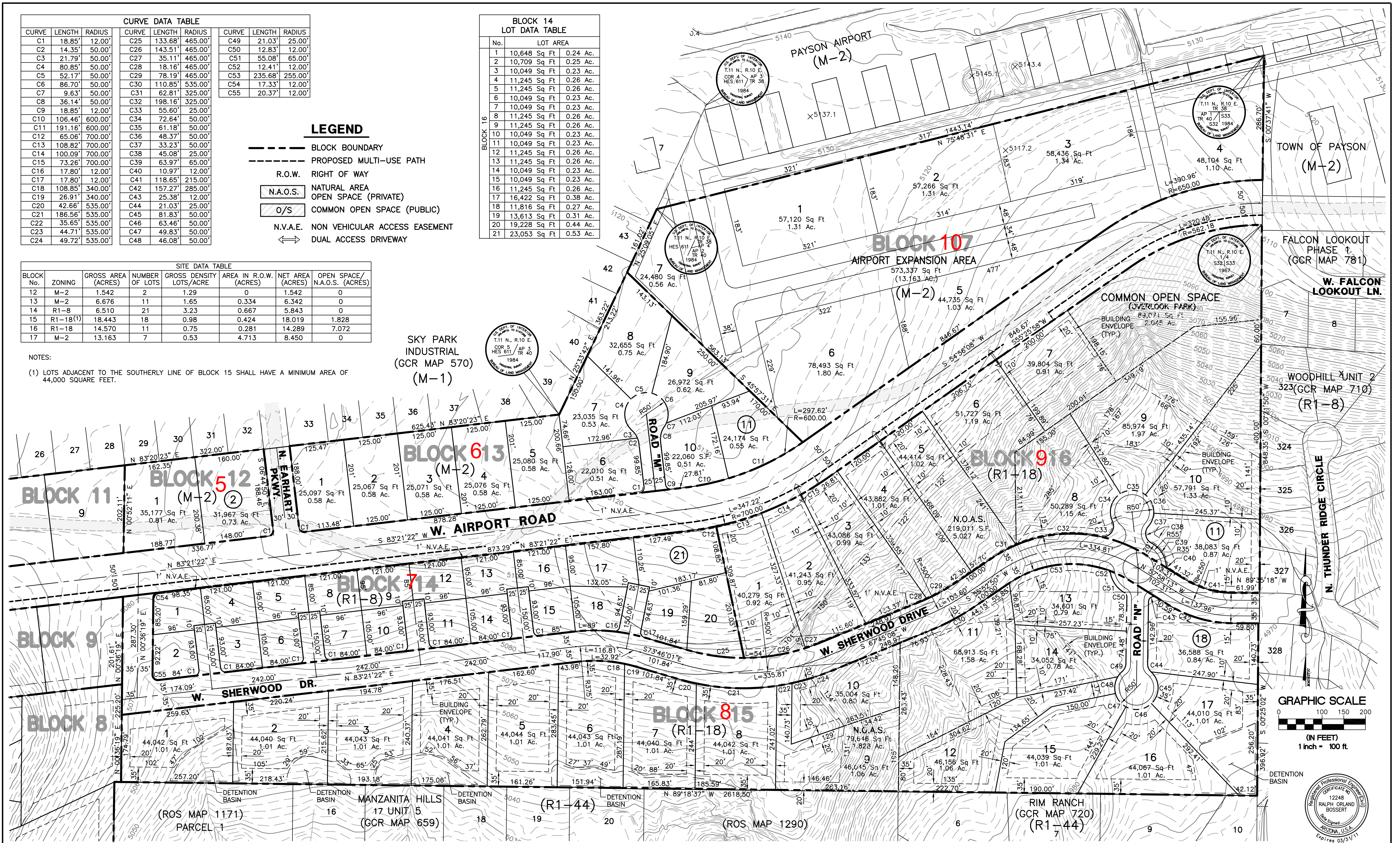
LEGEND

- BLOCK BOUNDARY
- - - - PROPOSED MULTI-USE PATH
- R.O.W. RIGHT OF WAY
- N.A.O.S. NATURAL AREA
- OPEN SPACE (PRIVATE)
- O/S COMMON OPEN SPACE (PUBLIC)
- N.V.A.E. NON VEHICULAR ACCESS EASEMENT
- ↔ DUAL ACCESS DRIVEWAY

BLOCK 14 LOT DATA TABLE		
No.	LOT AREA	
1	10,648 Sq Ft	0.24 Ac.
2	10,709 Sq Ft	0.25 Ac.
3	10,049 Sq Ft	0.23 Ac.
4	11,245 Sq Ft	0.26 Ac.
5	11,245 Sq Ft	0.26 Ac.
6	10,049 Sq Ft	0.23 Ac.
7	10,049 Sq Ft	0.23 Ac.
8	11,245 Sq Ft	0.26 Ac.
9	11,245 Sq Ft	0.26 Ac.
10	10,049 Sq Ft	0.23 Ac.
11	10,049 Sq Ft	0.23 Ac.
12	11,245 Sq Ft	0.26 Ac.
13	11,245 Sq Ft	0.26 Ac.
14	10,049 Sq Ft	0.23 Ac.
15	10,049 Sq Ft	0.23 Ac.
16	11,245 Sq Ft	0.26 Ac.
17	16,422 Sq Ft	0.38 Ac.
18	11,816 Sq Ft	0.27 Ac.
19	13,613 Sq Ft	0.31 Ac.
20	19,228 Sq Ft	0.44 Ac.
21	23,053 Sq Ft	0.53 Ac.

SITE DATA TABLE						
BLOCK No.	ZONING	GROSS AREA (ACRES)	NUMBER OF LOTS	GROSS DENSITY LOTS/ACRE	AREA IN R.O.W. (ACRES)	NET AREA (ACRES)
12	M-2	1.542	2	1.29	0	1.542
13	M-2	6.676	11	1.65	0.334	6.342
14	R1-8	6.510	21	3.23	0.667	5.843
15	R1-18(1)	18.443	18	0.98	0.424	18.019
16	R1-18	14.570	11	0.75	0.281	14.289
17	M-2	13.163	7	0.53	4.713	8.450

NOTES:
 (1) LOTS ADJACENT TO THE SOUTHERLY LINE OF BLOCK 15 SHALL HAVE A MINIMUM AREA OF 44,000 SQUARE FEET.



NO.	REVISIONS	DATE	BY	CHK.

Verde Engineering Group PLLC
 1109 North McLane Road
 Payson, Arizona 85541
 Ralph Bossert P.E. R.L.S.
 (928) 978-4345
 Dan Fitzpatrick P.E.
 (928) 595-2816

MONTEZUMA CASTLE LAND EXCHANGE
PAYSON, ARIZONA

JOB NO.	9016
DESIGNED BY:	RRH
DRAWN BY:	RRH
CHECKED BY:	ROB
APPROVED BY:	ROB
DATE:	05/12/10

REZONING SITE PLAN
BLOCKS 12-13-14-15-16 & 17

SCALE:	HORIZ: 1" = 100'
	CONT. INTERVAL = 2'
DRAWING NO.	SP4
SHEET NO. OF:	7 10

