

RETAIL FOR LEASE IN ICONIC DOWNTOWN BUILDING

MACY'S WEST

2 W. Flagler Street

Miami, FL 33131



PROPERTY HIGHLIGHTS

- Landmark Downtown Building
- Full Ground Floor Available—Up to 22,000 SF
- Upper Floors Available—30,000 SF Floor Plates
- Currently Set-Up as Multiple Retail Units
- Highly Visible Retail Corner, Heavy Foot Traffic
- Fantastic Street Exposure on S. Miami Avenue and W. Flagler Street
- Discounted Parking Available Nearby
- Located Directly Across the Street from Macy's, the Historical Museum of Southern Florida, the Gusman Center for Performing Arts, Bayside Marketplace, the James L. Knight Center and the Riverwalk



For Further Information, Please Contact:
(212) 244-7410 / ELLIOT ZEITUNE

elliott@aetnarealty.com

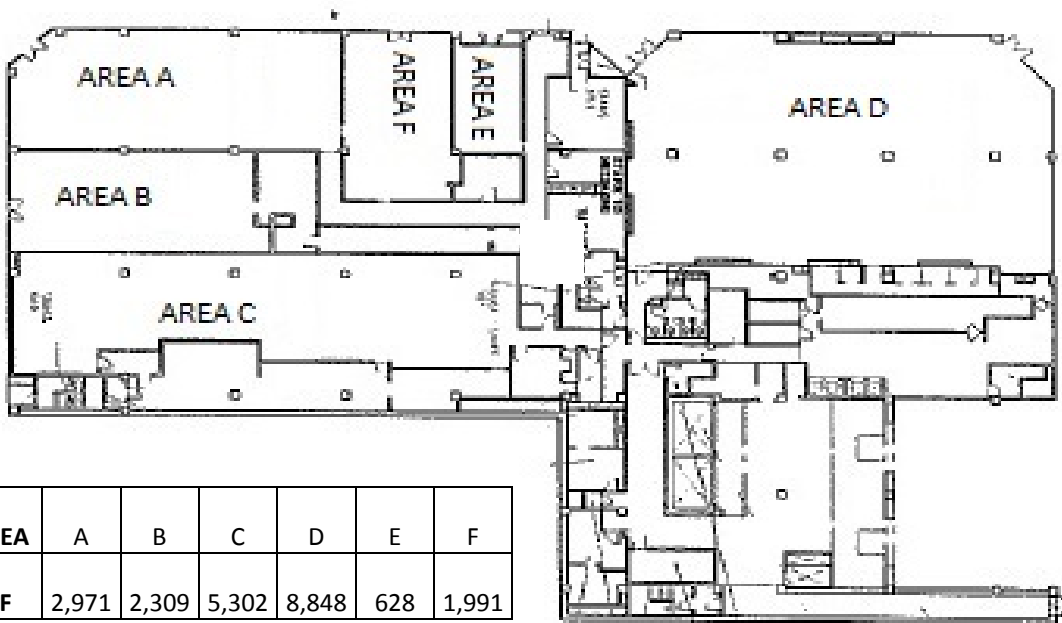
www.aetnarealty.com



AETNA REALTY

RETAIL FOR LEASE IN ICONIC DOWNTOWN BUILDING

2 W. Flagler Street, Miami, FL 33131



RETAIL FLOOR PLAN

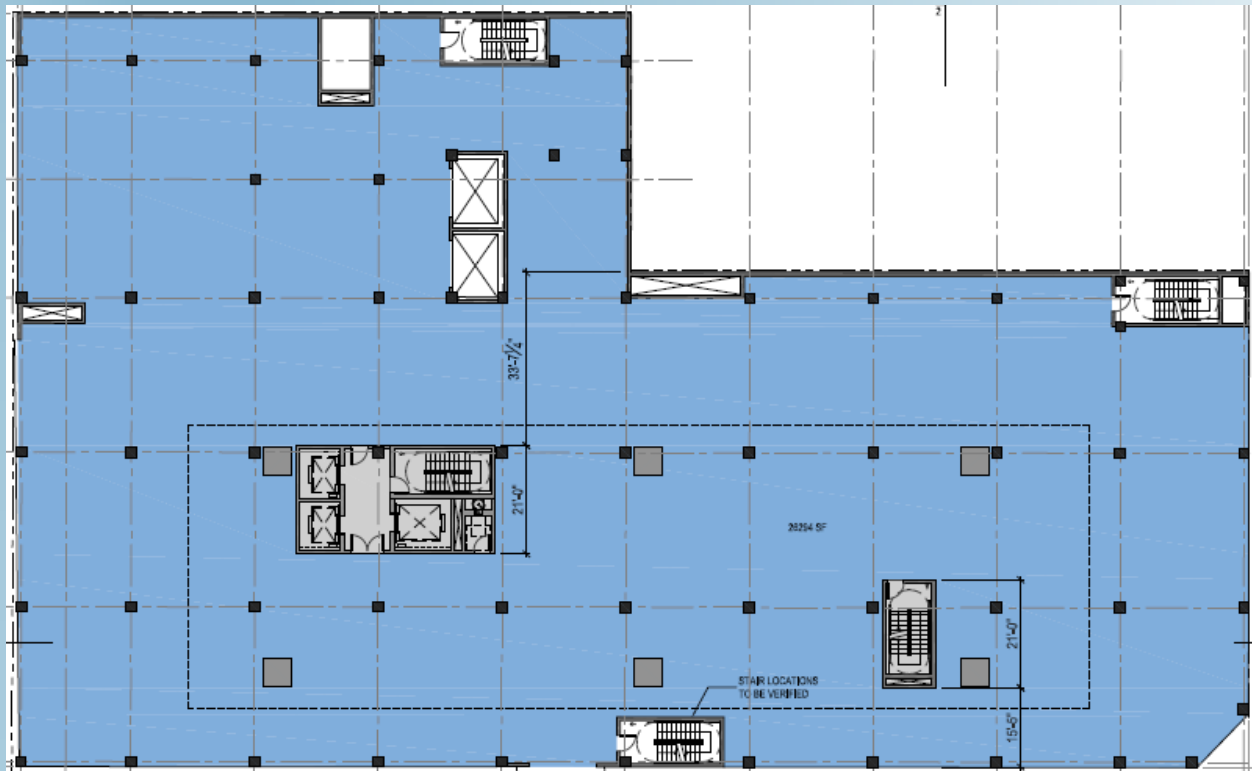
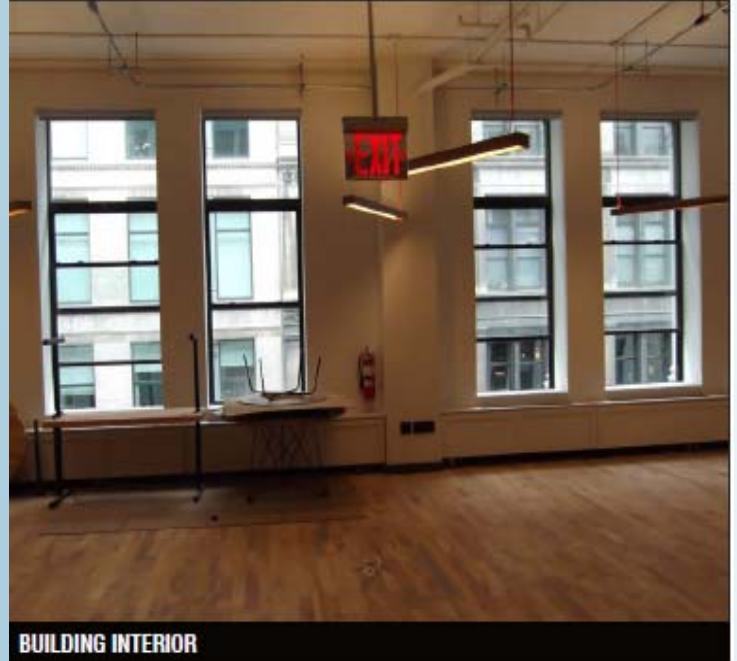
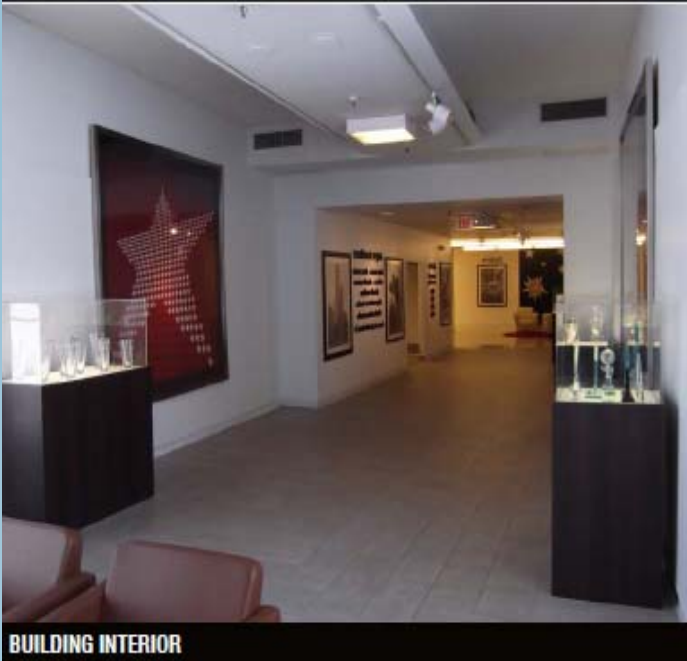
For Further Information, Please Contact:
(212) 244-7410 / ELLIOT ZEITUNE
elliott@aetnarealty.com
www.aetnarealty.com



AETNA REALTY

RETAIL FOR LEASE IN ICONIC DOWNTOWN BUILDING

2 W. Flagler Street, Miami, FL 33131



For Further Information, Please Contact:
(212) 244-7410 / ELLIOT ZEITUNE

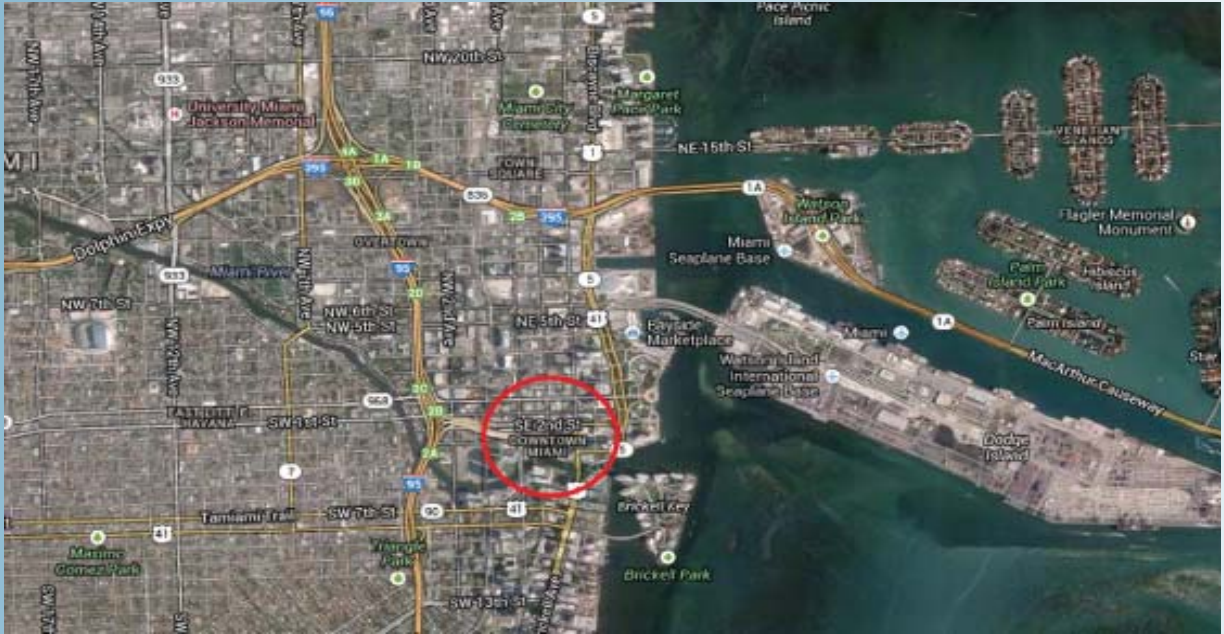
elliott@aetnarealty.com
www.aetnarealty.com



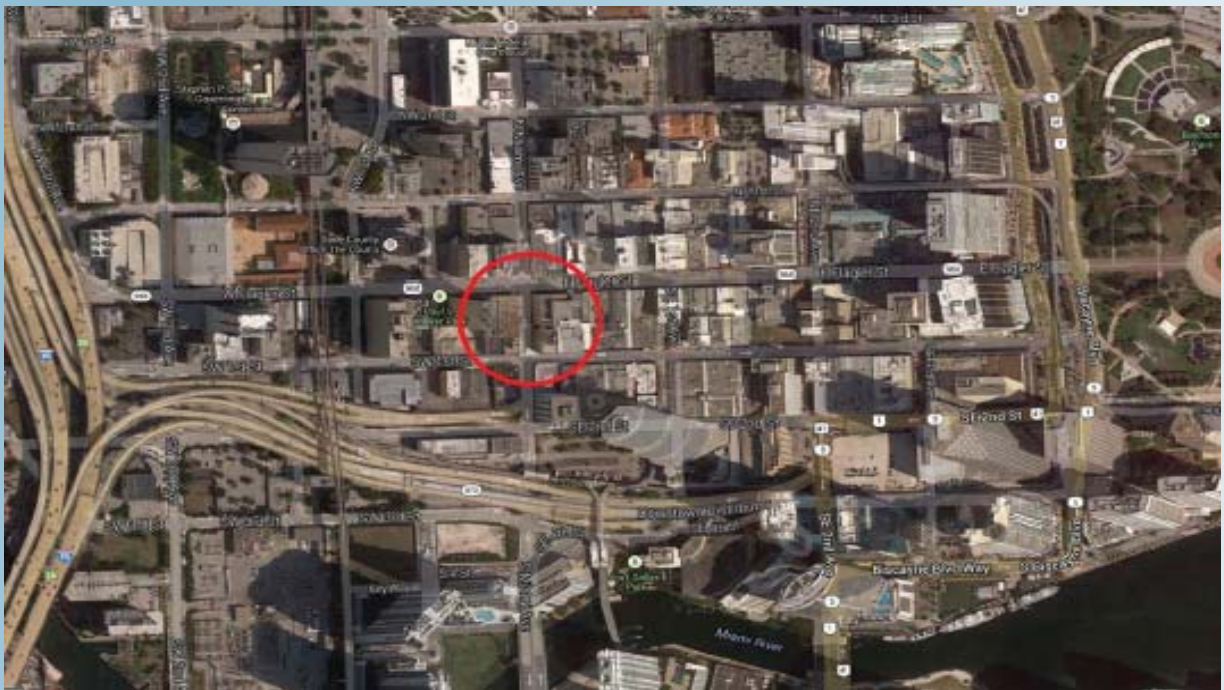
AETNA REALTY

RETAIL FOR LEASE IN ICONIC DOWNTOWN BUILDING

2 W. Flagler Street, Miami, FL 33131



LOCATION MAP



For Further Information, Please Contact:
(212) 244-7410 / ELLIOT ZEITUNE

elliott@aetnarealty.com
www.aetnarealty.com



AETNA REALTY