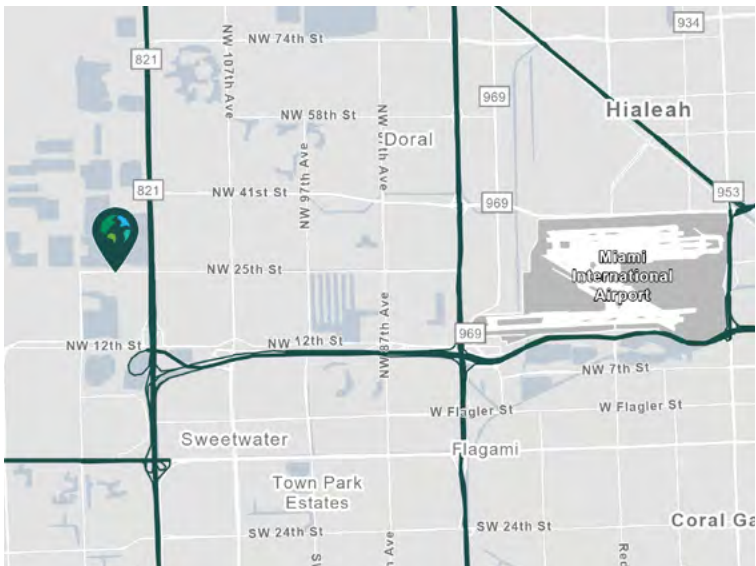


41,704 SF End-cap unit

**12200 NW 25th St
Miami, FL 33182**

Prologis Beacon Lakes 6



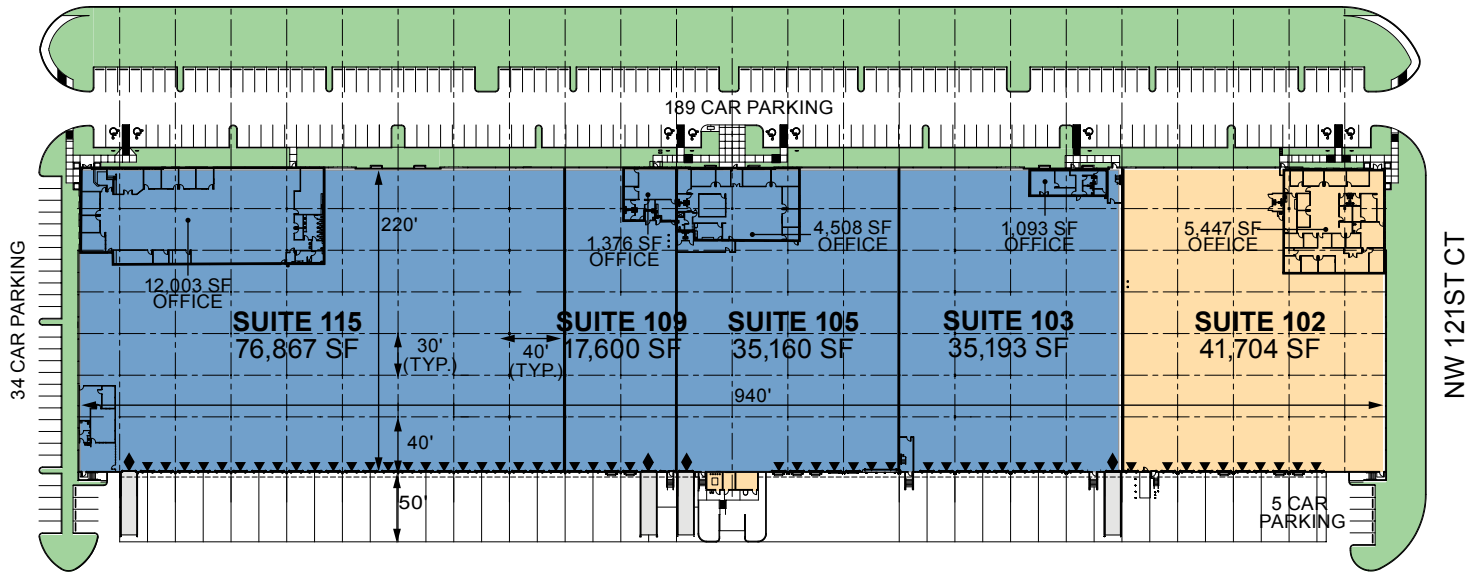
- Frontage on NW 127th Avenue where it meets NW 25th Street
- Unparalleled connectivity with direct access to 836 (Dolphin expressway), Florida's Turnpike and 826 (Palmetto expressway)
- Easy access to Miami International Airport and Port of Miami

Property Features

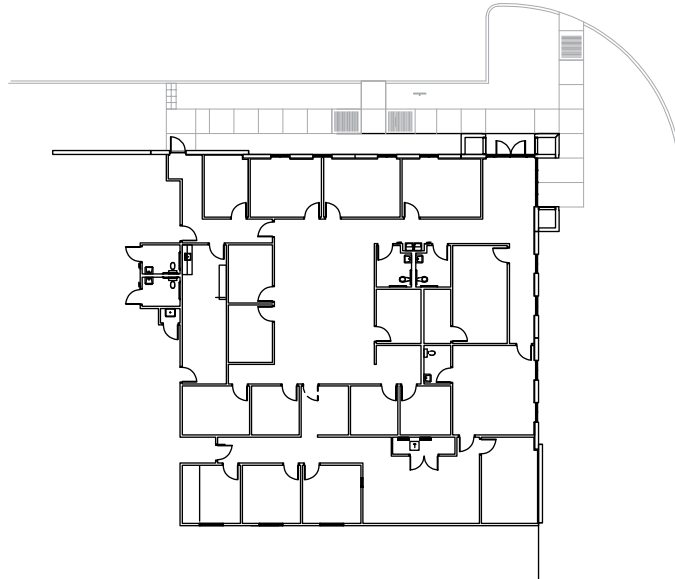
Available Date	6/1/2026
Available Space	41,704 SF
Office SF	5,447 SF
Clear Height	28'
Column Spacing	40' x 30'
Truck Court Depth	180'
Speed Bay	40'
Dock Doors	10
Edge of Dock Levelers	3
Drive-in Doors	1
Car Parking Spaces	43
Sprinkler	ESFR
Lighting	LED Motion Sensor



Unlock the full potential of your
warehouse with one strategic,
single-source partner.



SUITE 102 OFFICE
5,447 SF



LEGEND

- ▼ Dock position
- ◆ Drive-in door
- Available
- Leased
- Land



JLL
Brian Smith
smith.brian@jll.com
ph +1 305 960 8403

JLL
Audley Bosch
audley.bosch@jll.com
ph +1 305 960 8404

JLL
Ana Rivera
ana.rivera@jll.com
ph +1 305 960 8427

Prologis
Barbara Mantecon
bmantecon@prologis.com
ph +1 954 316 1777
prologis.com