



# JOHNSTON-WILLIS MEDICAL OFFICE

1011 JOHNSTON WILLIS DR, NORTH CHESTERFIELD, VA 23235

## NOW LEASING!



CLASS A MEDICAL OFFICE BUILDING ADJACENT TO JOHNSTON-WILLIS HOSPITAL

### PROPERTY FEATURES

- ▶ **Class A Medical office building constructed in 2018**
- ▶ Two (2) story, 40,000 SF brick medical office building located adjacent to HCA Johnston-Willis Hospital
- ▶ Excellent visibility on Midlothian Turnpike (US Route 60)
- ▶ Generous tenant improvement allowance
- ▶ Flexible lease terms
- ▶ Monument signage available
- ▶ 52,000+ vehicles per day

### PROPERTY FEATURES

| Space Available | Medical Office | 1,300 SF – 2,100 SF |
|-----------------|----------------|---------------------|
|-----------------|----------------|---------------------|

Nearby:



Johnston-Willis Hospital, Gastrointestinal Specialists, Neurosurgical Associates, Dermatology Associates of VA, PIVOT Physical Therapy, Target, Home Depot, Truist Bank, Fresh Market, Kohl's, CVS, Burlington, Carrabba's Italian Grill, Panera, CAVA, Mellow Mushroom, Chick-fil-A, Office Depot, Chesterfield Towne Center, Tazza Kitchen, Noodles & Co.



**Johnston-Willis Hospital**  
HCA  
A CAMPUS OF CJW MEDICAL CENTER

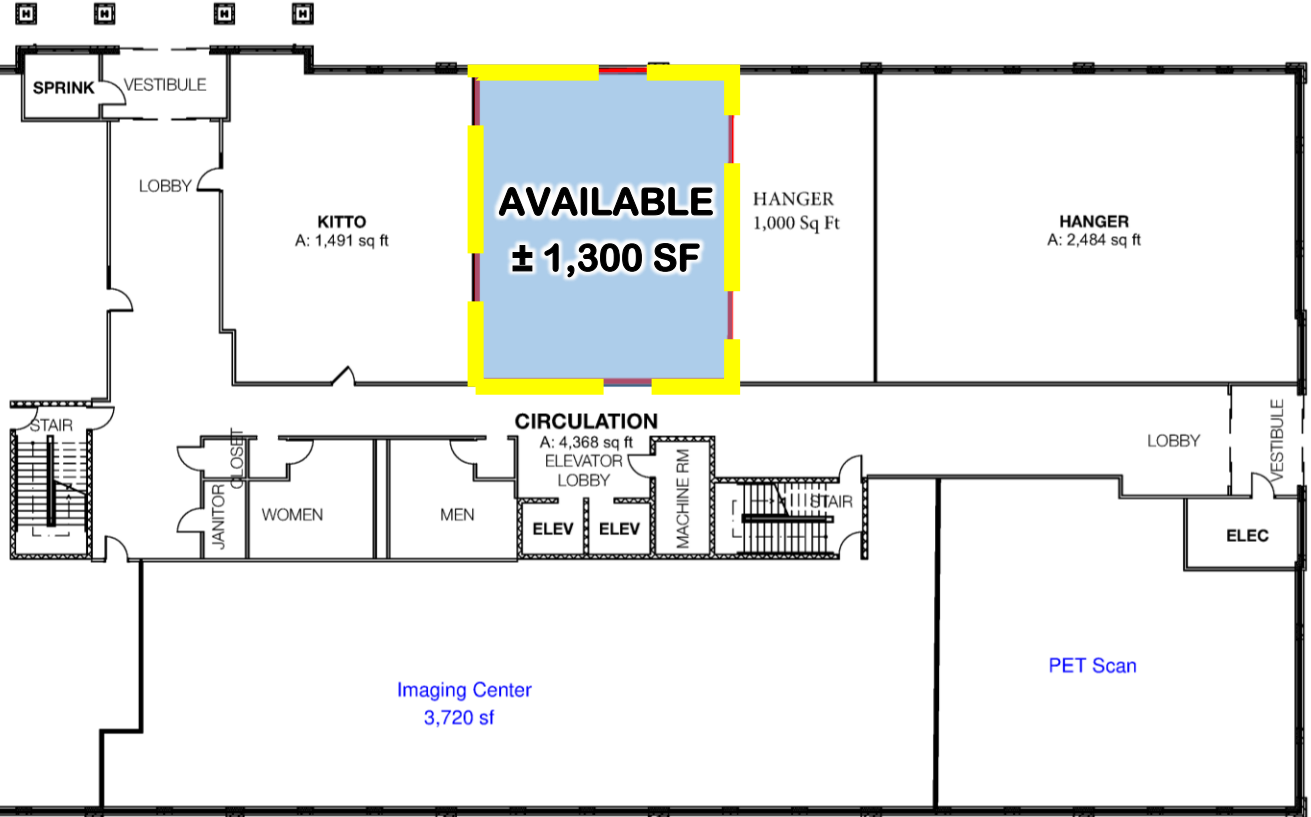
### PROPERTY CONTACT

Sean Eichert, (804) 419-2295  
seichert@plusmgt.com, www.plusmgt.com

Plus Management, LLC  
13281 River's Bend Blvd, Suite 201, Chester, VA 23836

# FIRST FLOOR

**NEURO SURGICAL**  
ASSOCIATES, P.C.



# SECOND FLOOR

