

CLASS A OFFICE FOR LEASE

COMPETITIVE “SUBLEASE RATES” FOR DIRECT LEASES!

GROVE CREEK II

2168 West Grove Pkwy, Pleasant Grove, UT 84062



CBRE

PROPERTY FEATURES

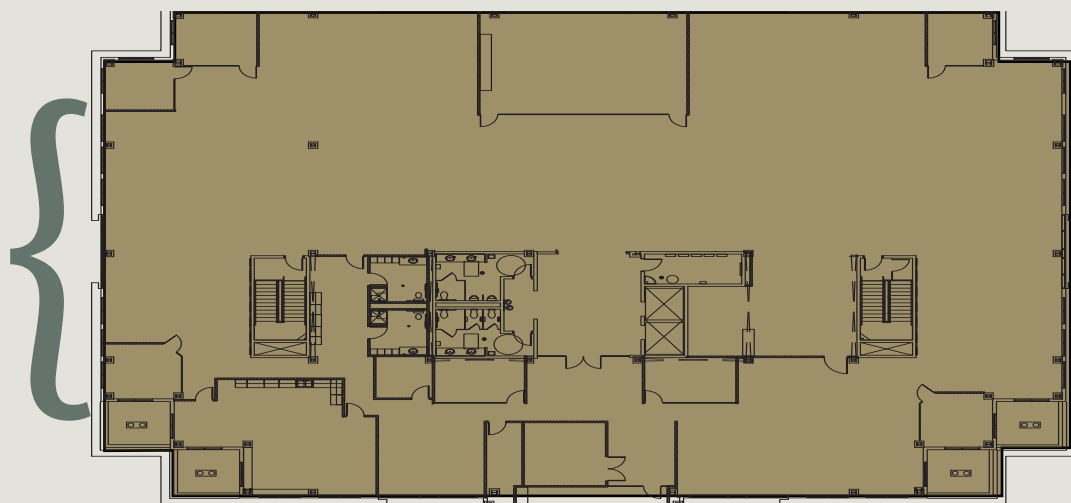
- + Parking Ratio: 5/1,000 SF
- + Great freeway and major highway access
- + Fiber provided by CenturyLink and Integra
- + Full third floor available
- + Accessible to Utah County and Salt Lake County employment pools
- + Four EV car charging stations available
- + Shower and changing rooms onsite
- + Bike storage with lockers in building

LEASE RATE: \$22.00-24.00/RSF, FULL SERVICE

AVAILABLE:

Third Floor:
19,322 RSF

THIRD FLOOR



PROPERTY PHOTOS



GROVE CREEK II

2168 West Grove Pkwy, Pleasant Grove, UT 84062

www.cbre.com/slc



CONTACT

Eric Smith

Senior Vice President
+1 801 869 8008
eric.smith@cbre.com

Kreg Peterson

First Vice President
+1 801 869 8092
kreg.peterson@cbre.com

Laurie Adair

First Vice President
+1 801 869 8009
laurie.adair@cbre.com

CBRE

© 2023 CBRE, Inc. All rights reserved. This information has been obtained from sources believed reliable, but has not been verified for accuracy or completeness. You should conduct a careful, independent investigation of the property and verify all information. Any reliance on this information is solely at your own risk. CBRE and the CBRE logo are service marks of CBRE, Inc. All other marks displayed on this document are the property of their respective owners, and the use of such logos does not imply any affiliation with or endorsement of CBRE. Photos herein are the property of their respective owners. Use of these images without the express written consent of the owner is prohibited.