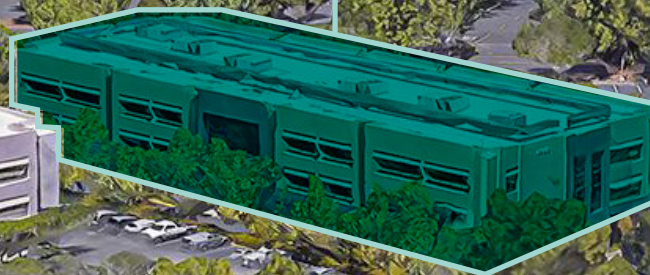


5700 Stoneridge Mall Road

PLEASANTON, CA

5700 STONERIDGE
MALL ROAD



NEWMARK

PROPERTY OVERVIEW

- Walking distance to BART - 45 minutes to Financial District
- Walking distance to Stoneridge Mall, Cheesecake Factory and PF Chang's.
- Proximity to retail, restaurants and hotels
- Strong local based ownership
- Building recently enhanced with Comcast fiber, Comcast cable and Wi-Line.
- Monument and eyebrow signage available
- Direct access to Interstate 580 and 680
- Ample parking: 3.5/1,000
- Asking rate: \$2.20 FS

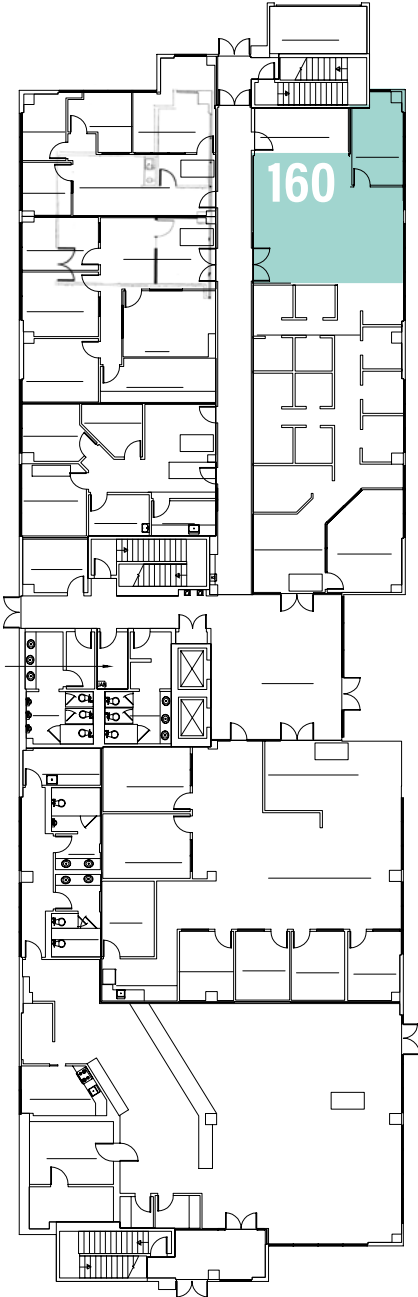
CURRENT AVAILABILITIES

SUITE	SIZE	AVAILABLE	COMMENTS
160	±866 SF	Available Now	Great ground floor location, reception area, two (2) private offices, high ceilings
225	±1,127 SF	Available Now	Reception area, four (4) private offices
275	±969 SF	Available Now	Reception area, one (1) private offices
340	±4,286 SF	Available Now	Divisible to 2,000 SF, Six (6) offices, breakroom, Storage room, Large reception, Bullpen

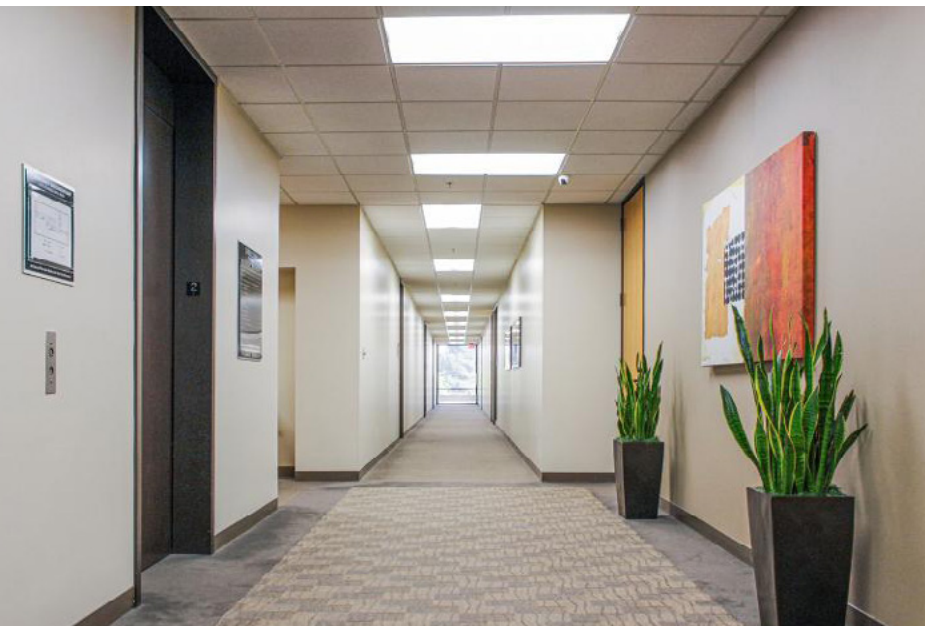


AVAILABILITIES

1ST FLOOR



PROPERTY PHOTOS



VICINITY MAP



CVS

TARGET

ROSS

SPROUTS

SAFEWAY

AC
HOTELS
MARRIOTT

BART
bo

DOUBLETREE

580

580

680

JCPenney

Cheesecake
Factory



macy's

PF CHANGS

5700 Stone Ridge
Mall Road

KAISER
PERMANENTE



EXCLUSIVELY OFFERED BY

JUSTIN GRILLI

Senior Managing Director

925.997.1353

justin.grilli@nmrk.com

CA Lic# 01410373

NELSON ROBERTS

Associate

925.210.8741

nelson.roberts@nmrk.com

CA Lic# 02109703

The distributor of this communication is performing acts for which a real estate license is required. The information contained herein has been obtained from sources deemed reliable but has not been verified and no guarantee, warranty or representation, either express or implied, is made with respect to such information. Terms of sale or lease and availability are subject to change or withdrawal without notice.