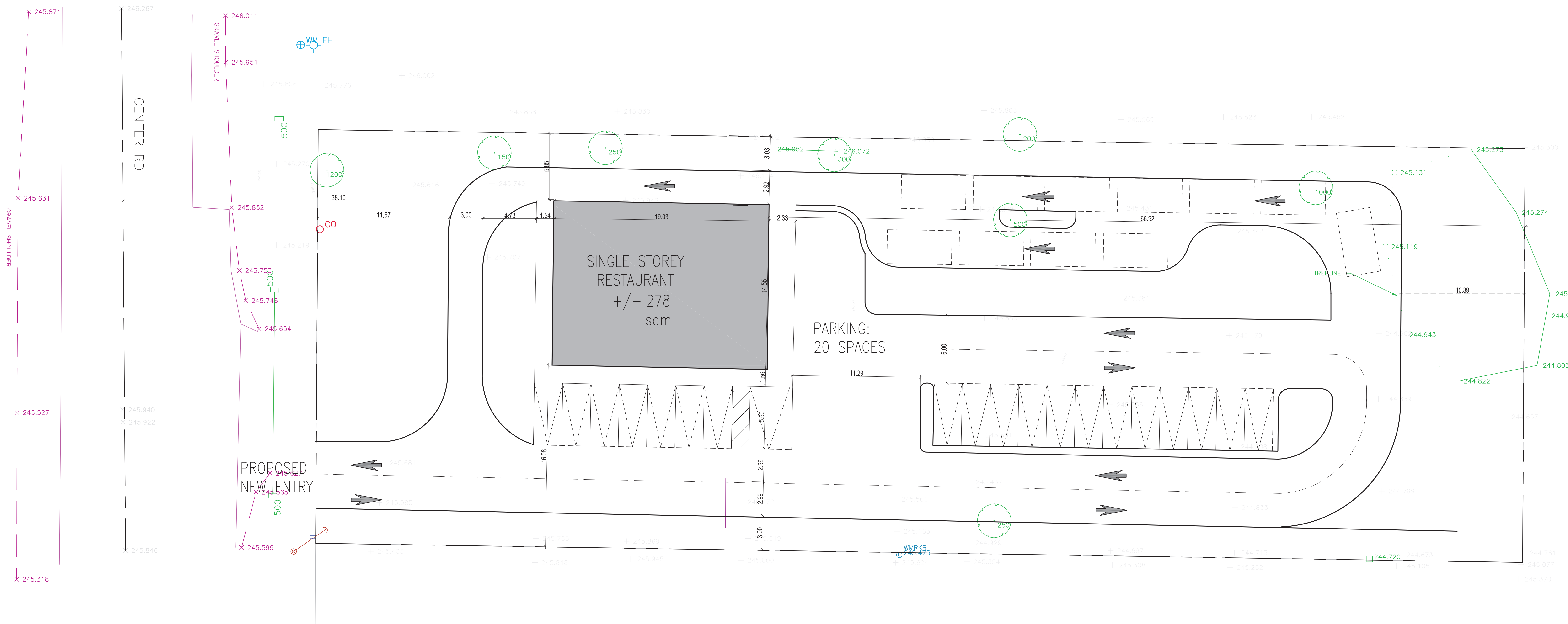
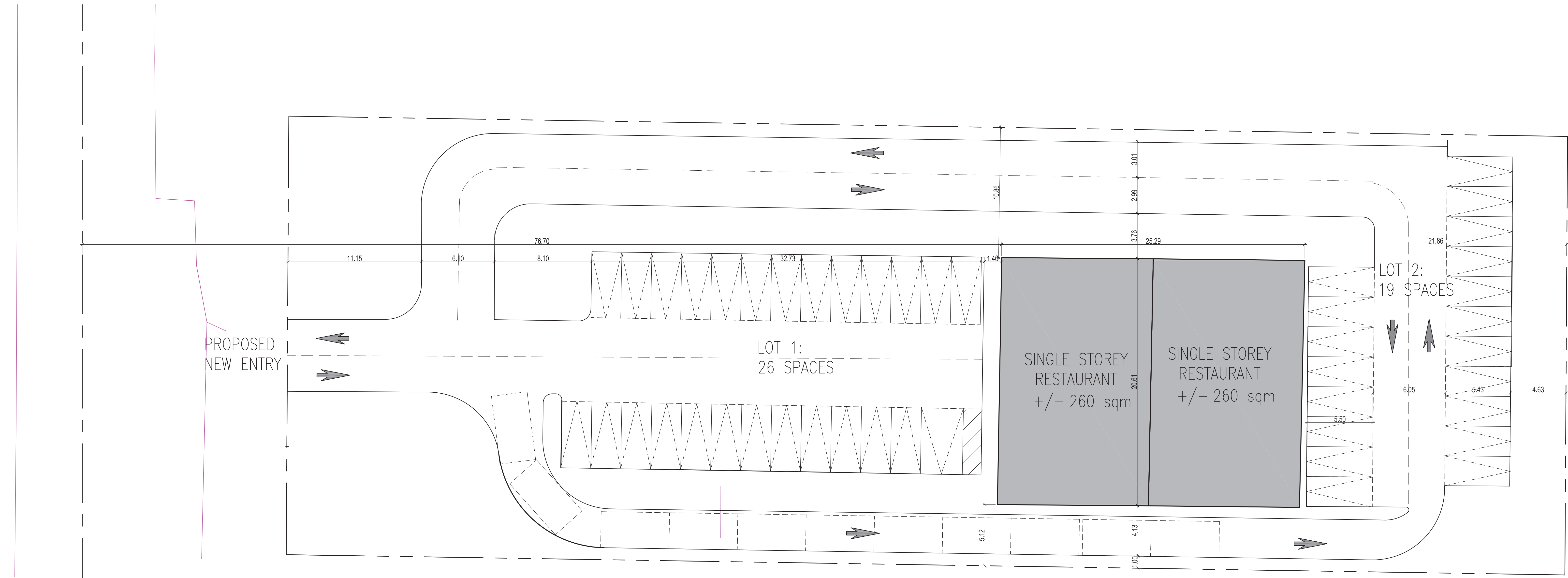


NO.	DESCRIPTION	DATE
1	ISSUED FOR CLIENT REVIEW	2022-01-27



CONCEPT LAYOUT 1: SINGLE STOREY RESTAURANT WITH DRIVE THRU



CONCEPT LAYOUT 2: TWO SINGLE STOREY RESTAURANTS WITH DRIVE THRU

PRELIMINARY

CONTRACTOR MUST CHECK - VERIFY ALL DIMENSIONS ON SITE.
DO NOT SCALE DRAWINGS.
ALL DRAWINGS, SPECIFICATIONS AND RELATED DOCUMENTS ARE THE
COPYRIGHT PROPERTY OF RED STUDIO INC. ARCHITECTS AND MUST BE
RETURNED UPON REQUEST. REPRODUCTIONS OF DRAWINGS,
SPECIFICATIONS AND RELATED DOCUMENTS IN PART OR IN WHOLE IS
FORBIDDEN WITHOUT THE WRITTEN PERMISSION OF RED STUDIO INC.
ARCHITECTS

THE DRAWINGS ARE NOT TO BE USED FOR CONSTRUCTION UNTIL
PERMISSION HAS BEEN GRANTED BY THE ARCHITECT OR THE DRAWING
IS ISSUED AS ISSUED FOR CONSTRUCTION.

PROJECT INFORMATION
28636 CENTRE ROAD
STRATHROY, ONTARIO

DRAWING TITLE
PROPOSED SITE PLAN

PROJECT NO.: 21-4281
DATE: 2021.01.27
SCALE: 1/32" = 1'-0"
DRAWN BY: AS
REVIEWED BY: AS