



STEELS POINTE DR.

STOW, OH 44224

Jerry Fiume, SIOR, CCIM
Managing Director
234.231.0235
jerry.fiume@svn.com

Aaron Davis
Associate Advisor
330.221.7297
aaron.davis@svn.com

LOT 1 LOT 2

Steels Corners Rd

E Steels Corners Rd

Executive Summary



OFFERING SUMMARY

Sale Price: \$Make Offer

Lot Size: 1.0 - 1.4 Acres

Zoning: C8 Office/Service

PROPERTY OVERVIEW

Lot 1 - 1.02 acres: \$Make Offer

Lot 2 - 1.40 Acres \$Make Offer

PROPERTY HIGHLIGHTS

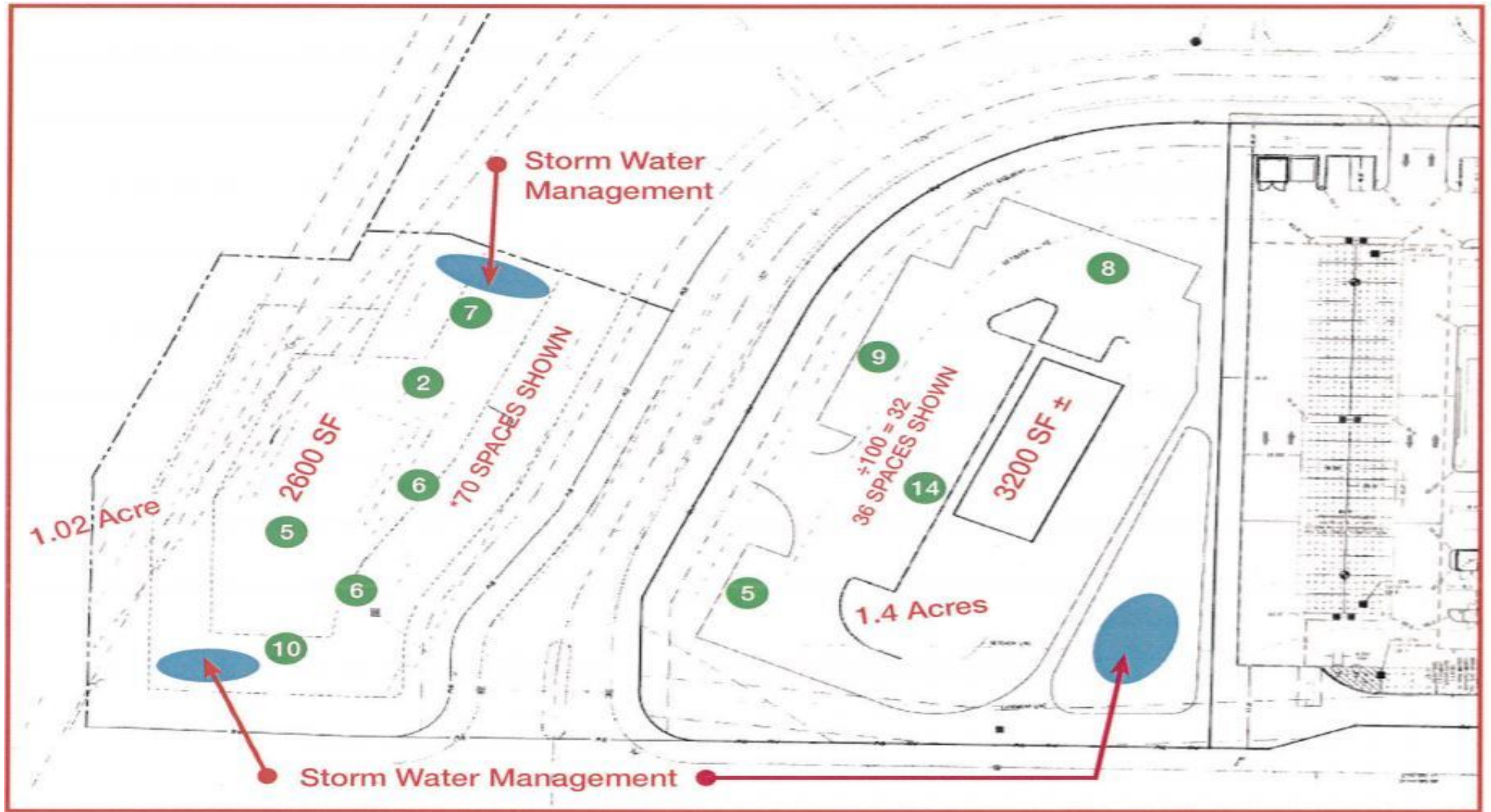
- Courthouse Commons is a newly developed office retail park located at Stoils Corner Road and State Route 8 interchange in Ohio. With visibility from the Route 8 expressway, these lots are strategically located next to the Stow Municipal Courthouse, Fairfield, Staybridge Hotel and the recently completed 40,000 SF Clunk Office Building in a growing area of Northeast Ohio.
- C8 Zoning District.
- One of the Fastest growing area in northern Summit County.

Land Lots

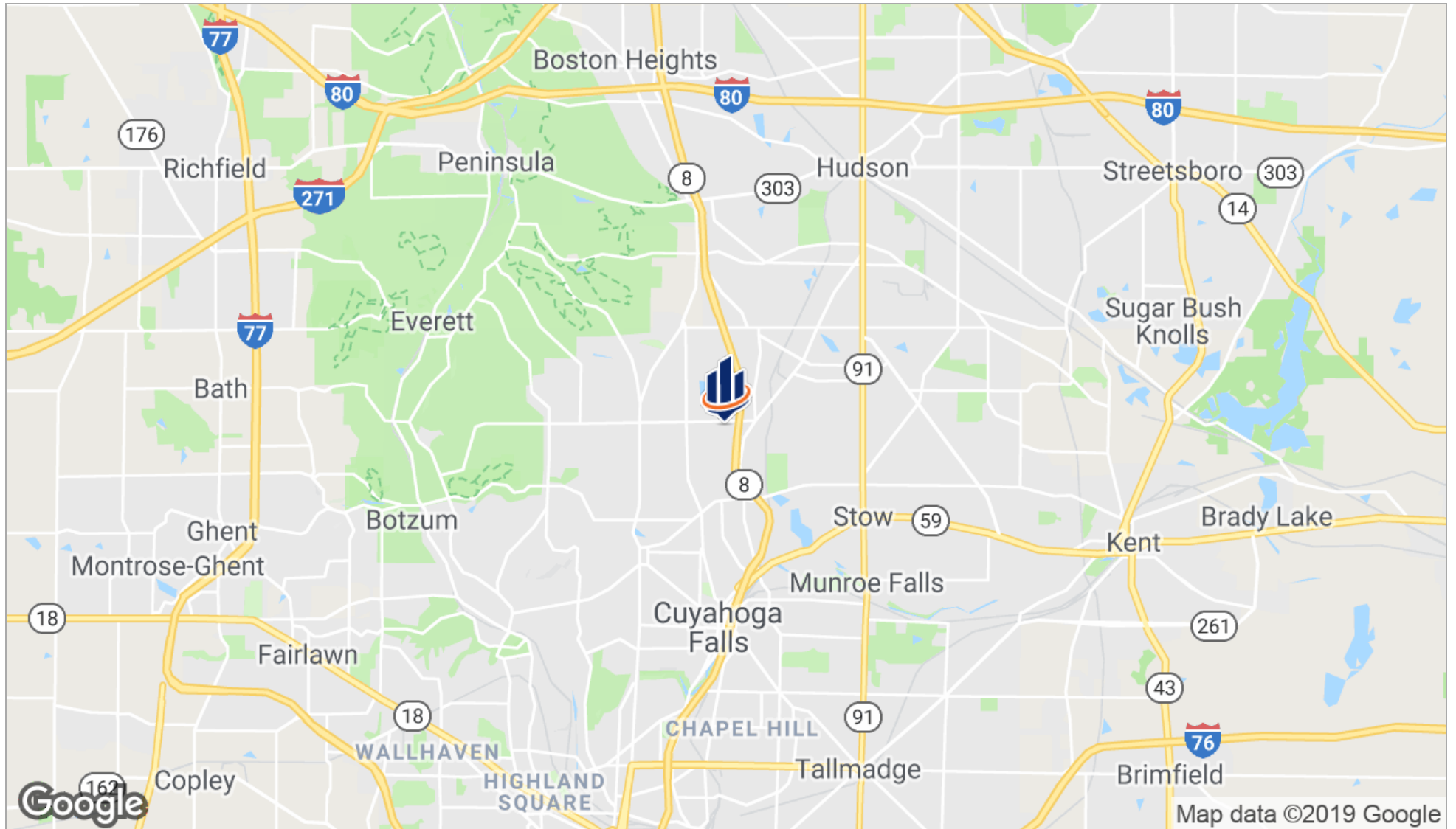


Lot #	Size [AC]	Price/Acre	Sale Price	Status	Description
	1.02	\$637,254	\$650,000	Available	Lot ideally suitable for bank branch, deli, restaurant (permit for liquor license available), day care, personal care facility, etc.
	1.4	\$535,714	\$750,000	Available	Lot ideally suitable for bank branch, deli, restaurant (permit for liquor license available), day care, personal care facility, etc.

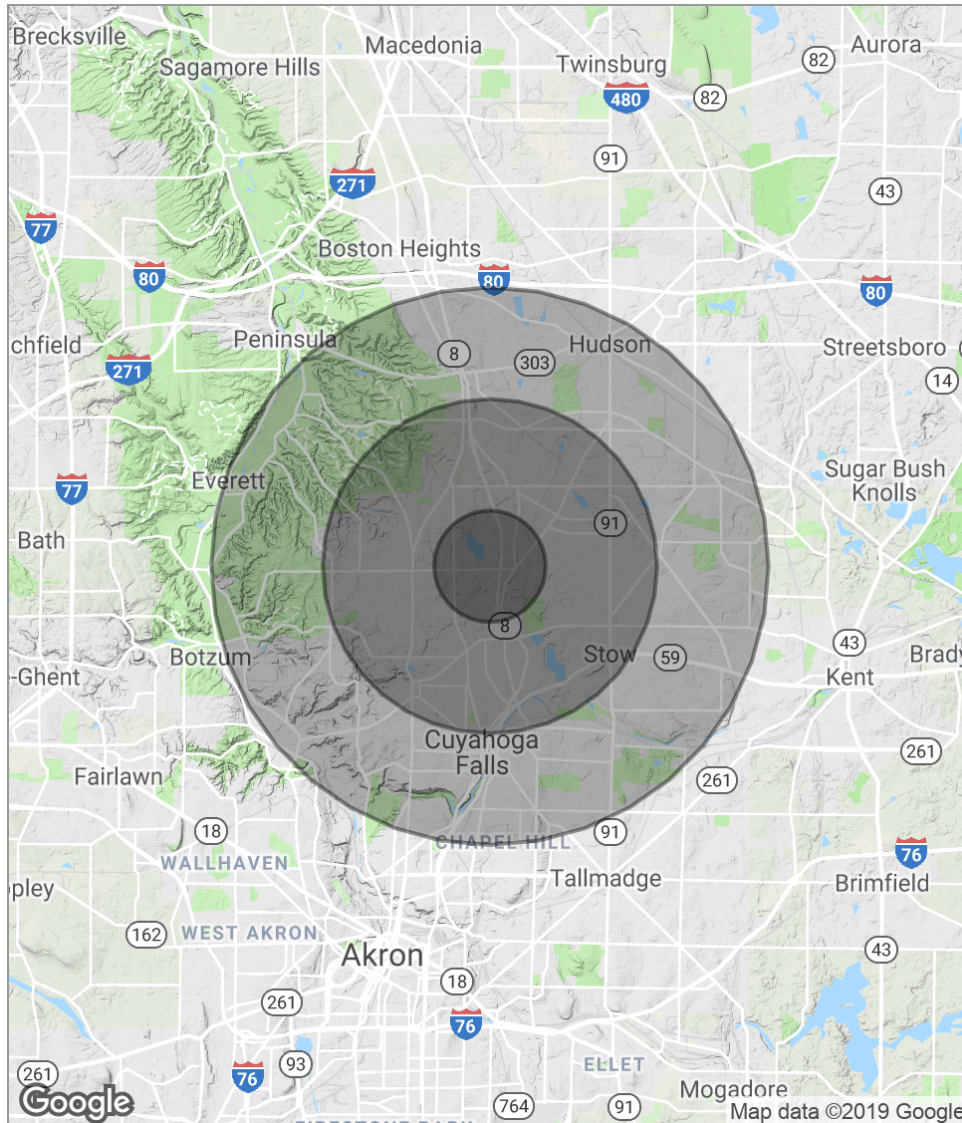
Additional Photos



Location Maps



Demographics Map



POPULATION

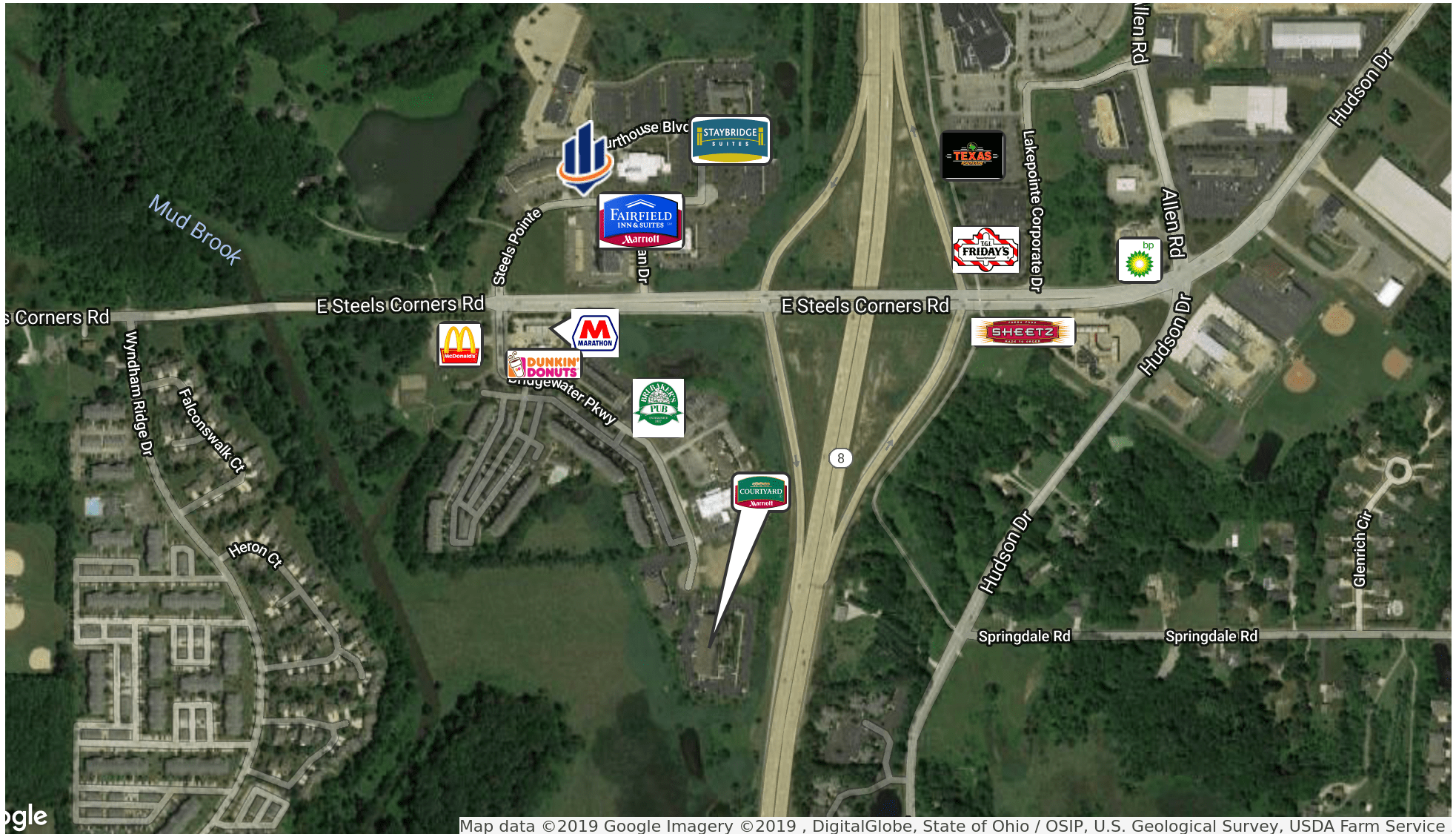
	1 MILE	3 MILES	5 MILES
Total population	3,542	45,705	130,476
Median age	33.7	39.6	39.3
Median age (male)	34.2	38.7	38.0
Median age (Female)	31.9	40.7	40.9

HOUSEHOLDS & INCOME

	1 MILE	3 MILES	5 MILES
Total households	1,547	19,251	55,581
# of persons per HH	2.3	2.4	2.3
Average HH income	\$68,564	\$70,074	\$65,134
Average house value	\$184,415	\$178,145	\$188,144

** Demographic data derived from 2010 US Census*

Retailer Map



Map data ©2019 Google Imagery ©2019 , DigitalGlobe, State of Ohio / OSIP, U.S. Geological Survey, USDA Farm Service.