



ARLINGTON SQUARE

4401 N FAIRFAX DRIVE | ARLINGTON, VA 22203



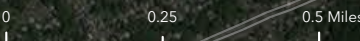
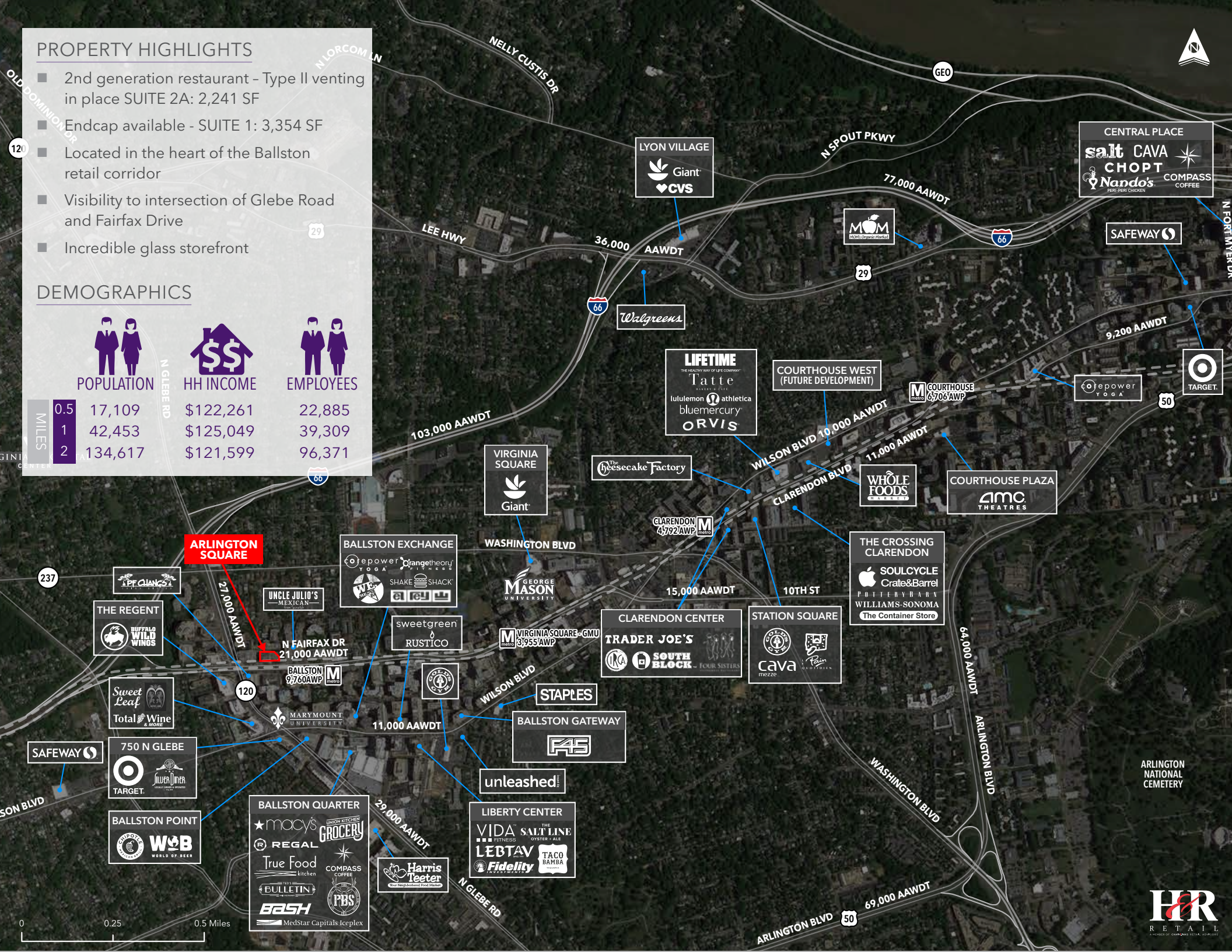
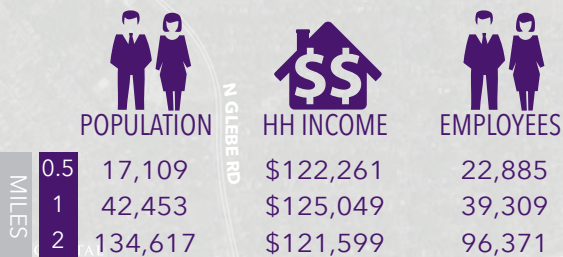
**Brookfield
Properties**

2,241 SF & 3,354 SF SPACE AVAILABLE

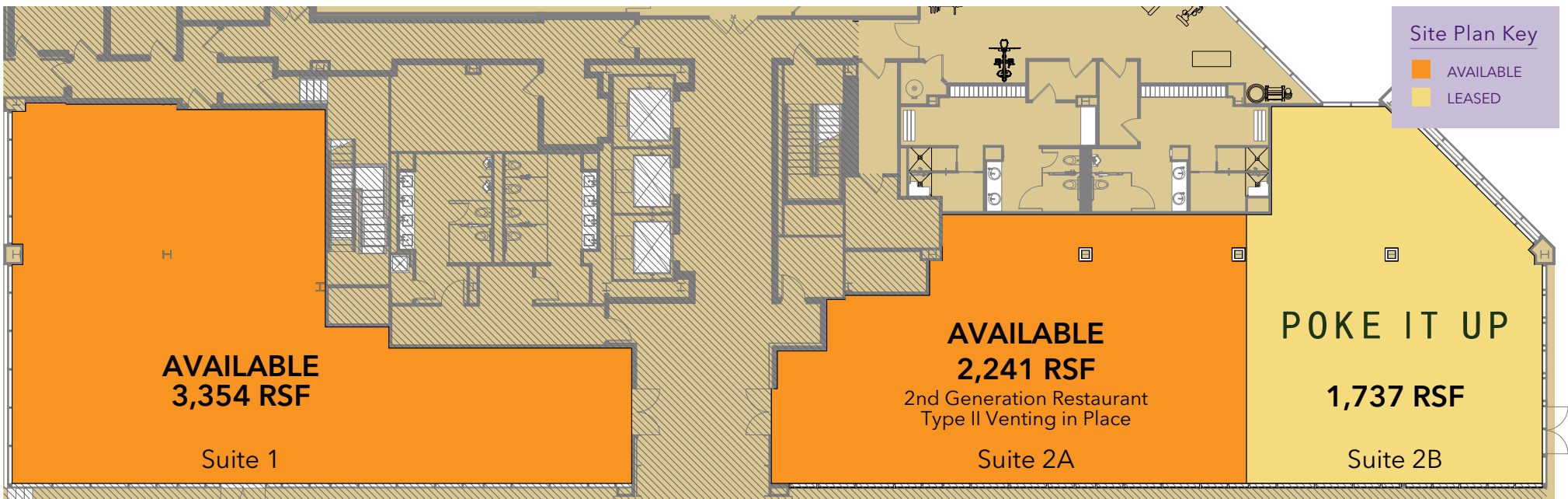
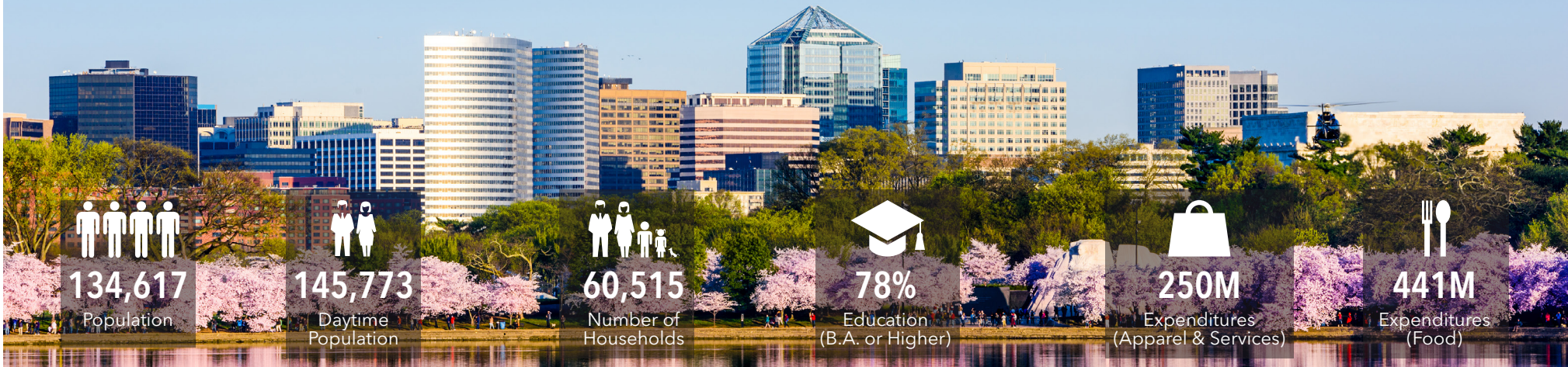
PROPERTY HIGHLIGHTS

- 2nd generation restaurant - Type II venting in place SUITE 2A: 2,241 SF
- Endcap available - SUITE 1: 3,354 SF
- Located in the heart of the Ballston retail corridor
- Visibility to intersection of Glebe Road and Fairfax Drive
- Incredible glass storefront

DEMOGRAPHICS



The Rosslyn-Ballston corridor in Arlington County has the highest concentration of millennials and one of the most educated workforces in the nation.





Please Contact

Bradley Buslik
240.482.3609
bbuslik@hrretail.com

Sean Harcourt
240.482.3606
sean@hrretail.com

3 Bethesda Metro Center,
Suite 620
Bethesda, MD 20814