

2301
W COMMERCE ST.
Dallas, TX 75212

174,949 SF
FOR SALE



RICH YOUNG, JR., SIOR
972-236-7645
RICHJr@RICHYOUNGCOMPANY.COM



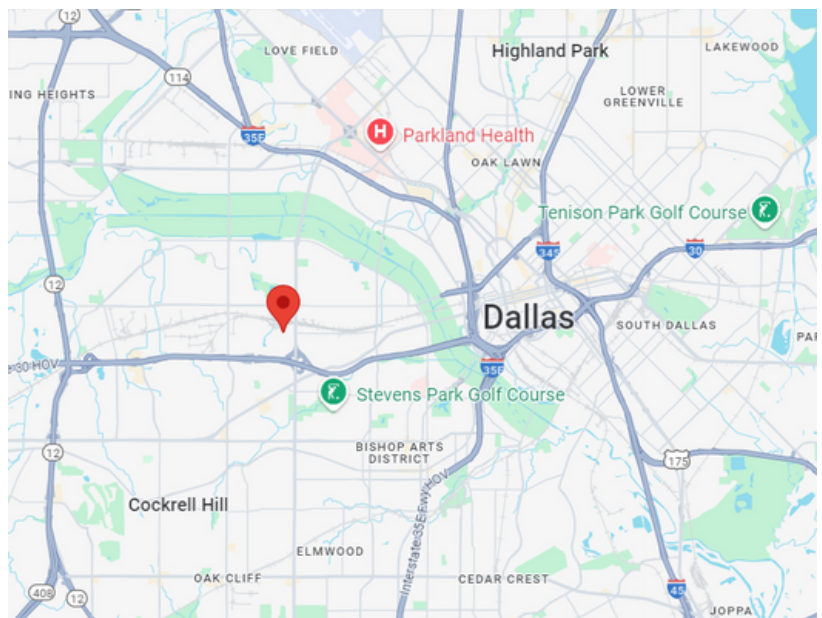
5710 LBJ FREEWAY | SUITE 150
DALLAS, TEXAS 75240
972-236-7645

2301 W COMMERCE ST. Dallas, TX 75212

174,949 SF
FOR SALE

PROPERTY HIGHLIGHTS

- 22' Clear Height
- 3,877 SF of Office Space
- 26 (10' x 10') Dock High, (17 w/ Levelers)
- 1 (10 x 10) Ramped Door
- 8 Rail Served Doors
- Fenced truck court with additional parking
- Heavy Power - 3,600amps/480v 3phase
- Rail served asset
- Additional one acre available for excess parking or lay down



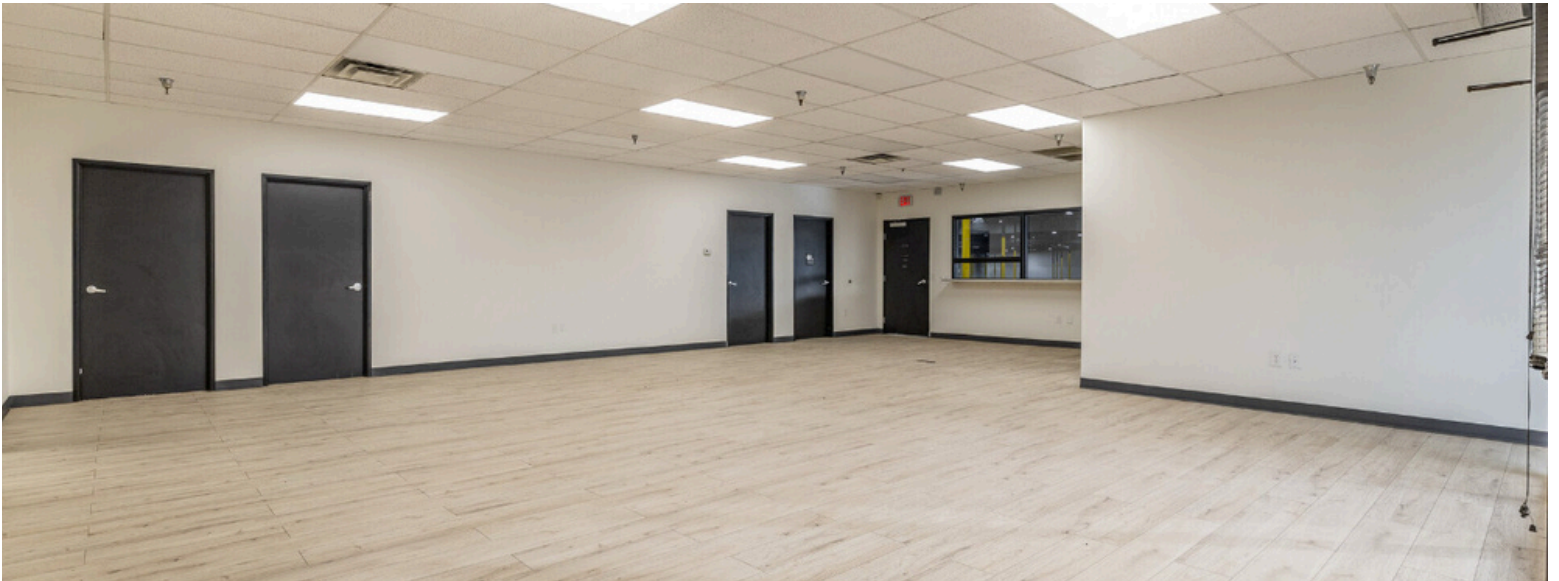
RICH YOUNG, JR., SIOR
972-236-7645
RICHJr@RICHYOUNGCOMPANY.COM



5710 LBJ FREEWAY | SUITE 150
DALLAS, TEXAS 75240
972-236-7645

2301 W COMMERCE ST. Dallas, TX 75212

174,949 SF
FOR SALE



RICH YOUNG, JR., SIOR
972-236-7645
RICHJr@RICHYOUNGCOMPANY.COM



5710 LBJ FREEWAY | SUITE 150
DALLAS, TEXAS 75240
972-236-7645

2301

W COMMERCE ST.

Dallas, TX 75212

174,949 SF
FOR SALE



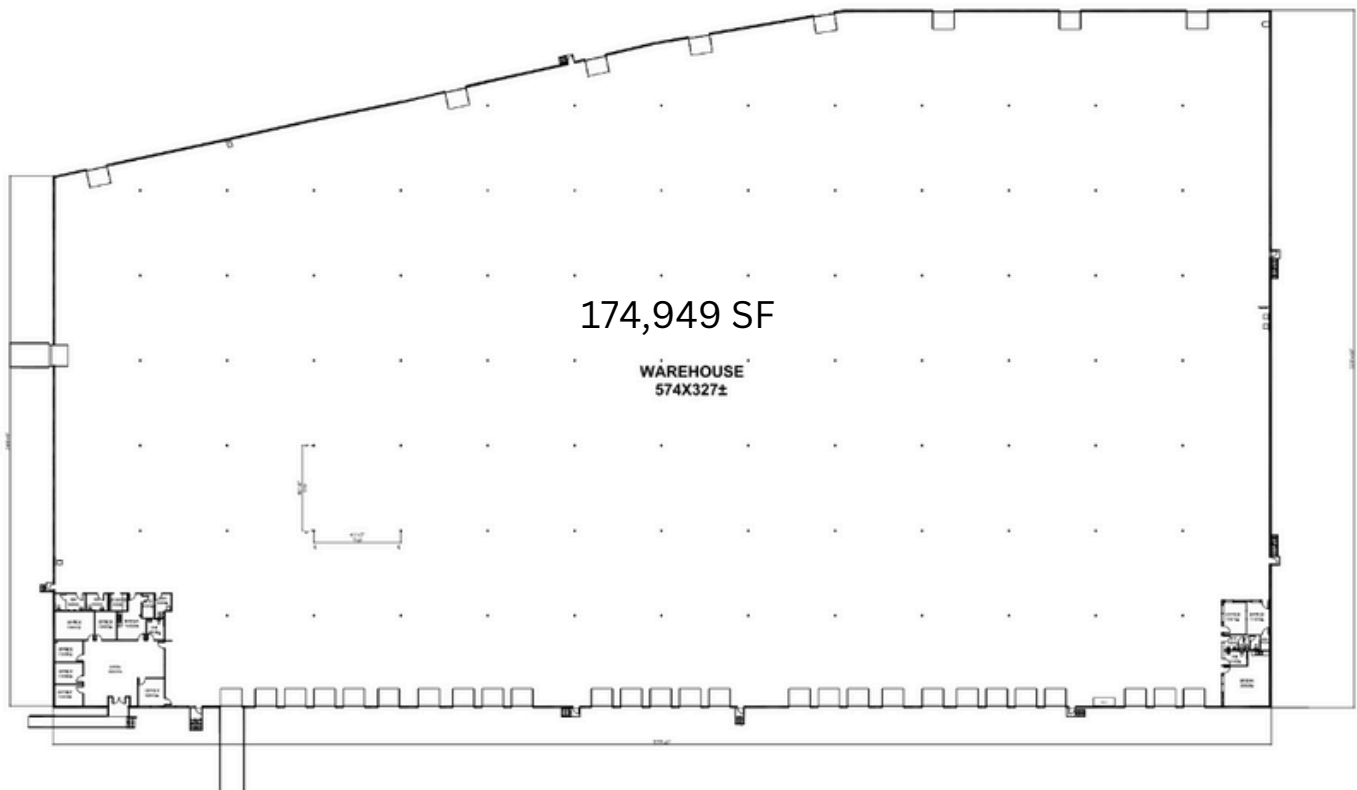
RICH YOUNG, JR., SIOR
972-236-7645
RICHJr@RICHYOUNGCOMPANY.COM



5710 LBJ FREEWAY | SUITE 150
DALLAS, TEXAS 75240
972-236-7645

2301
W COMMERCE ST.
Dallas, TX 75212

174,949 SF
FOR SALE



RICH YOUNG, JR., SIOR
972-236-7645
RICHJr@RICHYOUNGCOMPANY.COM



5710 LBJ FREEWAY | SUITE 150
DALLAS, TEXAS 75240
972-236-7645