

# PRIME

SMALL BAY INDUSTRIAL



**635-695 N.W. 4th Avenue**  
FORT LAUDERDALE, FL 33311

KEITH R. GRAVES, CCIM, SIOR  
954.652.2031  
kgraves@bergercommercial.com

DANIEL FORMAN  
954.652.2004  
dforman@bergercommercial.com

LAWRENCE OXENBERG  
954.652.2017  
loxenberg@bergercommercial.com



550 S. ANDREWS AVE.  
SUITE 400  
FORT LAUDERDALE, FL 33301



**635-695 N.W. 4TH AVENUE**  
FORT LAUDERDALE, FL 33301

## BUILDING INFORMATION

### TENANT COST

Base Rent (Triple Net)/NNN	Available upon request
Est. 2023 CAM/ OPEX	\$5.16 per sq.ft.

### SITE DESCRIPTION

Year Built	1986
Building Zoned	Industrial
Number of Buildings	1
Land Area	2.86 acres +/-

### BUILDING SIZE (SF)

Total Space	57,297 SF +/-
-------------	---------------

### OFFICE

Total Office Space	Varies
--------------------	--------

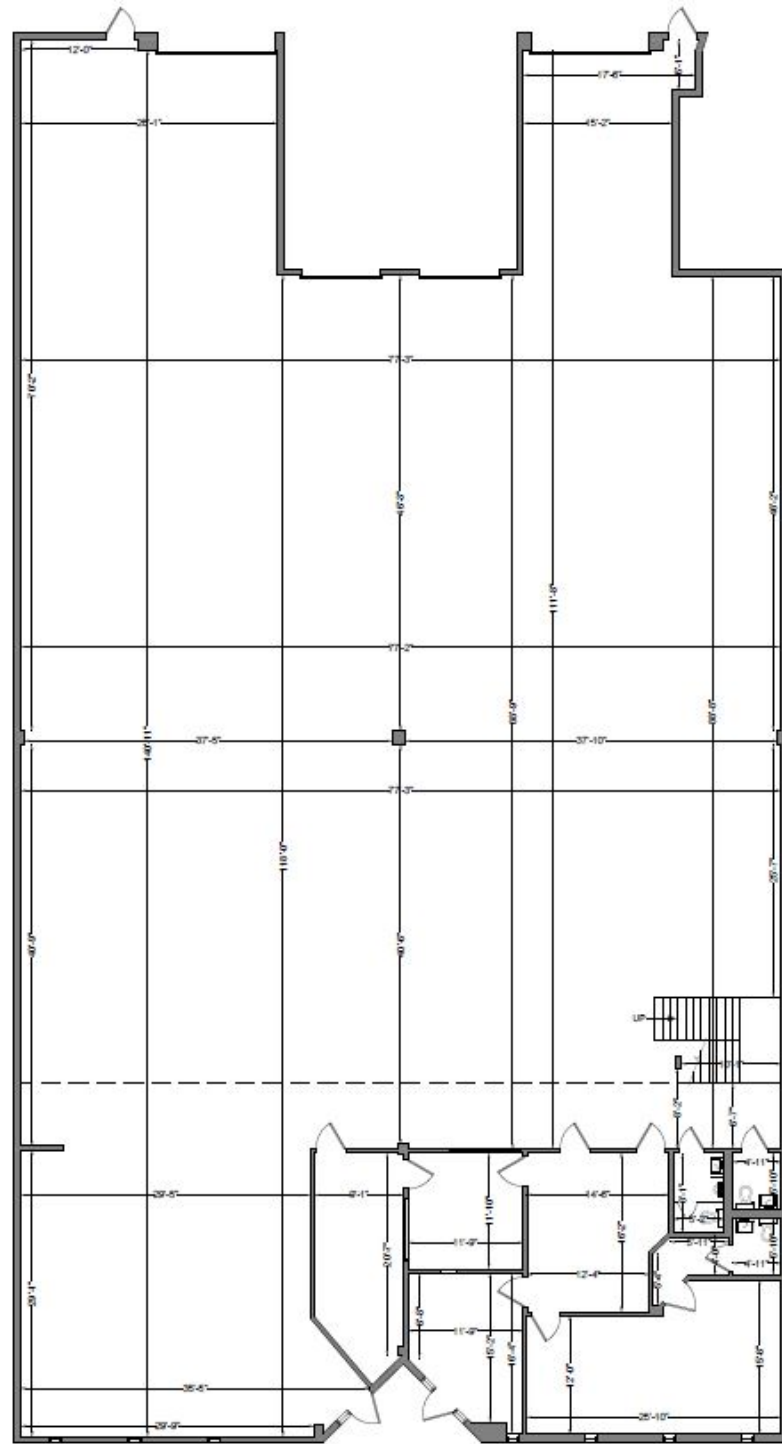
### TECHNICAL SPECIFICATION

Ceiling Height	24'
Maximum Door Height	12'

### OTHER

3 phase 120/208 volt  
Grade level and dock high loading  
Parking ratio 2.10/1,000 SF  
Ancillary fenced yard area





**BAY 665**

**SPECIFICATIONS**

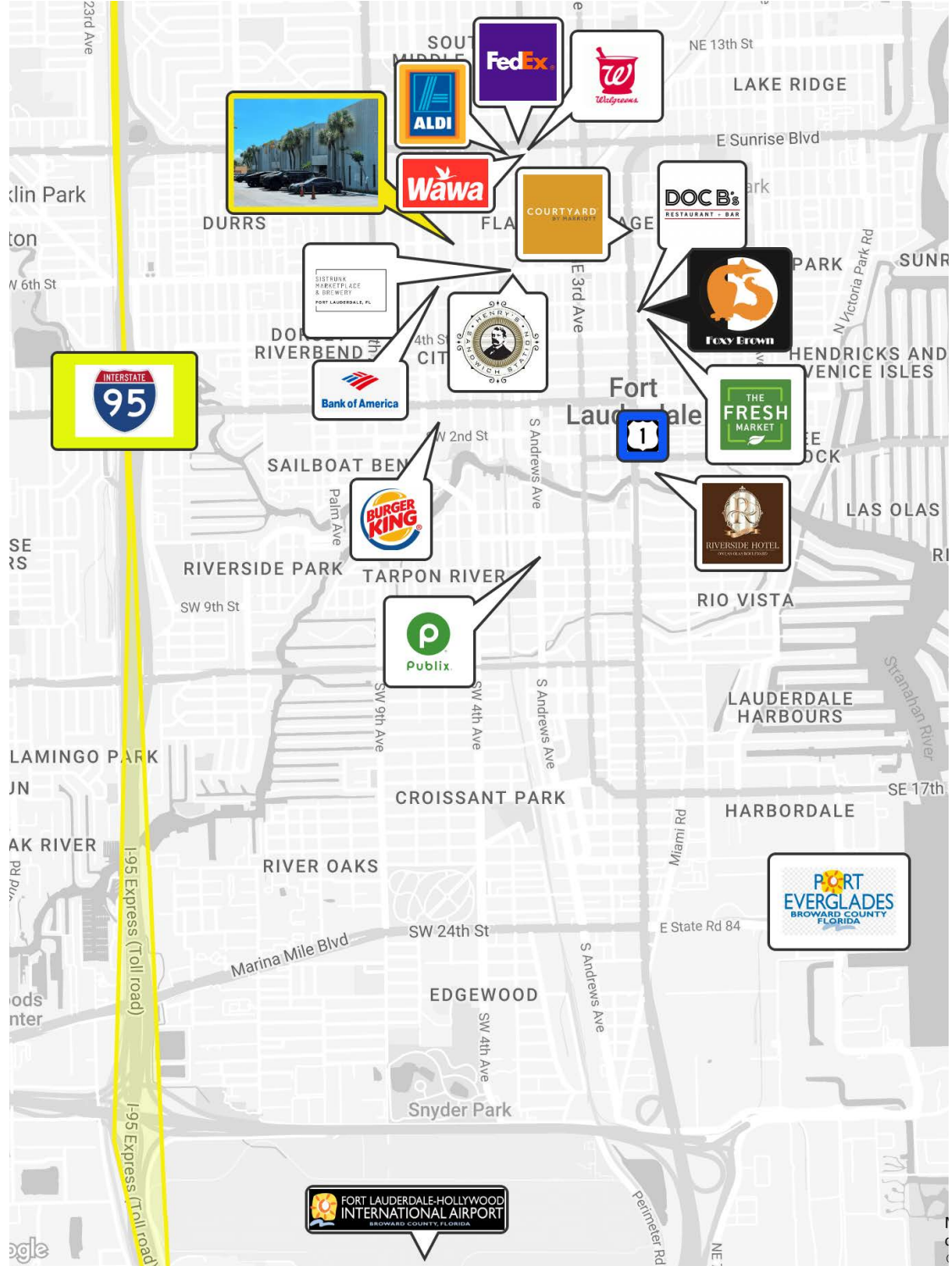
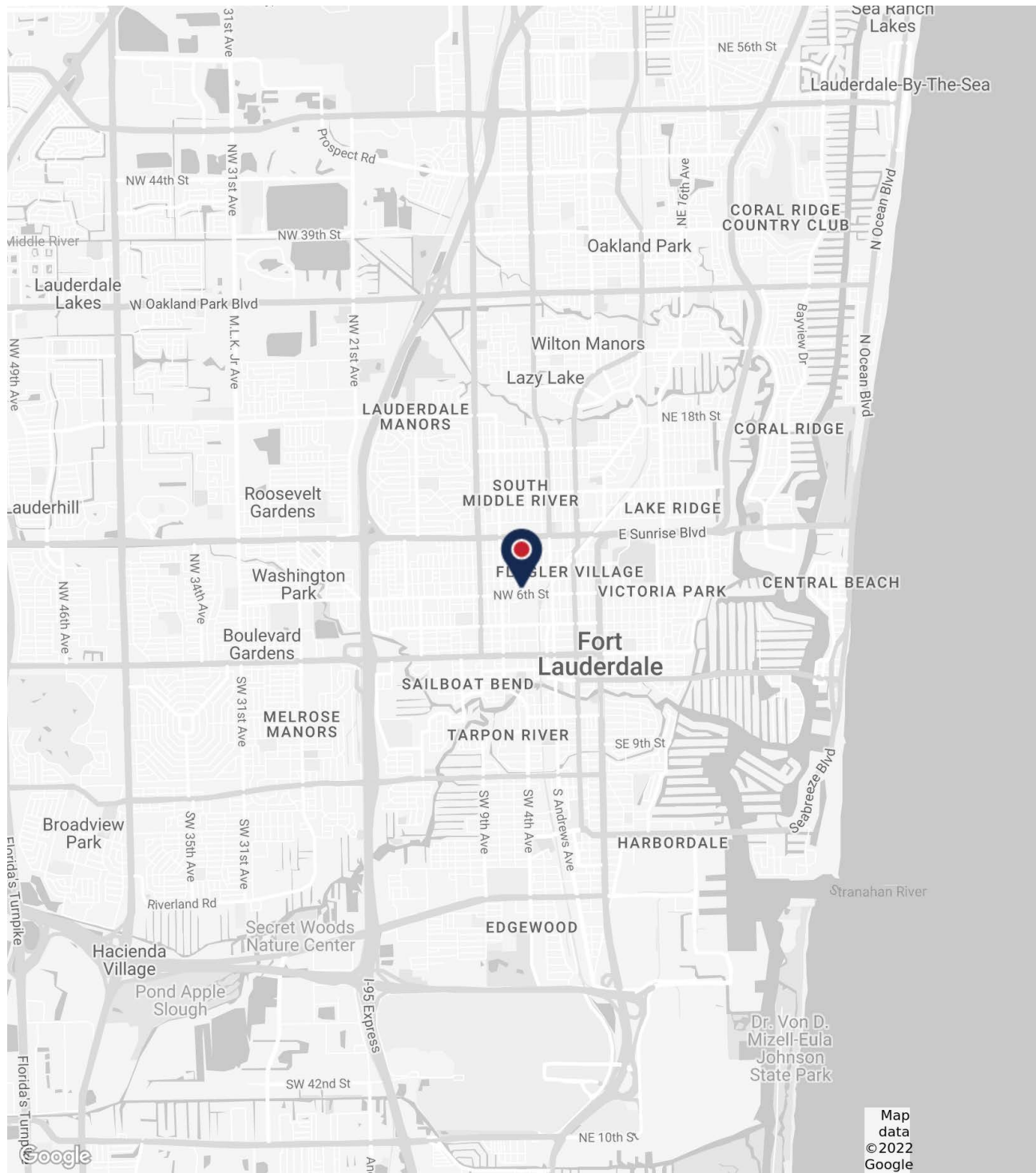
<b>BUILDING AREA:</b>	57,297 SQ. FT. +/-
<b>SITE AREA:</b>	2.86 ACRES +/-
<b>CLEAR HEIGHT:</b>	24 FEET
<b>OFFICE:</b>	VARIOUS
<b>ELECTRICAL CAPACITY:</b>	3-PHASE- 120/208 VOLTS
<b>COLUMN SPACING:</b>	55' X 35'
<b>LOADING:</b>	8 GRADE LEVEL @ 10'-12' 10 DOCK HIGH O/H DOORS
<b>ZONING</b>	B-3 CITY OF FORT LAUDERDALE
<b>BAY 665</b>	13,876 +/- RSF INCLUDING MEZZANINE 1,500 SF OFFICE
<b>SPACE FEATURES</b>	2 DOCK HIGH AND 2 GRADE LEVEL DOORS

**ACCESSIBILITY**

**STRATEGICALLY LOCATED JUST EAST OF I-95, OFF SUNRISE BLVD. WITH IMMEDIATE PROXIMITY TO DOWNTOWN/CBD - FTL, AFFLUENT HOUSING BASE AND FLAGLER VILLAGE.**

**MINUTES TO FORT LAUDERDALE- HOLLYWOOD INTERNATIONAL AIRPORT (FLL) AND BRIGHTLINE TRAIN STATION.**





## LOCATION

635-695 N.W. 4th Ave is strategically located near Downtown Fort Lauderdale (CBD) with proximity to I-95, hotels, retail, Port Everglades, and Fort Lauderdale- Hollywood International Airport (FLL).

## NEARBY CONVENIENCES

±5 MIN

- STRUNK MARKETPLACE
- HENRY'S SANDWICH STATION
- FOXY BROWN
- DOC B'S
- WALGREENS
- FEDEX
- ALDI
- COURTYARD MARRIOTT
- THE FRESHMARKET
- PUBLIX
- BANK OF AMERICA
- BURGER KING
- WAWA





## FOR MORE INFORMATION PLEASE CONTACT

**KEITH R. GRAVES, CCIM, SIOR**  
954.652.2031  
kgraves@bergercommercial.com

**DANIEL FORMAN**  
954.652.2004  
dforman@bergercommercial.com

**LAWRENCE OXENBERG**  
954.652.2017  
loxenberg@bergercommercial.com

**BERGER COMMERCIAL REALTY**  
550 S. ANDREWS AVE., SUITE 400  
FORT LAUDERDALE, FL 33301



COMMERCIAL BROKERAGE AND PROPERTY MANAGEMENT



Information furnished regarding this property is from sources deemed reliable, but no warranty or representation as to the accuracy thereof and it is submitted subject to errors, omissions, prior sale, lease or withdrawal without prior notice. All other marks displayed on this document are the property of their respective owners. Photos herein are the property of their respective owners. Use of these images without the express written consent of the owner is prohibited.