

FOR SALE
RESIDENTIAL LAKE FRONT LOT
5727 EMERINGTON CRES. ORLANDO, FL 32819



An exceptional opportunity to build your custom estate on this 1.20± acre vacant corner lot with lake views, located within the prestigious Emerson Pointe at Bay Hill enclave. The property fronts Lake Tibet, the second-largest lake on the renowned Butler Chain of Lakes, offering privacy, prestige, and access to one of Central Florida's most sought-after waterfront lifestyles.

- Lake views and frontage along Lake Tibet, part of the Butler Chain of Lakes.
- 24-hour guard-gated neighborhood surrounded by luxury custom homes.
- Minutes from Arnold Palmer's Bay Hill Golf Club and Bay Hill Marina.
- Close proximity to Restaurant Row, premier shopping, and entertainment
- Convenient access to I-4, Florida's Turnpike, and major Orlando attractions

PROPERTY HIGHLIGHTS

SIZE:
1.20 ± Acres

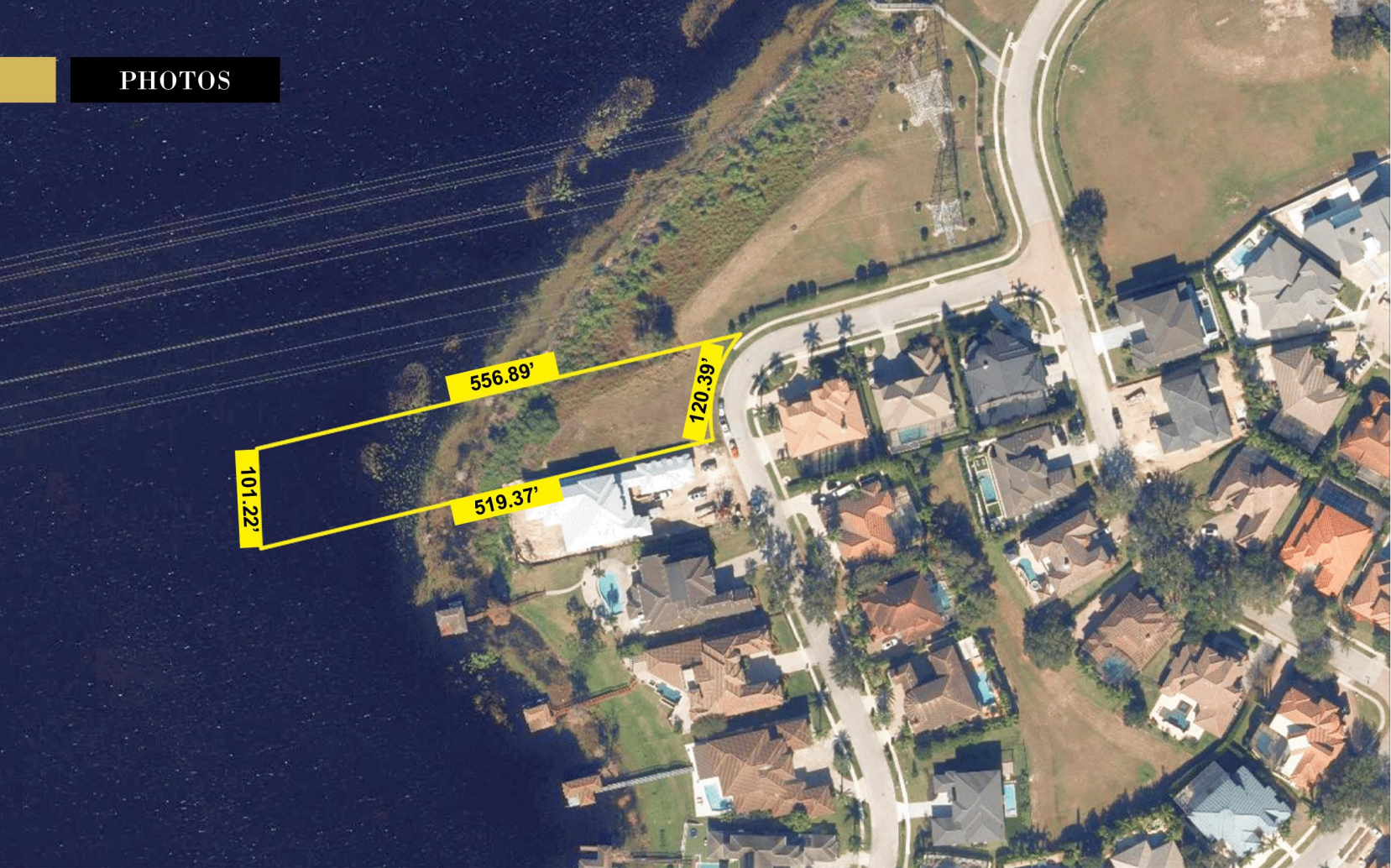
ZONING:
Residential

ADDRESS:
5727 Emerington Crescent
Orlando, FL 32819

COUNTY:
Orange County

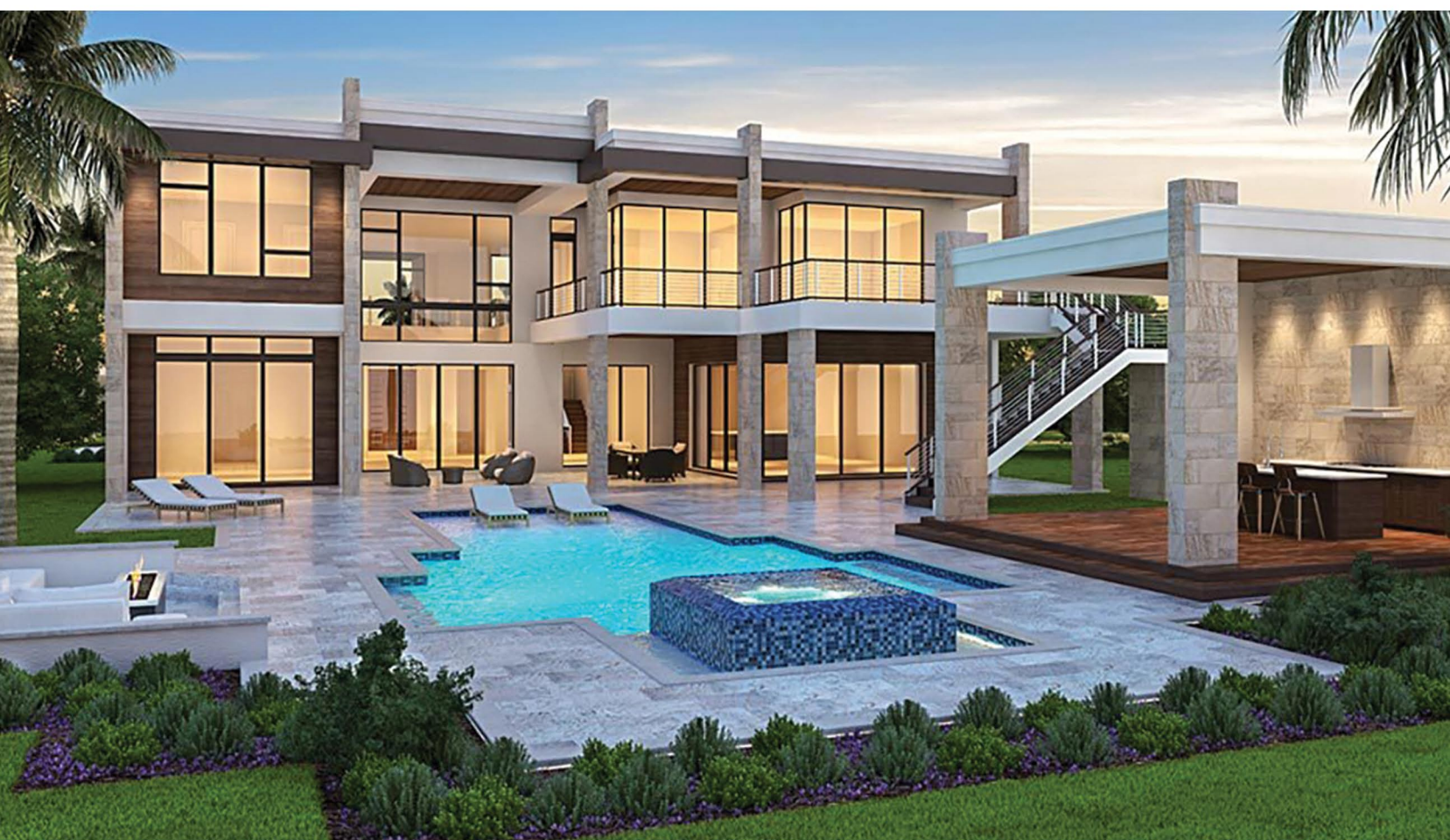
PRICE:
\$1,949,000

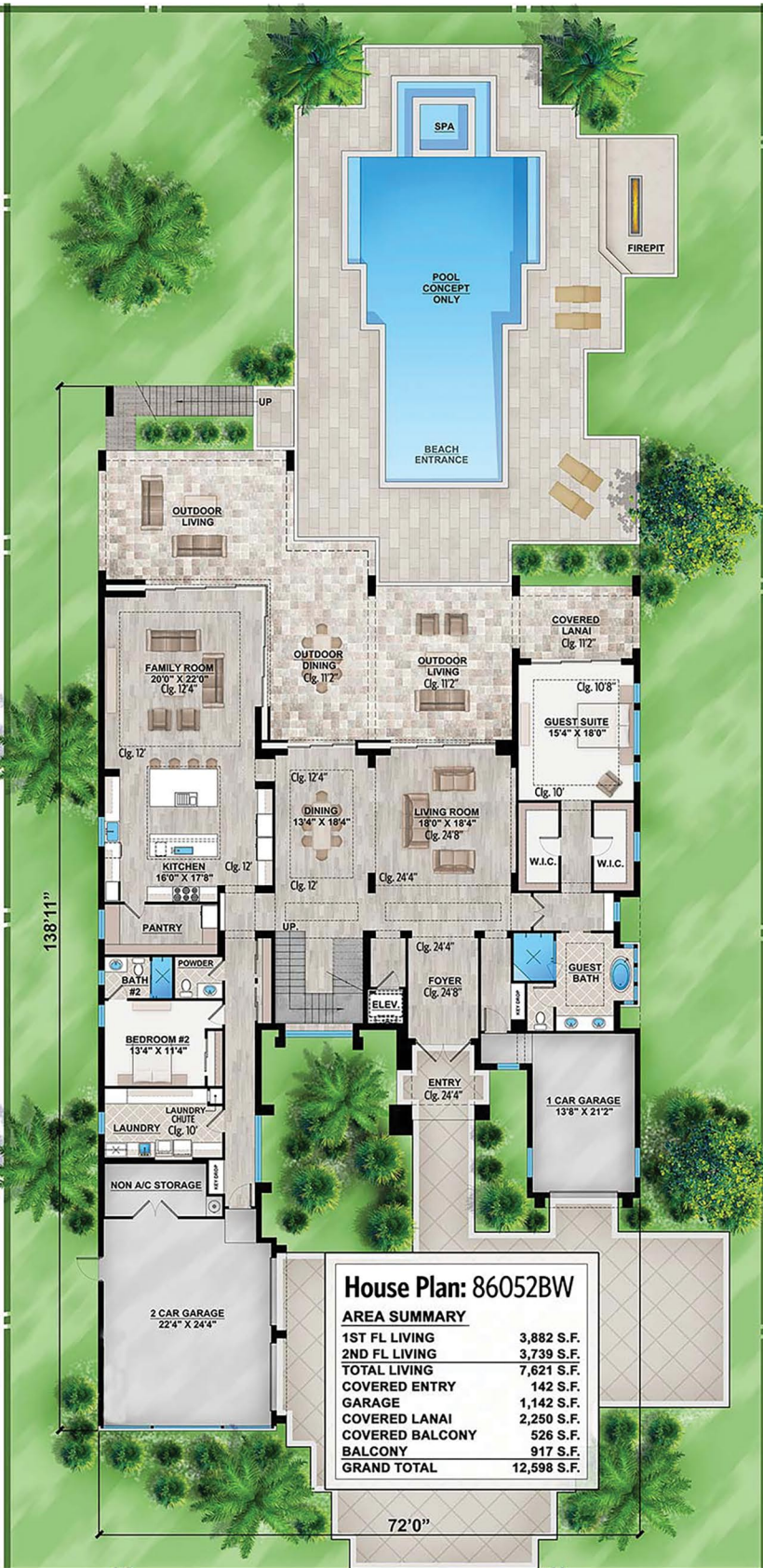
PHOTOS

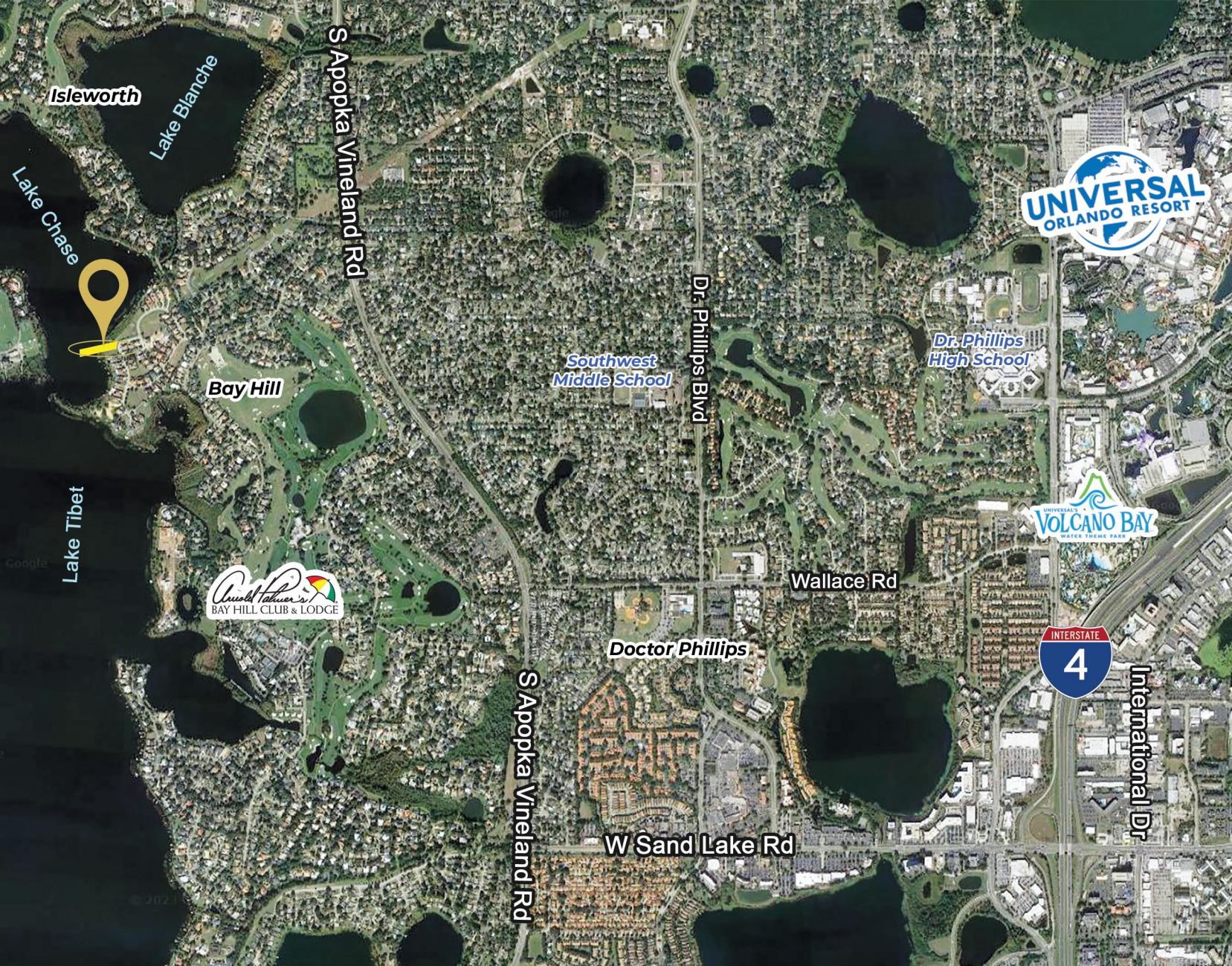




SAMPLE HOUSE







RIA LUTHRA

Licensed Real Estate Associate

407-484-2730
 rialuthra@pibland.com

OFFICE LOCATION:
 27 N Summerlin Ave
 Orlando, FL 32801



BOBBY LUTHRA

Licensed Real Estate Associate

407-468-0099
 bobluthra@pibland.com

CONTACT US:
 Phone: 407-649-9888
 Fax: 407-649-7222
 www.pibland.com

This document has been prepared by Property Investment Brokers for advertising and general information only. No warranty or representation, express or implied, is made as to the accuracy of the information contained herein, and same is submitted subject to errors, omissions, change of price, rental or other conditions, withdrawal without notice, and to any special listing conditions imposed by our principals.

