



# Office & Warehouse Space For Sublease

**N26 W23880 COMMERCE CIRCLE  
PEWAUKEE, WISCONSIN**

## Building Size

±132,000 SF

## Available Space

±28,800 SF - Suites A & B

## Lease Rate

\$7.25/SF, NNN

## Estimated NNN Rate

\$2.27/SF

## Property Highlights

- Sublease expires August 31, 2027
- Hard to find Class A space in Waukesha County
- Great Access to I-94 via Highway 164 or Highway F
- Spectrum Fiber and Milwaukee Alarm Security and Access Control Available

*For information, please contact:*

### Curt Pitzen

*Director*

t 414-395-4688

curt.pitzen@nmrk.com

### Mitchell Starczynski, SIOR

*Managing Director*

t 414-395-4692

mitchell.starczynski@nmrk.com

757 N Broadway

Suite 700

Milwaukee, WI 53202

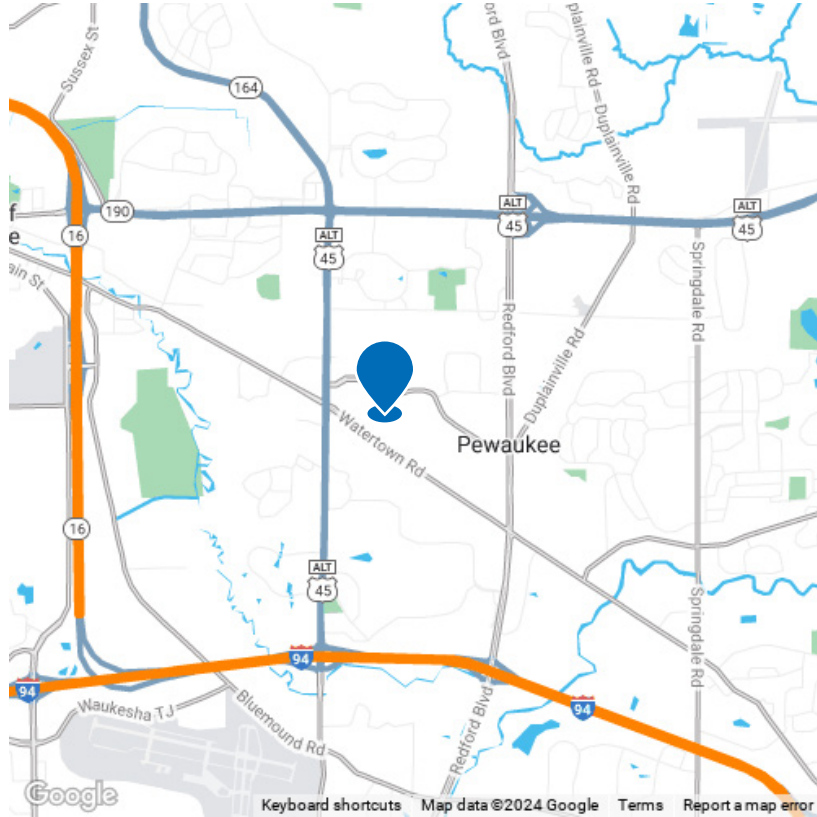
[nmrk.com](http://nmrk.com)



# NEWMARK

The information contained herein has been obtained from sources deemed reliable but has not been verified and no guarantee, warranty or representation, either express or implied, is made with respect to such information. Terms of sale or lease and availability are subject to change or withdrawal without notice.

## N26 W23880 COMMERCE CIRCLE, PEWAUKEE, WI



### BUILDING FEATURES

#### Construction

Masonry

#### Year Built

2000

#### Sprinkler

Yes

#### Zoning

M-6

#### Parking

Ample

#### Utilities

Municipal Sewer & Water

### WAREHOUSE FEATURES

#### Size

±25,200 SF

#### Ceiling Height

±24' - 25' Clear

#### Dock Doors

Five (5) with Levelers

#### Drive-Ins

One (1) - 12'x14'

#### HVAC

Gas Fired Hanging Units

#### Lighting

LED, Motion Controlled

#### Power

3-Phase, 480V, 800 Amp  
(TBV by Subtenant)

#### Column Spacing

40'x36'

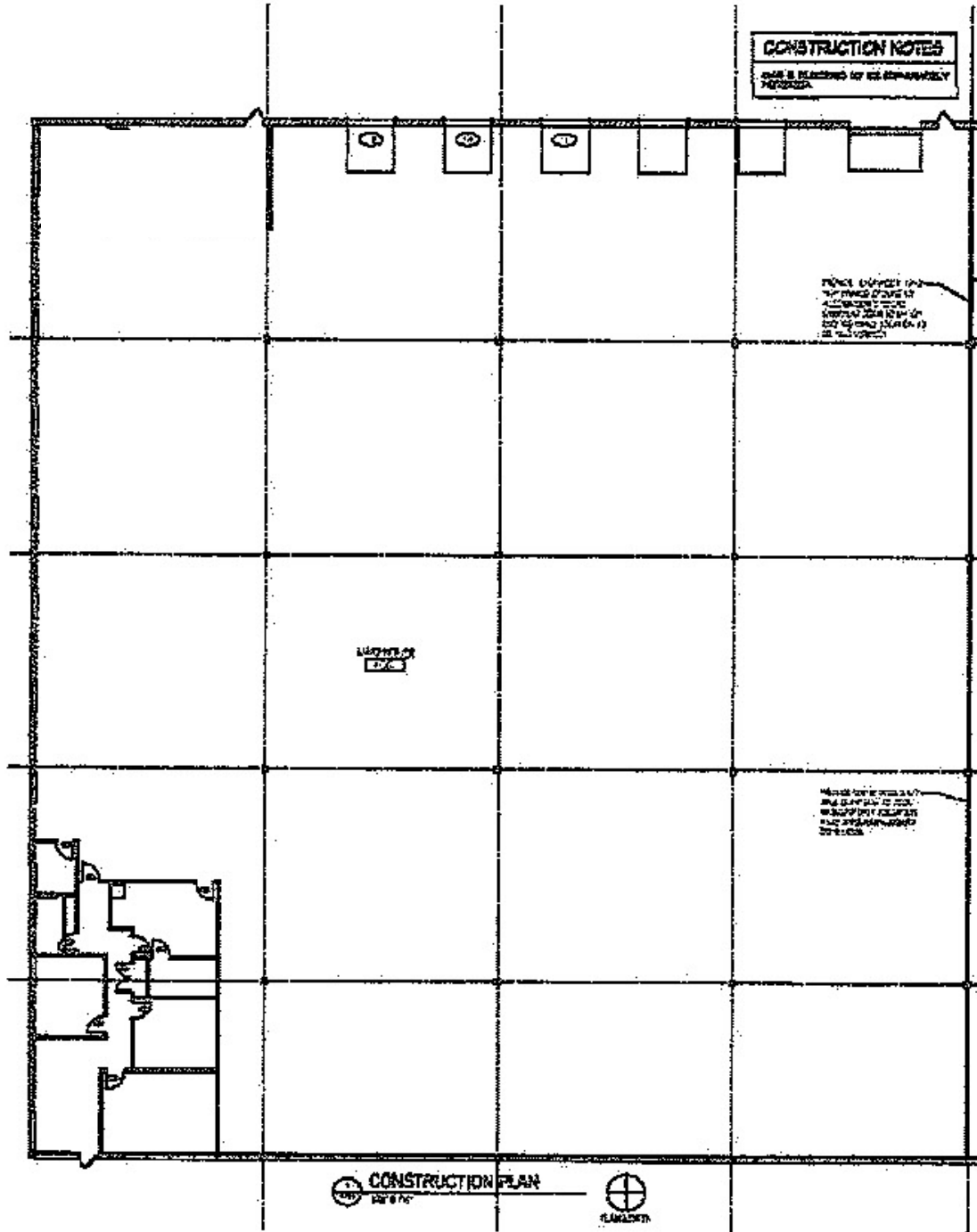
### OFFICE FEATURES

#### Size

±3,600 SF

#### Finishes

Three (3) Private Offices, Two (2)  
Kitchenettes & Open Area



\* Office layout is not accurate to depicted floor plan

**CONTACT**

**Curt Pitzen**

*Director*

t 414-395-4688

curt.pitzen@nrmk.com

[nrmk.com](http://nrmk.com)

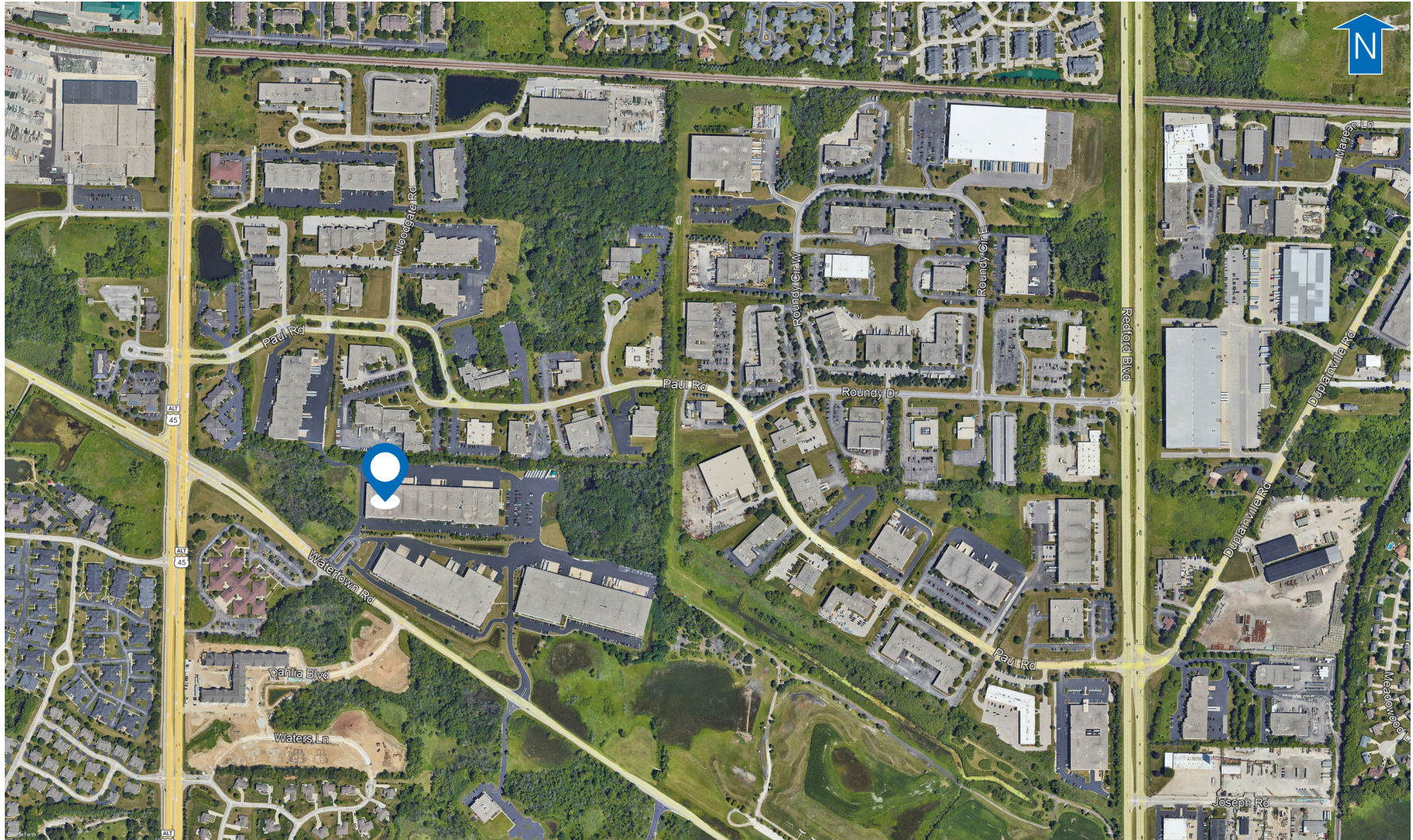
**Mitchell Starczynski, SIOR**

*Managing Director*

t 414-395-4692

mitchell.starczynski@nrmk.com

**N26 W23880 COMMERCE CIRCLE, PEWAUKEE, WI**



**CONTACT**

**Curt Pitzen**

*Director*

t 414-395-4688

curt.pitzen@nmrk.com

[nmrk.com](http://nmrk.com)

**Mitchell Starczynski, SIOR**

*Managing Director*

t 414-395-4692

mitchell.starczynski@nmrk.com

**NEWMARK**

---

# STATE OF WISCONSIN BROKER DISCLOSURE TO NON-RESIDENTIAL CUSTOMERS

**Wisconsin law requires all real estate licensees to give the following information about brokerage services to prospective customers.**

Prior to negotiating on your behalf the brokerage firm, or an agent associated with the firm, must provide you the following disclosure statement.

## **DISCLOSURE TO CUSTOMERS**

You are a customer of the brokerage firm (hereinafter Firm). The Firm is either an agent of another party in the transaction or a subagent of another firm that is the agent of another party in the transaction. A broker or a salesperson acting on behalf of the Firm may provide brokerage services to you. Whenever the Firm is providing brokerage services to you, the Firm and its brokers and salespersons (hereinafter Agents) owe you, the customer, the following duties:

- The duty to provide brokerage services to you fairly and honestly.
- The duty to exercise reasonable skill and care in providing brokerage services to you.
- The duty to provide you with accurate information about market conditions within a reasonable time if you request it, unless disclosure of the information is prohibited by law.
- The duty to disclose to you in writing certain Material Adverse Facts about a property, unless disclosure of the information is prohibited by law (see “Definition of Material Adverse Facts” below).
- The duty to protect your confidentiality. Unless the law requires it, the Firm and its Agents will not disclose your confidential information or the confidential information of other parties (see “Confidentiality Notice To Customers” below).
- The duty to safeguard trust funds and other property held by the Firm or its Agents.
- The duty, when negotiating, to present contract proposals in an objective and unbiased manner and disclose the advantages and disadvantages of the proposals.

Please review this information carefully. An agent of the Firm can answer your questions about brokerage services, but if you need legal advice, tax advice, or a professional property inspection, contact an attorney, tax advisor, or property inspector.

This disclosure is required by section 452.135 of the Wisconsin statutes and is for information only. It is a plain-language summary of the duties owed to a customer under section 452.133(1) of the Wisconsin statutes.

## **CONFIDENTIALITY NOTICE TO CUSTOMERS**

The Firm and its Agents will keep confidential any information given to the Firm or its Agents in confidence, or any information obtained by the Firm or its Agents that a reasonable person would want to be kept confidential, unless the information must be disclosed by law or you authorize the Firm to disclose particular information. The Firm and its Agents shall continue to keep the information confidential after the Firm is no longer providing brokerage services to you.

The following information is required to be disclosed by law:

1. Material Adverse Facts, as defined in Wis. Stat. §452.01 (5g) (see “definition of material adverse facts” below).
2. Any facts known by the Firm or its Agents that contradict any information included in a written inspection report on the property or real estate that is the subject of the transaction.

To ensure that the Firm and its Agents are aware of what specific information you consider confidential, you may list that information below or provide that information to the Firm or its Agents by other means. At a later time, you may also provide the Firm or its Agents with other information you consider to be confidential.

CONFIDENTIAL INFORMATION: \_\_\_\_\_

\_\_\_\_\_

NON-CONFIDENTIAL INFORMATION (The following information may be disclosed by the Firm and its Agents): \_\_\_\_\_

\_\_\_\_\_

(INSERT INFORMATION YOU AUTHORIZE TO BE DISCLOSED SUCH AS FINANCIAL QUALIFICATION INFORMATION)

## **DEFINITION OF MATERIAL ADVERSE FACTS**

A “Material Adverse Fact” is defined in Wis. Stat. §452.01 (5g) as an Adverse Fact that a party indicates is of such significance, or that is generally recognized by a competent licensee as being of such significance to a reasonable party, that it affects or would affect the party’s decision to enter into a contract or agreement concerning a transaction or affects or would affect the party’s decision about the terms of such a contract or agreement.

An “Adverse Fact” is defined in Wis. Stat. §452.01 (1e) as a condition or occurrence that a competent licensee generally recognizes will significantly and adversely affect the value of the property, significantly reduce the structural integrity of improvements to real estate, or present a significant health risk to occupants of the property; or information that indicates that a party to a transaction is not able to or does not intend to meet his or her obligations under a contract or agreement made concerning the transaction.

## **SEX OFFENDER REGISTRY**

Notice: You may obtain information about the sex offender registry and persons registered with the registry by contacting the Wisconsin Department of Corrections on the Internet at <http://www.doc.wi.gov/> or by phone at 608-240-5830.

No representation is made as to the legal validity of any provision or the adequacy of any provision in any specific transaction.