



ZACUTO GROUP
COMMERCIAL REAL ESTATE

FOR SUBLEASE

JACKIE LUBRANO
Senior Vice President
267.278.0443
jackie@zacutogroup.com
DRE #02024601

3767
OVERLAND AVE
Culver City
CREATIVE OFFICE / FLEX

SUBLEASE DETAILS

3767 OVERLAND AVENUE
CULVER CITY, CA 90034

SIZE

2,405 SF

PRICE

\$2.75/SF MG

TERM

Through April, 30 2026
(longer term available)

PARKING

6 parking spaces
each @100/month

CREATIVE OFFICE / FLEX

2-story flex space with roll-up door for indoor/outdoor flow.
Bright interiors with operable windows. Ideal for Creative
Office with plenty of storage space.

VERSATILE LAYOUT

Open layout with 3 private offices/conference rooms, open
kitchens, 1 private bathrooms, & storage room. Parking on-site
directly in front of the unit.

CENTRAL LOCATION

Located in Culver City right off the 405 freeway, with close
proximity to Mar Vista, Venice, and mid city.

LISTING TEAM



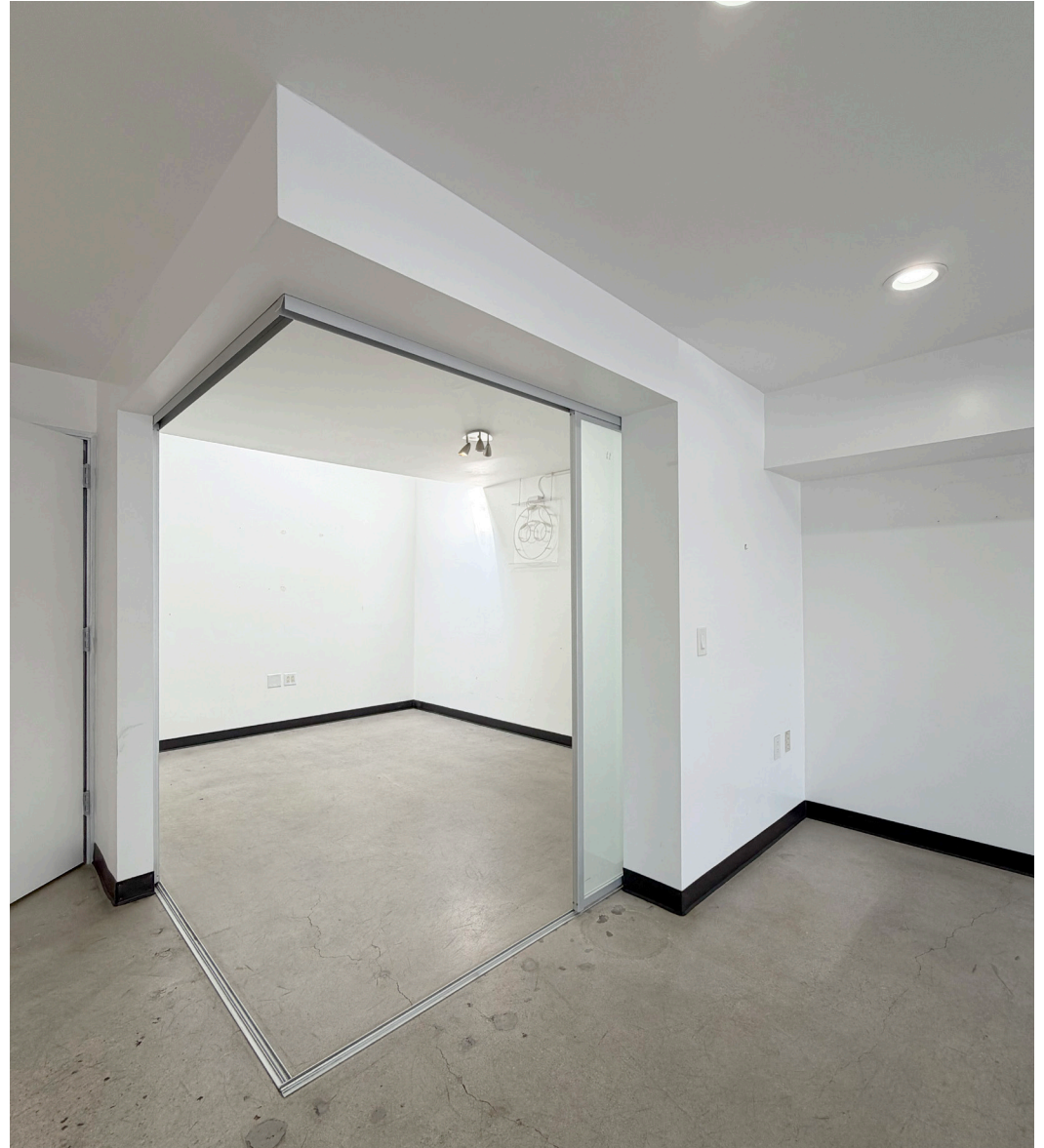
JACKIE LUBRANO
Senior Vice President
267.278.0443
jackie@zacutogroup.com
DRE #02024601





SUBLEASE

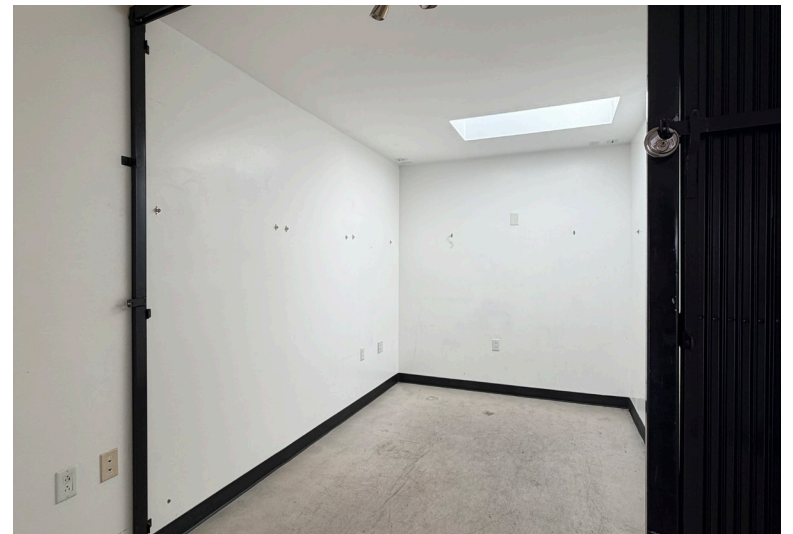
3767 OVERLAND AVENUE, CULVER CITY, CA 90034



ZACUTOGROUP.COM | 310-469-9300

SUBLEASE

3767 OVERLAND AVENUE, CULVER CITY, CA 90034



ZACUTOGROUP.COM | 310.469.9012



SUBLEASE

3767 OVERLAND AVENUE, CULVER CITY, CA 90034



ZACUTOGROUP.COM | 310.469.9012



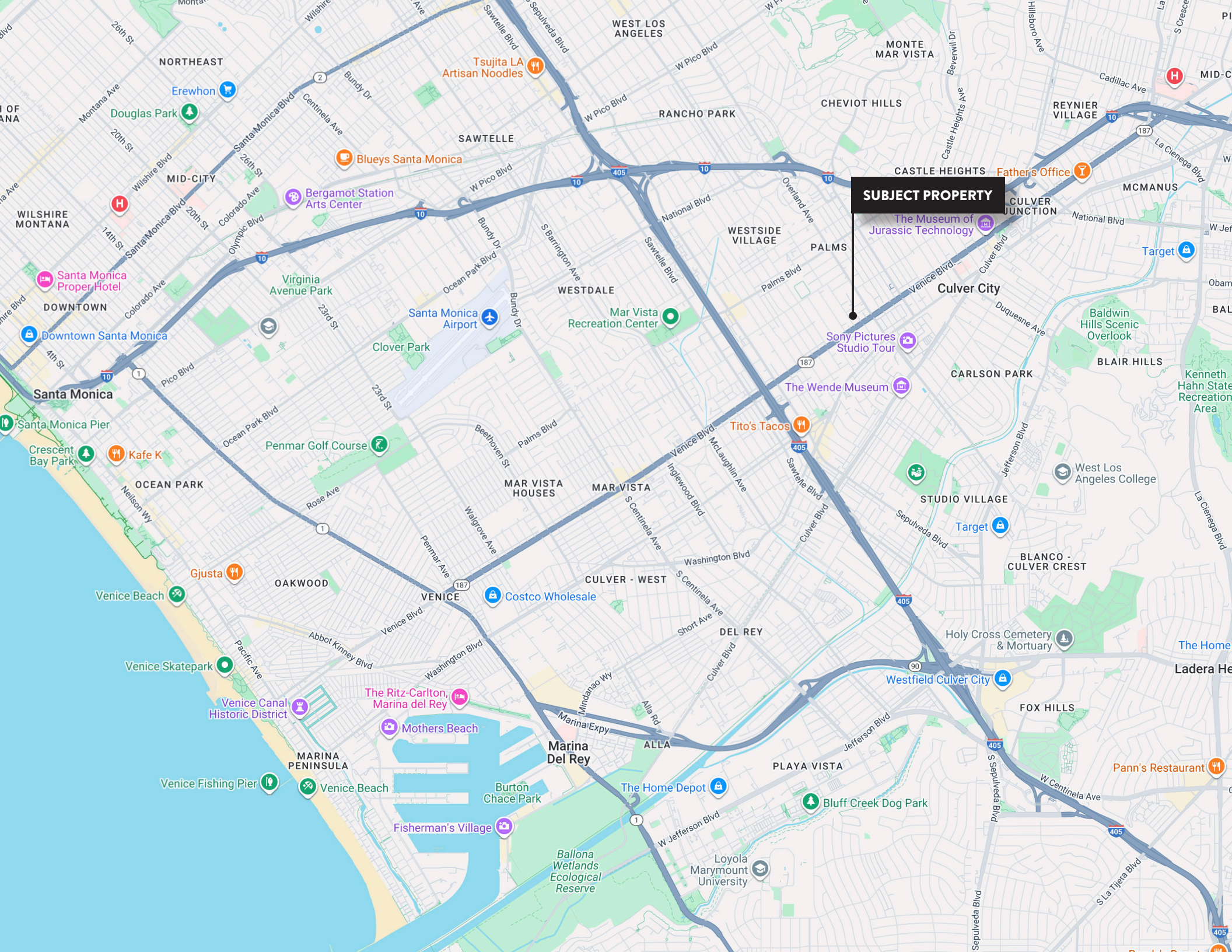
SUBLEASE

3767 OVERLAND AVENUE, CULVER CITY, CA 90034



ZACUTOGROUP.COM | 310.469.9012





SUBJECT PROPERTY

The Museum of
Jurassic Technology

Sony Pictures
Studio Tour

The Wende Museum

Tito's Tacos

Costco Wholesale

The Ritz-Carlton,
Marina del Rey

Mothers Beach

Fisherman's Village

The Home Depot

Westfield Culver City

Pann's Restaurant

3767
OVERLAND AVE
Culver City
CREATIVE OFFICE / FLEX



ZACUTO GROUP
COMMERCIAL REAL ESTATE

JACKIE LUBRANO

Senior Vice President

267.278.0443

jackie@zacutogroup.com

DRE #02024601

No warranty, express or implied, is made as to the accuracy of the information contained herein. This information is submitted subject to errors, omissions, change of price, rental or other conditions, withdrawal without notice. All parties who receive this material should not rely on it, but should use it as a starting point of analysis, and should independently confirm the accuracy of the information contained herein through a due diligence review of the books, records, files and documents that constitute reliable sources of the information described herein. Logos and images are for identification purposes only and may be trademarks of their respective companies. All terms provided are approximate. Leasee to verify. 1/2026

ZACUTOGROUP.COM | 310-469-9300

