



7,047 SF AVAILABLE FOR SUBLEASE

# GARCO MILL

4900 O'HEAR AVENUE  
NORTH CHARLESTON, SC 29407

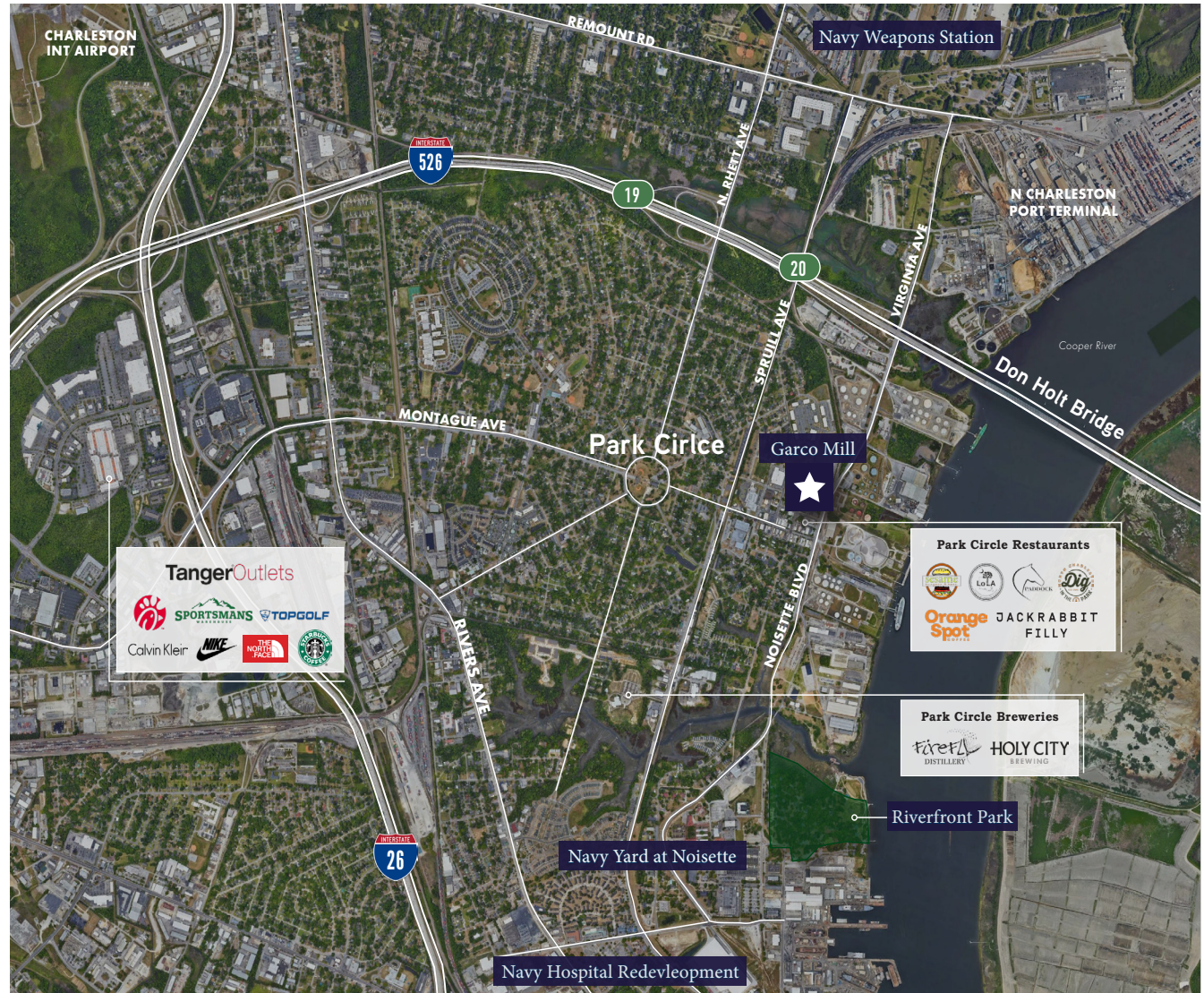
# GARCO MILL

4900 O'Hear Avenue

## PROPERTY HIGHLIGHTS

### Garco Mill at Park Circle

A vibrant destination filled with shops, dining, entertainment, creative energy, entrepreneurs, and inviting green spaces — ushering in a new era for a cherished neighborhood. Perfectly positioned in the center of North Charleston's growth, Park Circle offers unmatched connectivity — just minutes from downtown Charleston, Mt. Pleasant, scenic beaches, and Charleston International Airport.



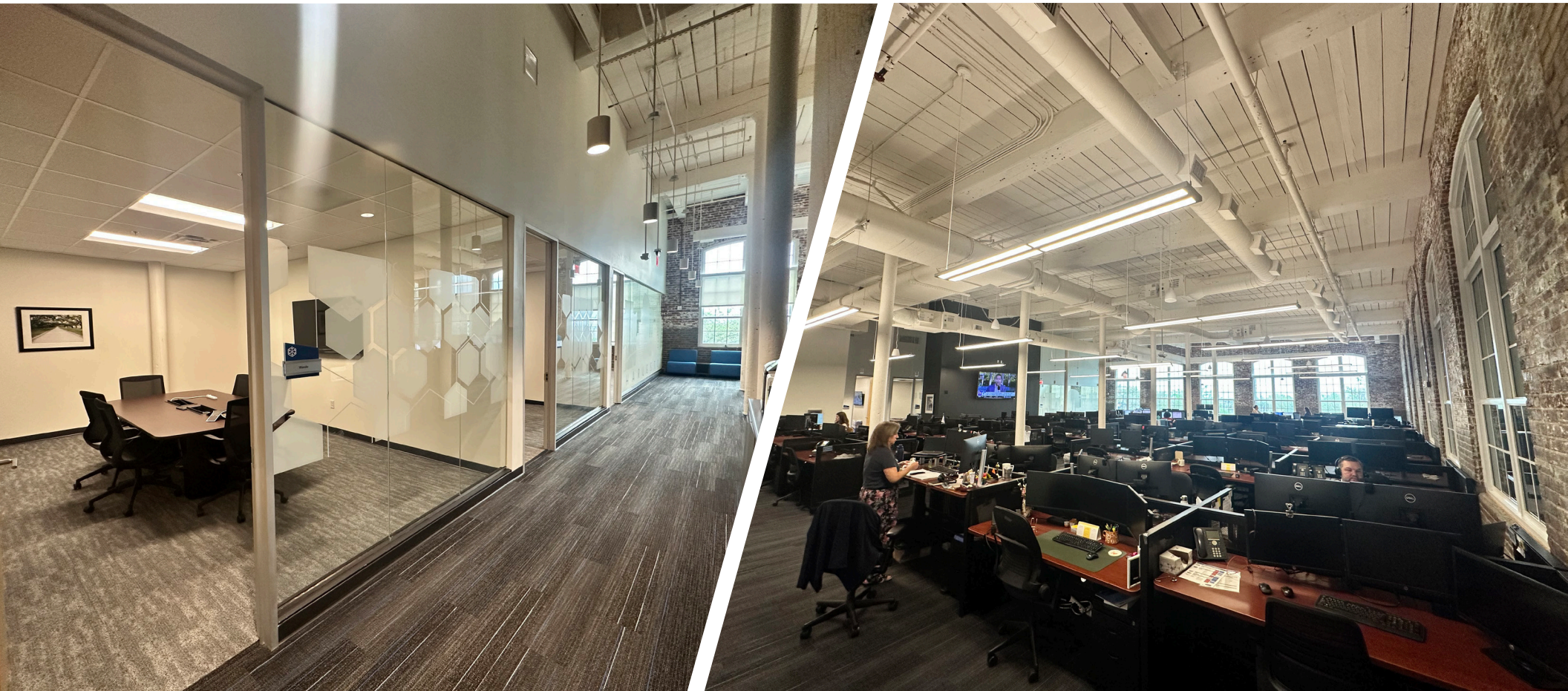
# GARCO MILL

4900 O'Hear Avenue



## PROPERTY FEATURES

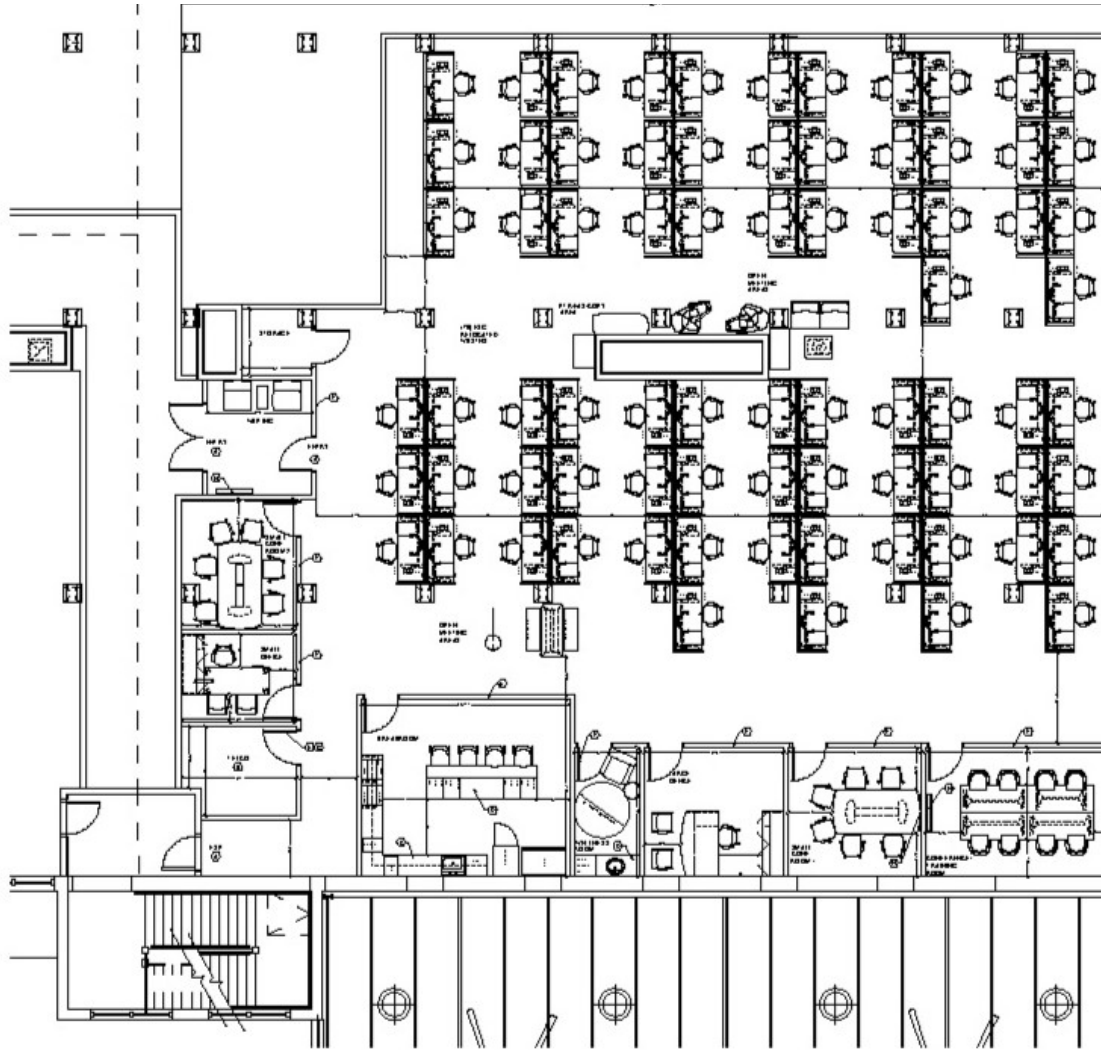
<b>Building Size:</b>	75,000	<b>Year Built:</b>	1940/2020
<b>Space Available:</b>	7,047	<b>When:</b>	Move-in Ready
<b>Expiration Date:</b>	12/31/2027	<b>Parking:</b>	Ample (Free)
<b>Furniture:</b>	Negotiable	<b>Lease Rate:</b>	Consult Broker



# GARCO MILL

4900 O'Hear Avenue

## FLOOR PLAN



# GARCO MILL

4900 O'Hear Avenue





**FOR MORE INFORMATION, CONTACT:**

BRADY DASHIELL  
+1 843 724 0106  
[brady.dashiell@cushwake.com](mailto:brady.dashiell@cushwake.com)

NICK TANANA  
+1 843 724 0109  
[nick.tanana@cushwake.com](mailto:nick.tanana@cushwake.com)



©2025 Cushman & Wakefield. All rights reserved. The information contained in this communication is strictly confidential. This information has been obtained from sources believed to be reliable but has not been verified. NO WARRANTY OR REPRESENTATION, EXPRESS OR IMPLIED, IS MADE AS TO THE CONDITION OF THE PROPERTY (OR PROPERTIES) REFERENCED HEREIN OR AS TO THE ACCURACY OR COMPLETENESS OF THE INFORMATION CONTAINED HEREIN, AND SAME IS SUBMITTED SUBJECT TO ERRORS, OMISSIONS, CHANGE OF PRICE, RENTAL OR OTHER CONDITIONS, WITHDRAWAL WITHOUT NOTICE, AND TO ANY SPECIAL LISTING CONDITIONS IMPOSED BY THE PROPERTY OWNER(S). ANY PROJECTIONS, OPINIONS OR ESTIMATES ARE SUBJECT TO UNCERTAINTY AND DO NOT SIGNIFY CURRENT OR FUTURE PROPERTY PERFORMANCE.