

# First Horizon Center

150 South Pine Island Road  
Plantation, FL 33324

\$24.00  
psf NNN

\$13.60  
Opex psf



**Greg Martin**

Principal, Managing Director  
(954) 903-1815

[greg.martin@avisonyoung.com](mailto:greg.martin@avisonyoung.com)

**Justin Cope, SIOR**

Principal  
(954) 903-3701

[justin.cope@avisonyoung.com](mailto:justin.cope@avisonyoung.com)

**Lisa Blumer, CCIM**

Principal  
(954) 903-3703

[lisa.blumer@avisonyoung.com](mailto:lisa.blumer@avisonyoung.com)

**AVISON  
YOUNG**



# Amenities that Work for You



## Renovated Common Areas

Recent renovations to common areas, main lobby, and elevator cabs



## Prime Corporate Location

Easy access to I-595, I-75, I-95, and Florida's Turnpike



## Nearby Conveniences

Walking distance to hotels, restaurants, and onsite banking



## Abundant Parking

4.0/1,000 sf parking ratio for convenience



### Greg Martin

Principal, Managing Director

(954) 903-1815

[greg.martin@avisonyoung.com](mailto:greg.martin@avisonyoung.com)

### Justin Cope, SIOR

Principal

(954) 903-3701

[justin.cope@avisonyoung.com](mailto:justin.cope@avisonyoung.com)

### Lisa Blumer, CCIM

Principal

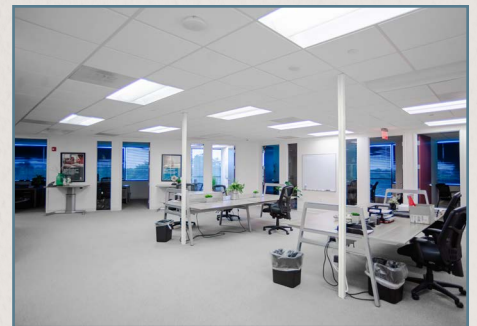
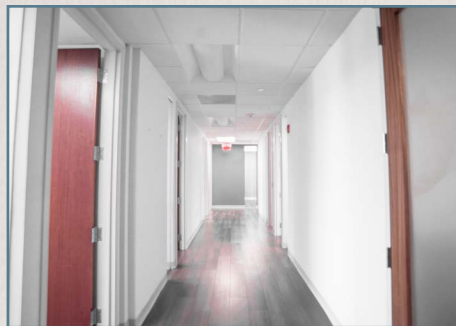
(954) 903-3703

[lisa.blumer@avisonyoung.com](mailto:lisa.blumer@avisonyoung.com)

**AVISON  
YOUNG**



# Discover Your Future Office



## Greg Martin

Principal, Managing Director  
(954) 903-1815

[greg.martin@avisonyoung.com](mailto:greg.martin@avisonyoung.com)

## Justin Cope, SIOR

Principal  
(954) 903-3701

[justin.cope@avisonyoung.com](mailto:justin.cope@avisonyoung.com)

## Lisa Blumer, CCIM

Principal  
(954) 903-3703

[lisa.blumer@avisonyoung.com](mailto:lisa.blumer@avisonyoung.com)

**AVISON  
YOUNG**



# Suites Available Now

**115**

1,611 SF

[View Floorplan](#)

**260**

1,994 SF

[View Floorplan](#)

[View Suite Video](#)

**200**

3,540 SF

[View Floorplan](#)

[View Suite Video](#)

**270**

1,480 SF

[View Floorplan](#)

[View Suite Video](#)

**230**

5,672 SF

[View Floorplan](#)

**400**

7,538 SF

[View Floorplan](#)

---

## Greg Martin

Principal, Managing Director

(954) 903-1815

[greg.martin@avisonyoung.com](mailto:greg.martin@avisonyoung.com)

## Justin Cope, SIOR

Principal

(954) 903-3701

[justin.cope@avisonyoung.com](mailto:justin.cope@avisonyoung.com)

## Lisa Blumer, CCIM

Principal

(954) 903-3703

[lisa.blumer@avisonyoung.com](mailto:lisa.blumer@avisonyoung.com)

**AVISON  
YOUNG**



# Location That Works for You

## Banks

First Horizon  
Bank of America  
Chase

## Restaurants

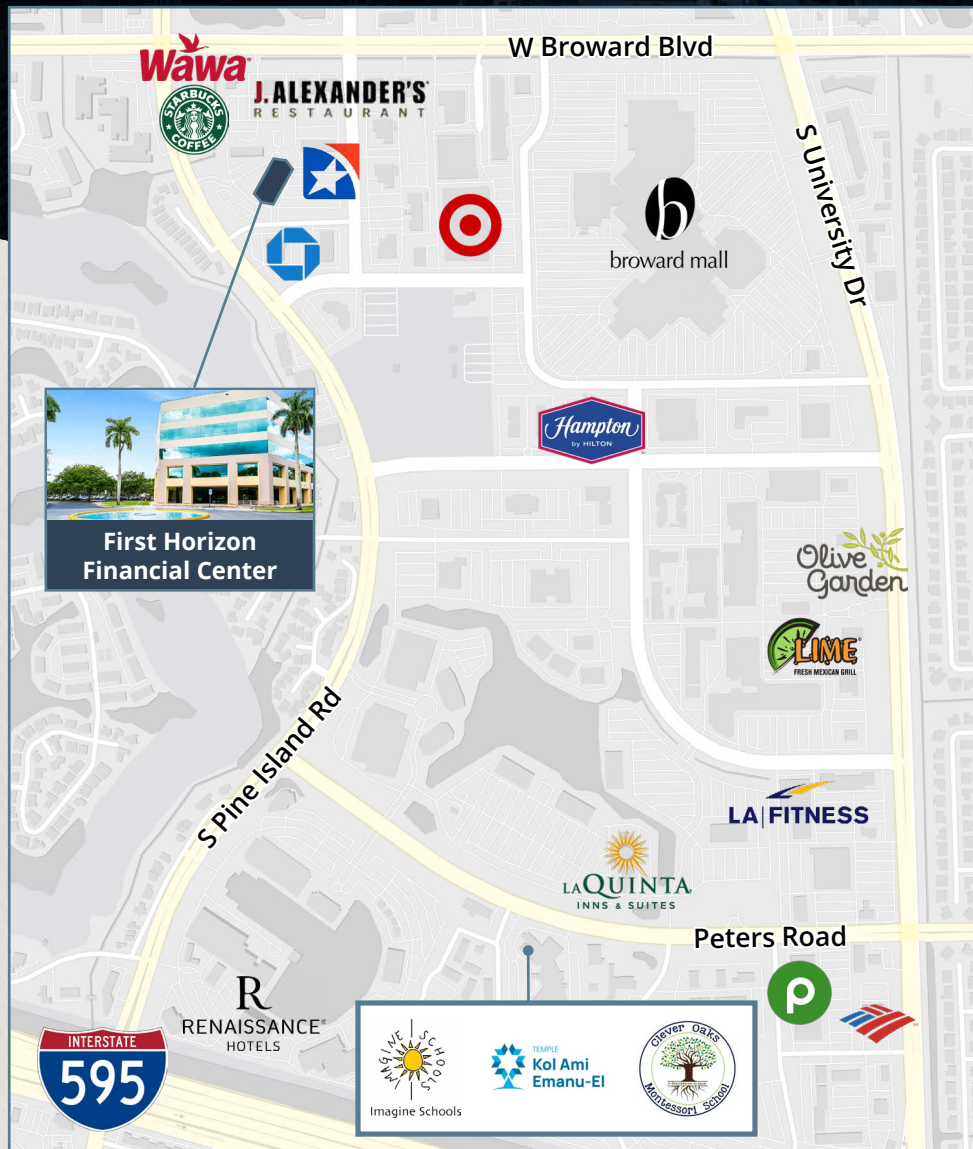
Starbucks  
Olive Garden  
Lime Fresh Mexican Grill  
J. Alexander's Restaurant

## Schools

Imagine Schools Plantation  
Temple Kol Ami Emanu-El  
Clever Oaks Montessori School

## Miscellaneous

Broward Mall	Wawa
Hampton Inn	Target
Renaissance Hotels	LA Fitness
La Quinta Inn	Crunch Fitness



## Greg Martin

Principal, Managing Director  
(954) 903-1815  
greg.martin@avisonyoung.com

## Justin Cope, SIOR

Principal  
(954) 903-3701  
justin.cope@avisonyoung.com

## Lisa Blumer, CCIM

Principal  
(954) 903-3703  
lisa.blumer@avisonyoung.com

**AVISON  
YOUNG**