

# RETAIL FOR LEASE

**18120-18182  
PIONEER BOULEVARD**

Artesia, CA  
90703



**Exclusively Listed By: Tyler Portman | (562) 762-3152 | tyler@gmpropertiesinc.com | Lic. 01919110**

# ABOUT THE PROPERTY

GM Properties, Inc. proudly presents the Crossroads Center. The 22,161 square foot multi-tenant retail property features units from 1,039 SF up to maximum contiguous of 2,353 SF. Situated at the corner of Pioneer Boulevard and 183rd Street, the subject property offers excellent visibility at one of the city's best signalized intersections. 18120-18182 Pioneer Boulevard presents tenants with strong demographics, including 478k people within 5 miles and an average household income of nearly \$100,000.



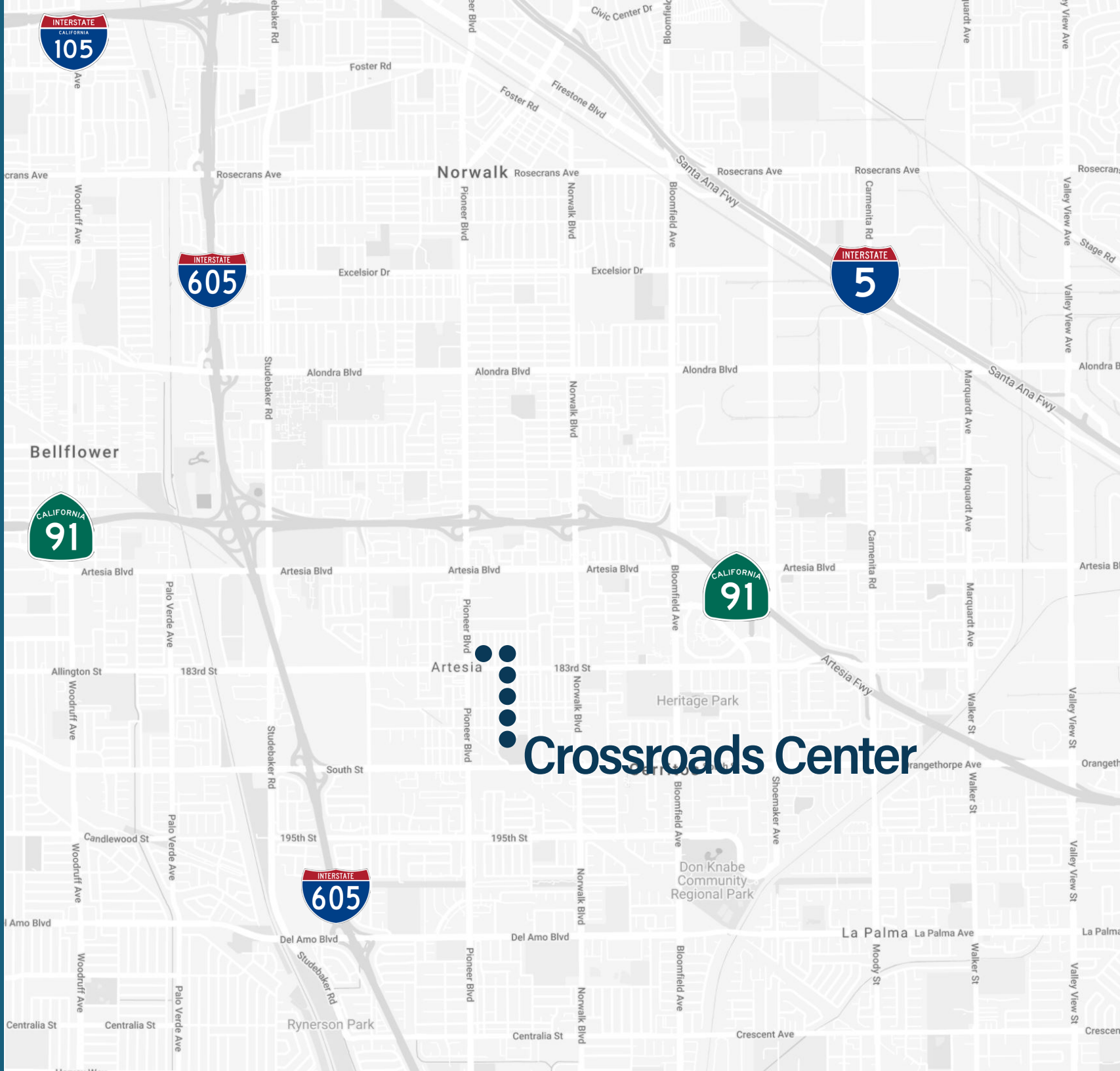
- Newer Construction - Built in 2007
- Prime Location at Signalized Intersection
- Flexible Unit Sizes from 1,039 to 2,353 Square Feet
- Modern Architecture Featuring Towers and Extensive Glass

For a virtual tour and aerial video:  
[www.CrossroadsCenterArtesia.com](http://www.CrossroadsCenterArtesia.com)



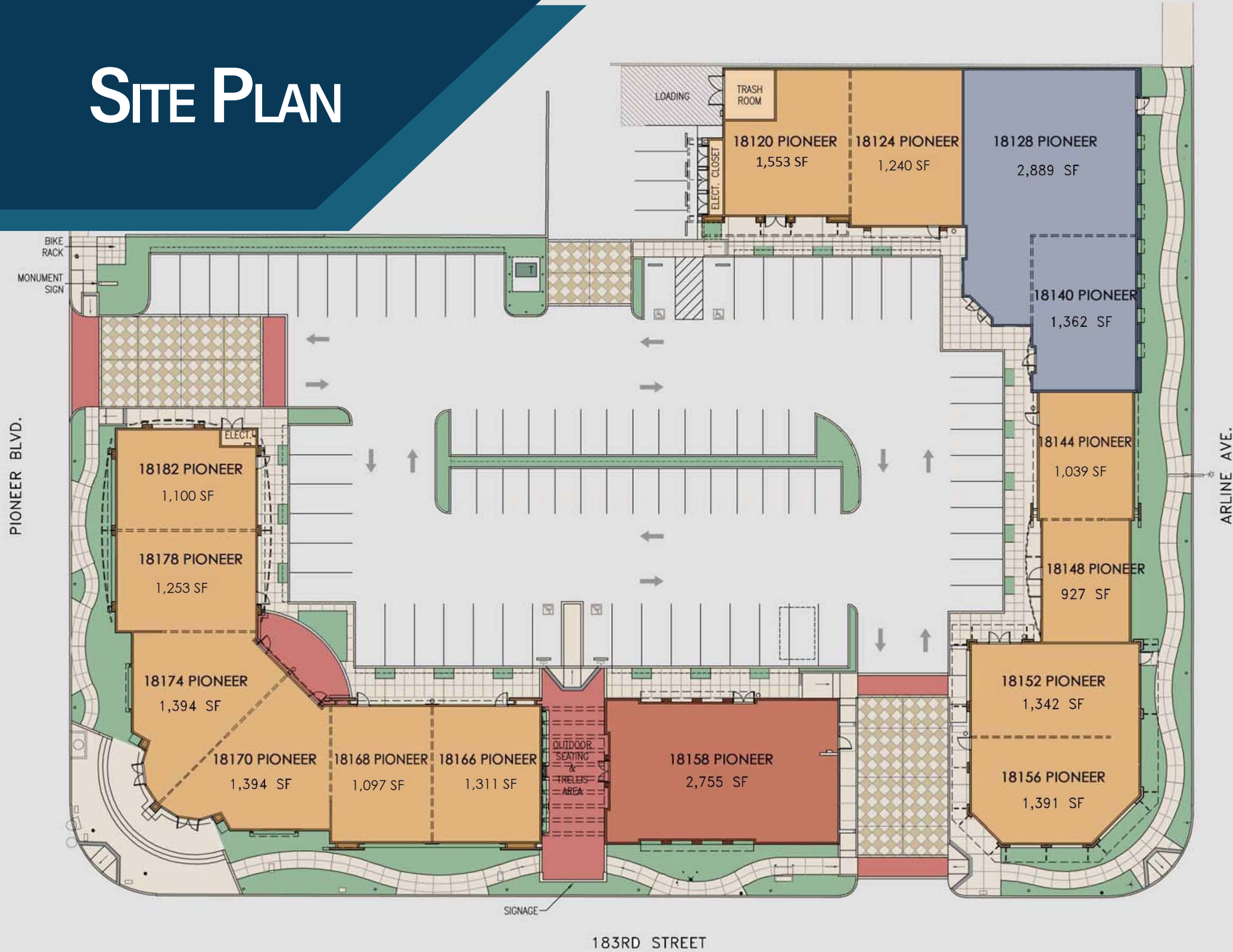


# MAP



**Crossroads Center**

# SITE PLAN



PIONEER BLVD.

ARLINE AVE.

183RD STREET

SIGNAGE

OUTDOOR SEATING & TRELLIS AREA

LOADING

TRASH ROOM

ELECT. CLOSET

ELECT.

BIKE RACK  
MONUMENT SIGN

# AVAILABLE UNITS

## **18124 PIONEER BOULEVARD**

1,240 Square Feet In-Line Space

Grey Shell

## **18144 PIONEER BOULEVARD**

1,039 Square Feet In-Line Space

Vanilla Shell

## **18166 PIONEER BOULEVARD**

1,311 Square Feet In-Line Space

Frontage on 183rd Street

## **18178-18182 PIONEER BOULEVARD**

2,353 Square Feet End-Cap Space

Turn-Key Bank (Former HSBC) with Frontage on Pioneer Boulevard



# 18148 PIONEER BOULEVARD

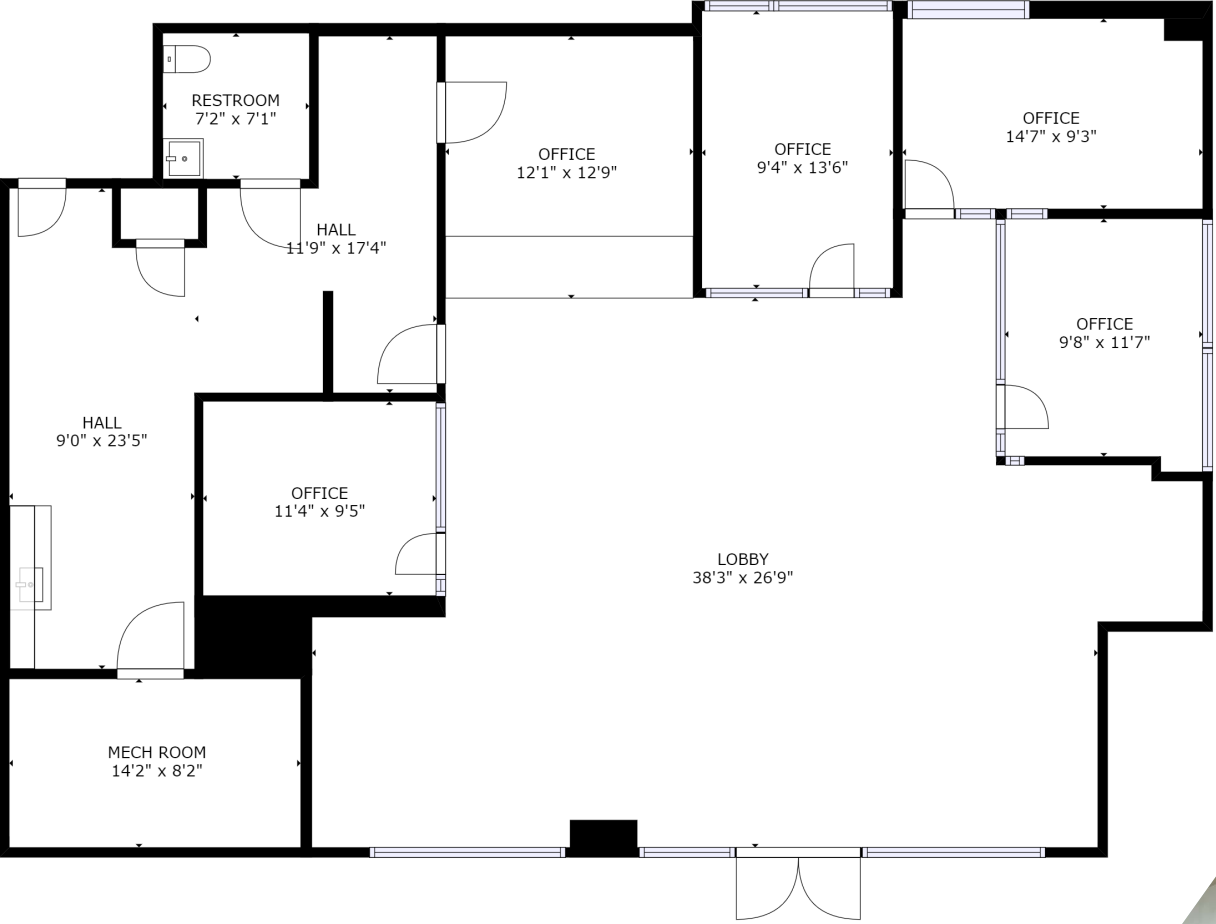


# 18166 PIONEER BOULEVARD





# 18178-18182 PIONEER BOULEVARD







Tyler Portman  
(562) 762-3152

[tyler@gmpropertiesinc.com](mailto:tyler@gmpropertiesinc.com)

Lic. 01919110

**GM Properties, Inc. | 13305 Penn Street, Suite 200, Whittier, CA 90602 | Corp. Lic. 01238514**