

COMMERCIAL LOT AVAILABLE

Owens Parkway ♦ Pelham, AL ♦ 35244 ♦ Shelby County



LOT SIZE: 1 +/- Acre ♦ PRICE: \$1,500 per month

Mark Dinan, MBA, CCIM

(o) 205-980-3434

(c) 205-243-3434

markdinan@bellsouth.net

MARK DINAN
Commercial & Investment Real Estate

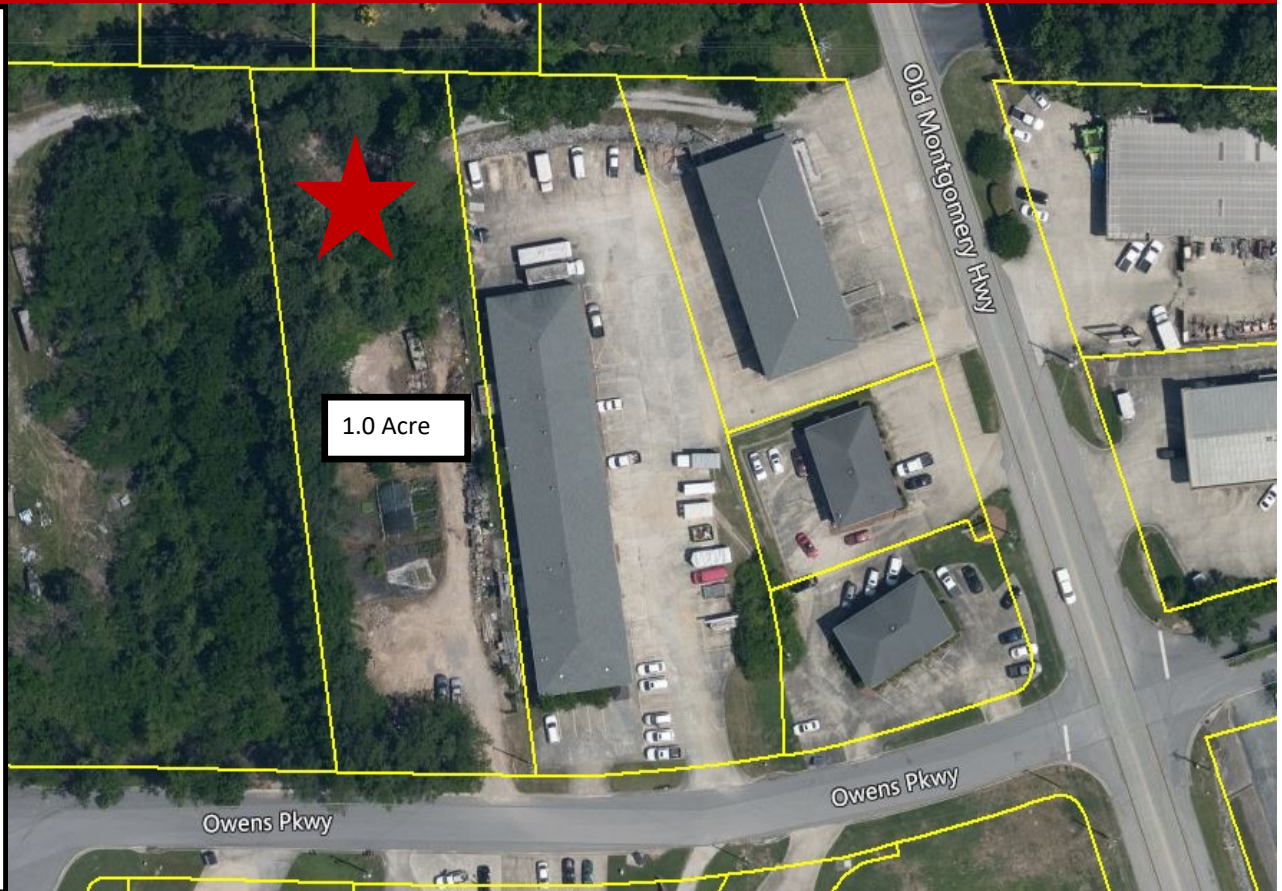


*All Information furnished regarding property sale, rental, or financing is from sources deemed reliable, but is not guaranteed.

LOCATION DETAILS

Owens Parkway ♦ Pelham, AL ♦ 35244 ♦ Shelby County

- ♦ Super Desirable Riverchase Area
- ♦ Level, graded, rectangle Lot.
- ♦ Secure. City of Pelham
- ♦ Measures 115' wide by 382' Deep
- ♦ Water Meter
- ♦ Sewer, Electric, Gas, Phone Available.
- ♦ Excellent Access
- ♦ Zoned M-1 Light Industrial District
- ♦ Super Convenient
- ♦ Outside Storage Allowed
- ♦ Ideal for Yard, Contractor, Parking, Storage, Landscaper, etc.



Mark Dinan, MBA, CCIM

(o) 205-980-3434

(c) 205-243-3434

markdinan@bellsouth.net

MARK DINAN
Commercial & Investment Real Estate



*All Information furnished regarding property sale, rental, or financing is from sources deemed reliable, but is not guaranteed.

LOT VIEW

Owens Parkway ♦ Pelham, AL ♦ 35244 ♦ Shelby County



Mark Dinan, MBA, CCIM

(c) 205-980-3434

(c) 205-243-3434

markdinan@bellsouth.net

MARK DINAN
Commercial & Investment Real Estate



*All Information furnished regarding property sale, rental, or financing is from sources deemed reliable, but is not guaranteed.

LOCATION MAP

Owens Parkway ♦ Pelham, AL ♦ 35244 ♦ Shelby County



Directions:

- ♦ Take I-65 to Exit 247. Go West on Valleydale Road. Go North onto CR 275 (Old Montgomery Highway). Turn left onto Owens Parkway. Lot is on the right .

Mark Dinan, MBA, CCIM

(c) 205-980-3434

(c) 205-243-3434

markdinan@bellsouth.net

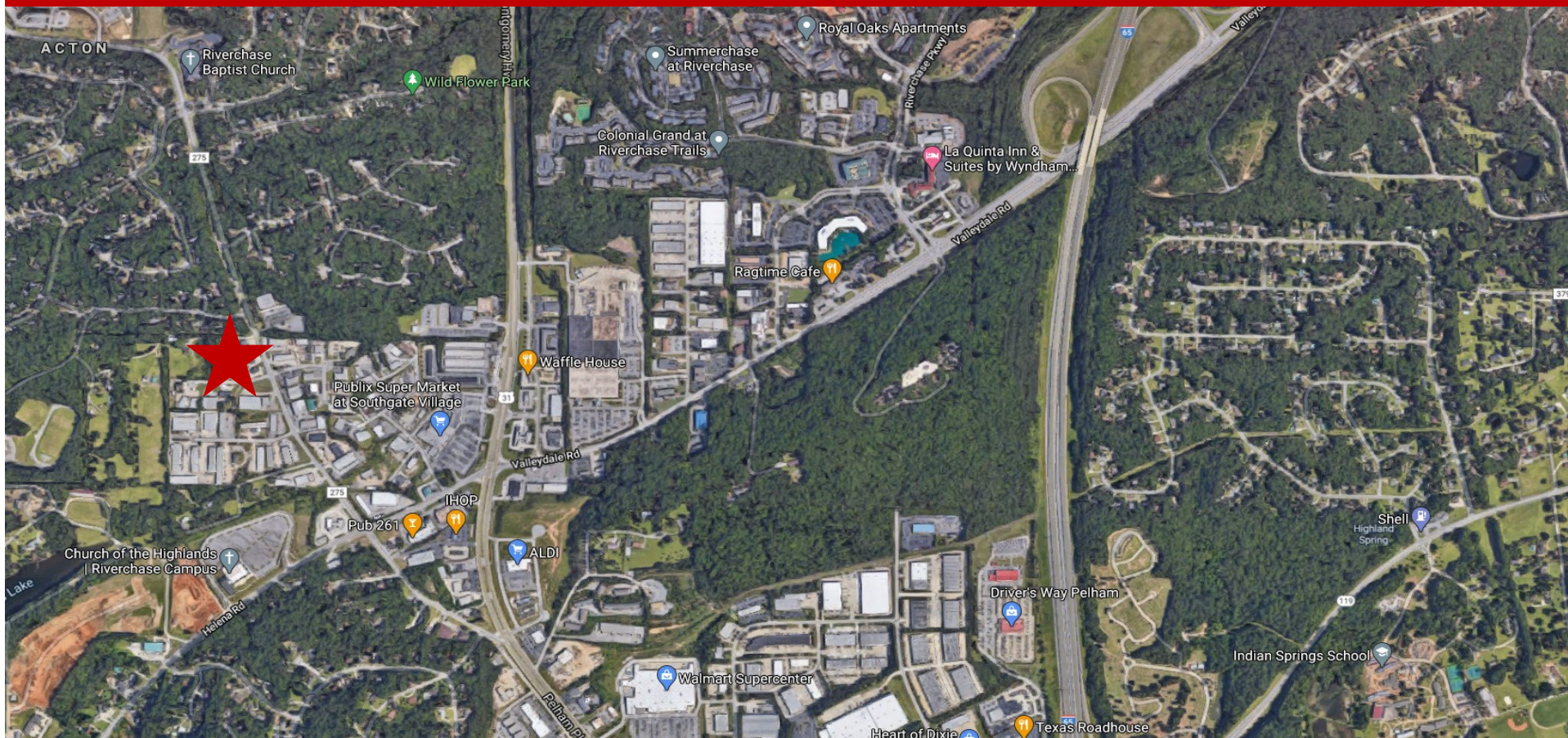
MARK DINAN
Commercial & Investment Real Estate



*All Information furnished regarding property sale, rental, or financing is from sources deemed reliable, but is not guaranteed.

AERIAL LOCATION MAP

Owens Parkway ◇ Pelham, AL ◇ 35244 ◇ Shelby County



Mark Dinan, MBA, CCIM

(c) 205-980-3434

(c) 205-243-3434

markdinan@bellsouth.net

MARK DINAN
Commercial & Investment Real Estate



*All Information furnished regarding property sale, rental, or financing is from sources deemed reliable, but is not guaranteed.

DEMOGRAPHICS

Owens Parkway ♦ Pelham, AL ♦ 35244 ♦ Shelby County

DEMOGRAPHIC SUMMARY

104 Owens Pkwy
Ring of 5 miles

KEY FACTS

103,547

Population



42,148

Households

39.4

Median Age

\$75,367

Median Disposable Income

EDUCATION

3.2%

No High School Diploma



13.9%

High School Graduate



24.1%

Some College/
Associate's Degree



58.8%

Bachelor's/Grad/
Prof Degree

INCOME



\$93,341

Median Household Income



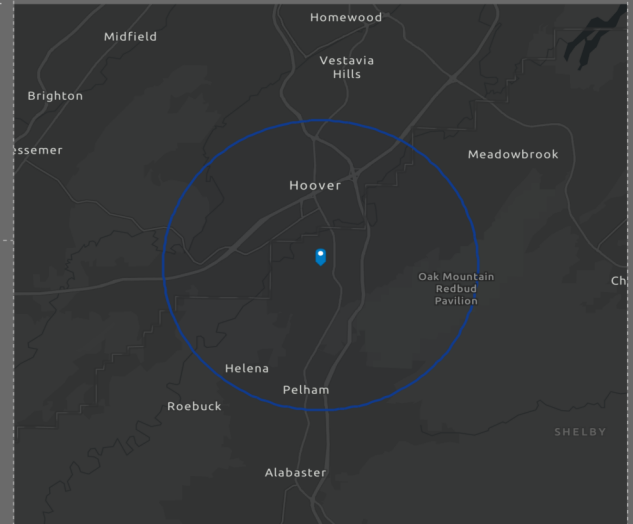
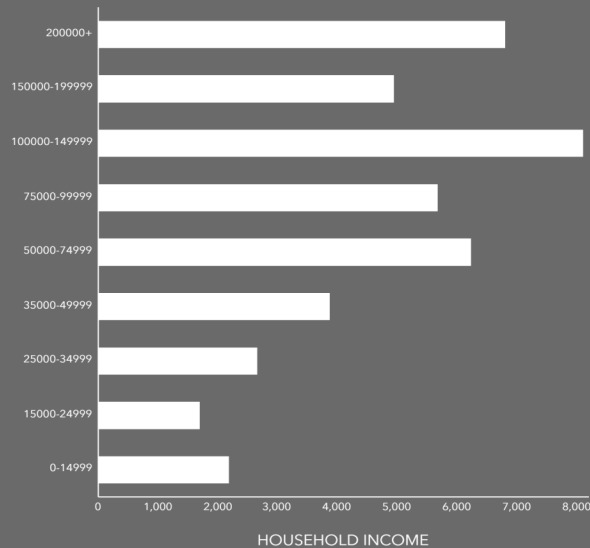
\$52,805

Per Capita Income



\$316,741

Median Net Worth



EMPLOYMENT



White Collar

76.5%



Blue Collar

13.3%



Services

11.7%

2.5%

Unemployment Rate

Mark Dinan, MBA, CCIM

(o) 205-980-3434

(c) 205-243-3434

markdinan@bellsouth.net

MARK DINAN
Commercial & Investment Real Estate



*All Information furnished regarding property sale, rental, or financing is from sources deemed reliable, but is not guaranteed.