

OFFICE SUITE OR
SINGLE OFFICES
FOR LEASE

The Metropolitan

320 First Street N. #704, Jacksonville Beach, FL 32250



- **Unit 704: +/-1,343 SF**
- **Lease Rate: \$42/SF Modified Gross (Plus Electric & Janitorial)**
- **Individual Offices available for lease**
 - *See floor plan for individual office rates (Wi-Fi included)**
- Floor plan includes a private entrance with 4 offices, conference room, reception, break area, and a workstation - perfect for a small business
- Located on the Northside of the building with ocean views
- Class A, mixed-use building, constructed in 2006
- On-site security, common area restrooms, dual elevators and garbage chute
- On site parking garage and city parking is available just to the north of the building
- The site is just ½ block south of the Jacksonville Beach Pier and one block West of the Atlantic Ocean. Surrounded by various restaurants, shops and hotels in the heart of Jacksonville Beach Town Center.



STRATEGIC SITES
Clifford Commercial

JC Clifford
jcc@strategicsites.com

For Additional
Information Contact:

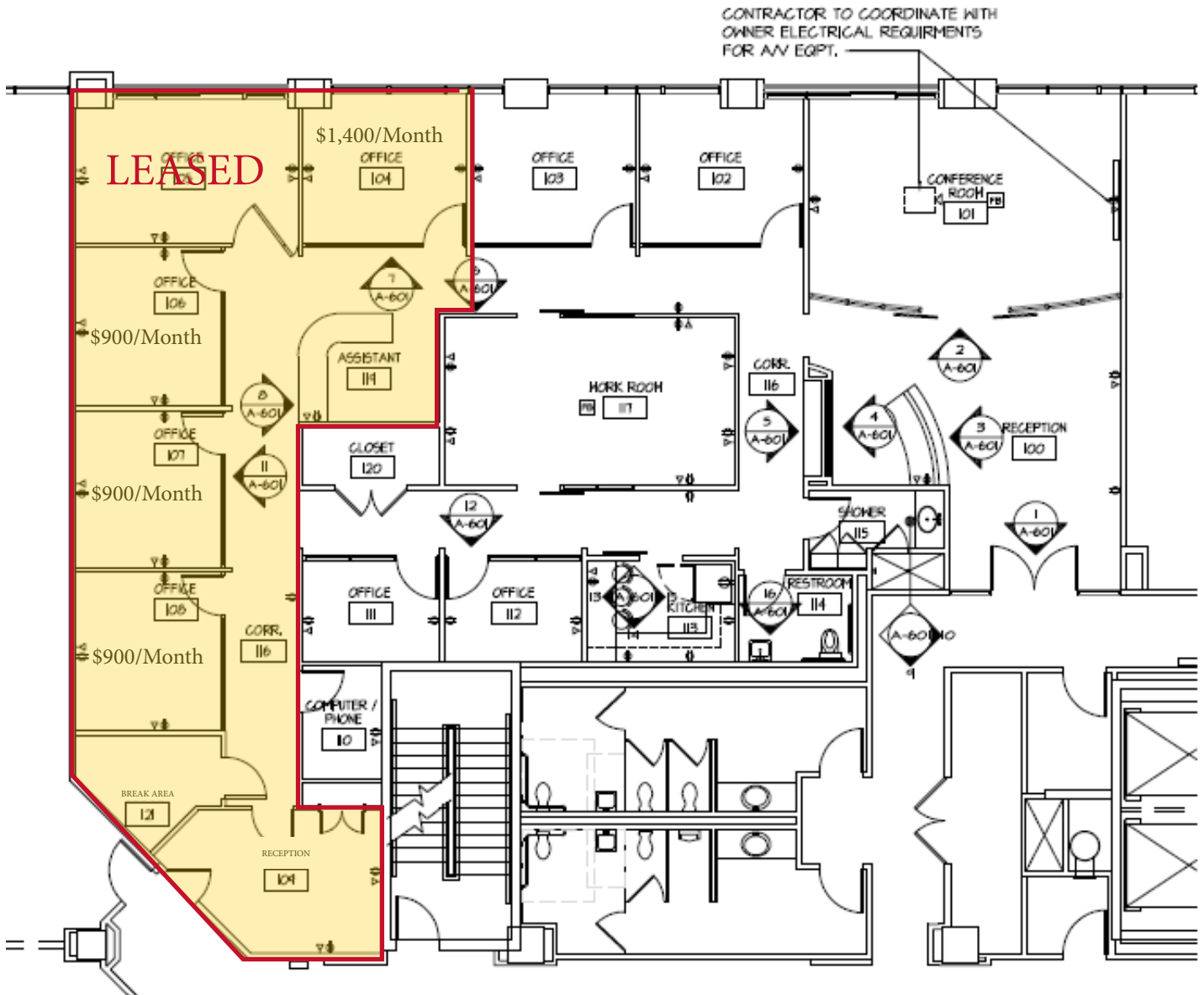
OR
Kate Clifford
kate@strategicsites.com

422 Jacksonville Drive, Jacksonville Beach, FL ~ 904-242-2828 ~ www.strategicsites.com

Client First through Service, Knowledge and Integrity

Notice of Disclaimer: Details contained herein are believed to be correct: the information is subject to errors, omissions, price changes, or withdrawal without notice

Floor Plan +/- 1,343 SF



1 FLOOR PLAN
1/8"=1'-0"